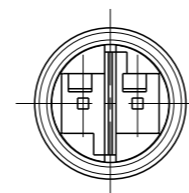


REVISIONS

P	LTR	DESCRIPTION	DATE	DWN	APVD
H		ECR-16-003641	11MAY2016	RS	JL
J		ECR-16-017348	24FEB2017	RK	JL
M		REVISED PER ECO-17-008502	17JUL2017	SK	JL
M1		PN -3 RELEASED FOR PRODUCTION	07NOV2018	MZ	MZ

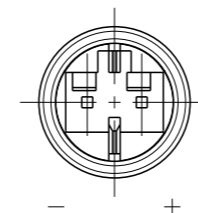
HIGH-VOLTAGE

Keying HV-1



LOW-VOLTAGE

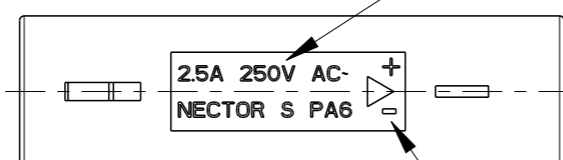
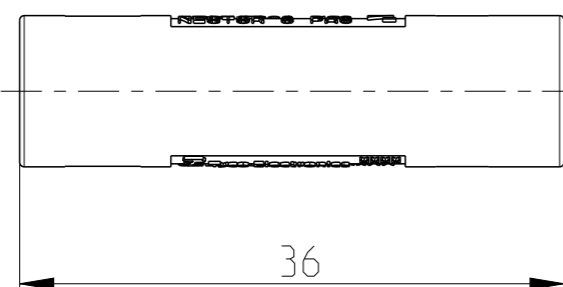
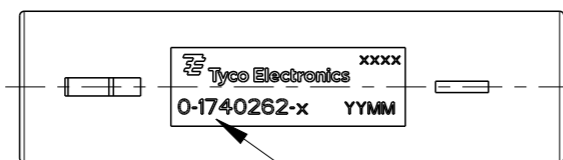
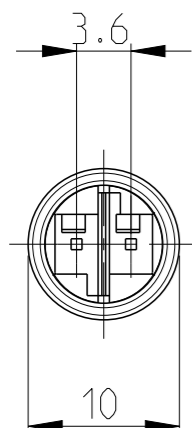
Keying LV-2



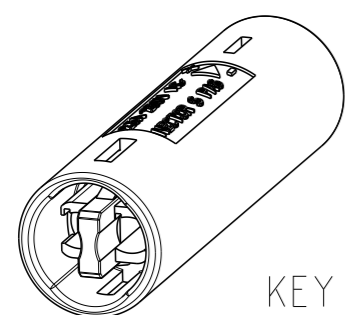
Notes:

1. cavities designed for MQS Pin contact PN 1740335-x
2. Counterpart is Plug PN 1740259-x and corresponding products of the NECTOR S family

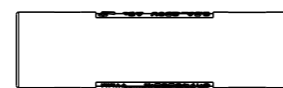
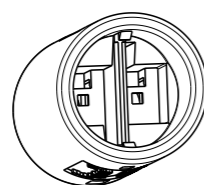
- △3 Polarity marking +/- only for DC version (Keying LV-2)
- △4 PN specific marking
- △5 OBSOLETED



LV-2	LOW-VOLTAGE 125VAC/VDC	7A/125VAC/VDC	BLACK	0-1740451-3
LV-2	LOW-VOLTAGE 125VAC/VDC	7A/125VAC/VDC	YELLOW	0-1740451-2
LV-1	LOW-VOLTAGE 125VAC/VDC	7A/125VAC/VDC	LIGHT GREY	0-1740451-1
HV-3	HIGH-VOLTAGE 125V AC	6A/125V AC~	BLUE	0-1740262-6
HV-1	HIGH-VOLTAGE 250V AC	2.5A/250V AC~	BLACK (ANTHRACITE)	0-1740262-2
HV-1	HIGH-VOLTAGE 250V AC	2.5A/250V AC~	NATURAL (WHITE)	0-1740262-1
Keying	REMARKS	Marking	COLOR	PN



KEYING HV-1 AS SHOWN



1:1

THIS DRAWING IS A CONTROLLED DOCUMENT.

DWN H.ATZMANN 07FEB2005

CHK M.OFENLOCH 07FEB2005

APVD T.GERLACH 07FEB2005

PRODUCT SPEC

108-94018

APPLICATION SPEC

114-18751

WEIGHT 2.2 g

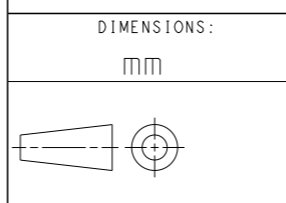
CUSTOMER DRAWING



NAME NECTOR S Connector System Outlet

SIZE A3 CAGE CODE 00779 DRAWING NO C=1740262 RESTRICTED TO

SCALE 2:1 SHEET 1 OF 1 REV M1



MATERIAL PA 6

DIMENSIONS:		TOLERANCES UNLESS OTHERWISE SPECIFIED:	
mm			
0 PLC	±0.2		
1 PLC	±0.2		
2 PLC	±0.2		
3 PLC	±		
4 PLC	±		
ANGLES	±1°		
FINISH	-		