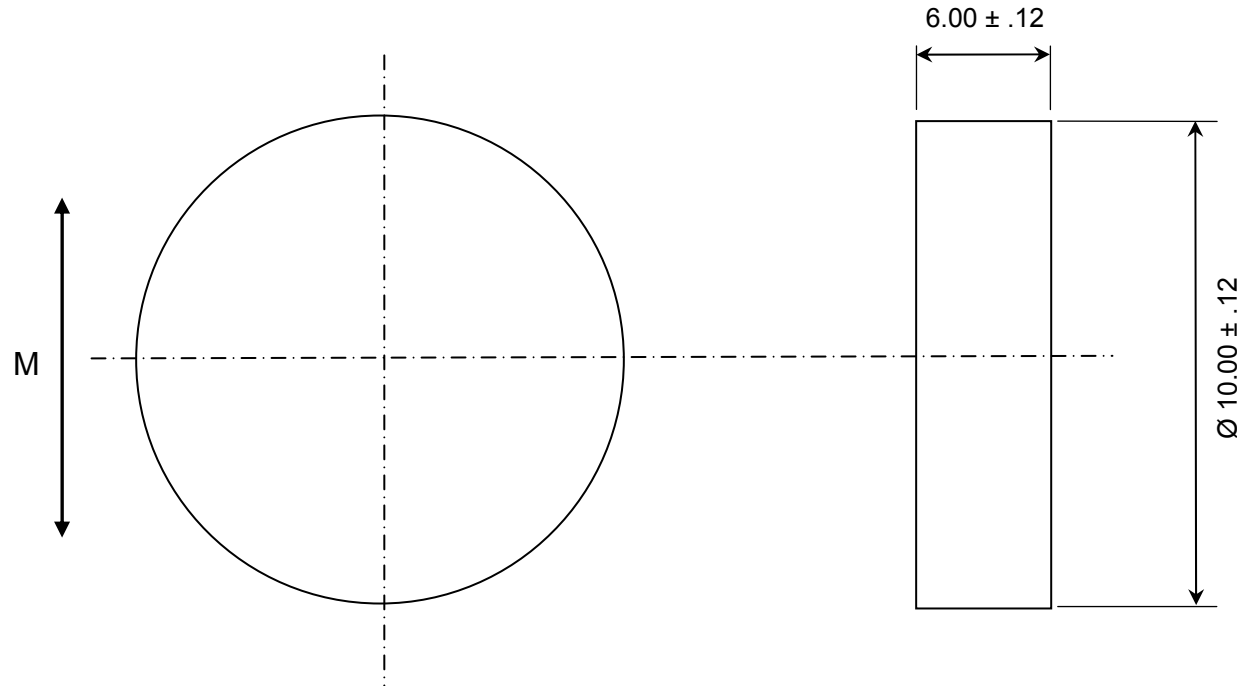
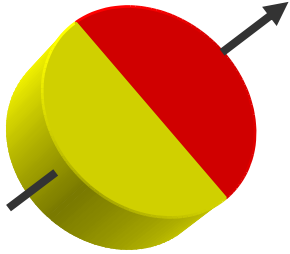


CONFIDENTIAL & PROPRIETARY INFORMATION

This document contains Confidential and Proprietary Information of Alliance LLC, and all design, manufacturing, reproduction, use, and sale rights of such information are expressly reserved

ALL DIMENSIONS ARE IN MM



NOTES:

1. MAGNET PROPERTIES PER S22:

- Br: 9,500-10,000 G
- Hc: 9,000-9,500 Oe
- Hci: ≥15,000 Oe
- T max: 250 C

2. SUPPLIED MAGNETIZED ACROSS THE DIAMETER



REV	DESCRIPTION	DATE	BY
B	Changed CAD, incl cert, 3D	2/11/20	BT

TOLERANCES (UNLESS OTHERWISE NOTED)	
DECIMAL	METRIC
X.XX = ± .01	X.X = ± .25
X.XXX = ± .005	X.XX = ± .13
ANGLES ± .5°	
DO NOT SCALE DRAWING	

Alliance LLC 1450 CLARK DRIVE, VALPARAISO, INDIANA 46385		
DESCRIPTION: 10.0 mm x 6.0 mm DISC MAGNET		
Samarium Cobalt Magnet		P/N: ALC10060
GRADE: S22	Drwg by: BT	REV LEVEL: B
COATING: None	Appr by: DV	Appr. Dated: 08-18-2019