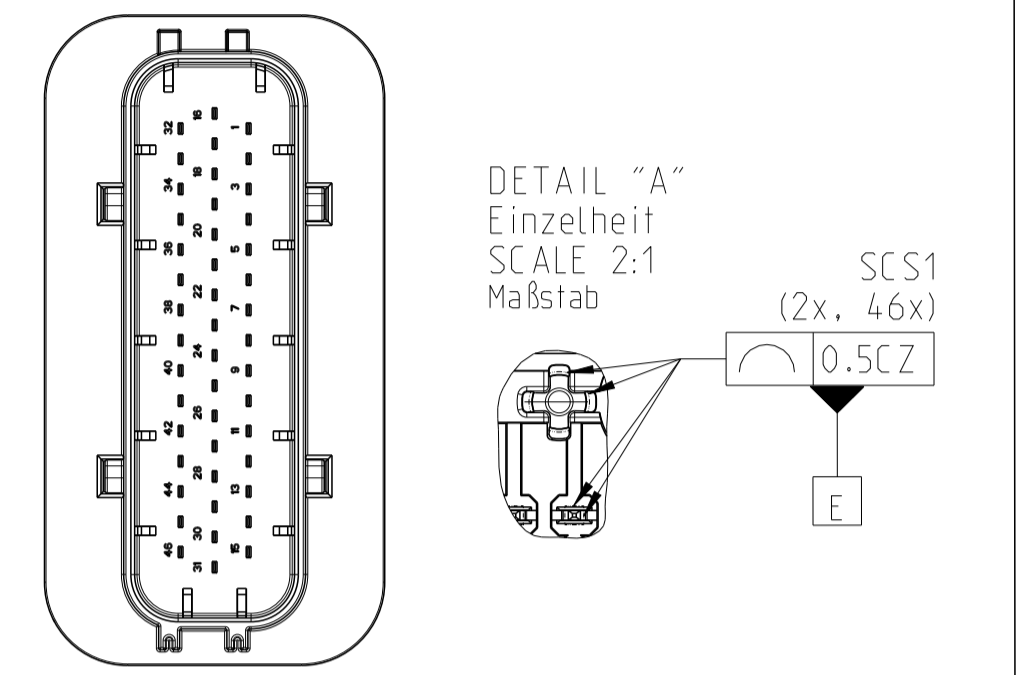
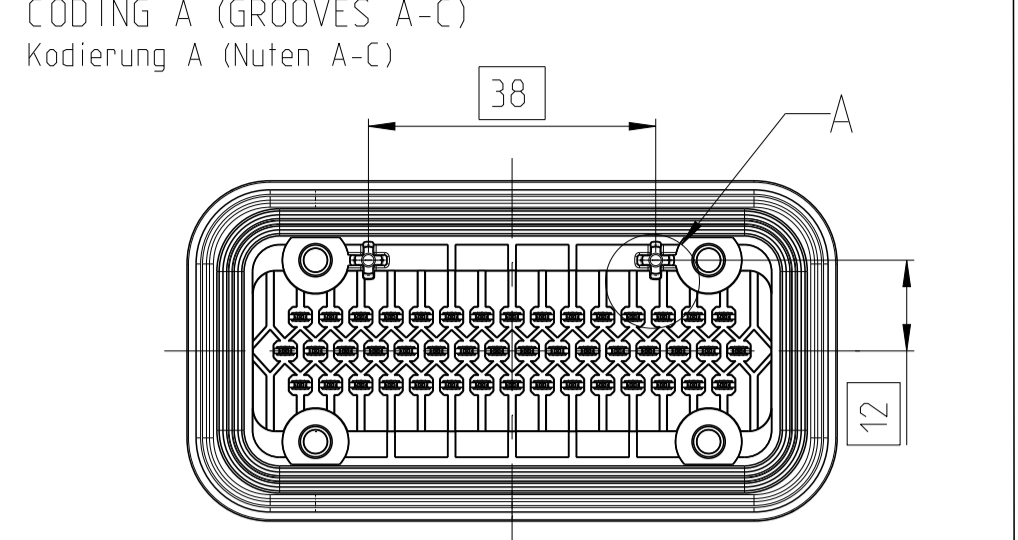
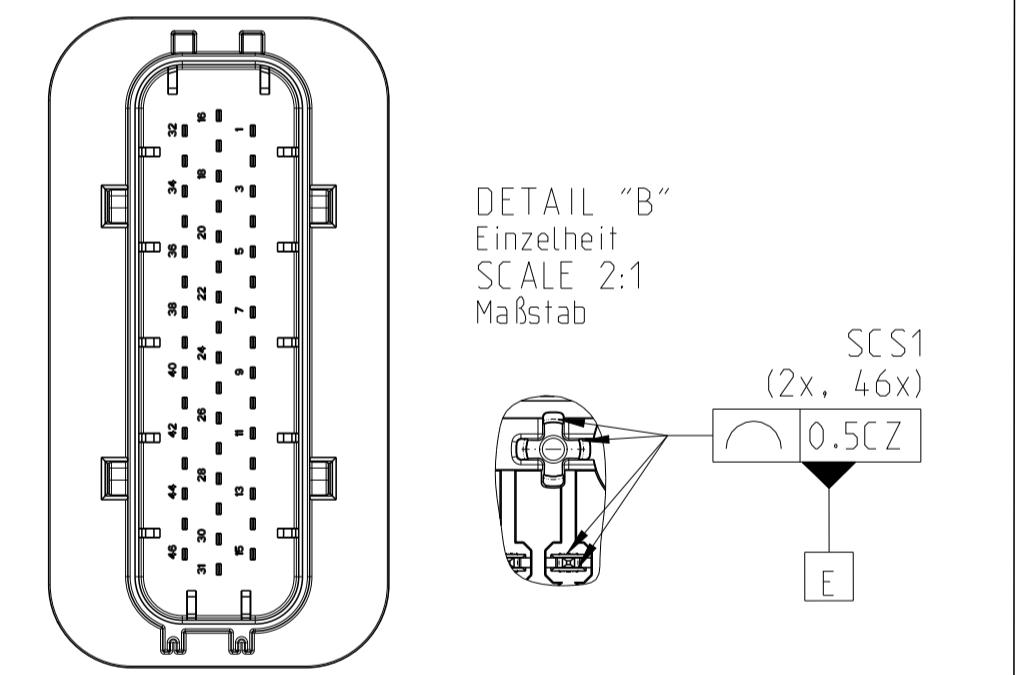
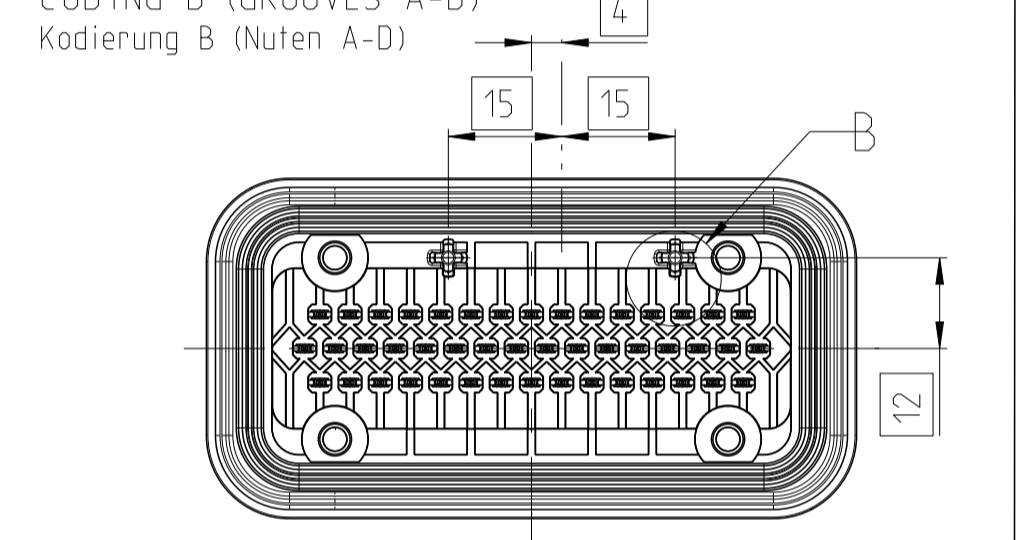


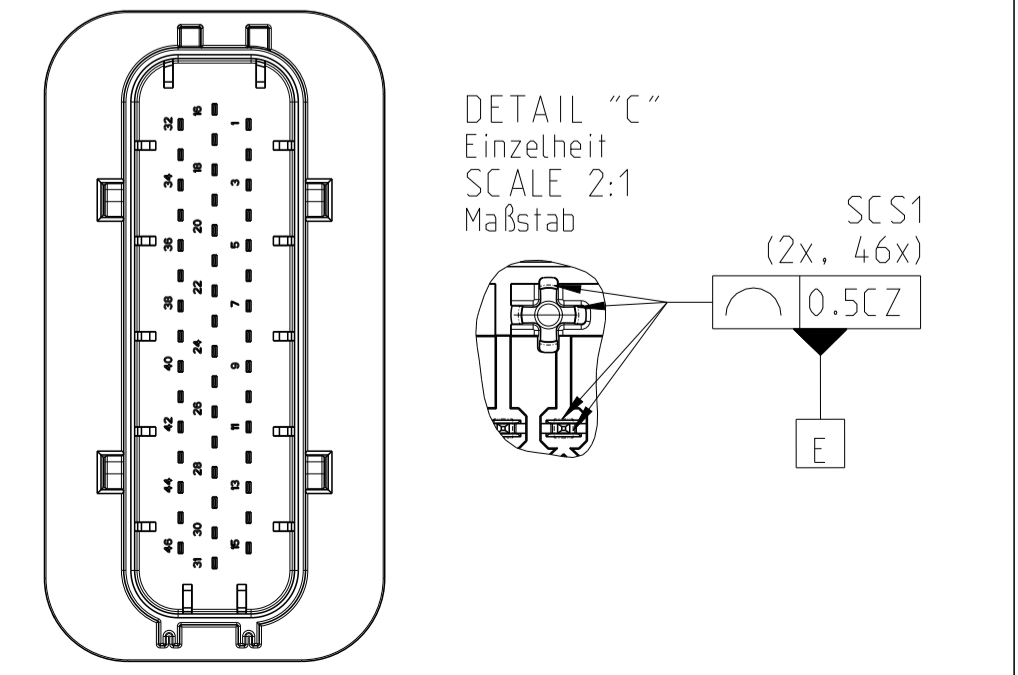
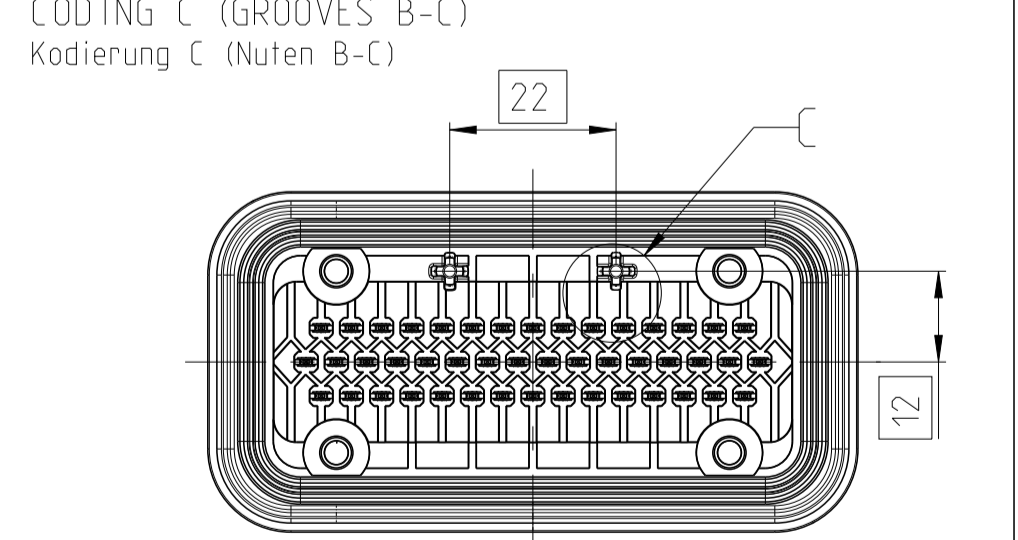
1-2331102-1  
CODING A (GROOVES A-C)  
Kodierung A (Nuten A-C)



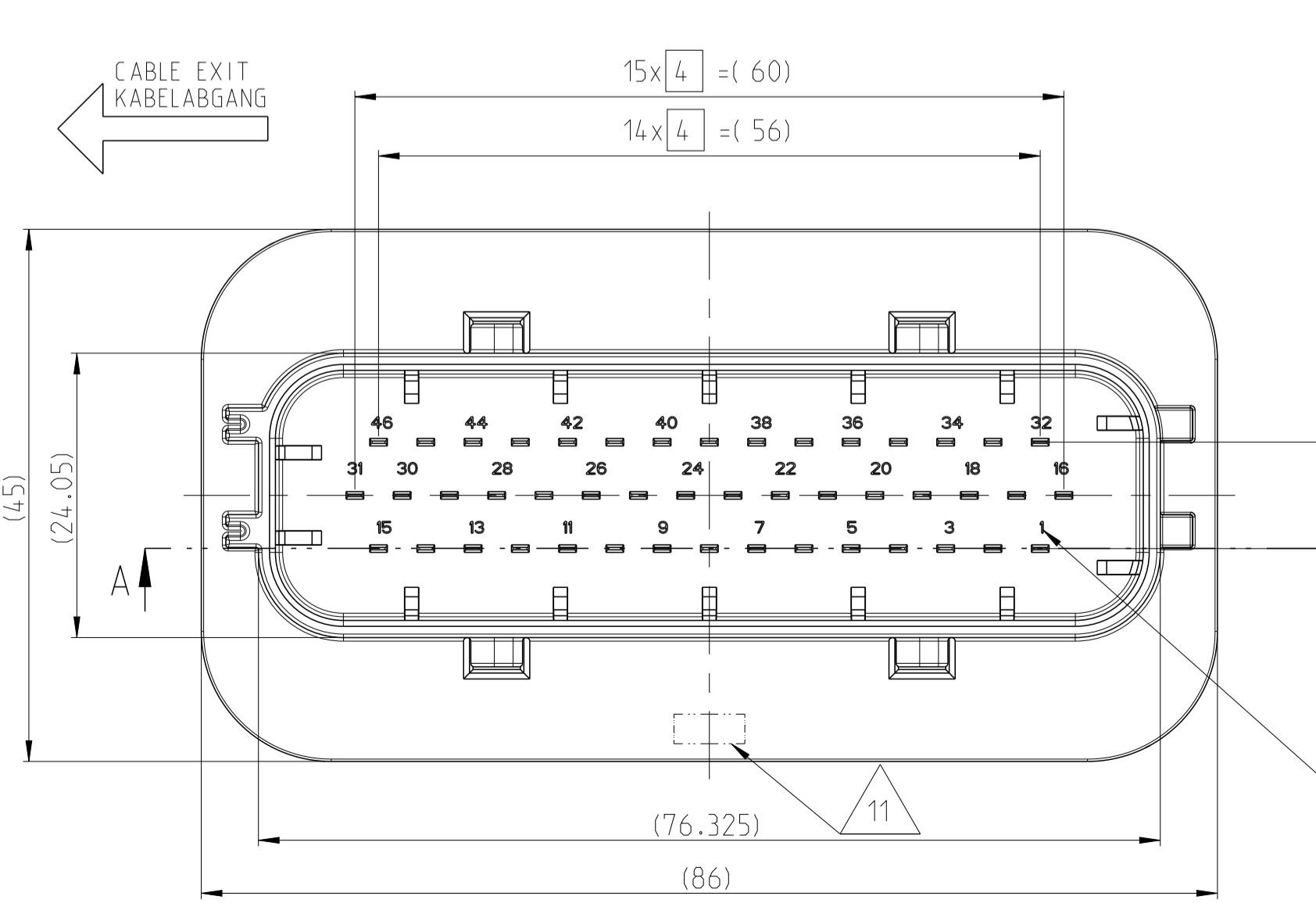
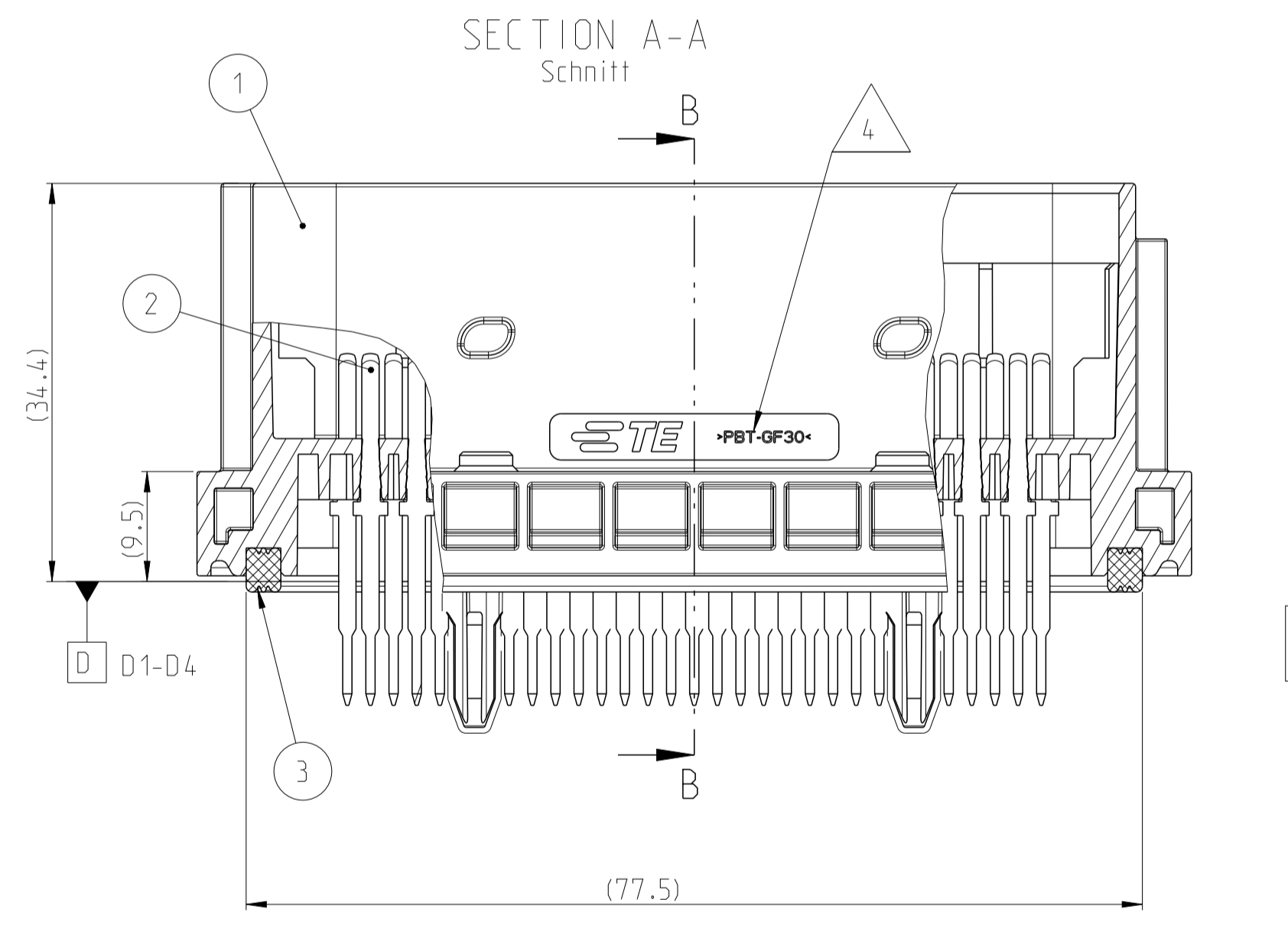
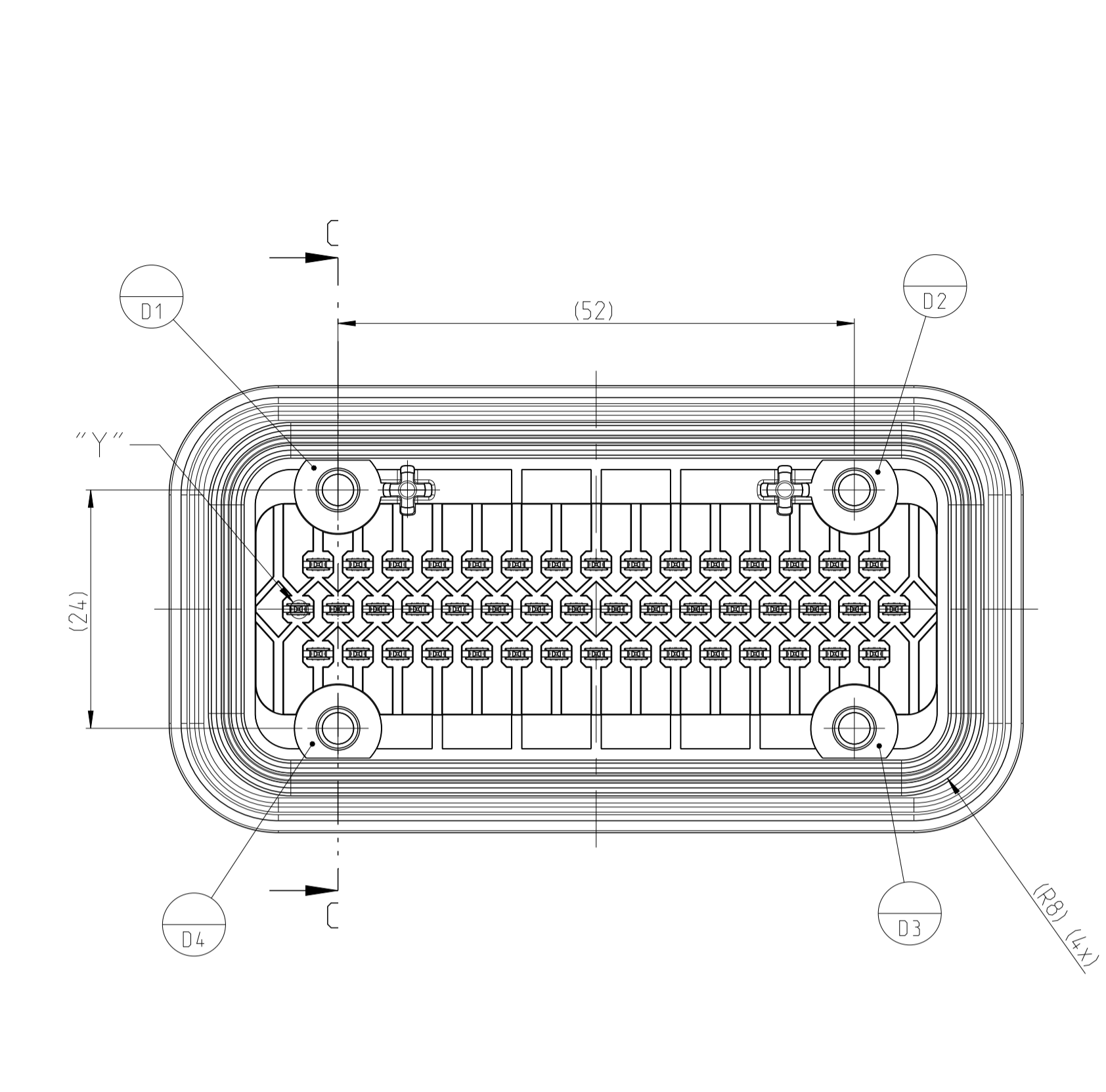
2-2331102-1  
CODING B (GROOVES A-D)  
Kodierung B (Nuten A-D)



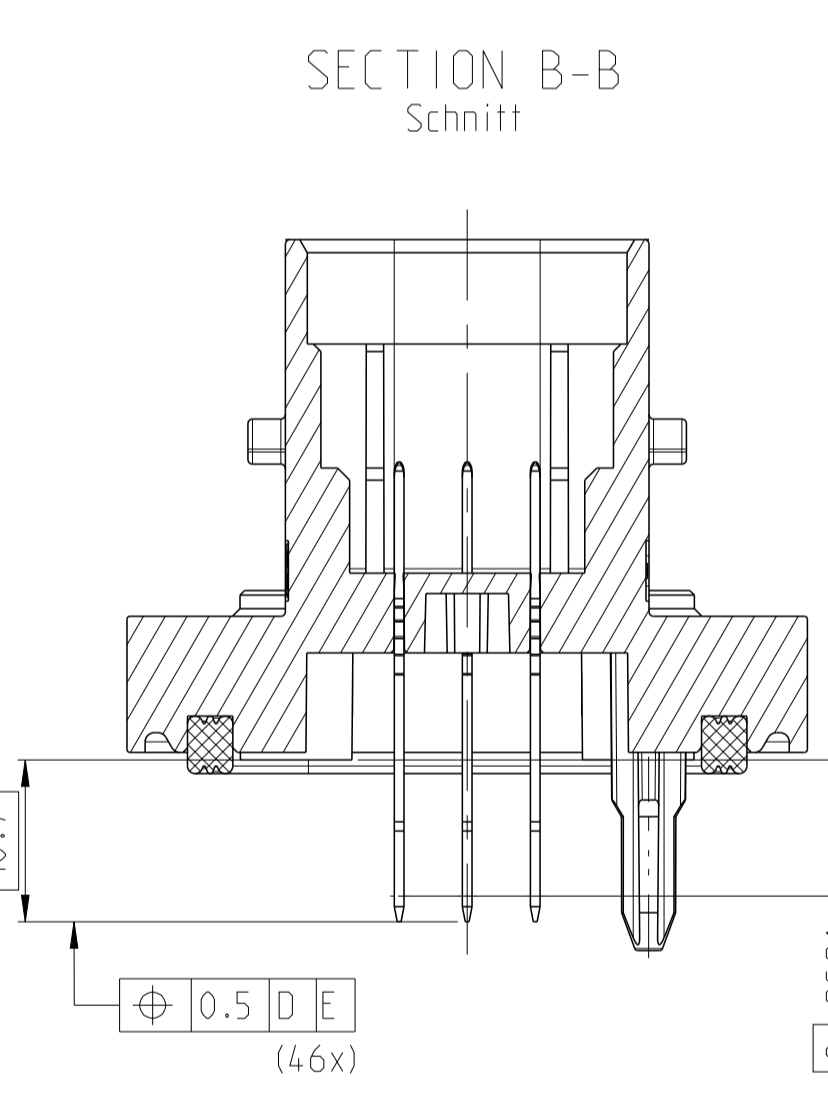
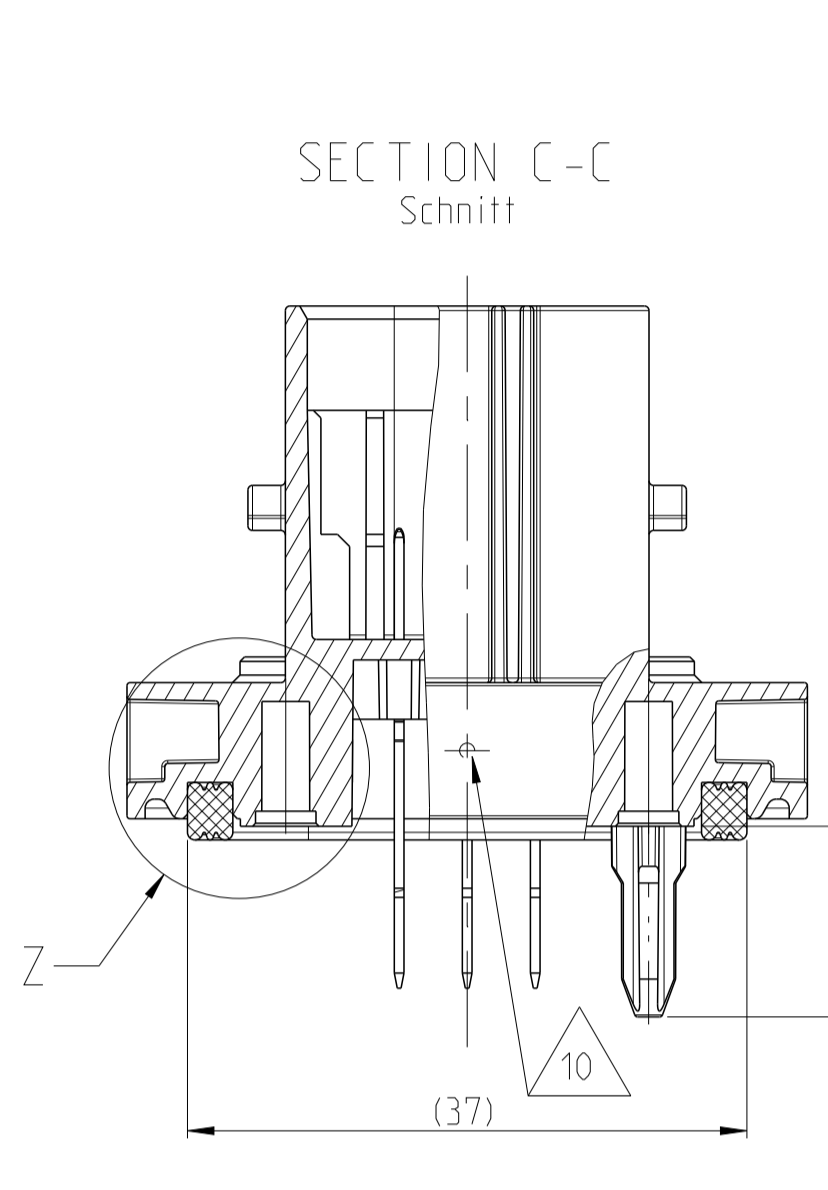
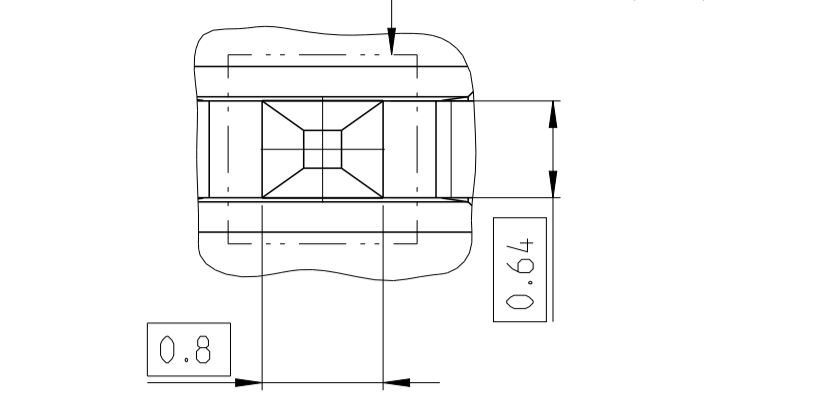
3-2331102-1  
CODING C (GROOVES B-C)  
Kodierung C (Nuten B-C)



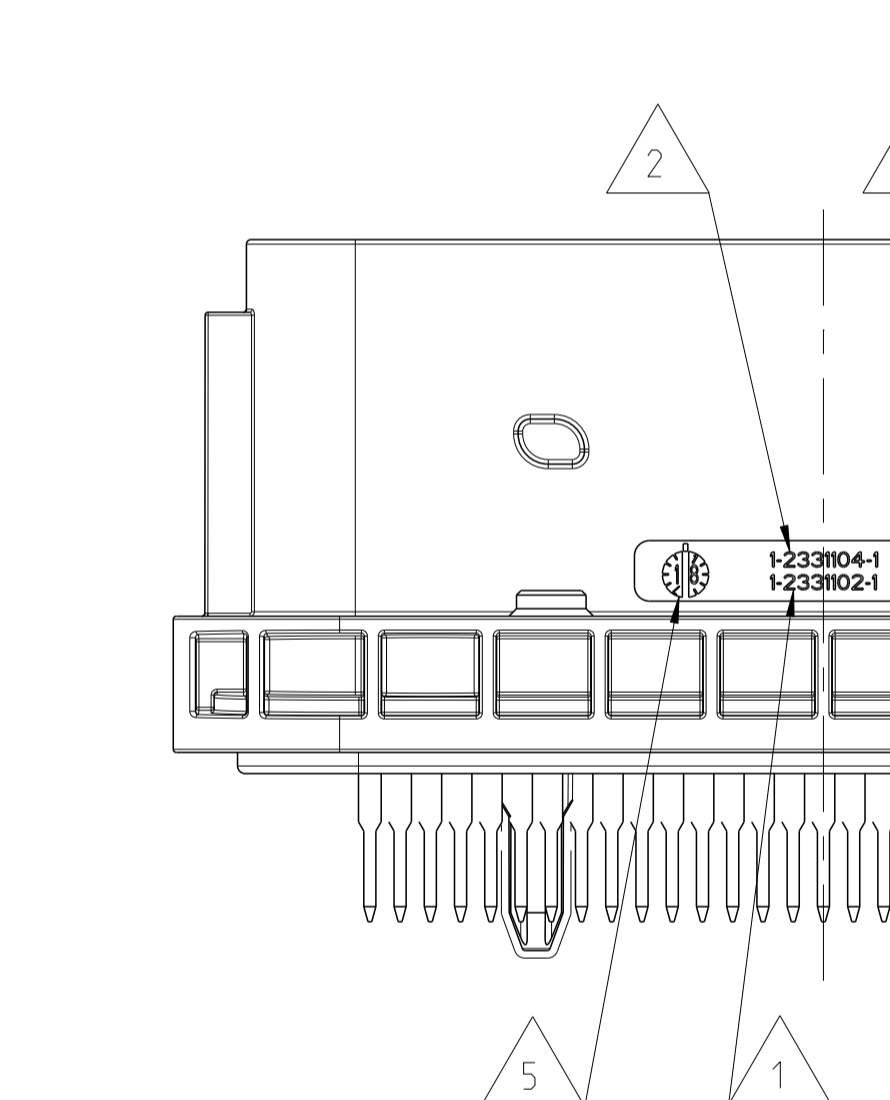
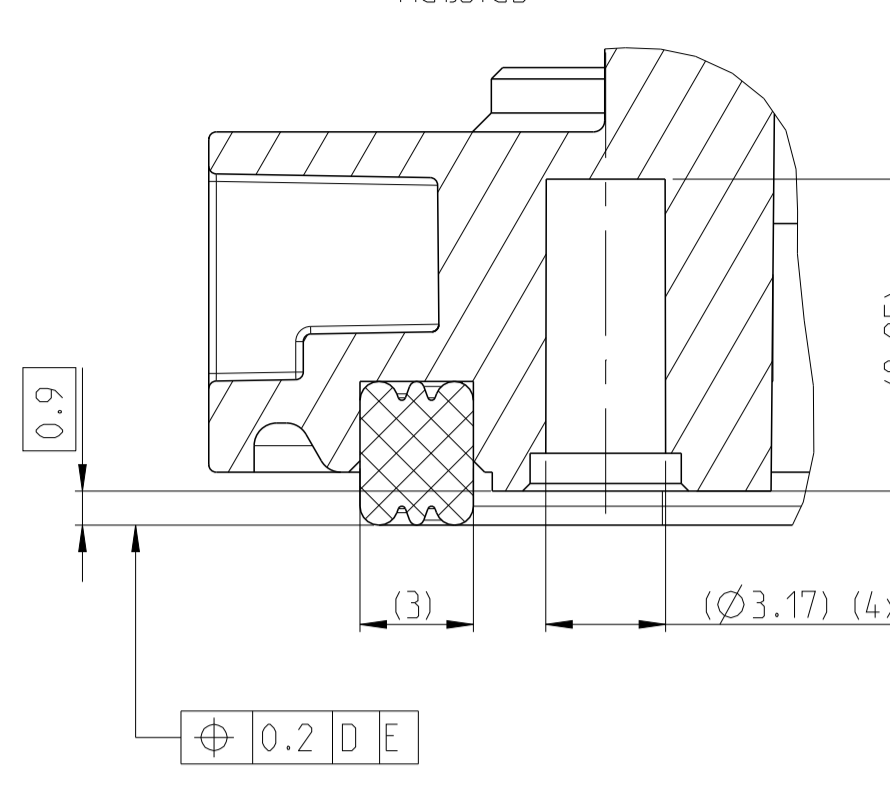
1-...-1 AS SHOWN  
Wie gezeichnet



DETAIL "Y"  
Einzelheit  
SCALE 20:1  
Maßstab



DETAIL "Z"  
Einzelheit  
SCALE 5:1  
Maßstab



USED WITH / PASSEND ZU		REVISIONS / ANÄNDERUNGEN		DATE	DWN	APVD
P	LTN	DESCRIPTION / BESCHREIBUNG				
B		NEW DRAWING		07SEP2019	MK	FE
B1		SEE PCN-21-100433		02FEB2021	MK	JH

- NOTES / Bemerkungen
- TE CONNECTIVITY (TE) ORDER-NUMBER. / TE Connectivity (TE) Bestellnummer
  - TE SINGLE PART NUMBER / TE Einzelteilnummer
  - REVISION OF THE MOLD / Werkzeugänderungsindex
  - MATERIAL MARKING ACCORDING TO VDA 260 / Materialkennzeichnung nach VDA 260
  - PRODUCTION DATE / Produktionsdatum
  - MOLD CAVITY MARKING / Nestmarkierung
  - CONTACT CAVITY NUMBERING / Kammernummerierung
  - DIFFERENT CODINGS / Unterschiedliche Kodierungen
  - INTERFACE ACCORDING TO TE-SPECIFICATION 114-18455-1, REV.: B / Schnittstelle gemäß TE-Spezifikation 114-18455-1, Rev.: B
  - GATE MARK / Anspritzpunkt
  - AREA FOR CHECKED PART MARKING AFTER SUCCESSFUL EOL (END OF LINE) TEST / Bereich für Gutteilmarkierung nach erfolgreichem EOL (End of Line) Test
  - EXTRACTION FORCE OF STITCHING CONTACTS MIN. 40N. / Auszugskraft der Steckkontakte min. 50N. / Testgeschwindigkeit: 25 mm / min.
  - PACKED IN TRAY OR SPECIAL FORM ACCORDING TO TE PACKAGING SPECIFICATION V2331102 / Verpackt im Tray oder Spezialform nach TE Verpackungsspezifikation V2331102
  - REQUIREMENT FOR SEALING ON CUSTOMER HOUSING:  $Rz \leq 6.3 \mu m$  / Anforderungen für Dichtungsbereich am Kundengehäuse

REV	LTN	DESCRIPTION	QTY	MATERIAL	COLOUR	ITEM NO
C	3-2331102-1	SEALING / Dichtung	1	SILICON SHORE A / Silikon-Kautschuk	ORANGE / orange	3
		Tab / Flachstecker	46	Cu Zn 30	Ag / Sn	2
		HOUSING / Gehäuse	1	PBT-GF30	LIGHT BLUE / hellblau	1
B	2-2331102-1	SEALING / Dichtung	1	SILICON SHORE A / Silikon-Kautschuk	ORANGE / orange	3
		Tab / Flachstecker	46	Cu Zn 30	DUSTY GREY / grau	2
		HOUSING / Gehäuse	1	PBT-GF30	ORANGE / orange	1
A	1-2331102-1	SEALING / Dichtung	1	SILICON SHORE A / Silikon-Kautschuk	ORANGE / orange	3
		Tab / Flachstecker	46	Cu Zn 30	Ag / Sn	2
		HOUSING / Gehäuse	1	PBT-GF30	ORANGE / orange	1

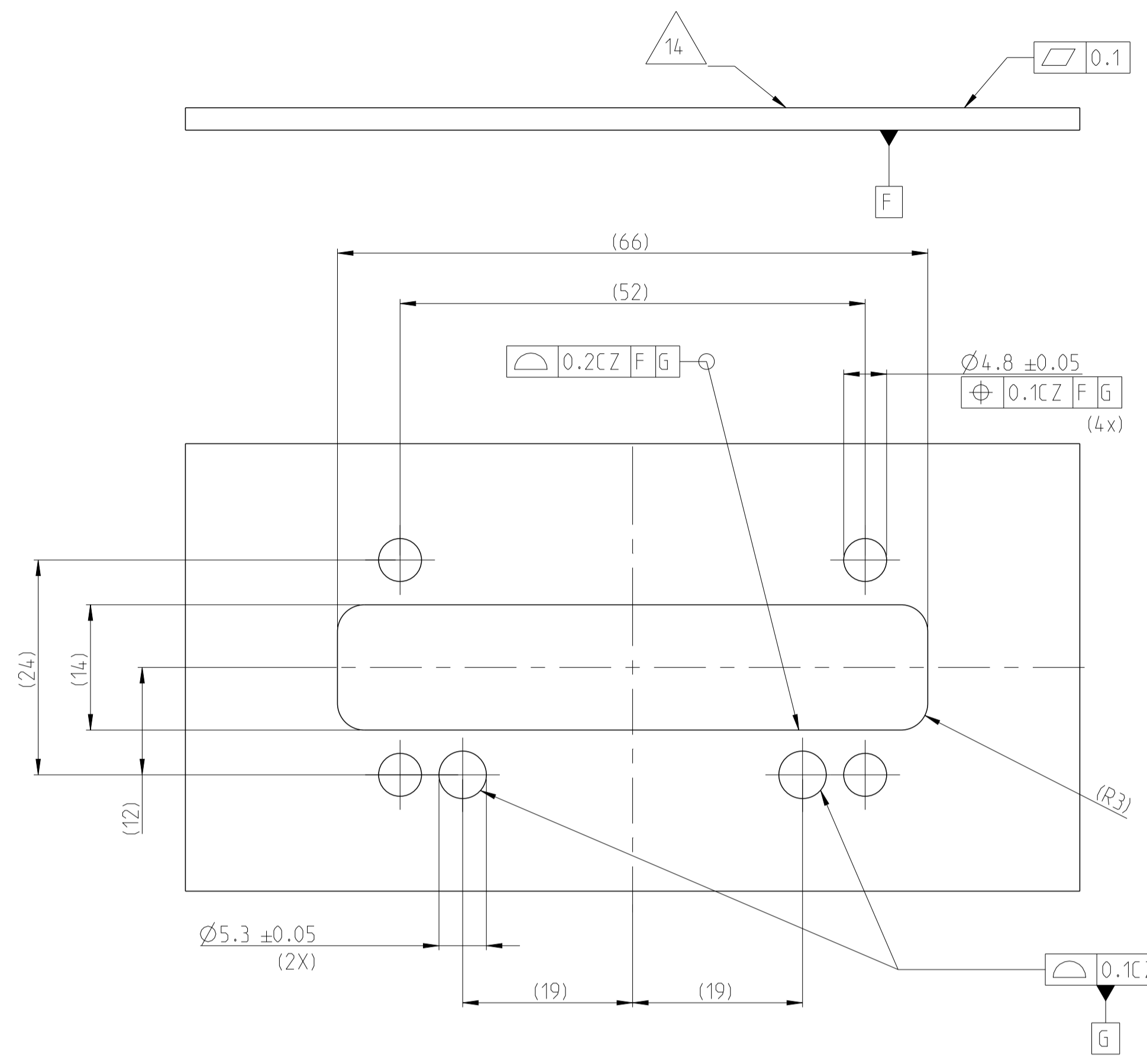
THIS DRAWING IS A CONTROLLED DOCUMENT.		DWN	DATE	TE CONNECTIVITY	
DIMENSIONS: / MASSENHEITEN: mm		M. Kilian	07SEP2019	TE Connectivity	
TOLERANCE: GROUP T05		J. Hoffmann	14SEP2019	NAME: TAB HEADER 46 POS. ASSY	
TOLERANCE GROUP: T05		E. Ellrop	15SEP2019	NAME: Messerleiste 46 polig Assy	
DIN EN ISO 8015 (2013) - DIN EN ISO 291				SIZE: A	
DIN EN ISO 14005				CAGE CODE: 00779	
				DRAWING NO: 2331102	
				SCALE: MASSSTAB 2:1	
				SHEET: 1 OF 2	
				REV: B1	

B1

CODING A:

CUT OFF WITH POLARISATION  
Befestigungsausschnitt mit Polarisation

1-2331102-1

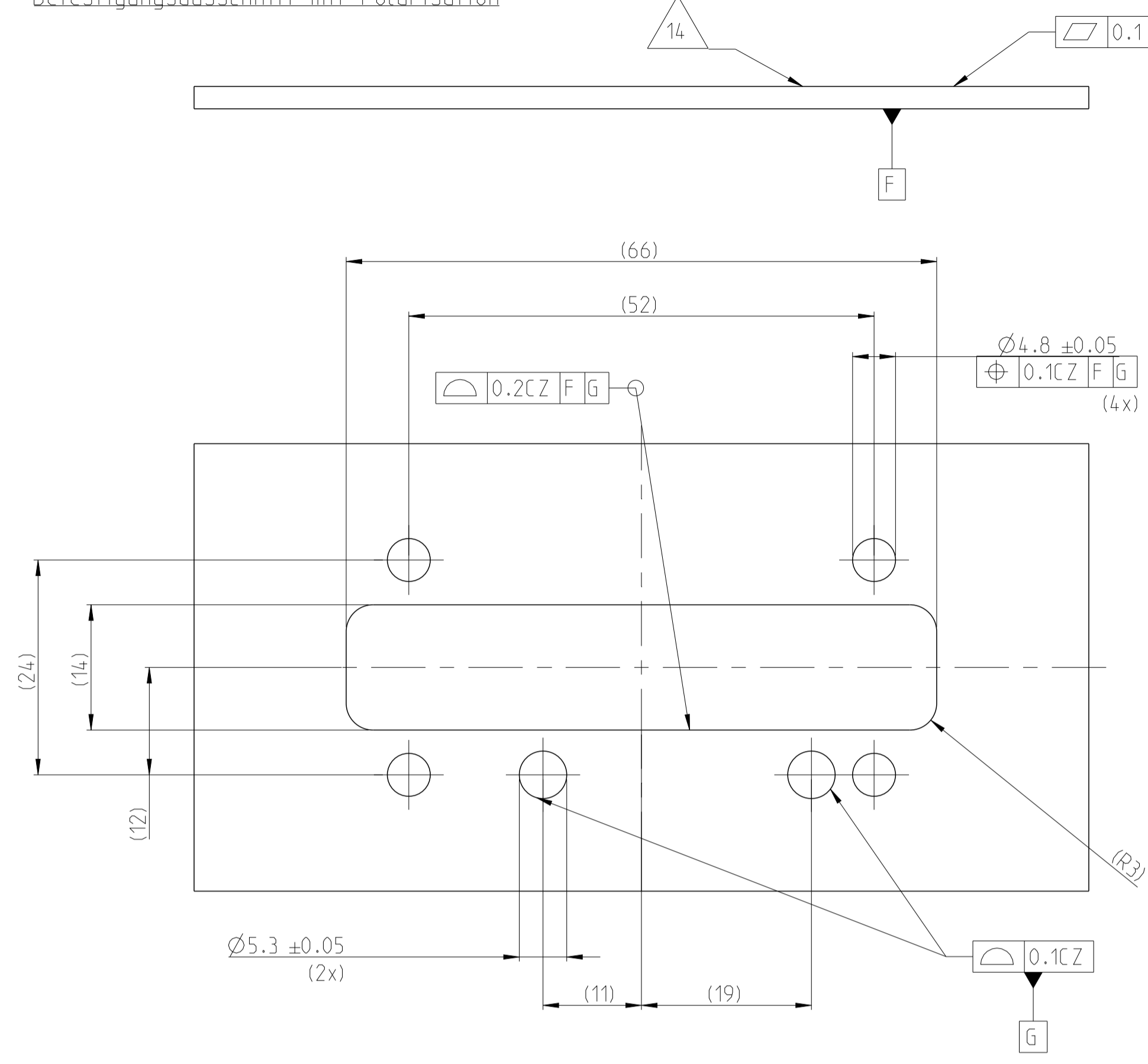


B1

CODING B:

CUT OFF WITH POLARISATION  
Befestigungsausschnitt mit Polarisation

2-2331102-1

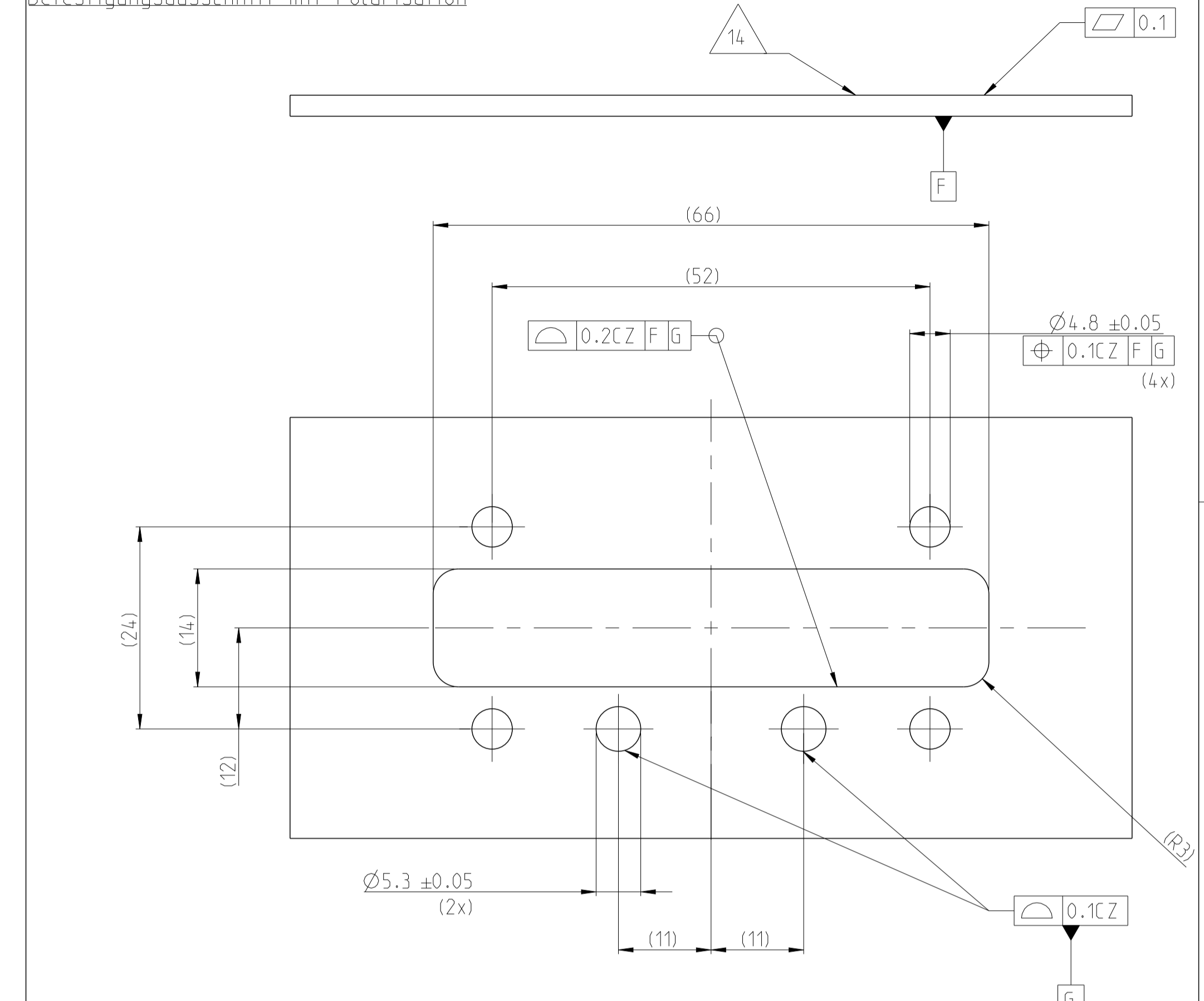


B1

CODING C:

CUT OFF WITH POLARISATION  
Befestigungsausschnitt mit Polarisation

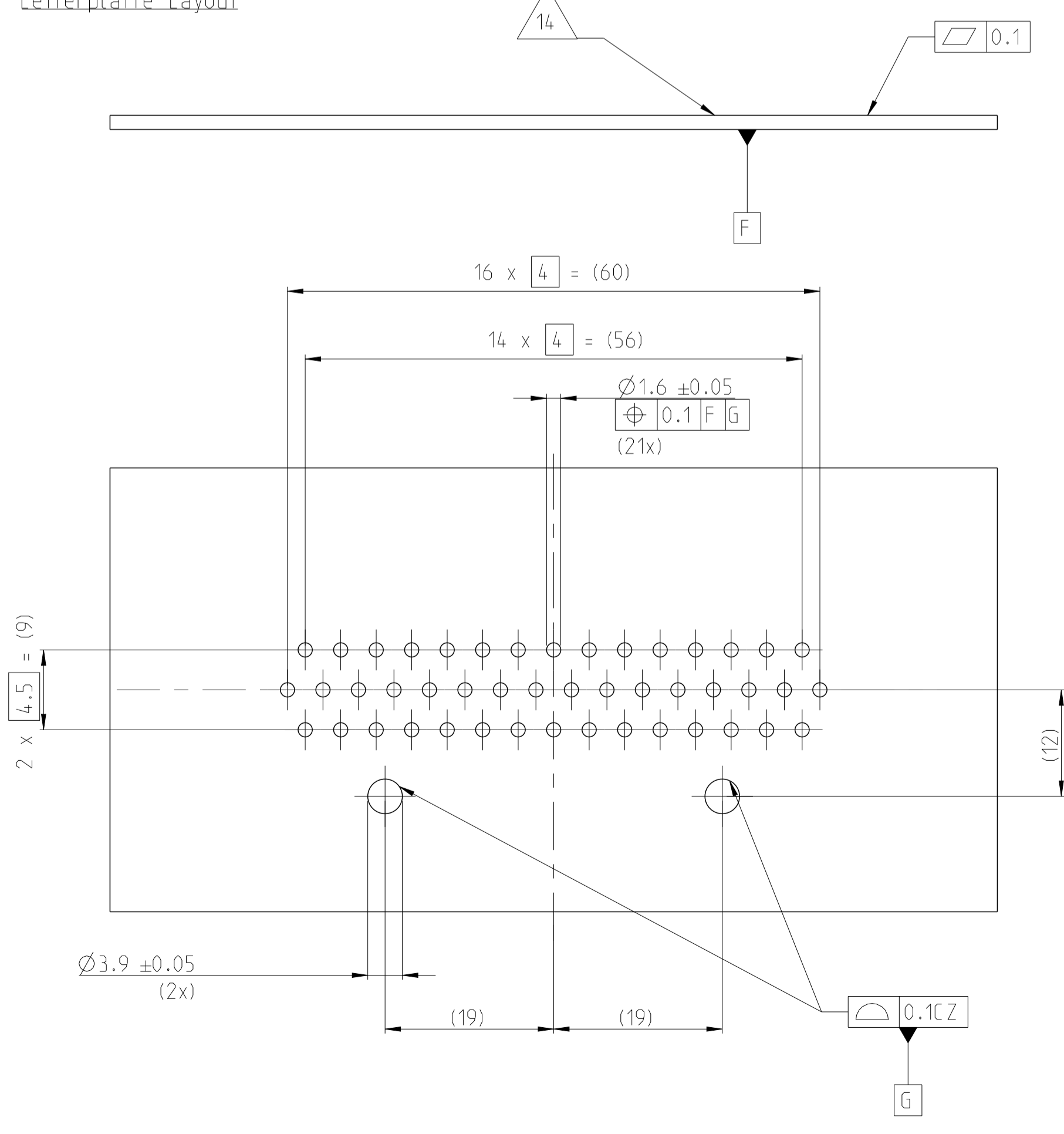
3-2331102-1



REVISIONS				
P.	LTN.	DESCRIPTION	DATE	APPV.
-	-	SEE SHEET 1	-	-

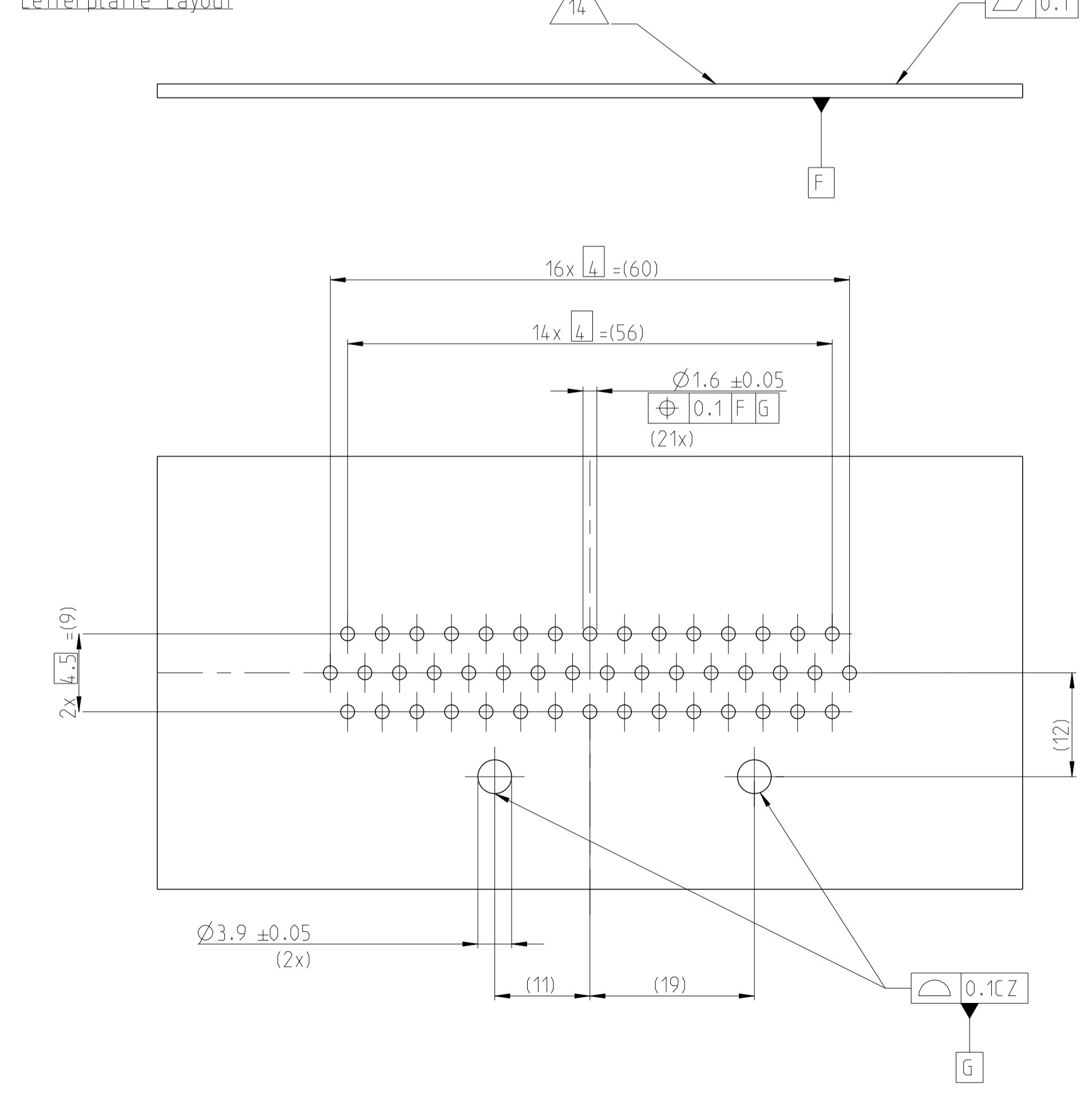
PCB LAYOUT  
Leiterplatte Layout

1-2331102-1



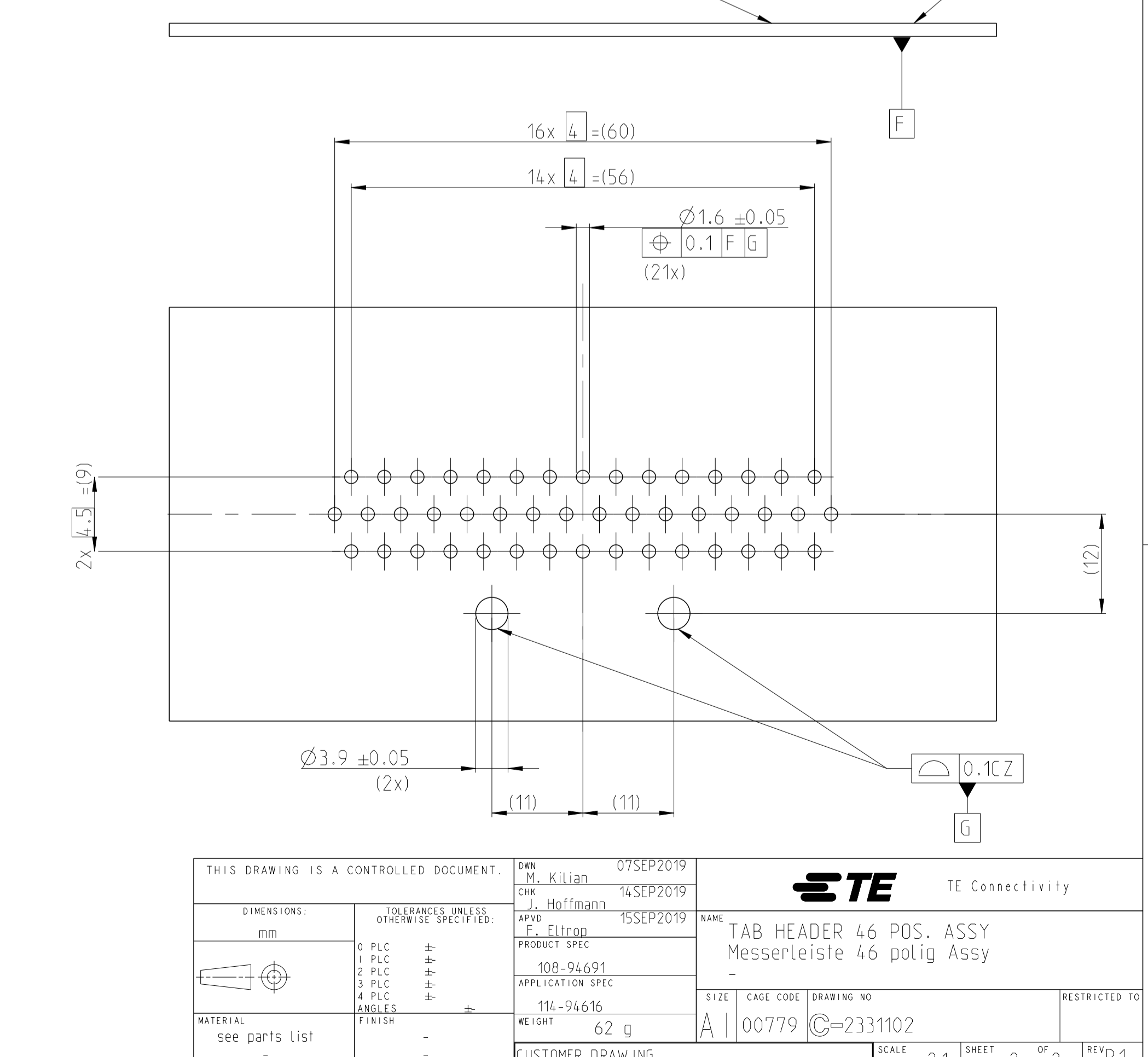
PCB LAYOUT  
Leiterplatte Layout

2-2331102-1



PCB LAYOUT  
Leiterplatte Layout

3-2331102-1



THIS DRAWING IS A CONTROLLED DOCUMENT.		OWN: M. Kilian 07SEP2019	 TE Connectivity
DIMENSIONS: mm		CHK: J. Hoffmann 14SEP2019	
TOLERANCES UNLESS OTHERWISE SPECIFIED:		APPV: F. Ellrop 15SEP2019	NAME: TAB HEADER 46 POS. ASSY
0 PLC # # # #		PRODUCT SPEC	Messenleiste 46 polig Assy
1 PLC # # # #		APPLICATION SPEC	SIZE: CAGE CODE: DRAWING NO:
2 PLC # # # #		114-94616	RESTRICTED TO:
3 PLC # # # #		WEIGHT: 62 g	A   00779   C=2331102
4 PLC # # # #		CUSTOMER DRAWING	SCALE: 2:1 SHEET 2 OF 2 REV: B1
MATERIAL: see parts list			
FINISH: -			