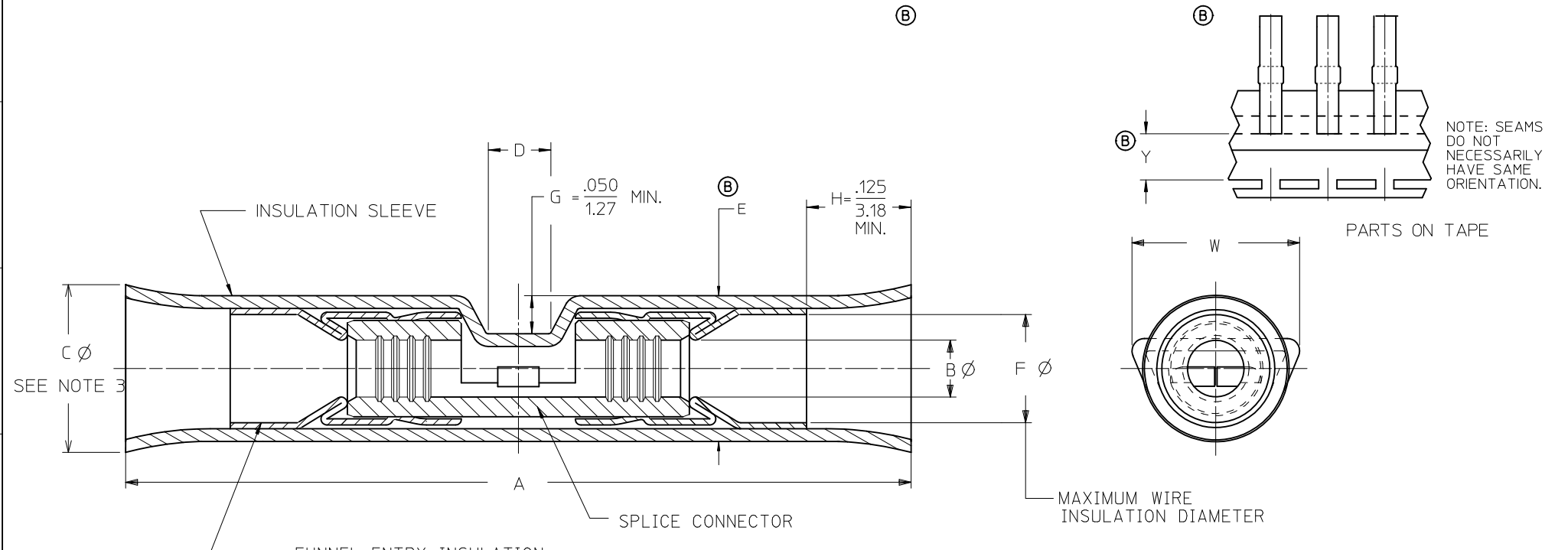


| LOOSE PIECE | | TAPE MOUNTED | | WIRE AWG | INSUL COLOR | DIMENSIONS | | | | | | | | |
|--------------|-----------------|-----------------------|--------------|----------|-------------|-----------------|---------------|--------------------------------|--------------------------------|-----------|--------------------------------|-----------|-------------|------------|
| MATERIAL NO. | ENGINEERING P/N | MIL-T-7928/5 PART NO. | MATERIAL NO. | | | ENGINEERING P/N | A MAX. | B | ⓐ C | D MIN. | E | F MIN. | W MAX. | Y NOMINAL |
| 191990007 | WA-840 | M7928/5-3 | 191990008 | WA-840T | 22-18 | RED | 1.300/(33.02) | .052 TO .073 (1.32 TO 1.85) | .160 TO .220 (4.06 TO 5.59) | .08/(2.0) | .160 TO .210 (4.06 TO 5.33) | .11/(2.8) | .250/(6.35) | .48/(12.1) |
| 191990009 | WB-841 | M7928/5-4 | 191990010 | WB-841T | 16-14 | BLUE | 1.300/(33.02) | .081 TO .095 (2.06 TO 2.41) | .180 TO .260 (4.57 TO 6.60) | .08/(2.0) | .180 TO .250 (4.57 TO 6.35) | .14/(3.6) | .290/(7.37) | .49/(12.4) |
| 191990011 | WC-842 | M7928/5-5 | - | - | 12-10 | YELLOW | 1.700/(43.18) | .129 TO .139 (3.28 TO 3.53) | .250 TO .320 (6.35 TO 8.13) | .11/(2.8) | .250 TO .310 (6.35 TO 7.87) | .20/(5.1) | .340/(8.64) | - |



- NOTES:
- MATERIAL
INSULATION: TRANSPARENT NYLON
FERRULE: TIN PLATED COPPER ALLOY
CONNECTOR: TIN PLATED COPPER
 - PARTS ARE ROHS COMPLIANT.
 - ⓐ FLARE PERMISSIBLE, NOT REQUIRED.

| | | | | | | |
|---|----------------------------------|---|------------------------------|--------------------------|----------------------|------------------------|
| ALLOW FLARE MATCH MIL EC NO: WNA2011-0273 DRW: WETHRODAHL 2010/11/18 CHKD: JMACNEIL 2010/11/19 APPR: JMACNEIL 2010/12/02 | QUALITY SYMBOLS ▽=0 ▽7=0 | GENERAL TOLERANCES (UNLESS SPECIFIED) mm INCH 4 PLACES ± --- ± --- 3 PLACES ± --- ± --- 2 PLACES ± --- ± --- 1 PLACE ± --- ± --- ANGULAR ± ---° | DIMENSION STYLE IN/MM | SCALE --- | DESIGN UNITS INCH | THIRD ANGLE PROJECTION |
| | DRAWN BY DATE RCM 1993/03/04 | TITLE AVIKRIMP WINDOW BUTT SPLICE | | | | |
| | CHECKED BY DATE JM 1993/03/04 | APPROVED BY DATE JMACNEIL 2010/12/02 | | | | |
| | MATERIAL NO. B | SEE CHART | DOCUMENT NO. SD-19199-003 | Molex MOLEX INCORPORATED | | |

DRAFT WHERE APPLICABLE MUST REMAIN WITHIN DIMENSIONS

THIS DRAWING CONTAINS INFORMATION THAT IS PROPRIETARY TO MOLEX INCORPORATED AND SHOULD NOT BE USED WITHOUT WRITTEN PERMISSION

SHEET NO. 1 OF 1