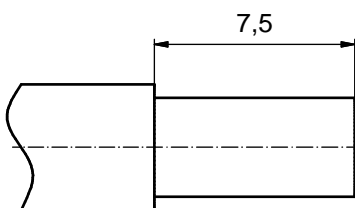


**NOTES:**

CRIMPING:  
 USE CRIMP TOOL: 360X10409X  
 WITH TOOL INSERT: 360X20029X  
 SELECTOR SETTINGS: 7 FOR AWG 10  
 6 FOR AWG 12

plating	part no.
GOLD FLASH over NICKEL	<b>131A11039X</b>
30µin HARD GOLD over min. 50µin NICKEL	<b>131C11039X</b>
50µin HARD GOLD over min. 50µin NICKEL	<b>131J11039X</b>

**STRIPPING DIMENSIONS**



Directive 2002/95/EC RoHS compliant

pos	qty	description	material	plating
3	1	RETAINING RING	COPPER ALLOY	NICKEL PLATED
2	1	REAR SIDE	COPPER ALLOY	GOLD FLASH over NICKEL
1	1	MATING SIDE	COPPER ALLOY	see table

partlist					tolerance	dim. in mm	scale:		
							8:1		
							material: see partlist		
					date	name	title:		
					drawn	12.07.12	Schmidt	<b>HIGH POWER CONTACT MALE</b> CRIMP VERSION 30A FOR AWG 10-12 D-SUB COMBINATION	
					appd.	12.07.12	Koch		
					norm				
					d-old	13K11D3A / 13K21D3A		dwg no:	
					<b>CONEC</b>			13K1A4010	DIN-A3
								part no:	see table

THIS DRAWING MAY NOT BE COPIED OR REPRODUCED IN ANY WAY, AND MAY NOT BE PASSED ON TO A THIRD PARTY WITHOUT WRITTEN PERMISSION. OWNERSHIP AND COPYRIGHT OF CONEC GmbH  
 DO NOT ALTER CAD DRAWING BY HAND