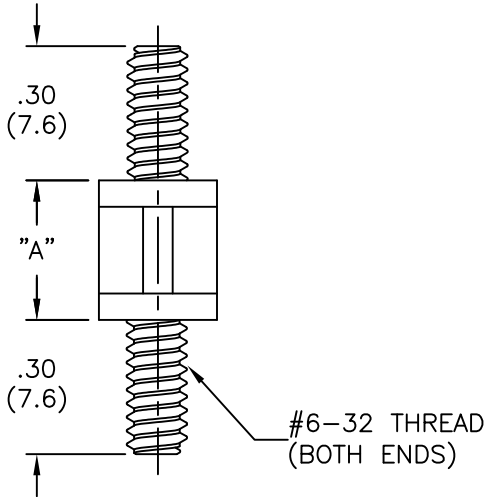
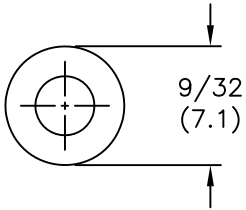


NYLON 6/6 (RMS-01) COLOR: NATURAL PART NO.	FLAME RET. (RMS-19) COLOR: NATURAL PART NO.	"A" ±.015 (±0.4)
CBS-TMM-2-01	CBS-TMM-2-19	1/8 (3.2)
CBS-TMM-4-01	CBS-TMM-4-19	1/4 (6.4)
CBS-TMM-6-01	CBS-TMM-6-19	3/8 (9.5)
CBS-TMM-8-01	CBS-TMM-8-19	1/2 (12.7)
CBS-TMM-10-01	CBS-TMM-10-19	5/8 (15.9)
CBS-TMM-12-01	CBS-TMM-12-19	3/4 (19.1)
CBS-TMM-14-01	CBS-TMM-14-19	7/8 (22.2)
CBS-TMM-16-01	CBS-TMM-16-19	1 (25.4)



NOTES:
 1. M4 THREAD AVAILABLE BY SPECIAL ORDER ONLY.
 TO ORDER, ADD "-M4" TO PART NO.
 EXAMPLE: CBS-TMM-M4-8-XX

G	SEE CO 200666 FOR CHANGES	SK 04.28.11	TITLE: CBS THREADED MALE-MALE						DWG IN IN (MM)	
F	SEE CO 200624 FOR CHANGES	SK 02.14.11	FILE # CBS-TMM		DWN: P.B.	APP:		FINAL		
E	SEE ECN #862 FOR CHANGES	SM 10.04.04	MAT'L: SEE TABLE		DT: 06-20-94	DT:		PART #		
D	UPDATED PRINT AND CHANGED FILE NO.	SM 05.08.02	RE: RICHCO, INC.		RICHCO INC. PO BOX 804238, CHICAGO, 60680 (773) 539-4060		SEE TABLE		PRINT TYPE	
C	FR-NYLON REMOVED FROM CHART	J.L. 8.17.98	TOLERANCES UNLESS NOTED .XX=±.010 .XXX=±.005 FRAC=±1/64 ANG=±1'						CA	
B	MAT'L RMS-19 ADDED	J.L. 12.18.97								
A	CHANGED CHART, ADDED DIMS & NOTES	JB 09.27.95								
REV	DESCRIPTION	ENGR DATE								