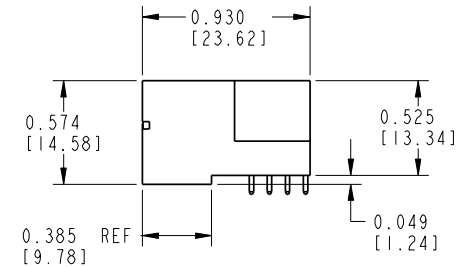
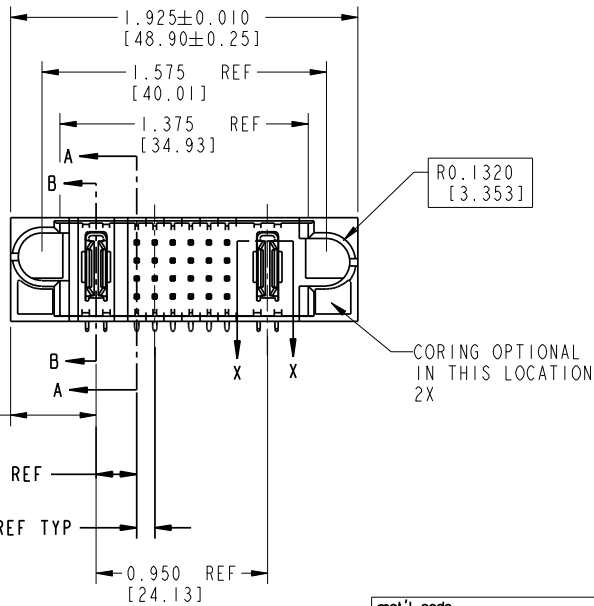
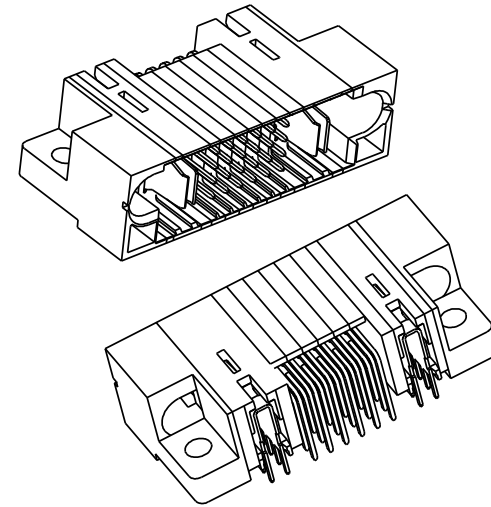
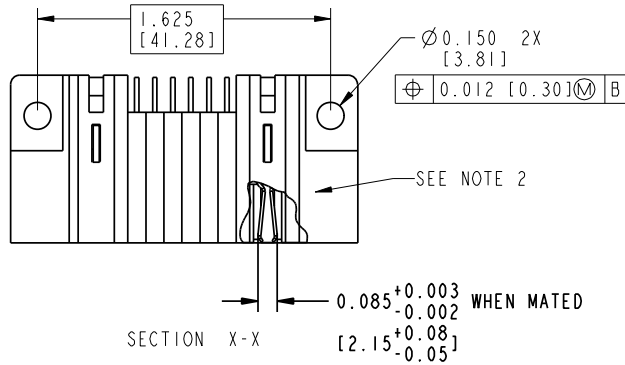


Tous droits strictement réservés. Reproduction ou communication o des tiers interdite sous quelque forme que ce soit sans autorisation écrite du propriétaire. Propriété de c FCI. Droits de reproduction FCI.



All rights strictly reserved. Reproduction or issue to third parties in any form without written authority from the proprietor. Property of FCI. Copyright FCI.

PRODUCT NUMBER
51415-005...
NOTE 7



mat'l code SEE NOTE 1				tolerances unless otherwise specified		CUSTOMER COPY	FCI www.fciconnect.com	
lir	ecn no.	dr	date	linear	.XX±.01/.X±.3	projection	title	
A	DG05-0015	SW	01/24/05		.XXX±.005/.X±.13		IP + 24S + IP	
B	DG06-0011	CS	01/09/06		.XXX±.0020/.XXX±.051	INCH / MM	RIGHT ANGLE SOLDER HEADER	
C	DG07-0068	RYAN	02/15/07	angles	0°±2°		product family PWRBLADE code 213	
				dr	STEVEN WANG 01/24/05	scale 1:1	size	
				enrg	LH 01/24/05		A	
				chr	VICTOR LIN 01/24/05	dwg no 51415-005		
				appd	JOSEPH HSIA 01/24/05	1 OF 3		
sheet index	revision sheet	C 1	C 2	C 3				

form no. 7530-001-I03

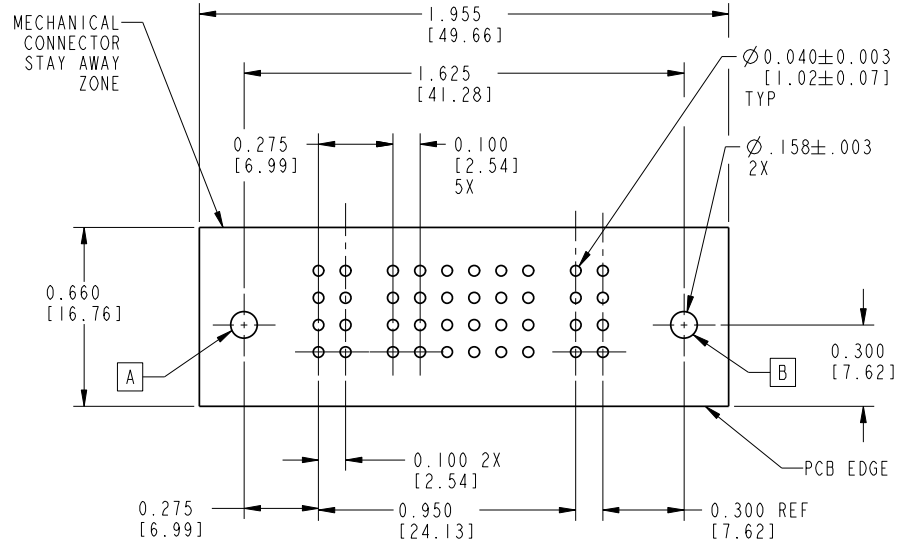
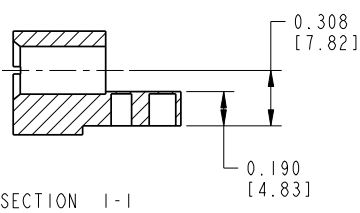
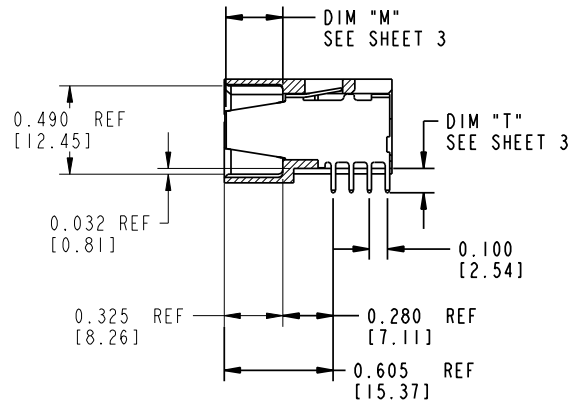
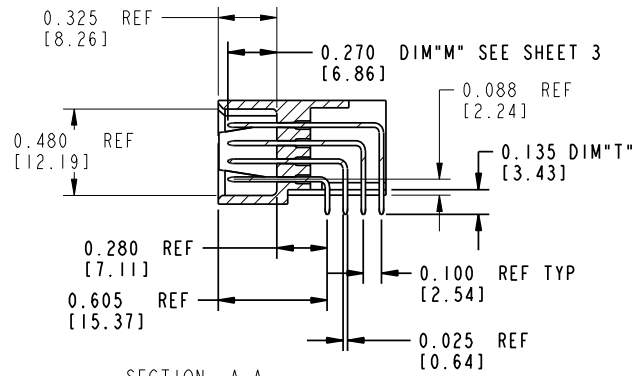
cage code 22526

Tous droits strictement réservés. Reproduction ou communication à des tiers interdite sous quelque forme que ce soit sans autorisation écrite du propriétaire. Propriété de c FCI. Droits de reproduction FCI.



All rights strictly reserved. Reproduction or issue to third parties in any form without written authority from the proprietor. Property of FCI. Copyright FCI.

PRODUCT NUMBER
51415-005_



mat'l code				tolerances unless otherwise specified		CUSTOMER COPY		FCI www.fciconnect.com	
lfr	ecr no.	dr	date	linear	.XX±.01/.X±.3	projection	title IP + 24S + IP RIGHT ANGLE SOLDER HEADER		
C					.XXX±.005/.X±.13		product family PWRBLADE code 213		
				angles	XXX±.0020/.XXX±.05		size dwg no 51415-005		
				dr	0°±2°	INCH / MM	scale 1:1		
				enrg	STEVEN WANG 01/24/05		cage code 22526		
				chr	LH 01/24/05				
				appd	VICTOR LIN 01/24/05				
					JOSEPH HSIA 01/24/05				
sheet index	revision sheet								

form no. 7530-001-I03

Tous droits strictement reserves. Reproduction ou communication a des tiers interdite sous quelque forme que ce soit sans autorisation écrite du propriétaire. Propriete de c FCI. Droits de reproduction FCI.



All rights strictly reserved. Reproduction or issue to third parties in any form without is not permitted without written authority from the proprietor. Property of FCI. Copyright FCI.

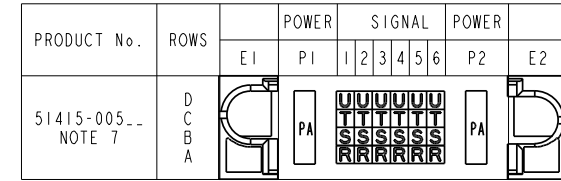
1 | 2

3 |

4

PRODUCT NUMBER	
51415-005_	

ITEM NO.	QTY	DIM "M" MATING LENGTH ±.010		DIM "T" TAIL LENGTH ±.020		CONTACT TYPE
PA	2	N/A	[N/A]	0.135	[3.43]	POWER
R	6	0.270	[6.86]	0.135	[3.43]	SIGNAL
S	6	0.270	[6.86]	0.135	[3.43]	SIGNAL
T	6	0.270	[6.86]	0.135	[3.43]	SIGNAL
U	6	0.270	[6.86]	0.135	[3.43]	SIGNAL



CONNECTORS - NOTES:

- HOUSING MATERIAL: GLASS FILLED HIGH TEMP THERMO PLASTIC
SIGNAL PIN MATERIAL: PHOS. BRONZE
POWER CONTACT MATERIAL: COPPER ALLOY
- "MANUFACTURER" NAME, P/N, AND DATE CODE TO APPEAR ON THIS SURFACE
- MATING CONNECTOR 51416
- INSTALLATION TOOLING P/N N/A
- SUPERSEEDS (N/A)
- PRODUCT SPECIFICATION GES-12-149
- PLATING:
SEE PRINT 10064183 FOR PLATING SPEC OF 51415-005; 51415-005LF

PCB - NOTES

- ALL DIMENSIONS ON PCB LAYOUT ARE BASIC UNLESS OTHERWISE SPECIFIED.
- ALL THROUGH HOLES ARE LOCATED WITH A TRUE POSITION OF .004[0.10] TO DATUM A, B
- ALL HOLE DIAMETERS ARE FINISHED HOLE SIZE
- Ø .158 THROUGH HOLES ARE UNPLATED
- Ø 0.0453 ± 0.0010 [1.151 ± 0.025] DRILLED HOLES PLATED WITH 0.0003 [0.007] MIN SnPb or Sn OVER 0.001 [0.03] TO 0.003 [0.08] Cu PLATING TO ACHIEVE A Ø 0.040 ± 0.003 [1.02 ± 0.08] HOLE

mat'l code SEE NOTE 1				tolerances unless otherwise specified		CUSTOMER		FCI	
lfr	ecr no.	dr	date	linear	.XX±.01/.X±.3	COPY		www.fciconnect.com	
C				angles	.XXX±.005/.X±.13	projection	title		IP + 24S + 1P
				dr	.XXX±.0020/.XXX±.051		RIGHT ANGLE SOLDER HEADER		
				enrg	0°±2°	INCH/MM	product family	PWRBLADE	code
				chr	STEVEN WANG 01/24/05	scale	size	dwg no	213
				appd	LH 01/24/05	1:1	A	51415-005	sheet
sheet index	revision sheet				VICTOR LIN 01/24/05				3 of 3
					JOSEPH HSIA 01/24/05				

1 | 2

Pro/E

3 |

cage code 22526

4