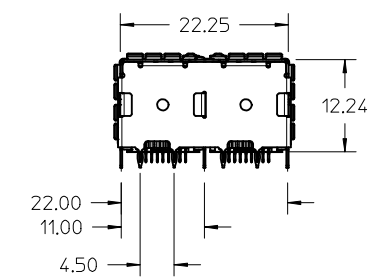
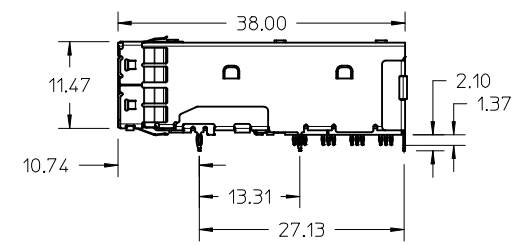
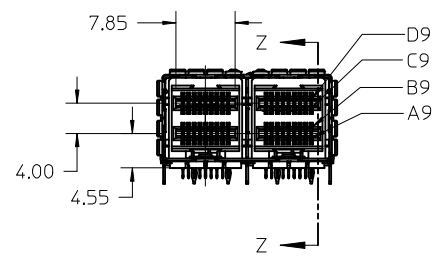


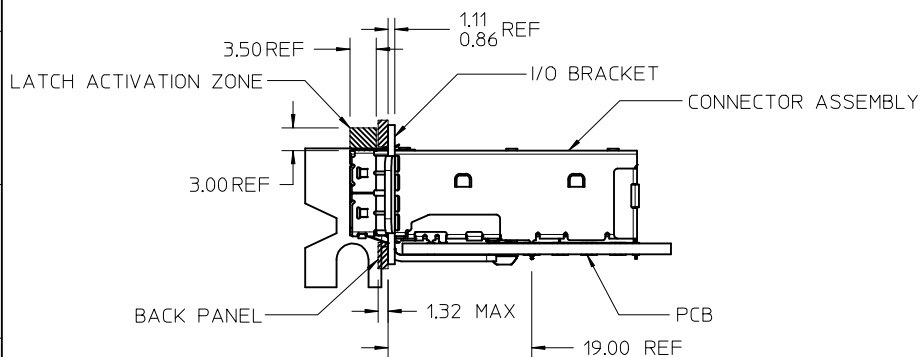
SECTION Z-Z



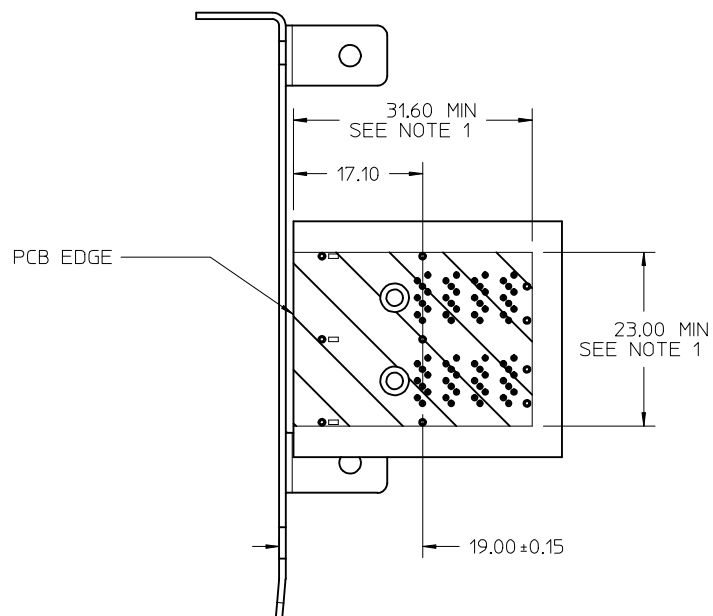
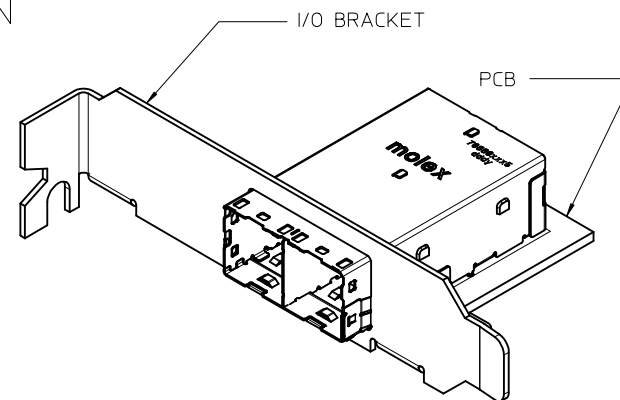
- NOTES:
- MATERIALS:
 - CONNECTOR HOUSING: HIGH TEMPERATURE THERMOPLASTIC GLASS FILLED, UL 94V-0
 - EMI CAGE: NICKEL SILVER ALLOY
 - EMI FINGERS: COPPER ALLOY
 - TERMINALS: COPPER ALLOY
 - FINISHES:
 - EMI FINGERS: 0.50µM MIN NICKEL
 - CONTACT AREA: 0.76µM MIN GOLD OVER 2.54µM MIN NICKEL
 - TAIL AREA: 0.76µM - 1.52µM TIN OVER 2.54µM MIN NICKEL
 - PRODUCT SPECIFICATION: PS-76866-001
 - PACKAGING SPECIFICATION: PK-76866-001
 - MATES WITH: MOLEX CABLE SERIES 111068 & 111073
 - RECOMMENDED MOUNTING HARDWARE: REFER TO APPLICATION SPECIFICATION AS-76866-001
 - PLUG MODULE PCB LAYOUT REFER TO SD-76866-9900

REV'D NOTES EC NO: UCP2015-5060 DRWN:KCALLAGHAN 2015/06/01 CHKD:TMCCLELLAND 2015/06/03 APPR:TMCCLELL 2015/06/18	DESCRIPTION D5	QUALITY SYMBOLS ▽=0 ▽=0	GENERAL TOLERANCES (UNLESS SPECIFIED) <table border="1"> <thead> <tr> <th></th> <th>mm</th> <th>INCH</th> </tr> </thead> <tbody> <tr> <td>4 PLACES</td> <td>± ---</td> <td>± ---</td> </tr> <tr> <td>3 PLACES</td> <td>± ---</td> <td>± ---</td> </tr> <tr> <td>2 PLACES</td> <td>± 0.13</td> <td>± ---</td> </tr> <tr> <td>1 PLACE</td> <td>± 0.25</td> <td>± ---</td> </tr> </tbody> </table> ANGULAR ±1/2°		mm	INCH	4 PLACES	± ---	± ---	3 PLACES	± ---	± ---	2 PLACES	± 0.13	± ---	1 PLACE	± 0.25	± ---	DIMENSION STYLE MM ONLY	SCALE 2:1	DESIGN UNITS METRIC	THIRD ANGLE PROJECTION
		mm	INCH																			
	4 PLACES	± ---	± ---																			
	3 PLACES	± ---	± ---																			
2 PLACES	± 0.13	± ---																				
1 PLACE	± 0.25	± ---																				
			DRAWN BY KLANG	DATE 2009/04/21	TITLE IPASS PLUS HD 1X2 ASSY																	
			CHECKED BY TMCCLELLAND	DATE 2010/01/14	APPROVED BY MBANAKIS																	
			DATE 2010/01/14	MATERIAL NO. 76866-0015	DOCUMENT NO. SD-76866-005	SHEET NO. 1 OF 6	THIS DRAWING CONTAINS INFORMATION THAT IS PROPRIETARY TO MOLEX INCORPORATED AND SHOULD NOT BE USED WITHOUT WRITTEN PERMISSION															

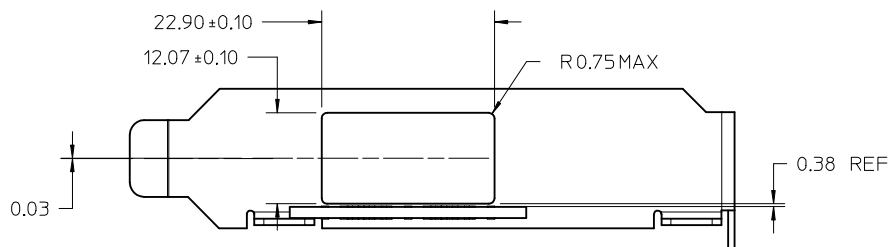
PCI ADD-IN CARD APPLICATION



ASSEMBLED VIEW
PCI ADD-IN CARD APPLICATION



PCI ADD-IN CARD APPLICATIONS



I/O BRACKET CUT OUT
(BRACKET NOT INCLUDED)

NOTES:
1. CONNECTOR KEEPOUT AREA

SEE SHEET 1 EC NO: UCP2015-5060 DRWN: KALLAGHAN 2015/06/01 CHKD: TMCCLELLAND 2015/06/03 APPR: TMCCLELL 2015/06/18	QUALITY SYMBOLS ▽=0 ▽=0	GENERAL TOLERANCES (UNLESS SPECIFIED) mm INCH 4 PLACES ± --- ± --- 3 PLACES ± --- ± --- 2 PLACES ± 0.13 ± --- 1 PLACE ± 0.25 ± --- ANGULAR ± 1/2°	DIMENSION STYLE MM ONLY DRAWN BY DATE KLANG 2009/04/21 CHECKED BY DATE TMCCLELLAND 2010/01/14 APPROVED BY DATE MBANAKIS 2010/01/14	SCALE 2:1 DESIGN UNITS METRIC THIRD ANGLE PROJECTION	TITLE IPASS PLUS HD 1X2 ASSY
	MATERIAL NO.		MOLEX INCORPORATED		SHEET NO. 2 OF 6
	DRAFT WHERE APPLICABLE MUST REMAIN WITHIN DIMENSIONS		SEE SHEET 1		DOCUMENT NO. SD-76866-005
	THIS DRAWING CONTAINS INFORMATION THAT IS PROPRIETARY TO MOLEX INCORPORATED AND SHOULD NOT BE USED WITHOUT WRITTEN PERMISSION				

ALL OTHER (M/B) APPLICATIONS

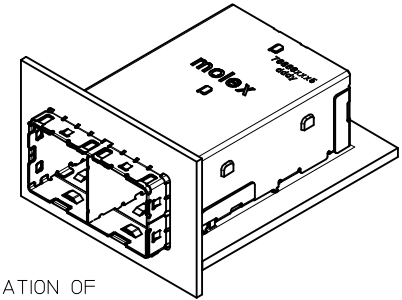
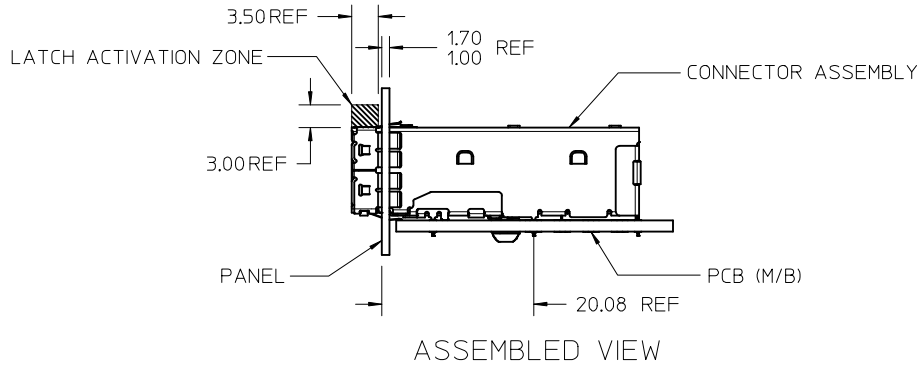
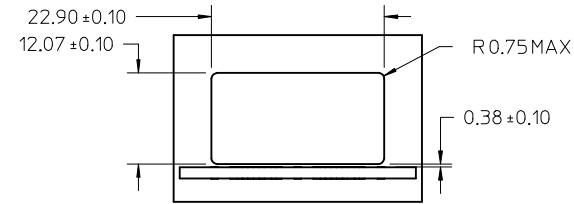
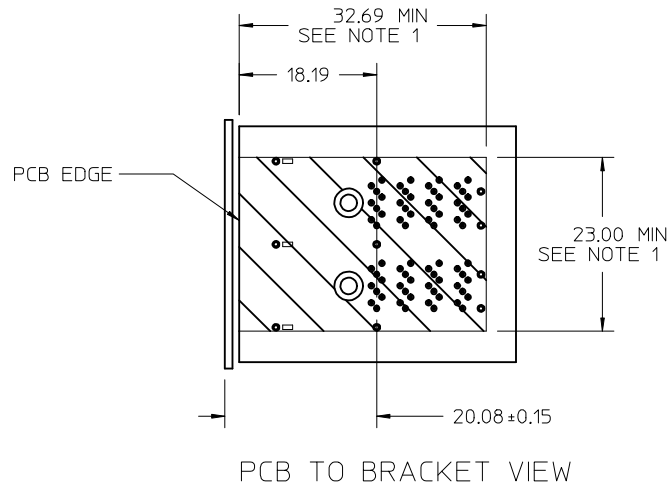


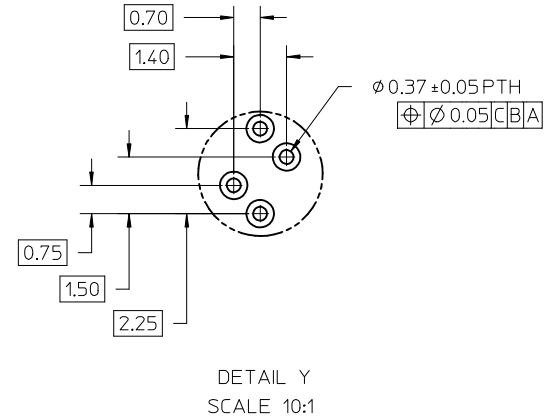
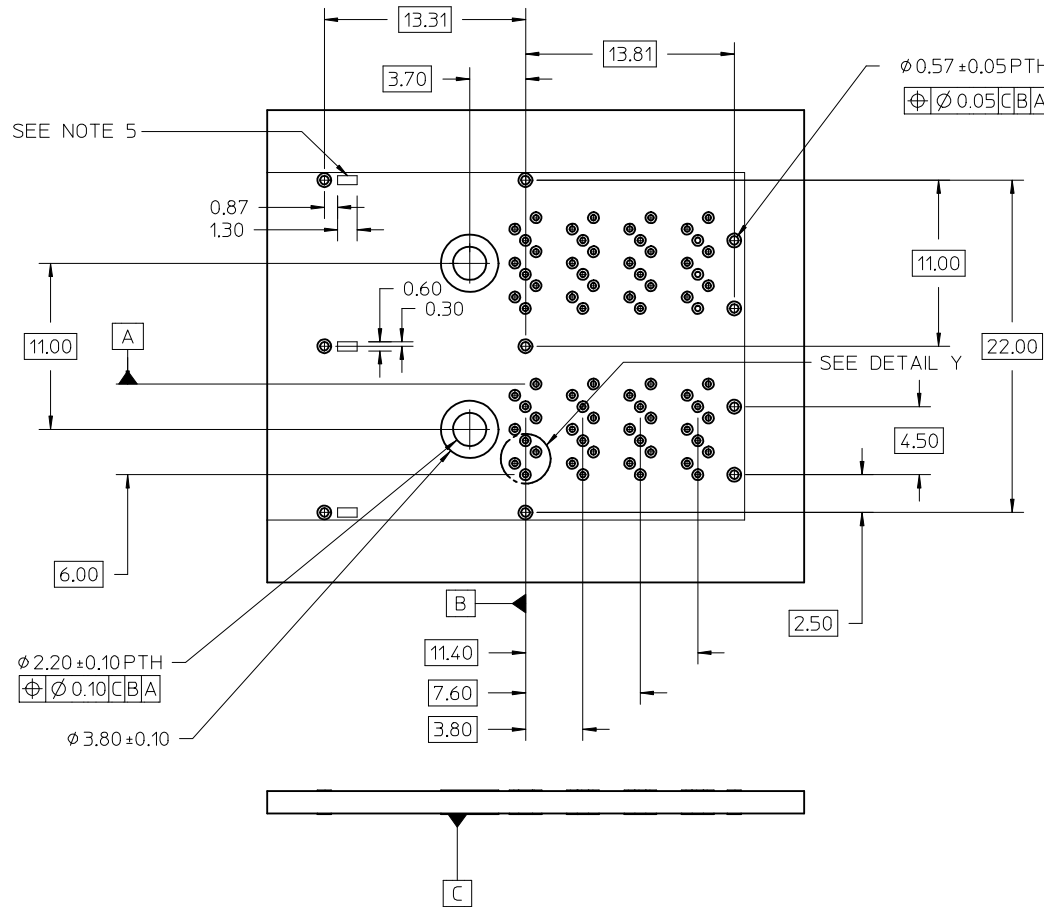
ILLUSTRATION OF ALL OTHER M/B BRACKET APPLICATION



NOTES:
1. CONNECTOR KEEPOUT AREA

SEE SHEET 1 EC NO: UCP2015-5060 DRWNK: CALLAGHAN 2015/06/01 CHKD: TMCLELLAND 2015/06/03 APPR: TMCLELL 2015/06/18 D5	QUALITY SYMBOLS ▽=0 ▽=0 ▽=0	GENERAL TOLERANCES (UNLESS SPECIFIED) <table border="1"> <tr> <th></th> <th>mm</th> <th>INCH</th> </tr> <tr> <td>4 PLACES</td> <td>± ---</td> <td>± ---</td> </tr> <tr> <td>3 PLACES</td> <td>± ---</td> <td>± ---</td> </tr> <tr> <td>2 PLACES</td> <td>± 0.13</td> <td>± ---</td> </tr> <tr> <td>1 PLACE</td> <td>± 0.25</td> <td>± ---</td> </tr> </table>		mm	INCH	4 PLACES	± ---	± ---	3 PLACES	± ---	± ---	2 PLACES	± 0.13	± ---	1 PLACE	± 0.25	± ---	DIMENSION STYLE MM ONLY DRAWN BY DATE KLANG 2009/04/21 CHECKED BY DATE TMCLELLAND 2010/01/14 APPROVED BY DATE MBANAKIS 2010/01/14	SCALE 2:1 TITLE IPASS PLUS HD 1X2 ASSY	DESIGN UNITS METRIC THIRD ANGLE PROJECTION
		mm	INCH																	
	4 PLACES	± ---	± ---																	
	3 PLACES	± ---	± ---																	
2 PLACES	± 0.13	± ---																		
1 PLACE	± 0.25	± ---																		
DRAFT WHERE APPLICABLE MUST REMAIN WITHIN DIMENSIONS		MATERIAL NO. SEE SHEET 1	MOLEX INCORPORATED	SHEET NO. 3 OF 6																
THIS DRAWING CONTAINS INFORMATION THAT IS PROPRIETARY TO MOLEX INCORPORATED AND SHOULD NOT BE USED WITHOUT WRITTEN PERMISSION																				
DOCUMENT NO. SD-76866-005																				

RECOMMENDED FOOTPRINT



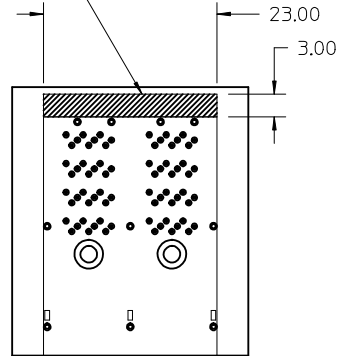
NOTES:

1. RECOMMENDED DRILL SIZE AND ANNULAR RING FOR A 0.37ϕ FINISHED PTH - REFER TO APPLICATION SPECIFICATION AS-76866-001
2. MINIMUM RECOMMENDED SPACING: 25.00MM
3. MINIMUM PCB THICKNESS: 1.57MM
4. RECOMMENDED DRILL SIZE AND ANNULAR RING FOR A 0.57ϕ FINISHED PTH - REFER TO APPLICATION SPECIFICATION AS-76866-001
5. CAGE STAND OFF AREA, NO TRACES ON SURFACE OF PCB IN THESE AREAS

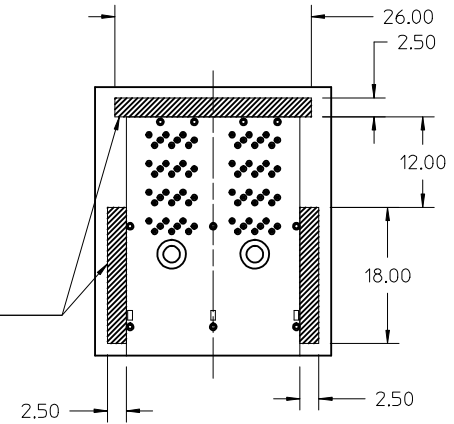
SEE SHEET 1 EC NO: UCP2015-5060 DRAWN: KALLAGHAN 2015/06/01 CHKD: TMCLELLAND 2015/06/03 APPR: TMCLELL 2015/06/18	QUALITY SYMBOLS ▽=0 ▽=0	GENERAL TOLERANCES (UNLESS SPECIFIED)		DIMENSION STYLE MM ONLY		SCALE 4:1	DESIGN UNITS METRIC	THIRD ANGLE PROJECTION	
		mm	INCH	DRAWN BY KLANG	DATE 2009/04/21	TITLE IPASS PLUS HD 1X2 ASSY			
D5	REV	4 PLACES ± --- ± ---		CHECKED BY TMCLELLAND	DATE 2010/01/14	MOLEX INCORPORATED DOCUMENT NO. SD-76866-005 SHEET NO. 4 OF 6			
		3 PLACES ± --- ± ---		APPROVED BY MBANAKIS	DATE 2010/01/14				
		2 PLACES ± 0.13 ± ---		SEE SHEET 1					
		1 PLACE ± 0.25 ± ---		THIS DRAWING CONTAINS INFORMATION THAT IS PROPRIETARY TO MOLEX INCORPORATED AND SHOULD NOT BE USED WITHOUT WRITTEN PERMISSION					
		ANGULAR ± 1/2°		DRAFT WHERE APPLICABLE MUST REMAIN WITHIN DIMENSIONS					

RECOMMENDED TOOLING KEEP OUT AREAS

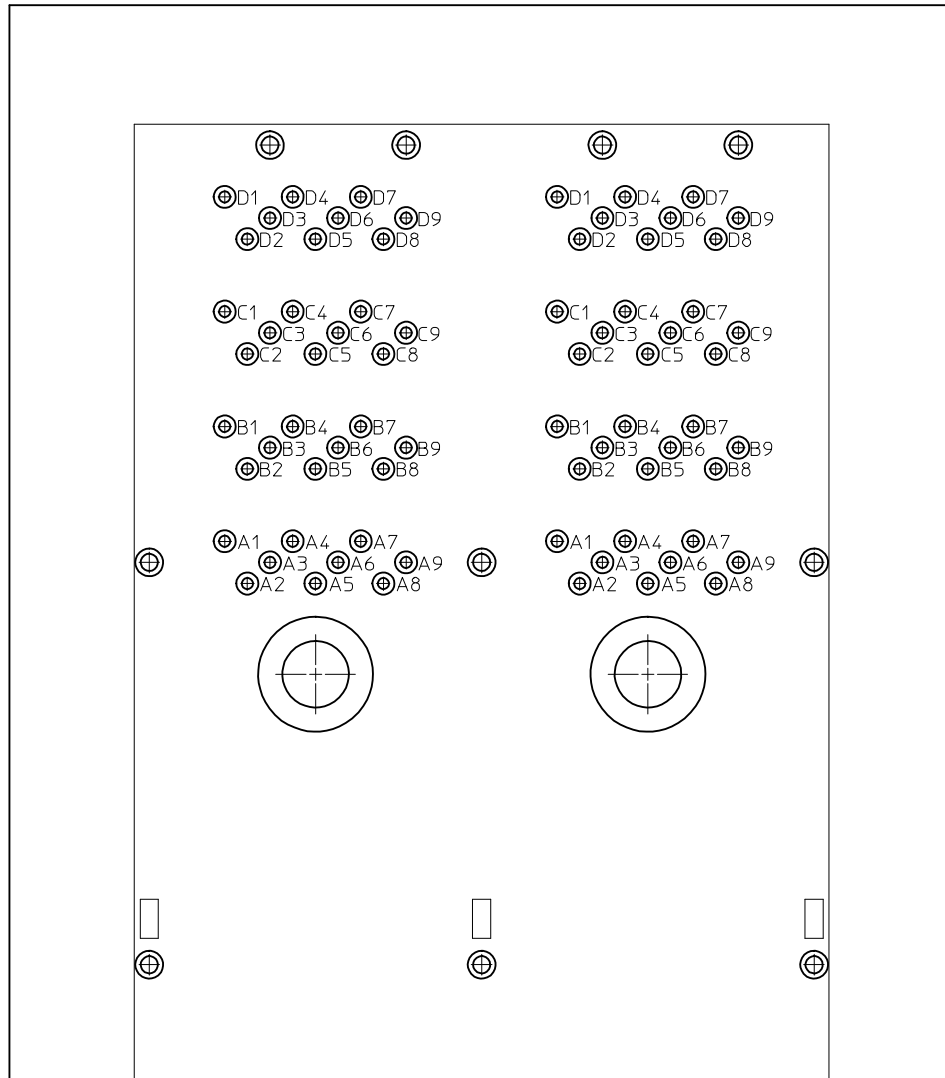
RECOMMENDED INSERTION TOOL
KEEP OUT AREA
NO COMPONENTS IN THIS AREA
MORE THAN 7.50 mm TALL



RECOMMENDED EXTRACTION TOOL
KEEP OUT AREA
NO COMPONENTS IN THESE AREAS



SEE SHEET 1 EC NO: UCP2015-5060 DRWNK:CALLAGHAN 2015/06/01 CHKD:TMCCLELLAND 2015/06/03 APPR:TMCCLELL 2015/06/18	DESCRIPTION REV	QUALITY SYMBOLS	GENERAL TOLERANCES (UNLESS SPECIFIED)		DIMENSION STYLE	SCALE	DESIGN UNITS	THIRD ANGLE PROJECTION		
		▽=0	mm	INCH	MM ONLY	2:1	METRIC	IPASS PLUS HD 1X2 ASSY		
		▽=0	4 PLACES ± ---	± ---	DRAWN BY DATE	TITLE				
		▽=0	3 PLACES ± ---	± ---	KLANG 2009/04/21	APPROVED BY DATE				
			2 PLACES ± 0.13	± ---	TMCCLELLAND 2010/01/14	MATERIAL NO.				
			1 PLACE ± 0.25	± ---	MBANAKIS 2010/01/14	DOCUMENT NO.				
			ANGULAR ± 1/2°		SEE SHEET 1		MOLEX INCORPORATED		SHEET NO.	
			DRAFT WHERE APPLICABLE MUST REMAIN WITHIN DIMENSIONS		SIZE		SD-76866-005		5 OF 6	
			THIS DRAWING CONTAINS INFORMATION THAT IS PROPRIETARY TO MOLEX INCORPORATED AND SHOULD NOT BE USED WITHOUT WRITTEN PERMISSION							



CIRCUIT IDENTIFICATION

SEE SHEET 1 EC NO: UCP2015-5060 DRWNK:CALLAGHAN 2015/06/01 CHKD:TMCCLELLAND 2015/06/03 APPR:TMCCLELL 2015/06/18	QUALITY SYMBOLS ▼=0 ▽=0	GENERAL TOLERANCES (UNLESS SPECIFIED) <table border="1"> <thead> <tr> <th></th> <th>mm</th> <th>INCH</th> </tr> </thead> <tbody> <tr> <td>4 PLACES</td> <td>± ---</td> <td>± ---</td> </tr> <tr> <td>3 PLACES</td> <td>± ---</td> <td>± ---</td> </tr> <tr> <td>2 PLACES</td> <td>± 0.13</td> <td>± ---</td> </tr> <tr> <td>1 PLACE</td> <td>± 0.25</td> <td>± ---</td> </tr> </tbody> </table>		mm	INCH	4 PLACES	± ---	± ---	3 PLACES	± ---	± ---	2 PLACES	± 0.13	± ---	1 PLACE	± 0.25	± ---	DIMENSION STYLE MM ONLY	SCALE 8:1	DESIGN UNITS METRIC	THIRD ANGLE PROJECTION
		mm	INCH																		
	4 PLACES	± ---	± ---																		
	3 PLACES	± ---	± ---																		
2 PLACES	± 0.13	± ---																			
1 PLACE	± 0.25	± ---																			
DRAWN BY KLANG	DATE 2009/04/21	TITLE IPASS PLUS HD 1X2 ASSY																			
CHECKED BY TMCCLELLAND	DATE 2010/01/14	APPROVED BY MBANAKIS																			
DATE 2010/01/14	MATERIAL NO. SEE SHEET 1	DOCUMENT NO. SD-76866-005	SHEET NO. 6 OF 6																		

DRAFT WHERE APPLICABLE MUST REMAIN WITHIN DIMENSIONS

SIZE C THIS DRAWING CONTAINS INFORMATION THAT IS PROPRIETARY TO MOLEX INCORPORATED AND SHOULD NOT BE USED WITHOUT WRITTEN PERMISSION