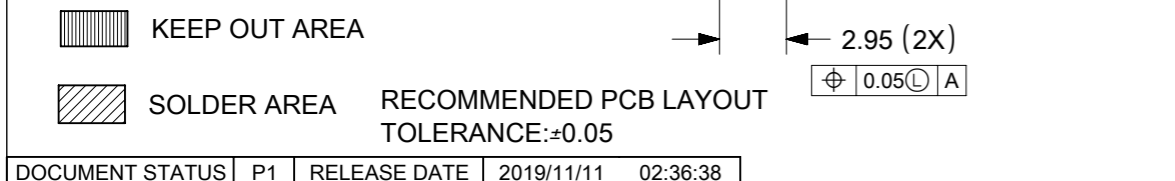
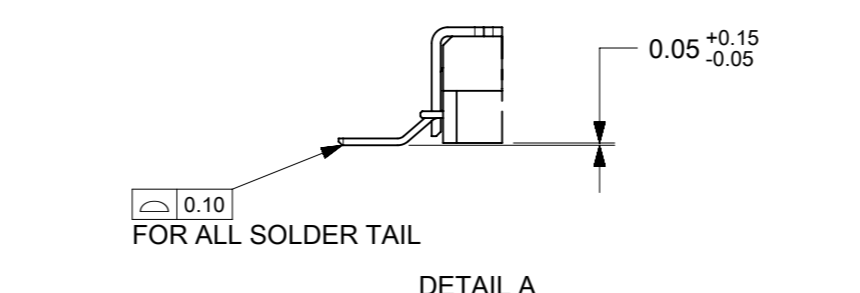


- NOTES:
- MATERIAL: CAM: NYLON, GLASS FILLED, UL94V-0, COLOR:BLACK
HOUSING : LCP, GLASS FILLED, UL94V-0, COLOR:BLACK
TERMINAL : PHOSPHOR BRONZE
SHELL: STAINLESS STEEL
SPRING: SWPB
CAM PIN:STAINLESS STEEL
 - FINISH: TERMINAL: 50μ" MIN NICKEL UNDER PLATED
30μ" MIN GOLD PLATING ON CONTACT AREA
50μ" MIN TIN ON SOLDERING AREA
SHELL: 50μ" MIN NICKEL UNDER PLATED
GOLD FLASH ON SOLDERING AREA
SPRING: 60μ" MIN NICKEL OVER 100μ" MIN CUPRUM UNDERPLATED
 - THIS PART IS LEAD-FREE.



1050340001	PUSH PUSH SIM WITHOUT POST
PART NO.	DESCRIPTION

THIS DRAWING CONTAINS INFORMATION THAT IS PROPRIETARY TO MOLEX ELECTRONIC TECHNOLOGIES, LLC AND SHOULD NOT BE USED WITHOUT WRITTEN PERMISSION		CURRENT REV DESC:		molex		
DIMENSION UNITS	SCALE	EC NO: 624787				
mm	3:1	DRWN: VLOKESHA 2019/06/13		2.6MM H, 6 PIN PUSH-PUSH SIM CONNECTOR		
GENERAL TOLERANCES (UNLESS SPECIFIED)		CHK'D: GGA 2019/11/11				
4 PLACES ±		APPR: GGA 2019/11/11		PRODUCT CUSTOMER DRAWING		
3 PLACES ±		INITIAL REVISION:		DOCUMENT NUMBER		
2 PLACES ± 0.15 ±		DRWN: YWANG 2007/12/21		SD-105034-001		
1 PLACE ± 0.2 ±		APPR: HWWANG 2007/12/21		DOC TYPE		
0 PLACES ±		ANGULAR TOL ± 2.0°		PSD		
DRAFT WHERE APPLICABLE MUST REMAIN WITHIN DIMENSIONS		THIRD ANGLE PROJECTION	DRAWING	SERIES	MATERIAL NUMBER	CUSTOMER
			A3-SIZE	105034	SEE TABLE	GENERAL MARKET
						SHEET NUMBER
						1 OF 1