

100100-1 ✓ ACTIVE

[Positive Lock](#) | [Positive Lock 250](#)

TE Internal #: 100100-1

Crimp Terminal Housings, Receptacle, Receptacle, 2 Position,  
Straight, UL 94V-0, Black, Polyamide, Mating Alignment, Positive  
Lock 250

[View on TE.com >](#)



Terminals & Splices > Terminal Housings, Insulation Sleeves & Blocks > Crimp Terminal Housings



Terminal Type: **Receptacle**

Connector & Housing Type: **Receptacle**

Number of Positions: **2**

Terminal Orientation: **Straight**

UL Flammability Rating: **UL 94V-0**

## Features

### Product Type Features

Sealable	No
Connector System	Wire-to-Board, Wire-to-Wire
Connector & Contact Terminates To	Wire & Cable
Connector & Housing Type	Receptacle

### Configuration Features

Number of Positions	2
---------------------	---

### Body Features

Primary Product Color	Black
-----------------------	-------

### Contact Features

Terminal Type	Receptacle
Terminal Orientation	Straight
Contact Mating Retention	Without

### Mechanical Attachment



Mating Alignment Type	Polarization
Mating Alignment	With
Connector Mounting Type	Cable Mount (Free-Hanging)

### Housing Features

Housing Material	Polyamide
Centerline (Pitch)	6.3 mm[.248 in]

### Usage Conditions

Operating Temperature Range	-40 – 105 °C[-40 – 221 °F]
-----------------------------	----------------------------

### Industry Standards

UL Flammability Rating	UL 94V-0
------------------------	----------

### Packaging Features

Packaging Quantity	5500
Packaging Method	Carton

## Product Compliance

[For compliance documentation, visit the product page on TE.com>](#)

EU RoHS Directive 2011/65/EU	Compliant
EU ELV Directive 2000/53/EC	Compliant
China RoHS 2 Directive MIIT Order No 32, 2016	No Restricted Materials Above Threshold
EU REACH Regulation (EC) No. 1907/2006	Current ECHA Candidate List: JUNE 2023 (235) Candidate List Declared Against: JAN 2019 (197) Does not contain REACH SVHC
Halogen Content	Not Yet Reviewed for halogen content
Solder Process Capability	Not applicable for solder process capability

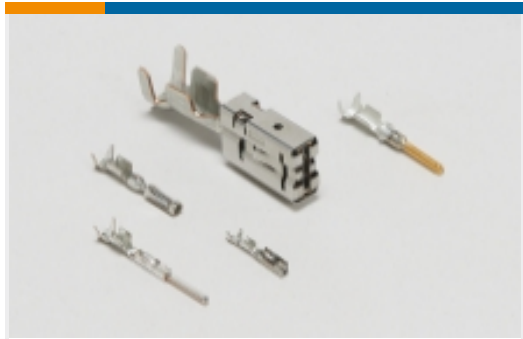
#### Product Compliance Disclaimer

This information is provided based on reasonable inquiry of our suppliers and represents our current actual knowledge based on the information they provided. This information is subject to change. The part numbers that TE has identified as EU RoHS compliant have a maximum concentration of 0.1% by weight in homogenous materials for lead, hexavalent chromium, mercury, PBB, PBDE, DBP, BBP, DEHP, DIBP, and 0.01% for cadmium, or qualify for an exemption to these limits as defined in the Annexes of Directive 2011/65/EU (RoHS2). Finished electrical and electronic equipment products will be CE marked as required by Directive 2011/65/EU. Components may not be CE marked. Additionally, the part numbers that TE has identified as EU ELV compliant have a maximum concentration of 0.1% by weight in homogenous materials for lead, hexavalent chromium, and mercury, and 0.01% for cadmium, or qualify for an exemption to these limits as defined in the Annexes of Directive 2000/53/EC (ELV). Regarding the REACH Regulation, the information TE provides on SVHC in articles for this part number is based on the latest European Chemicals Agency (ECHA) 'Guidance on requirements for substances in articles' posted at this URL: <https://echa.europa.eu/guidance-documents/guidance-on-reach>

## Compatible Parts

 <p>TE Part # 926330-1 PL 250 REC HSG 6P NYLON BLACK</p>	 <p>TE Part # 926646-1 PL 250 REC HSG 8P NYLON BLACK</p>	 <p>TE Part # 926526-1 PL MKI 250 REC HSG 5P NYLON BLACK</p>	 <p>TE Part # 926523-1 3P.POS.LOCK HSG</p>
 <p>TE Part # 926319-1 PL 250 REC HSG 2P NYLON BLACK</p>	 <p>TE Part # 927389-2 POSITIVE LOCK 3P HOUSING PA 6.6 WHITE</p>	 <p>TE Part # 927076-1 PL HOUSING 0.6 PA 6.6 + PE-GF13 BLACK</p>	 <p>TE Part # 926521-2 PL 250 REC HSG 2P NYLON BLACK</p>
 <p>TE Part # 926522-2 PL 250 REC HSG 2P NYLON NAT</p>	 <p>TE Part # 926522-1 PL 250 REC HSG 2P NYLON BLACK</p>	 <p>TE Part # 1-926522-1 PL 250 REC HSG 2P NYLON BLACK</p>	 <p>TE Part # 185010-2 HEADLIGHT HOUSING HOUSING</p>
 <p>TE Part # 178833-1 POSITIVE LOCK .250 HOUSING RECEPTACLE</p>	 <p>TE Part # 172864-2 250 HSG. REC. 6mm 2P BLACK</p>	 <p>TE Part # 1-2133341-2 250 HSG. PL MKI REC. NAT</p>	 <p>TE Part # 365016-1 POSITIVE LOCK (PL) HSG REC</p>
 <p>TE Part # 927389-1 PL 3P HOUSING PA66 BLACK</p>	 <p>TE Part # 927422-1 POSITIVE LOCK 3P HOUSING PA6.6 BLACK</p>	 <p>TE Part # 1-926522-2 PL 250 REC HSG 2P NYLON NAT</p>	 <p>TE Part # 172433-2 250 AUTOMOTIVE POSTIVE LOCK 2P</p>

Also in the Series | [Positive Lock 250](#)



Automotive Terminals(1)



Crimp Terminal Housings(193)



Insertion & Extraction Tools(3)

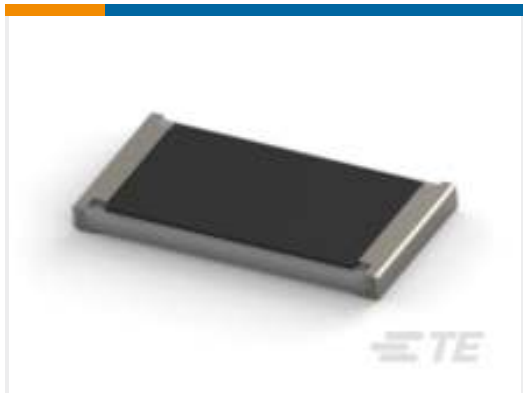


Insulation Boots & Sleeves(4)



Quick Disconnects(186)

## Customers Also Bought



TE Part #3-2176070-4  
SMD Power Resistor: 2 Watt, 3521 Series



TE Part #2138529-1  
STRAIN RELIEF, 8 POSITION AMPSEAL



TE Part #2103013-1  
CABLE SEAL RETAINER, SIZE 1, HVA280



TE Part #1-2176349-6  
CRGCO 2512 180R 1%



TE Part #DTM06-08SB  
DEUTSCH DTM Housings



TE Part #4-2103015-5  
PLUG SUBASSY, E, HVA280-2PHM F



TE Part #4-2103015-2  
PLUG SUBASSY, B, HVA280-2PHM F



TE Part #1587977-2  
INNER HOUSING, PLUG, HVA280-2PHM, PASS T

## Documents

### Product Drawings

2 POS POSITIVE LOCK (PL) HOUSING

English

### CAD Files

3D PDF

3D

Customer View Model



[ENG\\_CVM\\_CVM\\_100100-1\\_O.2d\\_dxf.zip](#)

English

**Customer View Model**

[ENG\\_CVM\\_CVM\\_100100-1\\_O.3d\\_igs.zip](#)

English

**Customer View Model**

[ENG\\_CVM\\_CVM\\_100100-1\\_O.3d\\_stp.zip](#)

English

By downloading the CAD file I accept and agree to the [Terms and Conditions](#) of use.

---

**Agency Approvals**

**UL Report**

English