

THIS DRAWING IS UNPUBLISHED.

RELEASED FOR PUBLICATION

2002

© COPYRIGHT 2002

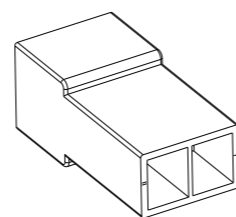
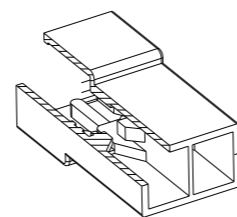
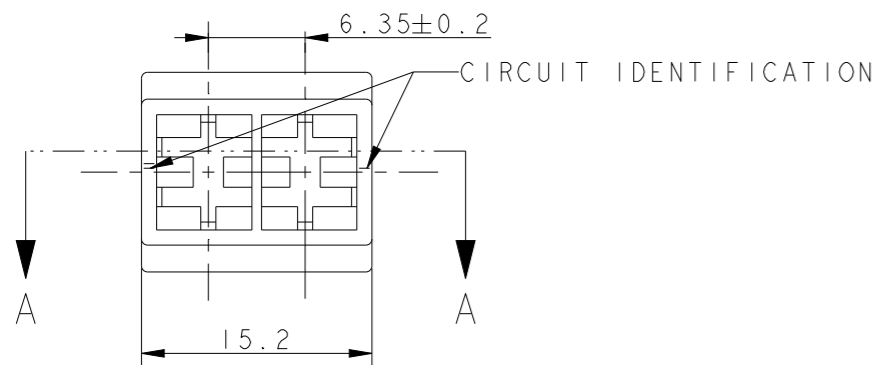
ALL RIGHTS RESERVED.

LOC
IR

DIST
-

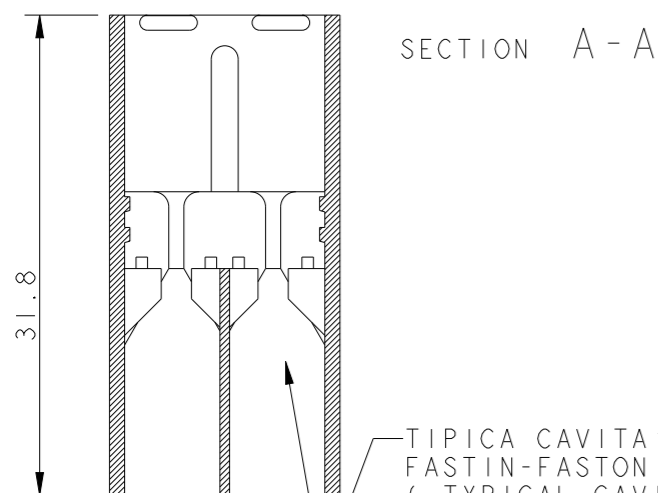
REVISIONS

P	LTR	DESCRIPTION	DATE	DWN	APVD
	AM9	CIRCUIT IDENTIFICATION CORRECTED	30JUN2011	PKS	RRP
	ANI	REVISED PER ECR-21-101990	19APR2021	SS	EW

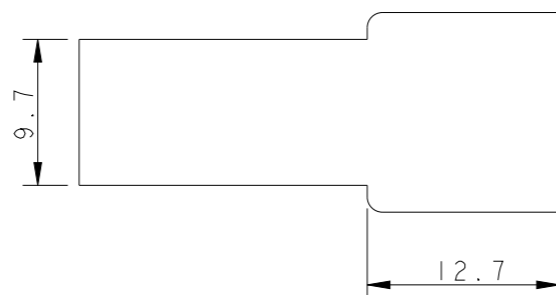
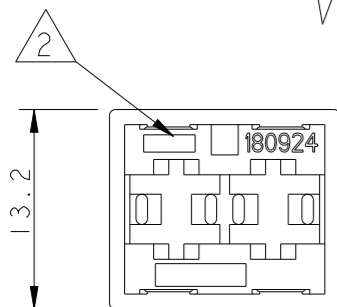


SCALE 1:1

- 1 MARCHIO (TRADEMARK / LOGO)
- 2 NUMERO DI IMPRONTA STAMPO (MOULD CAVITY IDENTIFICATION NO.)
- 3 RISERVATO PER TE JAPAN (RESTRICTED FOR TE JAPAN)
- 4 NON DISPONIBILE DA TE ITALIA (NO MORE AVAILABLE FROM TE ITALY)
- 5 RISERVATO PER TE DE FRANCE (RESTRICTED FOR TE DE FRANCE)
- 6 P/Ns 180924-0/-1/-5/2-...-0: DISPONIBILE DA TE GB VERSIONE CON CAVITA' ASIMMETRICHE, RISPETTIVAMENTE CON I P/Ns 1337024-1/-2/-3/-4. (P/Ns 180924-0/-1/-5/2-...-0: ASYMMETRIC CAVITIES VERSION AVAILABLE FROM TE GB RESPECTIVELY WITH P/Ns 1337024-1/-2/-3/-4).
- 7 ACCEPTED ONE RETENTION RIB FOR THE TOTAL LENGTH OF THE HOUSING ON BOTH SIDES.
- 8 OBSOLETE PARTS: OBSOLETE CIS STREAMLINING PER D.RENAUD/D.SINISI
- 9 INTERNAL FLASH INSIDE CAVITY (THIN AND FLEXIBLE THAT DO NOT COME OFF) ACCEPTABLE UP TO 0.15 mm. EXTERNAL FLASH ACCEPTABLE UP TO 0.4 mm



TIPICA CAVITA' PER TERMINALE TE FASTIN-FASTON SR. 6.35mm.
(TYPICAL CAVITY FOR TE CONTACT FASTIN-FASTON .250" SRS.)

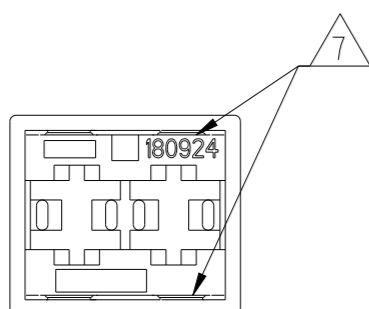


8 OBSOLETE

8 OBSOLETE

NOTE	COLORE (COLOUR)	MATERIALE (MATERIAL)	REV.	NUMERO (PART NUMBER)
3	NATURALE (NATURAL)	PA 6.6 (VERGINE) (PA 6.6, VIRGIN)	AM	0-180924-0
4	NATURALE (NATURAL)	PA 6.6 UL94-V0 (PA 6.6 UNFILLED UL94-V0)	AM	4-180924-0
5	NATURALE (NATURAL)	PA 6.6 (PA 6.6 UNFILLED)	AM	3-280924-0
4	VIOLETTO (VIOLET)	PA 6.6 (PA 6.6 UNFILLED)	AM	0-180924-8
4	MARRONE (BROWN)		AM	0-180924-6
6	NERO (BLACK)		AM	0-180924-5
4	GIALLO (YELLOW)		AM	0-180924-4
6	ROSSO (RED)		AM	0-180924-1
6	NATURALE (NATURAL)		AM	0-180924-0

ALTERNATIVE VIEW FOR RETENTION RIBS



THIS DRAWING IS A CONTROLLED DOCUMENT.

DWN 09JUL2002 H. YAALI

CHK C. TARTARI

APVD

PRODUCT SPEC 108-20020

APPLICATION SPEC

WEIGHT 2.2 g

CUSTOMER DRAWING

DIMENSIONS:	TOLERANCES UNLESS OTHERWISE SPECIFIED:
mm	
0 PLC	±-
1 PLC	±0.3
2 PLC	±-
3 PLC	±-
4 PLC	±-
ANGLES	±2°
FINISH	SEE TABLE

MATERIAL	FINISH
SEE TABLE	SEE TABLE

STE TE Connectivity

FASTIN-FASTON Connector, .250 srs. TAB HOUSING, 2 POSITIONS

SIZE CAGE CODE DRAWING NO RESTRICTED TO

A300779 C-180924

SCALE 2:1 SHEET 1 OF 1 REV ANI