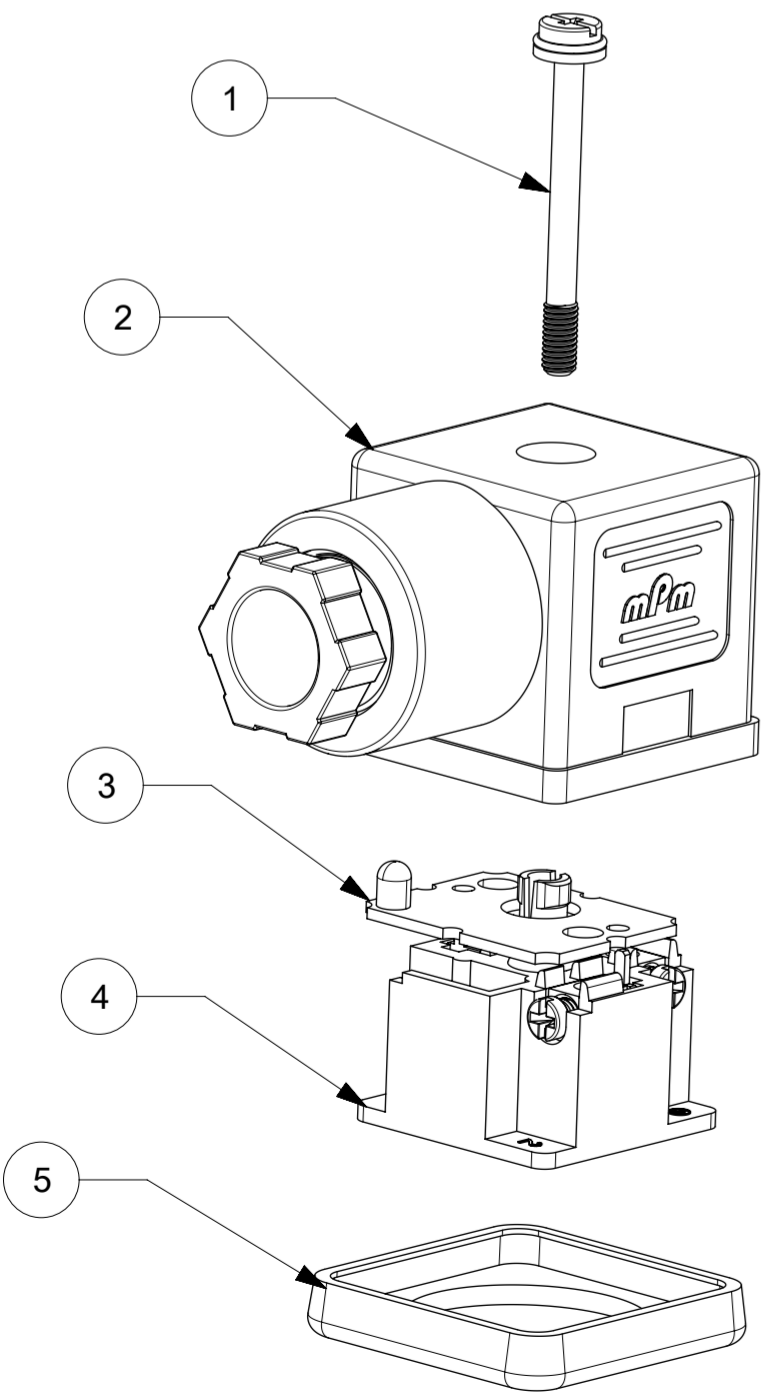


S18 3 09 T A1 2 2 **

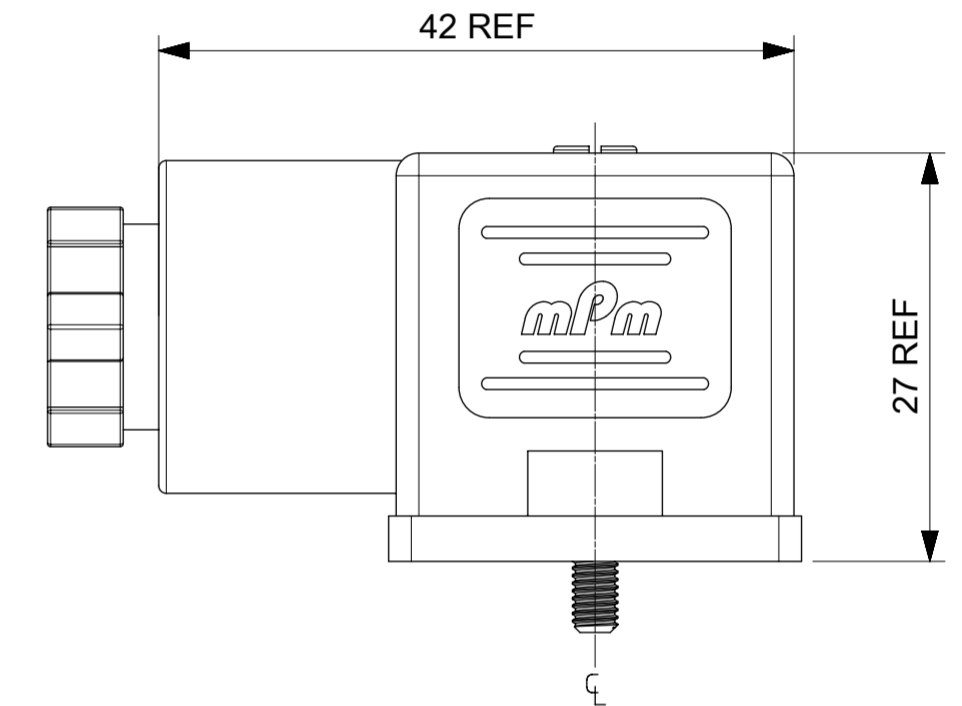
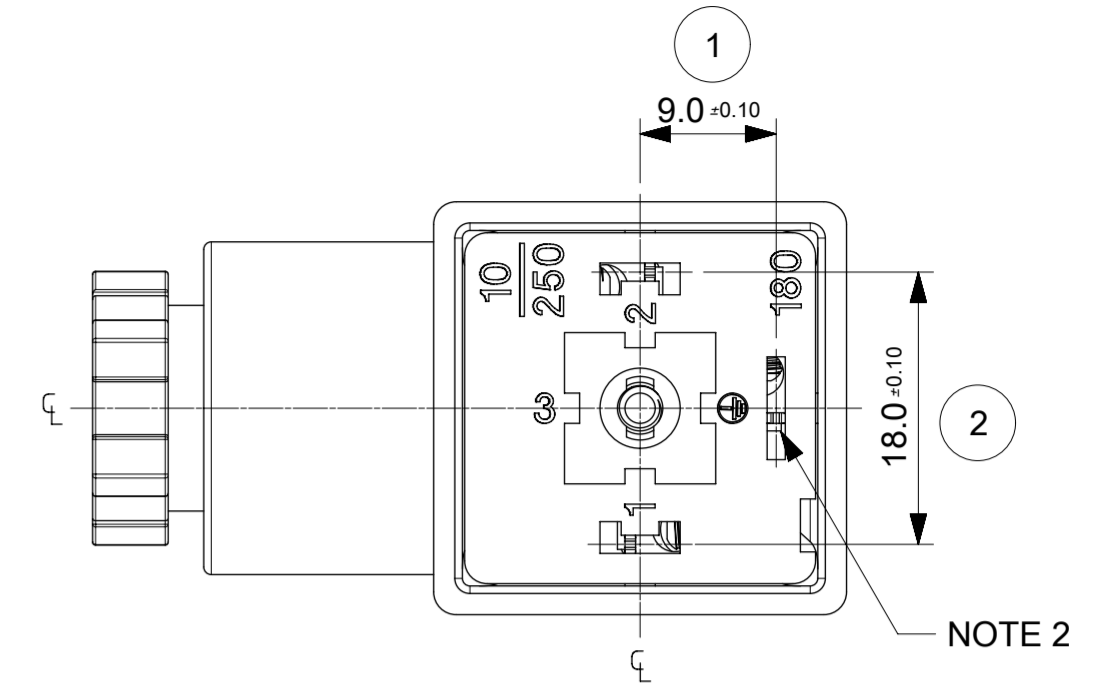
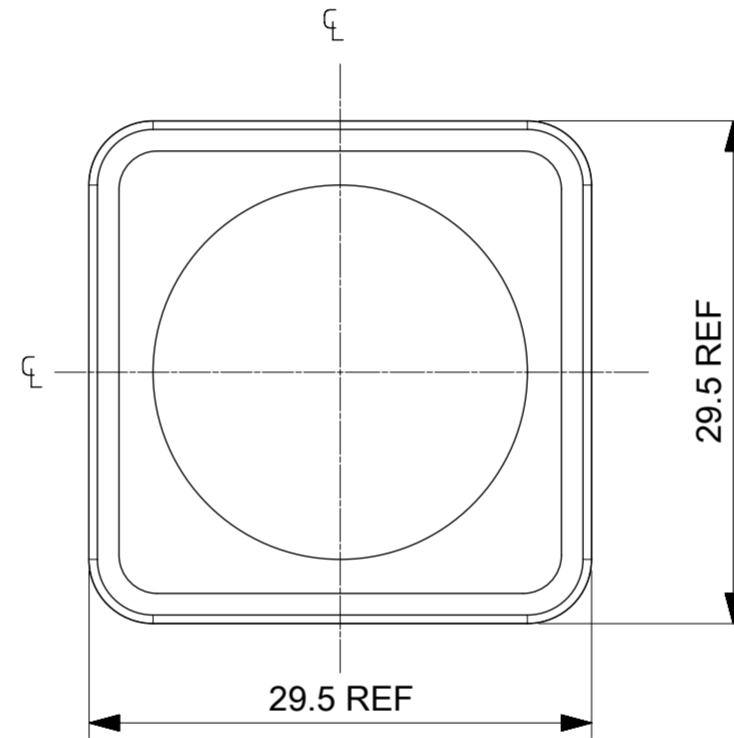
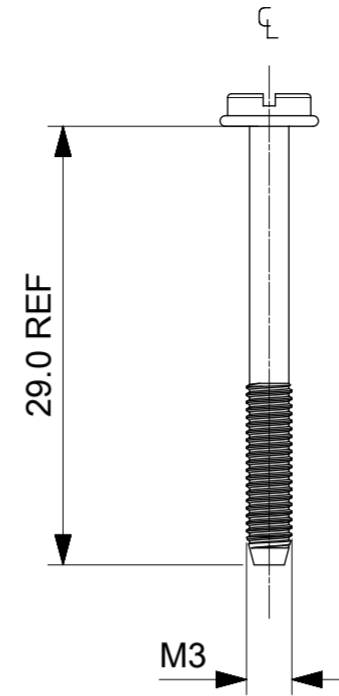
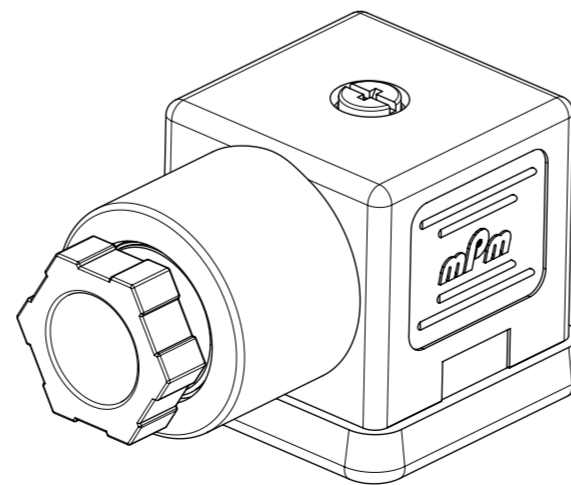
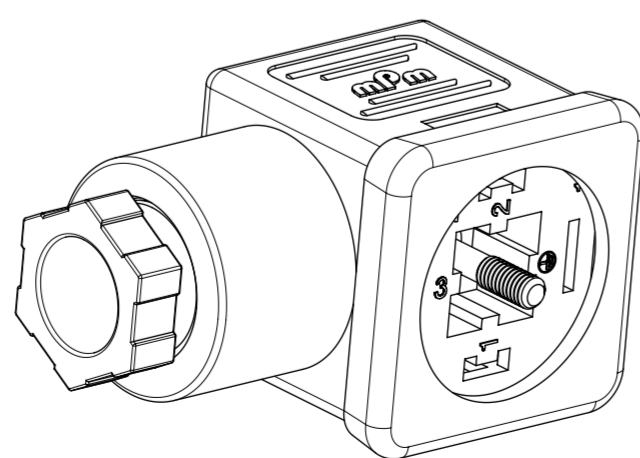
SERIES
S18= INTERNAL THREAD FORM A
POLES
2= 2 POLE & 3= 3 POLE
THREAD
09= PG9, 11= PG11, M6=M16x1.5, M0= M20x1.5, 12= 1/2" GAS 13= 1/2" NPTF
MATERIAL AND HOUSING COLOUR
G= PA6 GRAY, N= PA6 BLACK, W= PA6 BLACK V0, T= PA12 TRANSPARENT,
B= PA6 WHITE
CIRCUIT
SEE DETAILS IN CATALOGUE
VOLTAGE
SEE DETAILS IN CATALOGUE
SCREW AND GASKET

1= NBR PROFILE GASKET & SCREW
2= NBR FLAT GASKET & SCREW
3= WHITE SILICON PROFILE GASKET & SCREW
4= WHITE SILICON FLAT GASKET & SCREW
A= NBR PROFILE GASKET & SCREW +2mm
B= NBR FLAT GASKET & SCREW +2mm
P= SCREW WITH GROMMET (IP67) & NBR INTEGRATED GASKET ASSEMBLED

NON STANDARD COMPONENTS
14= PACKED IN NEUTRAL BAG
23= FULLY MOUNTED
54= WITH PIN 3 AS EARTH
65= SPECIAL GROMMET
67= NEUTRAL PACKAGING
84= TAMPO PRINTING ON DIODE
3F= 24DC W/O TAMPO PRINTING
5J= BOXES OF 100
5N= PACKED IN BOXES OF 200
6U= GI BY500-800 DIODE
AF= CENTRE SCREW MOUNTED
AG= DIODE IN4948
P7= IP67 COMPLIANT
SA= UL LISTED PART
CZ= GROMMET 4 DISCRETE WIRES



ITEM	DESCRIPTION
1	SCREW
2	COVER ASSEMBLY
3	PCB
4	INSERT ASSEMBLY
5	GASKET

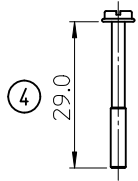
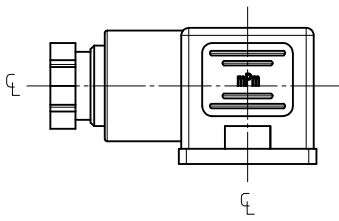
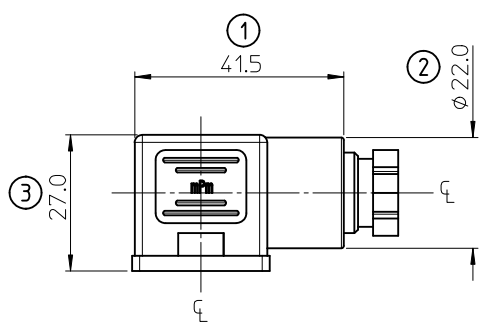


NOTES

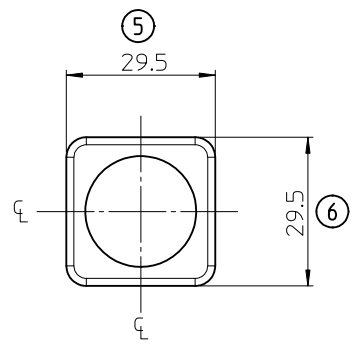
- PLEASE SEE EXCEL SHEET 1210640002_PDP FOR CURRENTLY CONFIGURED PART NUMBERS.
FOR SPECIFIC PART NUMBERS PLEASE CONTACT SALES OR CONSULT THE INTELLIGENT PART NUMBER ON THE TOP LEFT OF THIS PAGE.
- EARTH POSITION SHOWN, H12.
- FOR PACKAGING SEE PACKAGING SPEC PK-121064-S18
- PRODUCT SPEC: SEE PS-121201-001

LAST INSPECTION NUMBER 2

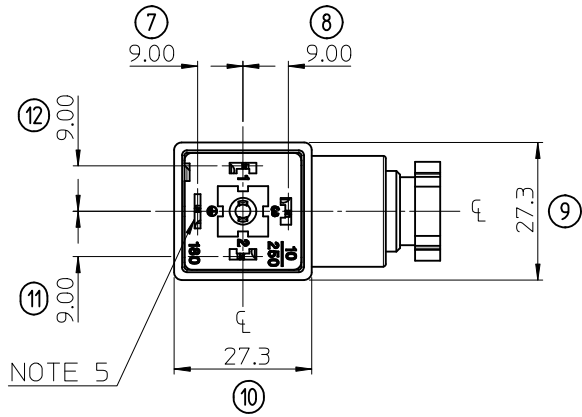
2016/12/16		2016/12/22		GENERAL TOLERANCES (UNLESS SPECIFIED)		DIMENSION UNITS		SCALE				
AE		REV		4 PLACES ±		MM		1.5:1				
108491		TCL		3 PLACES ±		DRWN BY		DATE		PRODUCT CUSTOMER DRAWING		
108491		TCL		2 PLACES ± 0.1		BCAFFREY		2016/04/11		SERIES		
108491		TCL		1 PLACE ± 0.2		CHK'D BY		DATE		MATERIAL NUMBER		
108491		TCL		0 PLACES ±		TCL		2016/12/16		CUSTOMER		
108491		TCL		DRAFT WHERE APPLICABLE MUST REMAIN WITHIN DIMENSIONS		STG		2016/04/12		GENERAL MARKET		
108491		TCL		A2		DRAWING SIZE		THIRD ANGLE PROJECTION		DOCUMENT NUMBER		
108491		TCL		A2		A2		THIRD ANGLE PROJECTION		SD-121064-002		
108491		TCL		A2		A2		THIRD ANGLE PROJECTION		DOC TYPE		
108491		TCL		A2		A2		THIRD ANGLE PROJECTION		DOC PART		
108491		TCL		A2		A2		THIRD ANGLE PROJECTION		SHEET NUMBER		
108491		TCL		A2		A2		THIRD ANGLE PROJECTION		1 OF 1		



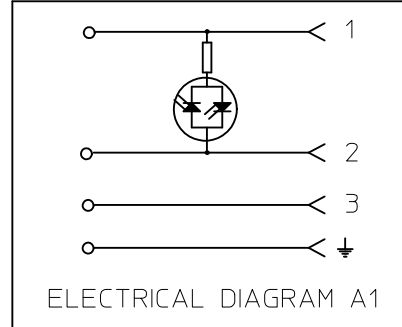
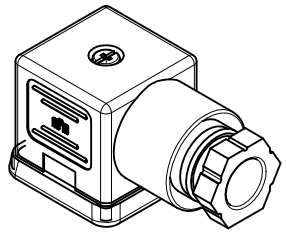
29mm M3 SCREW



G11 GASKET



NOTE 5



ELECTRICAL DIAGRAM A1

FINISHED GOOD
PART No
S183M6TA121
1210641420

PART No	DESCRIPTION	QUANTITY
1211310713	S18 COVER ASSEMBLY, M16x1.5, TRANSPARENT, H12	100
1211330911	S183 INSERT WITH A1 CIRCUIT, 24V, RED LED	100
1211290001	BAG OF 100 SCREWS	1
1211290080	BAG OF 100 GASKETS	1

- NOTES:
1. PRODUCT SPEC: PS-121201-001
 2. PACKAGING: STANDARD BOX 1211160003, FIVE STANDARD BOXES INTO A BIGGER BOX 1211160004
 3. SPQ: 100, MOQ: 100
 4. LABELLING: MOLEX STANDARD LABEL
 5. EARTH POSITION: H12
 6. PARTS SHOULD BE BULK PACK MOUNTED

LAST INSPECTION NUMBER USED: 12

ORIGINAL RELEASE EC NO: WEU2011-0429 DRW:DSHEA 2011/02/22 CHKD:DMAHER 2011/02/22 APPR:EFOLAN 2011/04/04	QUALITY SYMBOLS 	GENERAL TOLERANCES (UNLESS SPECIFIED)		DIMENSION STYLE MM ONLY	SCALE 1:1	DESIGN UNITS METRIC	THIRD ANGLE PROJECTION														
		<table border="1"> <thead> <tr> <th></th> <th>mm</th> <th>INCH</th> </tr> </thead> <tbody> <tr> <td>4 PLACES</td> <td>± ---</td> <td>± ---</td> </tr> <tr> <td>3 PLACES</td> <td>± ---</td> <td>± ---</td> </tr> <tr> <td>2 PLACES</td> <td>± 0.10</td> <td>± ---</td> </tr> <tr> <td>1 PLACE</td> <td>± 0.2</td> <td>± ---</td> </tr> </tbody> </table>		mm	INCH	4 PLACES	± ---	± ---	3 PLACES	± ---	± ---	2 PLACES	± 0.10	± ---	1 PLACE	± 0.2	± ---	DRAWN BY DSHEA	DATE 2011/02/22	TITLE S183 SERIES FIELD ATTACHABLE	
			mm	INCH																	
		4 PLACES	± ---	± ---																	
3 PLACES	± ---	± ---																			
2 PLACES	± 0.10	± ---																			
1 PLACE	± 0.2	± ---																			
CHECKED BY DMAHER	DATE 2011/02/22	APPROVED BY EFOLAN		DATE 2011/04/04	MOLEX INCORPORATED																
MATERIAL NO. SEE TABLE	DRAFT WHERE APPLICABLE MUST REMAIN WITHIN DIMENSIONS		SIZE A3	DOCUMENT NO. SD-121064-420	SHEET NO. 1 OF 1	THIS DRAWING CONTAINS INFORMATION THAT IS PROPRIETARY TO MOLEX INCORPORATED AND SHOULD NOT BE USED WITHOUT WRITTEN PERMISSION															