

PART NUMBER	REV	FIRST USED	POWER UNIT	FEED TYPE	DESCRIPTION
1855265-1	A	122500-1	LEADMAKER	POST FEED	CUTS CARRIER
1855265-2	A	565435-5	BENCH MODEL K	PRE FEED	CUTS CARRIER
1855265-3	A	354500-1	BENCH MODEL G	PRE FEED	CUTS CARRIER
1855265-6	A	122500-1	LEADMAKER	POST FEED	CONTINUOUS CARRIER
7-1855265-7	A	-	-	-	SPARE PARTS

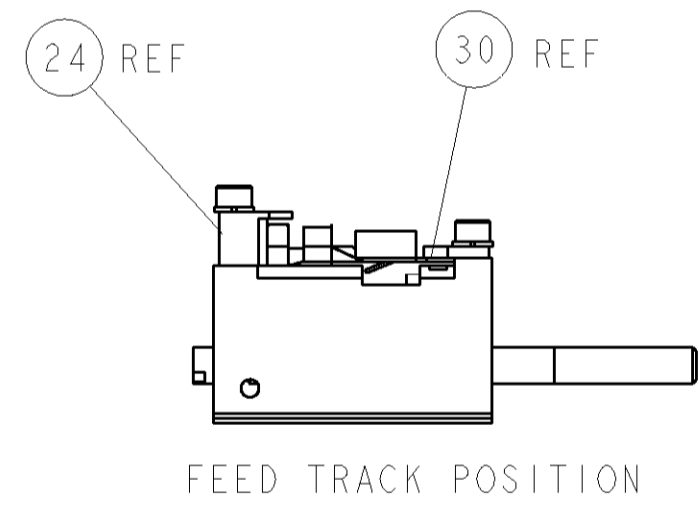
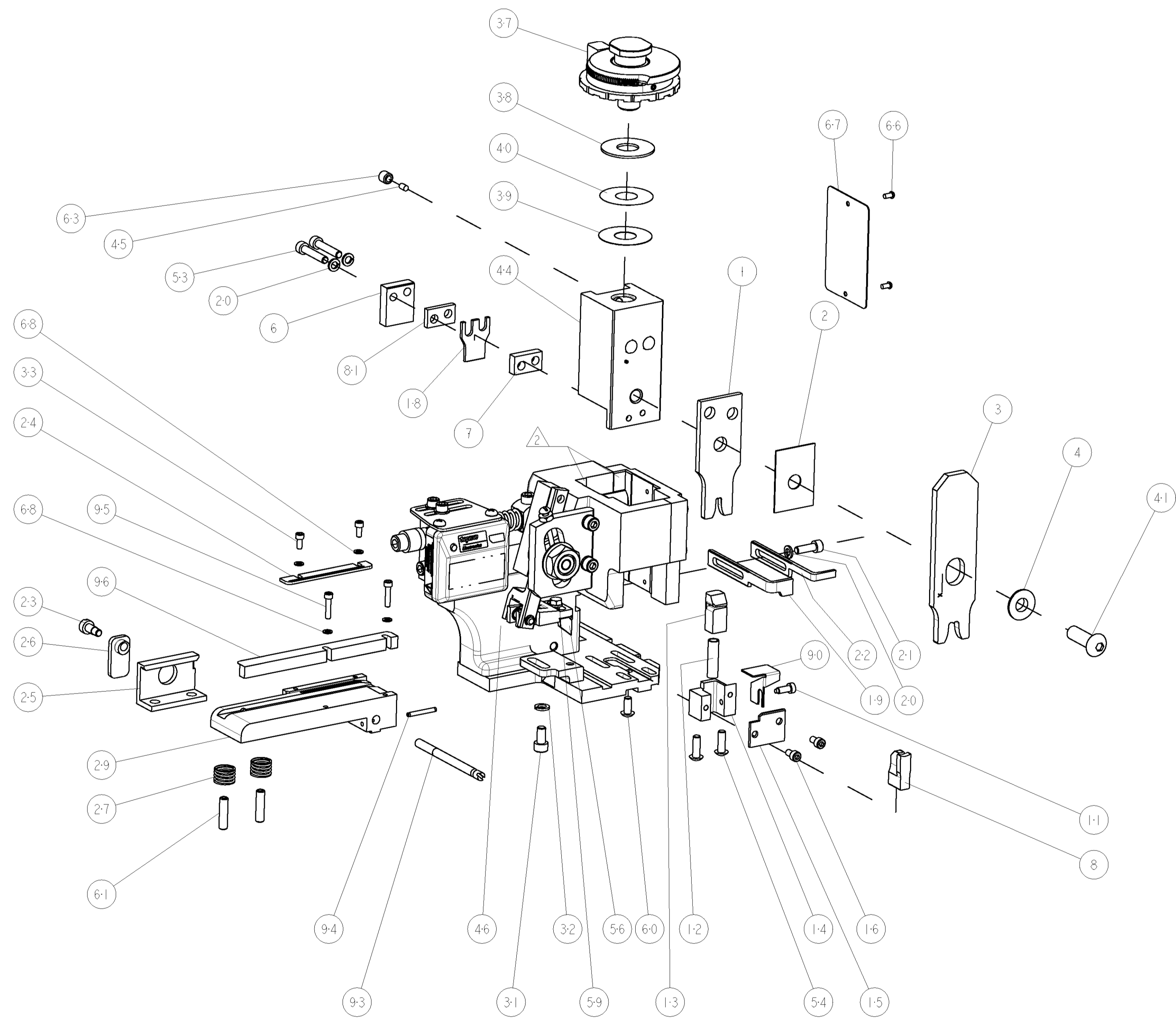


TYCO PN		MFR PN	PACKARD TERMINAL - TYCO CRIMP SPECS		REF SETTING
1949344-1	-	12010601	CRIMP HEIGHT	WIRE SIZE	A4
-	-	-	2.46±0.05mm [.097±.002]	(2) 2mm2	
-	-	-	2.21±0.05mm [.087±.002]	(1) 2mm2+(1) 1mm2	C2
-	-	-	1.93±0.05mm [.076±.002]	(1) 1mm2+(1) 0.8mm2	E3
-	-	-	1.88±0.05mm [.074±.002]	(2) 0.8mm2	E9
CRIMP	SIZE	TYPE	RANGE		
-	-	-	WIRE .140 [3.56mm]	F	0.8mm-2.0mm
-	-	-	INSUL .280 [7.11mm]	F	∅.140 MAX
WIRE STRIP LENGTH	TERM APPL SPEC	FEED	APPLICATOR INSTRUCTIONS		SET UP GAGE
3.56mm-4.75mm	NONE	.800	408-8040		458637-1

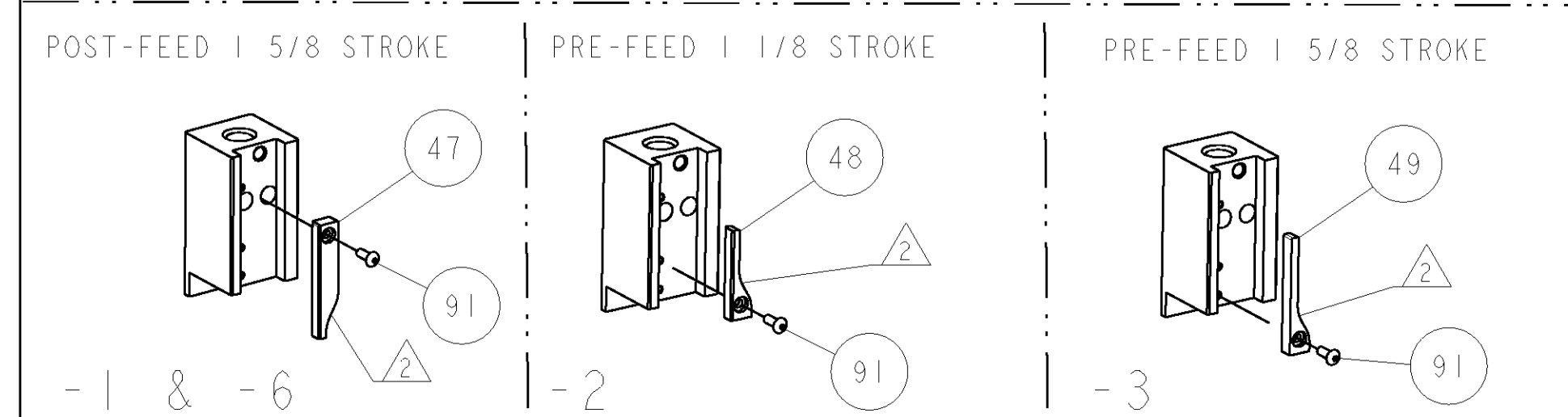
LOC	DIST	P	LTR	DESCRIPTION	DATE	DWN	APVD
A	66			RELEASED	27APR2007	BH	BH

- △ RECOMMENDED SPARE PARTS
- △ GREASE LIGHTLY
- △ GUARD MUST BE IN PLACE WHEN OPERATING APPLICATOR IN A BENCH MACHINE
- △ CUT TO LENGTH AT ASSEMBLY.

*** WARNING**
ON INSTALLATION, SET WIRE DISC TO LARGEST WIRE SIZE SETTING. USE OF SETTINGS BELOW MIN. REQUIRED CRIMP HEIGHT SETTING WILL CAUSE DAMAGE TO CRIMP TOOLING.



QTY	REF	DESCRIPTION	ITEM NO
1	REF	GUARD WINDOW	116
1	REF	INSERT, GUARD	115
1	1	GUIDE, FRONT STRIP	96
2	2	SCR, SKT HD CAP 4-40 X .500	95
1	1	PIN, SLOTTED SPRING .094 X .750	94
1	1	ADJUSTMENT SCREW	93
1	1	SCR, BTN SKT HD CAP 6-32 X .375	91
1	1	GUARD, REAR CHIP	90
1	1	SPACER	81
1	1	SF APPL INST 408-8040	72
1	1	GENERAL INSTRUCTION PKG	71
4	4	WASHER, SPRG LOCK, REG NO 4	68
1	1	PLATE, IDENTIFICATION	67
2	2	SCREW, DRIVE	66
1	1	SCR, SET, SELF LOCKING 1/4-20 X .250	63
2	2	SCR, SET, CUP POINT 10-32 X .750	61
1	1	SCR, BHSC, SELF-LOCKING, 8-32 X .375	60
1	1	SCREW, MACH, HEX HD, 8-32 X .312	59
1	1	FEED PAWL	56
2	2	SCR, BTN SKT HD CAP 8-32 X .500	54
2	2	SCR, SKT HD CAP 8-32 X .875	53
1	1	CAM, PRE FEED, 1 5/8	49
1	1	CAM, PRE FEED, 1 1/8	48
1	1	CAM, POST FEED, 1 5/8	47
1	1	APPL. BASIC SUB ASSY (SIDE WISE MOCA)	46
1	1	PLUG, NYLON	45
1	1	RAM, SIDE FEED	44
1	1	SCR, BTN SKT HD CAP 5/16-24 X 1.00	41
1	1	SHIM	40
1	1	SHIM SUB-ASSY	39
1	1	SHIM	38
1	1	FINE ADJUST HEAD ASSEMBLY	37
2	2	SCR, SKT HD CAP 4-40 X .250	33
1	1	WASHER, SPRG LOCK, REG NO 10	32
1	1	SCR, SKT HD CAP 10-32 X .375	31
1	1	PLATE, REAR STRIP GUIDE	29
2	2	SPRING, COMPRESSION	27
1	1	LEVER, DRAG RELEASE	26
1	1	DRAG, TERMINAL	25
1	1	FRONT STRIP GUIDE	24
1	1	SCR, SHLD, SLOT HD, 3/16 DIA	23
1	1	STRIPPER	22
1	1	SCR, SKT HD CAP 8-32 X .500	21
4	4	WASHER, SPRG LOCK, REG NO 8	20
1	1	STRIPPER	19
1	1	HOLD DOWN, TERMINAL	18
2	2	SCR, SKT HD CAP 6-32 X .250	16
1	1	SHEAR PLATE, REAR	15
1	1	SHEAR HOLDER, REAR	14
1	1	FLOATING SHEAR, REAR	13
1	1	SPRING, COMPRESSION	12
1	1	STOP, SHEAR	11
1	1	ANVIL, COMBINATION	8
1	1	SPACER	7
1	1	DEPRESSOR SHEAR, REAR	6
1	1	BLOCK, FL CRIMPER SPACER	4
1	1	CRIMPER, INSULATION PREMIUM	3
1	1	SPACER, CRIMPER	2
1	1	CRIMPER, WIRE PREMIUM	1



DIMENSIONS: INCHES		TOLERANCES UNLESS OTHERWISE SPECIFIED:		DWG: B. HIGMAN 25MAR2007		APVD: B. HIGMAN 25MAR2007		NAME: T. BENCHOFF		PRODUCT SPEC: -		APPLICATION SPEC: -		MATERIAL: -		FINISH: -		WEIGHT: -		CUSTOMER DRAWING: -					
0 PLC	±.001	1 PLC	±.001	2 PLC	±.001	3 PLC	±.001	4 PLC	±.001	ANGLES	±.001	SIZE	A1	CAGE CODE	00779	DRAWING NO	1855265	SCALE	3:5	SHEET	1	OF	1	REV	A

CUSTOMER VIEWABLE ASSEMBLY