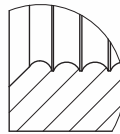
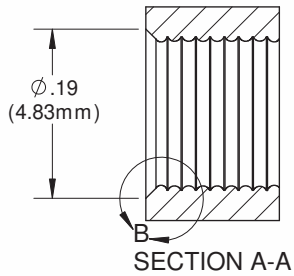
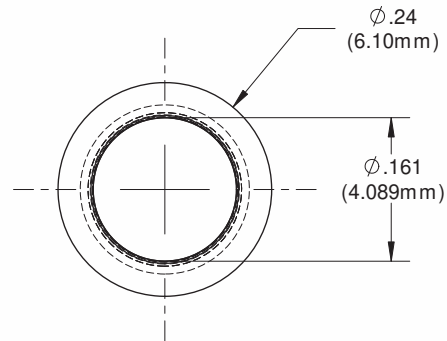
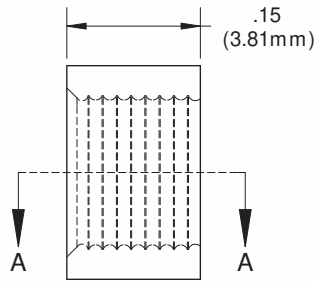


NOTES:
 1) FINISH: Part shall have a smooth appearance, min. 600 surface finish, with no gates and all flash removed
 2) U.S. & Foreign Pat. Issued and Pend.

REVISIONS				
ECN #	REV	DESCRIPTION	DATE	INITIALS
	N/A	INITIAL RELEASE	10/25/85	JS
	001	REVISED PER ECR111009AZD1	2/8/10	KH



DETAIL B
 SCALE 12 : 1



ISOMETRIC VIEW
 SCALE 4:1

<small>UNLESS OTHERWISE SPECIFIED DIMENSIONS ARE IN INCHES.</small> ANGLES DECIMALS $\pm 1^\circ$ X $\pm .020$ FINISH .XX $\pm .010$.XXX $\pm .005$ BREAK ALL CORNERS AND SHARP EDGES .250 MAX	MATERIAL	VISUAL COMMUNICATIONS COMPANY 190 Bosstick Boulevard, Suite 101 San Marcos, CA 92069 USA Phone (760) 560-1300 Fax (760) 560-1301 email vccsales@vcclife.com		
	Polypropylene UL 94-HB			
<small>THIRD ANGLE PROJECTION</small> <small>PROPRIETARY AND CONFIDENTIAL</small> <small>THE INFORMATION CONTAINED IN THIS DRAWING IS THE SOLE PROPERTY OF VISUAL COMMUNICATIONS COMPANY, INC. ALL RIGHTS RESERVED. NO PART OF THIS WHOLE WITHOUT THE WRITTEN PERMISSION OF VISUAL COMMUNICATIONS COMPANY, INC. IS PROHIBITED.</small>	FINISH	TITLE:		
	SEE NOTES	CLIPLITE RNG 165		
	APPROVALS	DATE	SIZE	DWG. NO.
	DRAWN K.HOWARD	2/8/10	A	RNG 165
	CHECKED DPZ	2/22/10	REV	001
	DO NOT SCALE DRAWING		SCALE: 6:1	SHEET 1 OF 1

5

4

3

2

1