



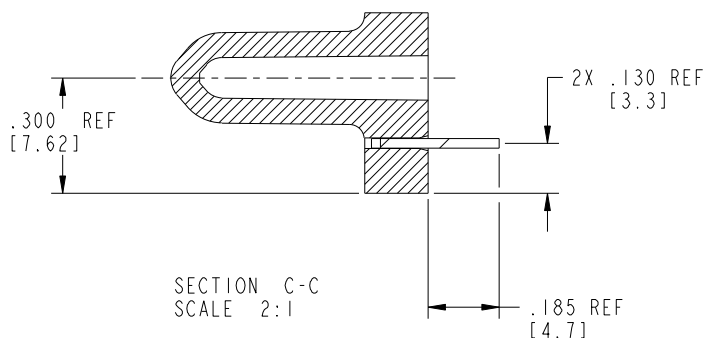
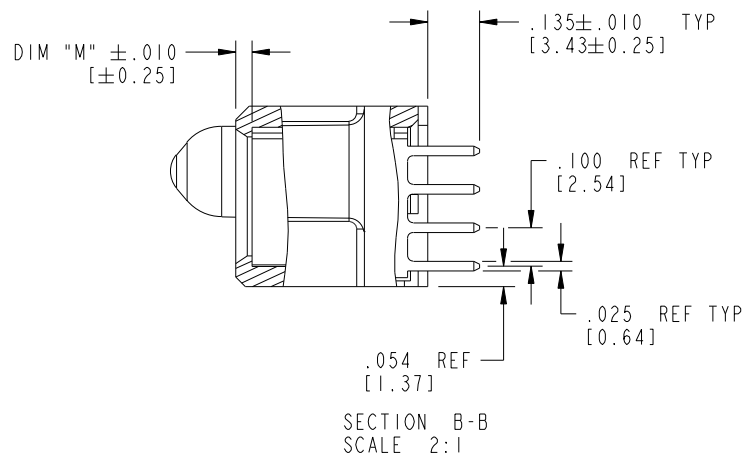
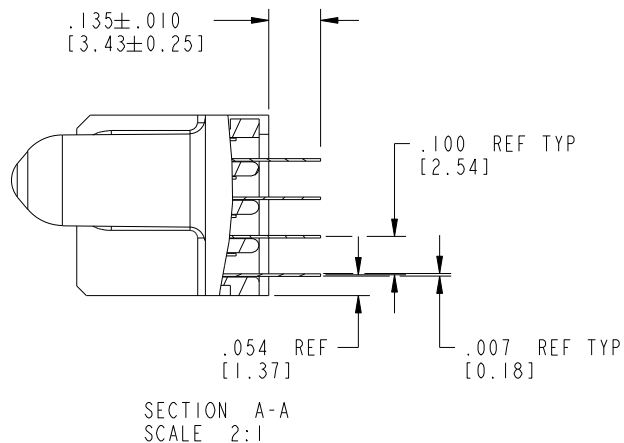
Tous droits strictement réservés. Reproduction ou communication a des tiers interdite sous quelque forme que ce soit sans autorisation écrite du propriétaire. Propriété de c FCI. Droits de reproduction FCI.

All rights strictly reserved. Reproduction or issue to third parties in any form whatever is not permitted without written authority from the proprietor. Property of FCI. Copyright FCI.



PRODUCT NUMBER

51940-135\_\_  
NOTE ③



mat'l code		SEE NOTE 2		tolerances unless otherwise specified		CUSTOMER		FCI	
lfr	ecn no.	dr	date	linear	.XX±.01/0.X±0.3	COPY		www.fciconnect.com	
B				projection	.XXY±.005/0.XX±0.13	INCH/MM		title	
				angles	.XXX±.0020/0.XXX±0.051	1:1		40S+2P	
				dr	0°±2°	scale		VERTICAL SOLDER RECEPT	
				enr	STEVEN WANG 04/04/05	A		product family	
				chr	STEVEN WANG 04/04/05	51940-135		PwrBlade	
				appd	VICTOR LIN 04/04/05	A		code	
					JOSEPH HSIA 04/04/05	A		213	
sheet index	revision sheet							sheet	
								2 of 4	

Pro/E

PDM: Rev: B

STATUS: Released

Printed: Dec 20, 2010

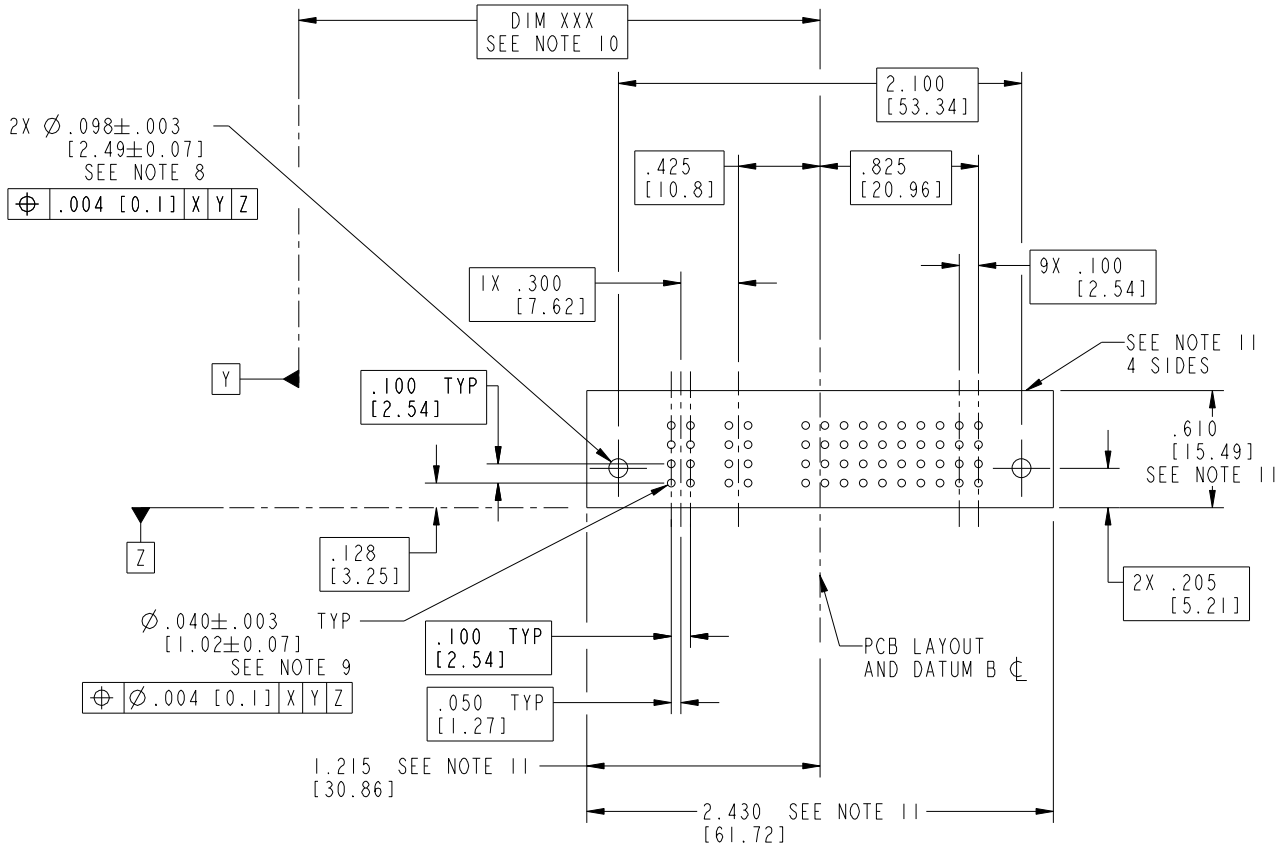
Tous droits strictement réservés. Reproduction ou communication a des tiers interdite sous quelque forme que ce soit sans autorisation écrite du propriétaire. Propriété de c FCI. Droits de reproduction FCI.

All rights strictly reserved. Reproduction or issue to third parties in any form whatever is not permitted without written authority from the proprietor. Property of FCI. Copyright FCI.



PRODUCT NUMBER

51940-135\_\_  
NOTE (3)



RECOMMENDED PCB LAYOUT

mat'l code		SEE NOTE 2		tolerances unless otherwise specified		CUSTOMER		FCI	
lir	ecn no.	dr	date	linear	.XX±.01/0.X±0.3	COPY		www.fciconnect.com	
B				projection	.XXX±.005/0.XX±0.13	projection		title 40S+2P	
				angles	.XXX±.0020/0.XXX±0.051	INCH/MM		VERTICAL SOLDER RECEPT	
				dr	0°±2°	scale		product family PwrBlade	
				engr	STEVEN WANG 04/04/05	1:1		code 213	
				chr	STEVEN WANG 04/04/05			size dwg no	
				appd	VICTOR LIN 04/04/05			A 51940-135	
					JOSEPH HSIA 04/04/05			sheet 3 of 4	
sheet index	revision sheet								

cage code 22556

Pro/E

PDM: Rev:B

STATUS: Released

Printed: Dec 20, 2010



PRODUCT NUMBER  
51940-135\_\_  
NOTE ③

NOTES:

1. DIMENSIONS AND TOLERANCES ARE IN ACCORDANCE WITH ASME Y14.5M, 1994 UNLESS OTHERWISE SPECIFIED.

CONNECTOR NOTES:

② HOUSING MATERIAL: UL 94 V-0 GLASS FILLED HIGH-TEMP THERMOPLASTIC  
POWER CONTACT MATERIAL: COPPER ALLOY  
SIGNAL PIN MATERIAL: COPPER ALLOY

ⓑ ③. PLATING SPEC.  
51940-135, 51940-135LF PLATING SPEC. WAS SHOWN IN THE PRINT OF 10064183.

④ MANUFACTURER'S NAME, P/N, AND DATE CODE TO APPEAR ON THIS SURFACE.

5. PRODUCT SPECIFICATION GS-12-149.  
APPLICATION SPECIFICATION BUS-20-067.

6. PACKAGED IN TRAYS.

PCB NOTES:

7. ALL HOLE DIAMETERS ARE FINISHED HOLE SIZE.

⑧ MOUNTING HOLES, WHERE APPLICABLE, ARE UNPLATED.

⑨  $\varnothing .0453 \pm .0010$  [1.151  $\pm$  0.025] DRILLED HOLES PLATED WITH .0003 [0.008] MIN SnPb OVER .001 [0.03] TO .003 [0.08] Cu PLATING TO ACHIEVE  $\varnothing .040 \pm .003$  [1.02  $\pm$  .07] HOLE.

⑩ "DIM XXX" TO BE DETERMINED BY THE CUSTOMER.

⑪ CONNECTOR KEEP-OUT ZONE.

12. A ⓑ SYMBOL WILL BE NEXT TO ANY DIMENSION, VIEW, OR NOTE WHICH HAS BEEN MODIFIED WITH THE CURRENT DRAWING REVISION.

mat'l code				SEE NOTE 2		tolerances unless otherwise specified		CUSTOMER		FCI	
ltr	ecn no.	dr	date	linear	.XX±.01/0.X±0.3	projection		COPY		www.fciconnect.com	
B					.XXY±.005/0.XX±0.13	⊕ ↗		title		40S+2P	
				angles	.XXX±.0020/0.XXX±0.051	↖ ⊕		VERTICAL SOLDER RECEPT		product family	
				dr	0°±2°	INCH/MM		PwrBlade		code	
				engr	STEVEN WANG 04/04/05	← →		size		213	
				chr	STEVEN WANG 04/04/05	scale		A		sheet	
				appd	VICTOR LIN 04/04/05	1:1		51940-135		4 of 4	
					JOSEPH HSIA 04/04/05						
sheet index	revision sheet										

A

A

B

B