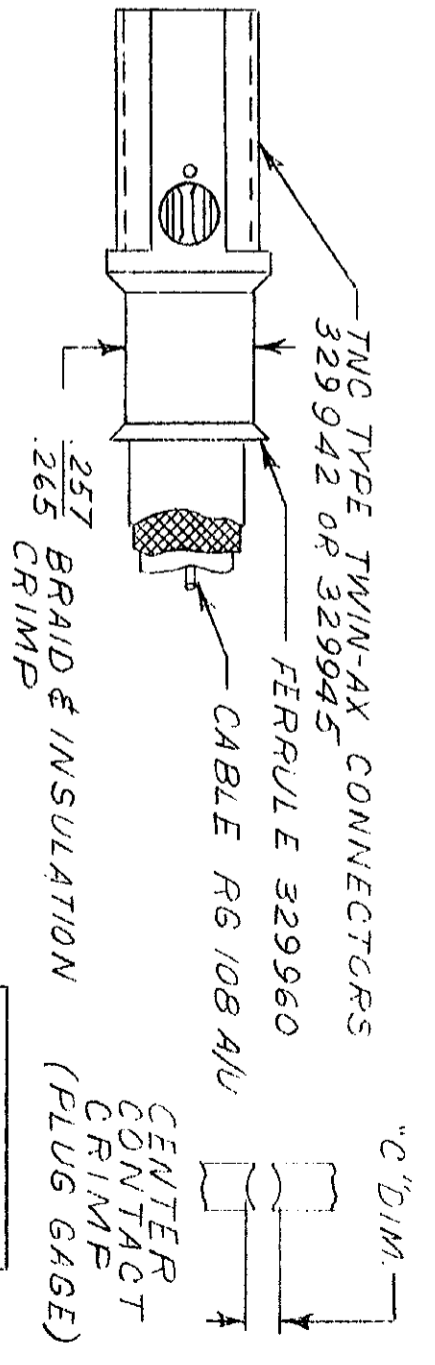
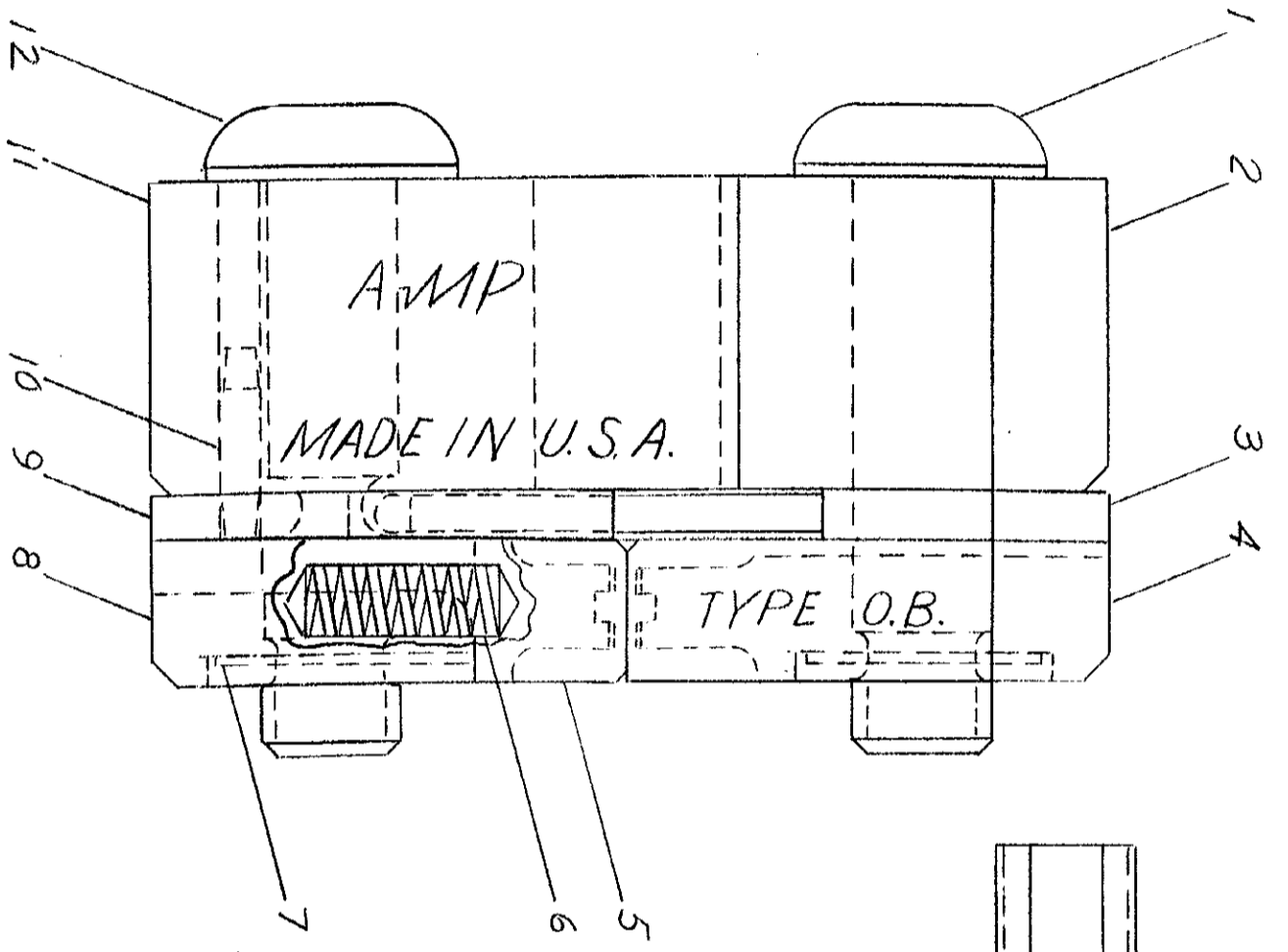
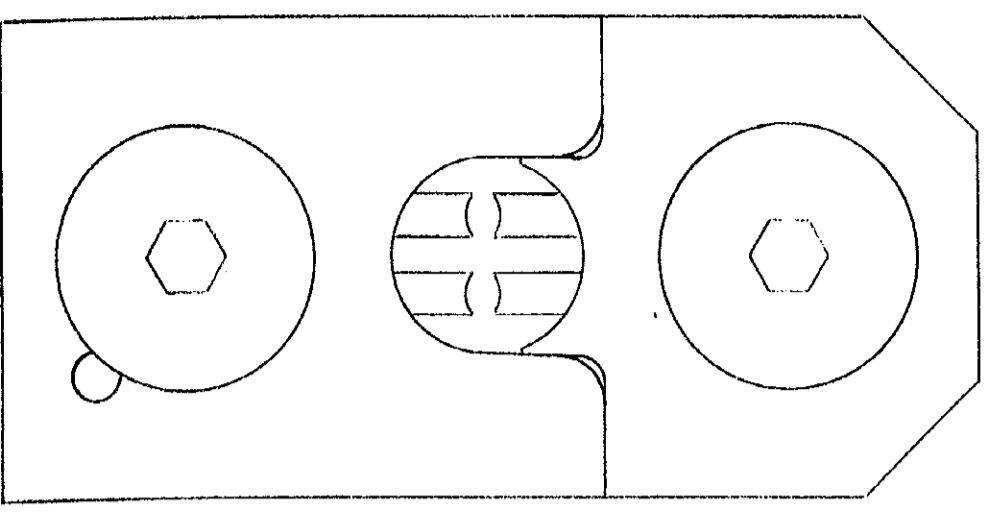


PRINT DIST

DIMENSIONS IN INCHES. DO NOT SCALE PRINT



METHOD OF GAGING CRIMP DIMENSIONS

THE CRIMP DIMENSIONS APPLY ONLY TO THE ABOVE COMBINATIONS ON A CRIMPED PRODUCT

"C" DIM.	
GO	NO GO
.040	.044

SUPERSEDED BY U.S. 1933-3

1	4-306131-4	SCREW-SPECIAL	12
1	1-306540-8	INDENTER-INSULATION	11
1	21028-2	PIN-SLOTTED	10
1	9-305832-8	SPACER-SPECIAL	9
1	306543-3	BARREL-BLOCK	8
2	1-21046-3	RING-RETAINING	7
2	305182	SPRING	6
1	306545	INSERT-BARREL-LOWER	5
1	306201	INSERT-BARREL-UPPER	4
1	2-306113-3	EJECTOR	3
1	1-306539-8	ANVIL-INSULATION	2
1	4-306131-3	SCREW-SPECIAL	1

REVISION RECORD		DR		CHK		DATE	
A	5/12/60	BY	J.S.	1833-3			
NUMBER 69410-1 DESCRIPTION DIE ASSEMBLY DR G. J. Ziegler 11-10-65 CHK [Signature] 11-10-65 MATERIAL AND FINISH WIRE RANGE - INSULATION RS-108 A/U TOLERANCE EXCEPT AS NOTED ± .015 SCALE 4-1 LOC M NO B REV A NAME DIE ASSEMBLY CLASS TYPE O.B. TWIN COAX AMP INCORPORATED HARRISBURG, PENNA. CUSTOMER COPY REFERENCE ONLY REMARKS ITEM NO. 1							