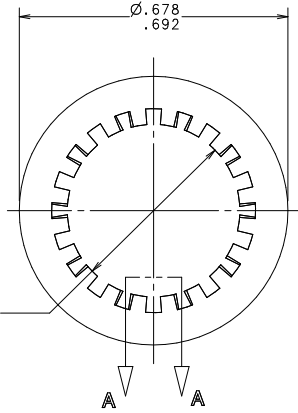
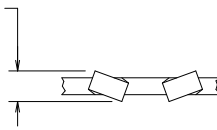


Ø .440 I.D.
.452



.030
MIN.



SECTION A-A
TOOTH DETAIL
SCALE 10=1

UNLESS OTHERWISE SPECIFIED, DIMENSIONS DO NOT INCLUDE PLATING.

CPK DENOTES CRITICAL CHARACTERISTICS.

CPK DENOTES CPK DIMENSIONS - MINIMUM CPK VALUE

DENOTES A CHARACTERISTIC THAT PROVIDES AN INDICATION OF THE TESTING TO BE USED TO DETERMINE THE MEASUREMENT TOLERANCE TO BE USED. INSPECTOR TO BE RESPONSIBLE FOR IDENTIFYING THE TESTING TO BE USED. INSPECTOR TO BE RESPONSIBLE FOR IDENTIFYING THE TESTING TO BE USED.

CPK DENOTES CP DIMENSIONS - MINIMUM CP VALUE
DIMENSIONS WITHIN THE DIMENSIONAL LIMITATIONS
SPECIFIED FOR MAXIMUM TOOL LIFE.

4							
3							
2							
1							
NO	COMPONENT NO	DESCRIPTION	QTY/M	U/M			

BILL OF MATERIAL

LTR	REVISION	MATERIAL SPEC	STEEL	FINISH	NICKEL PLATE	
					DATE	SCALE
C	38845C-REVISE & REDRAWN IN NEW STRUCTURE 12/15/97 KAM	1 9 18	KAM	11/5/97	4:1	
		2 10 19			SUPER DRW	
		3 12 20				
		4 13 21			RAW STK WT	
		5 14 23				LBS/M
		6 15 33				
		7 16 43			TOLERANCE UNLESS OTHERWISE SPECIFIED	
		8 17 53			TWO PLACE DEC ±.01	
					THREE PLACE DEC ±.005	
					ANGULAR ±1°	

TITLE

INTERNAL LOCKWASHER (7/16)



DES PLAINES, ILL INOIS 60016

HEBARD DRWS. MGR.

C

-905-041

UNCONTROLLED DOCUMENT