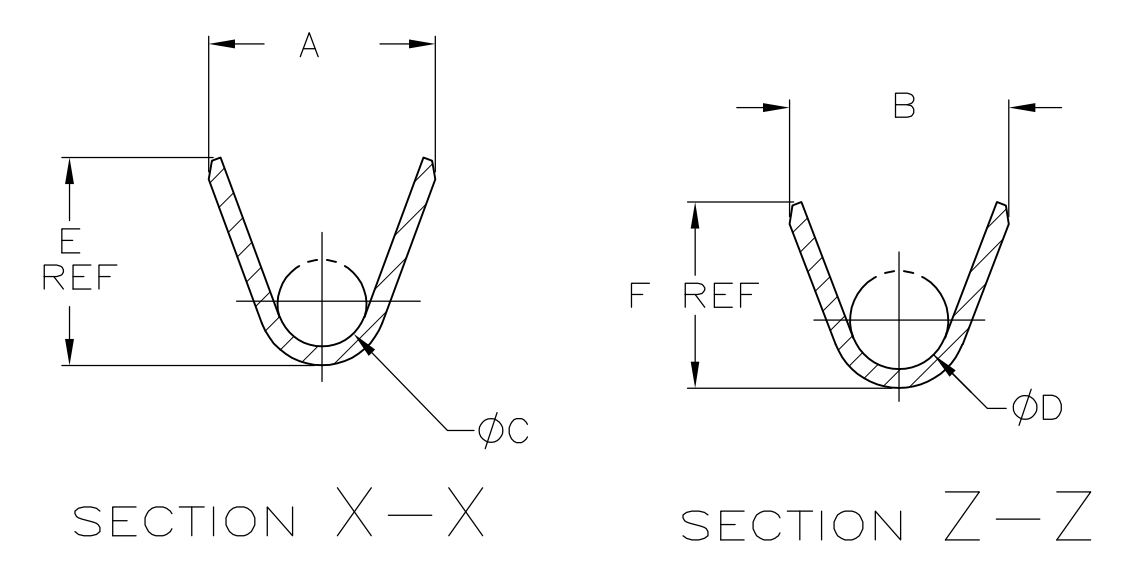
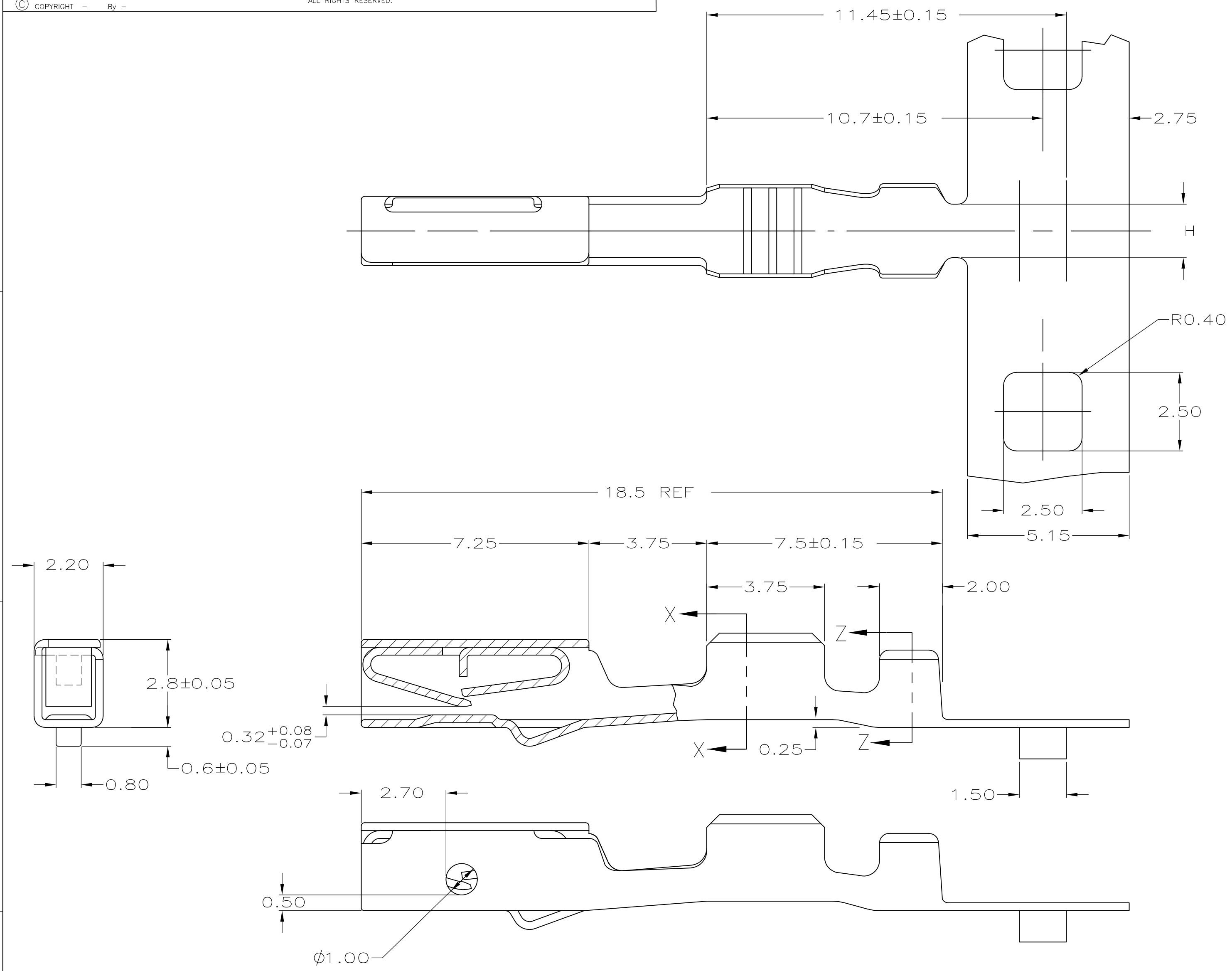


THIS DRAWING IS UNPUBLISHED. RELEASED FOR PUBLICATION  
 © COPYRIGHT - By - ALL RIGHTS RESERVED.

LOC	DIST	REVISIONS				
P	LTR	DESCRIPTION	DATE	DWN	APVD	
FX	00	C1	REVISED PER ECO-11-005030	11MAR11	RK HMR	



1 MATERIAL: 0.25 THK COPPER ALLOY, PRE-PLATED WITH 0.0008 MIN THK BRIGHT TIN.

638187-2 REELED LEFT TO RIGHT, OFF TOP, CARRIER INSIDE									638187-4
638187-1 REELED LEFT TO RIGHT, OFF TOP, CARRIER INSIDE									638187-3
1.6	1.80	2.04	1.45	0.90	2.40	2.30	0.35	22	638187-2
1.6	1.80	2.04	1.45	0.90	2.40	2.30	0.34-0.36		
1.7	2.46	2.75	1.30	1.20	2.90	3.00	0.50	18-20	638187-1
1.7	2.46	2.75	1.30	1.20	2.90	3.00	0.75		
1.7	2.46	2.75	1.30	1.20	2.90	3.00	1.00		
1.7	2.46	2.75	1.30	1.20	2.90	3.00	--		
H	F	E	D	C	B	A	METRIC WIRE SIZE	AWG	PART NUMBER

THIS DRAWING IS A CONTROLLED DOCUMENT.		DWN J MCNEAL 04-09-98	<b>STE</b> TE Connectivity	
DIMENSIONS: mm		CHK C PAUL 04-09-98		
TOLERANCES UNLESS OTHERWISE SPECIFIED:		APVD C PAUL 04-09-98	NAME RECEPTACLE CONTACT, DUAL BEAM	
0 PLC ± -		PRODUCT SPEC	SIZE A2	
1 PLC ± 0.2		APPLICATION SPEC	CAGE CODE 00779	
2 PLC ± 0.1		114-6063	DRAWING NO C=638187	
3 PLC ± -		WEIGHT	RESTRICTED TO	
4 PLC ± -		FINISH	SCALE 4:1	
ANGLES ± 5°		1	SHEET 1 OF 1	
MATERIAL		CUSTOMER DRAWING	REV C1	