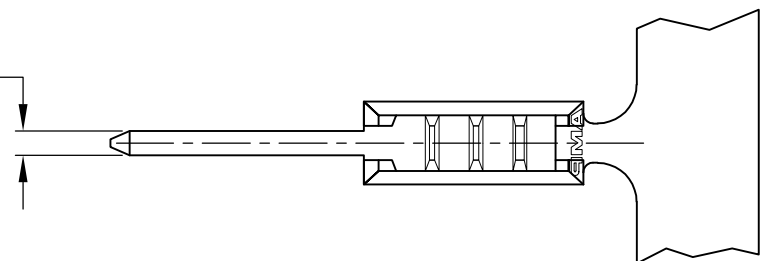
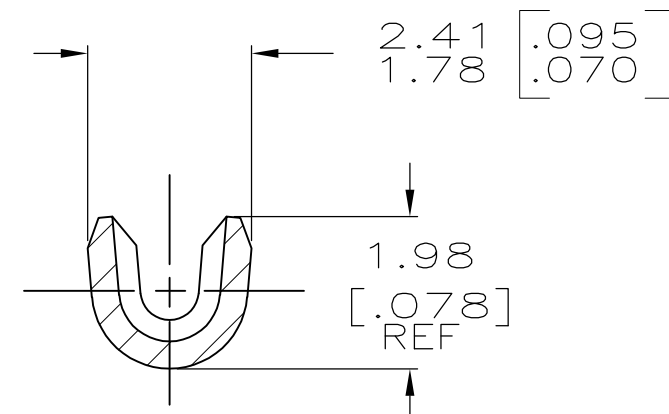
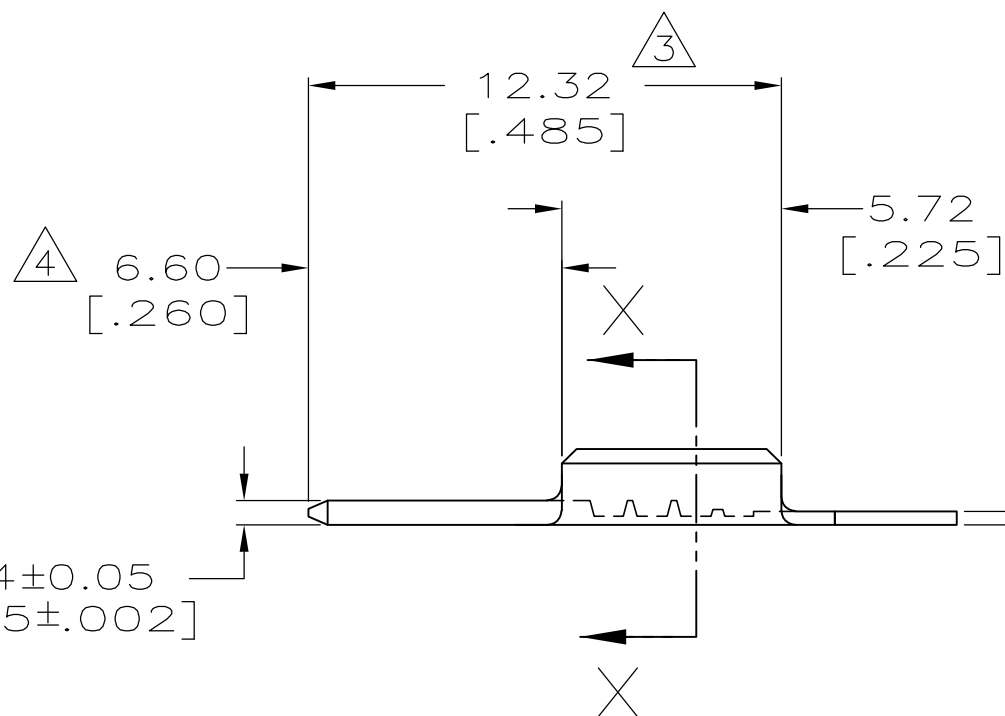


LOC	DIST	REVISIONS			
P	LTR	DESCRIPTION	DATE	DWN	APVD
AF	50	J1	REVISED PER ECR-13-008677	28MAY13	PB YHM

0.64±0.05
[.025±.002]



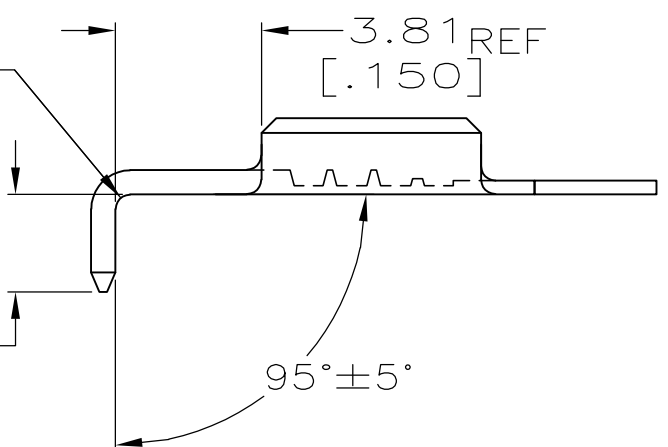
- 1 CONTINUOUS STRIP ON REELS
- 2 WIRE SIZE — TINSEL WIRE
INSULATION RANGE 0.76—0.89 [.030—.035] DIA.
- △3 GOLD PLATE OVER THIS AREA SHOWN.
- △4 GOLD FLASH THIS AREA ONLY OVER
NICKEL PLATE THE ENTIRE LENGTH.
- △5 0.002032 [.000080] MIN TIN OVER
0.00127 [.000050] MIN NICKEL.
- △6 PRELIMINARY — NOT FOR PRODUCTION



SECTION X—X
SCALE 10:1

Ⓜ1	REVERSE REEL OF -1	△5	61684-5
	REVERSE REEL OF -1	△4	61684-3
OBSOLETE	REVERSE REEL OF -1	△3	61684-2
OBSOLETE		△3	61684-1
	REMARKS	FINISH	PART NO.

R0.38
[.015]



TO BE BENT IN APPLICATOR
FOR 61684-5 ONLY

THIS DRAWING IS A CONTROLLED DOCUMENT.		DWN	JR RUTH	18JUL00	AMP Incorporated Harrisburg, PA 17105-3608								
DIMENSIONS: MM [INCHES]		CHK	MS FEHER	18JUL00									
TOLERANCES UNLESS OTHERWISE SPECIFIED:		APVD	G PORTA	18JUL00									
0 PLC ±- 1 PLC ±- 2 PLC ±0.25 [.010] 3 PLC ±- 4 PLC ±- ANGLES ±-		PRODUCT SPEC	NAME										
MATERIAL	H04 BRASS	FINISH	SEE TABLE		APPLICATION SPEC								
		WEIGHT	-		SIZE	A3	CAGE CODE	00779	DRAWING NO	C- 61684	RESTRICTED TO	-	
CUSTOMER DRAWING						SCALE	5:1	SHEET	1	OF	1	REV	J1