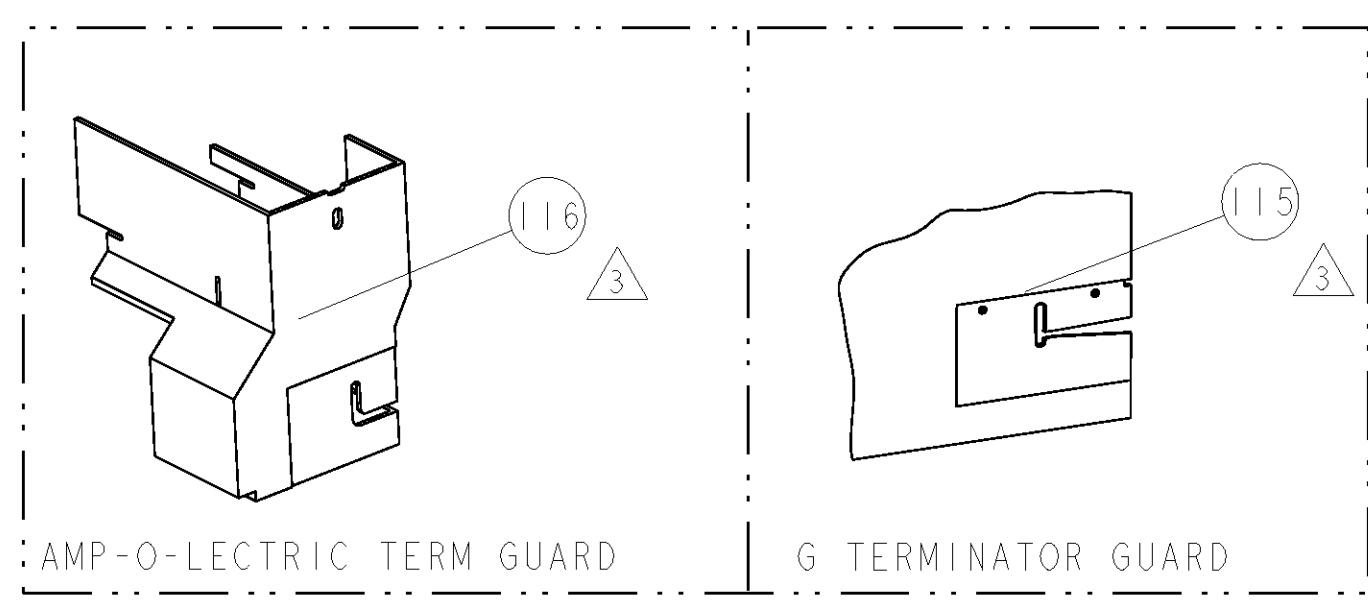


PART NUMBER	REV	FIRST USED	POWER UNIT	FEED TYPE	DESCRIPTION
1855343-1	B	122500-1	LEADMAKER	POST FEED	CUTS CARRIER
1855343-2	B	565435-5	BENCH MODEL K	PRE FEED	CUTS CARRIER
1855343-3	B	354500-1	BENCH MODEL G	PRE FEED	CUTS CARRIER
1855343-6	B	122500-1	LEADMAKER	POST FEED	CONTINUOUS CARRIER
7-1855343-7	A	-	-	-	SPARE PARTS

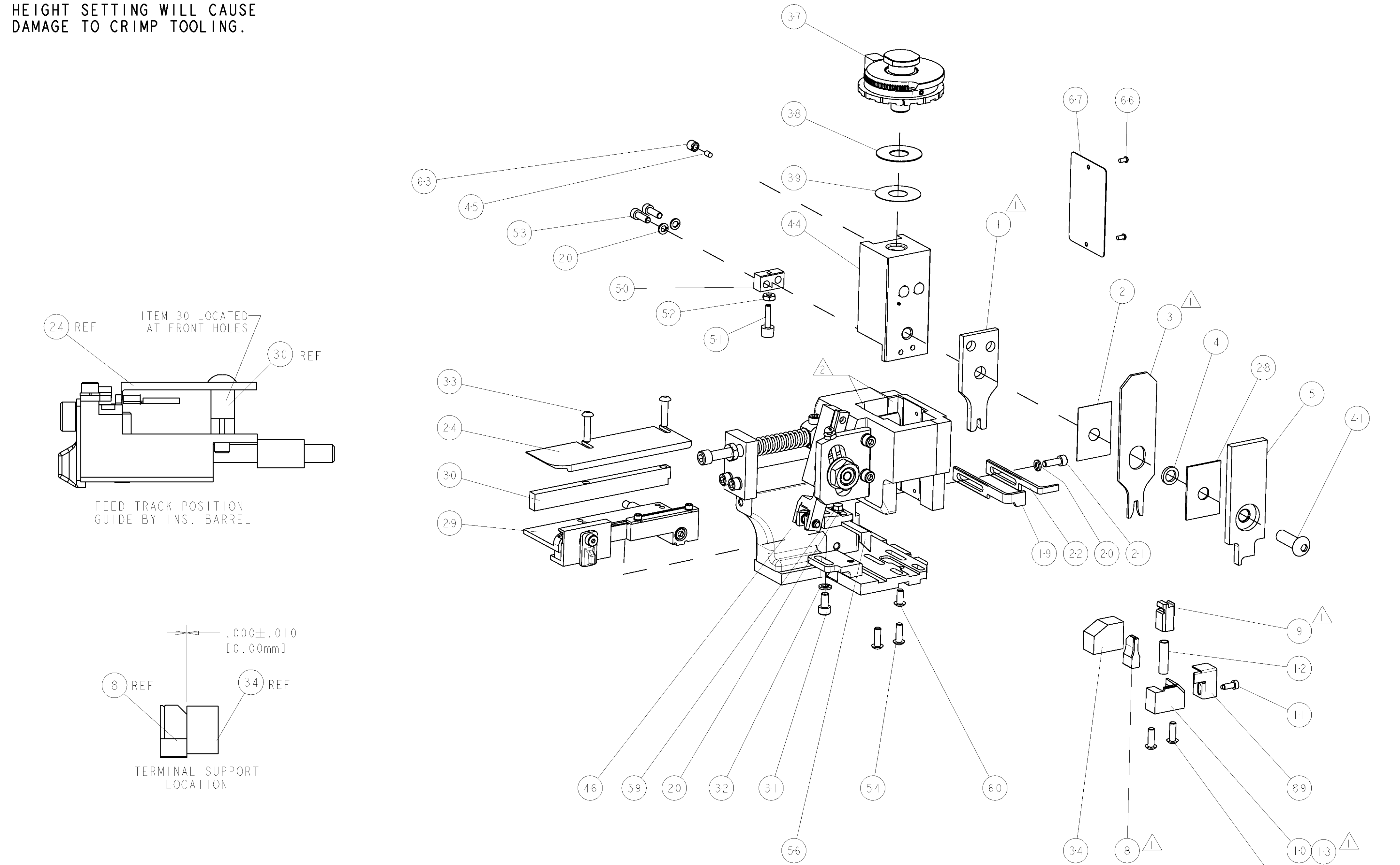


TE TERM PN		MANUF PN		ITT TERMINAL - TE CRIMP SPECS		
1572605-1	110238-1016	CRIMP HEIGHT				
1572605-2	030-2480-007	WIRE SIZE				
-	-	1.35±0.05mm [0.053±.002]	16AWG			REF SETTING
-	-	1.17±0.05mm [0.046±.002]	18AWG			D 6
-	-	1.04±0.05mm [0.041±.002]	20AWG			E 7
CRIMP		SIZE	TYPE	RANGE		
-	-	2.29mm [0.090]	F	20-16 AWG		
-	-	3.05mm [0.120]	F	2.72 MAX		
WIRE STRIP LENGTH	TERM APPL SPEC	FEED	APPLICATOR INSTRUCTIONS		SET UP GAGE	
5.46-5.87	NONE	10.16	408-8040		458637-1	

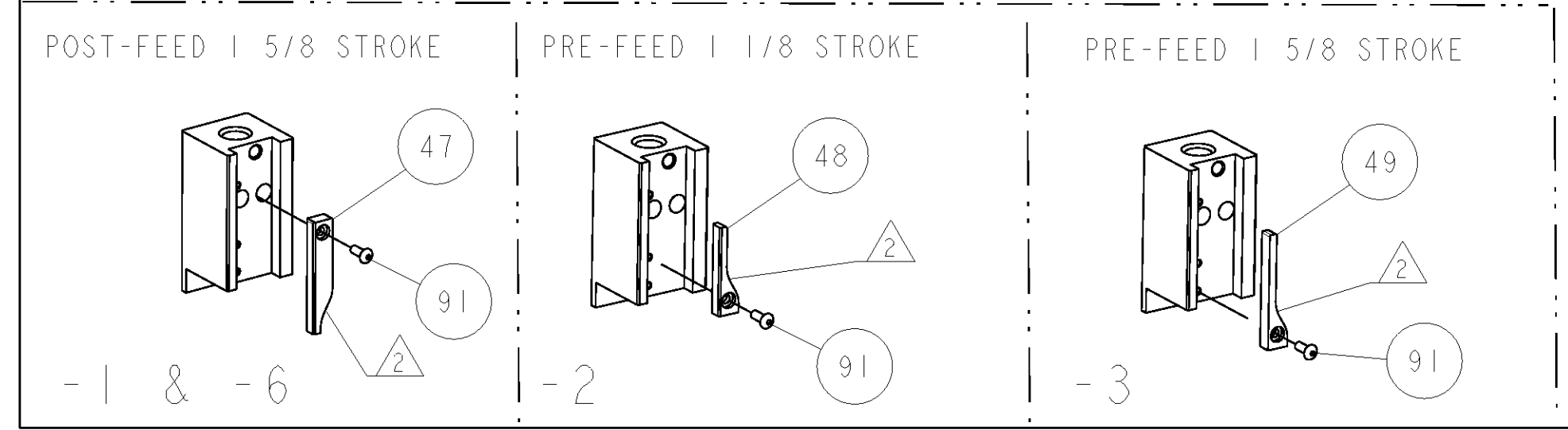
LOC	DIST	REV	DATE	BY	APPV
A	66				

- △ RECOMMENDED SPARE PARTS
- △ GREASE LIGHTLY
- △ GUARD MUST BE IN PLACE WHEN OPERATING APPLICATOR IN A BENCH MACHINE
- △ CRIMP DATA CALCULATED BY TYCO ELECTRONICS LTD.

**\* WARNING**  
 ON INSTALLATION, SET WIRE DISC TO LARGEST WIRE SIZE SETTING. USE OF SETTINGS BELOW MIN. REQUIRED CRIMP HEIGHT SETTING WILL CAUSE DAMAGE TO CRIMP TOOLING.



QTY	REF	DESCRIPTION	ITEM NO
1	3-7	GUARD WINDOW	116
1	3-8	INSERT, GUARD	115
1	1-21002-7	SCR, BTN SKT HD CAP 6-32 X .375	91
1	318563-1	GUARD, FRONT CHIP	89
1	4088040	SF APPL INST 408-8040	72
1	217238-1	GENERAL INSTRUCTION PKG	71
1	461264-5	PLATE, IDENTIFICATION	67
2	21017-2	SCREW, DRIVE	66
1	21009-2	SCR, SET, SELF LOCKING 1/4-20 X .250	63
1	22733-8	SCR, BHSC, SELF-LOCKING, 8-32 X .375	60
1	2-22603-0	SCR, HEX HD CAP 8-32 X .312	59
1	458537-2	PAWL, FEED	56
4	2-21002-2	SCR, BTN SKT HD CAP 8-32 X .500	54
2	2-21000-7	SCR, SKT HD CAP 8-32 X .500	53
1	21018-5	NUT, HEX, REG 6-32	52
1	811242-2	BUMPER, HOLD DOWN	51
1	690753-1	SPACER, TONKER	50
1	690602-6	CAM, PRE FEED, 1 1/8	49
1	690602-5	CAM, PRE FEED, 1 1/8	48
1	690501-4	CAM, POST-FEED 1 1/8	47
1	459456-1	APPL. BASIC SUB ASSY (SIDE WISE MQCA)	46
1	690191-1	PLUG, NYLON	45
1	455673-6	RAM, SIDE FEED	44
1	7-21002-9	SCR, BTN SKT HD CAP 5/16-24 X 1.00	41
1	690125-1	SHIM SUB-ASSY	39
1	1-469367-2	SHIM	38
1	879103-3	FINE ADJUST HEAD ASSEMBLY	37
1	690786-3	TERMINAL SUPPORT	34
2	2-21002-4	SCR, BTN SKT HD CAP 8-32 X .750	33
1	21024-5	WASHER, SPRG LOCK, REG NO 10	32
1	3-21000-4	SCR, SKT HD CAP 10-32 X .375	31
1	1320908-4	SPACER, STRIP GUIDE	30
1	1633091-1	ASSEMBLY, STRIP GUIDE	29
1	1-455888-0	SPACER, CRIMPER	28
1	1320928-5	PLATE, STRIP GUIDE	24
1	690472-2	STRIPPER	22
1	2-21000-7	SCR, SKT HD CAP 8-32 X .500	21
4	21024-4	WASHER, SPRG LOCK, REG NO 8	20
1	691353-1	STRIPPER	19
1	679625-1	SHEAR HOLDER, FRONT (NO CUT)	13
1	3-22280-3	SPRING, COMPRESSION	12
1	690461-1	STOP, SHEAR	11
1	690459-1	SHEAR HOLDER, FRONT	10
1	454276-1	FLOATING SHEAR, FRONT	9
1	5-662187-7	ANVIL, COMBINATION .090	8
-	-	-	7
-	-	-	6
1	1-455889-4	DEPRESSOR, SHEAR	5
1	238011-7	BLOCK, CRIMPER SPACER	4
1	1213077-2	CRIMPER, INSULATION PREMIUM	3
1	455888-3	SPACER, CRIMPER	2
1	6-456406-2	CRIMPER, WIRE PREMIUM	1



DIMENSIONS:	TOLERANCES UNLESS OTHERWISE SPECIFIED:	DATE	BY	APPV
INCHES	1 PLC ±.01 2 PLC ±.01 3 PLC ±.001 4 PLC ±.0001	01OCT2007	L LOFTHOUSE	
MATERIAL	FINISH	Tyco Electronics Harrisburg, PA 17105-3608		
CUSTOMER ACCESSIBLE PRODUCTION DRAWING		SCALE	SHEET	REV
		3:5	1	B