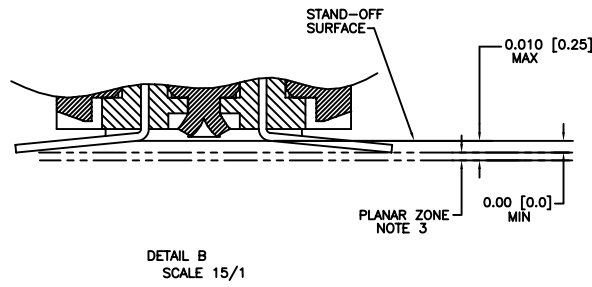
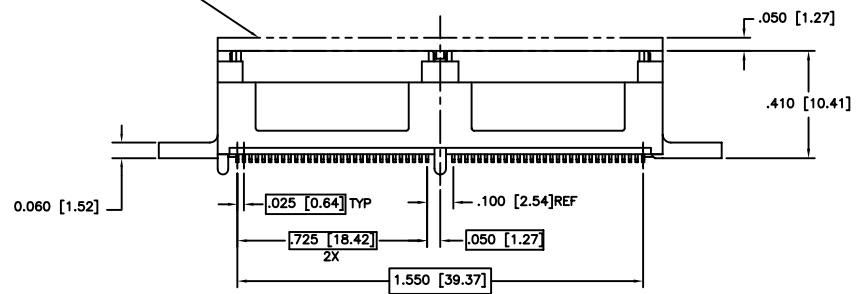
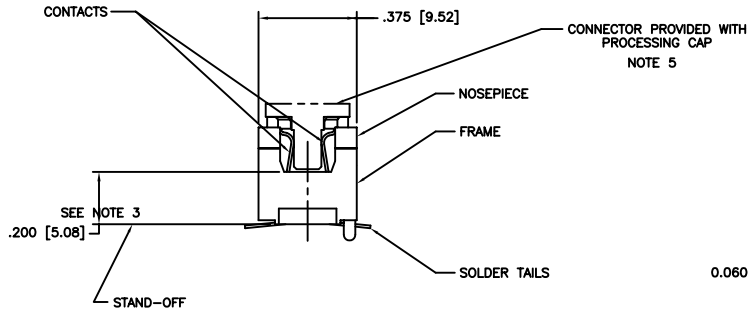
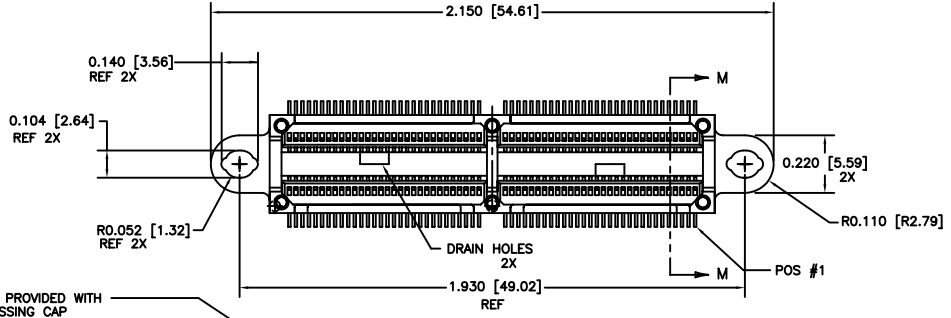
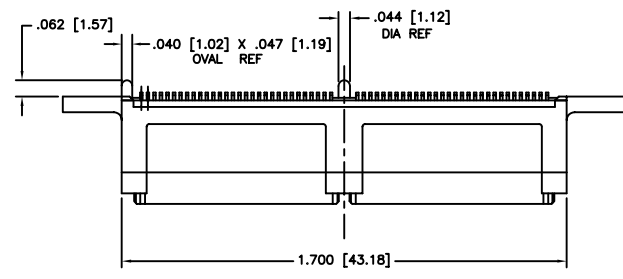
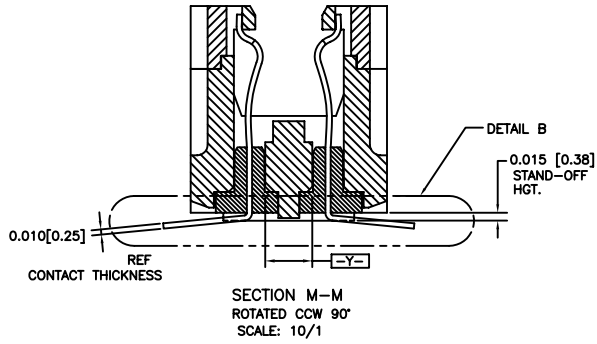


PRODUCT NUMBER

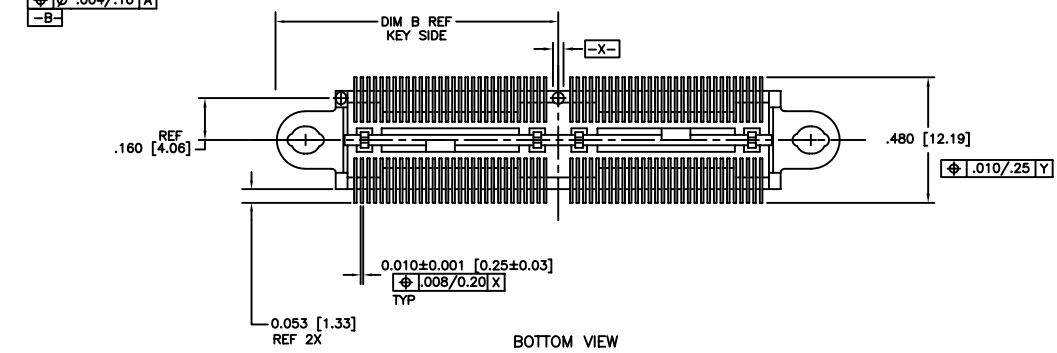
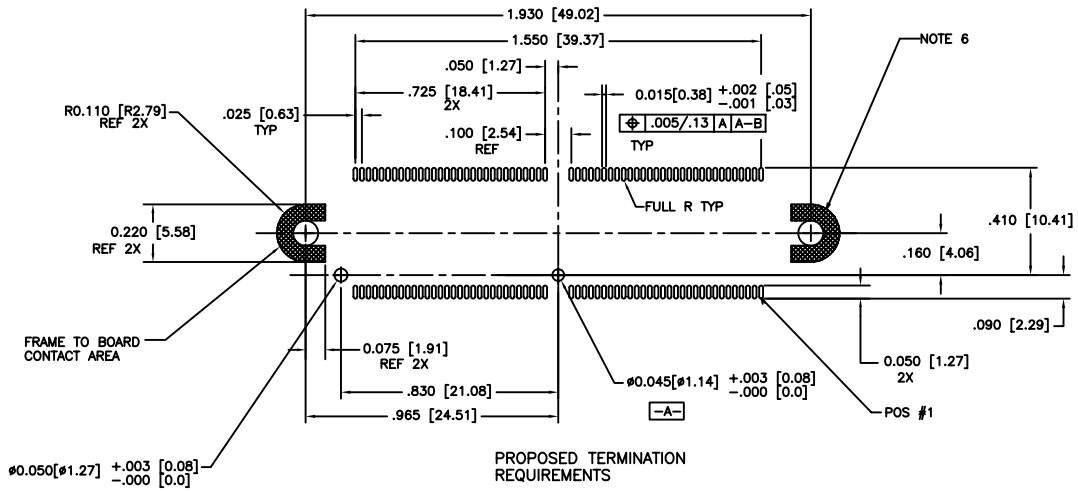
SEE TABLE



mat'l. code		surface ISO 1902		tolerance ISO 406 ISO 1101		projection		product family	
MICROPAX		MICROPAX		MICROPAX		MICROPAX		MICROPAX	
tr	ecp no	dr	date	tolerances unless otherwise specified		INCH/MM		title	
A	v03-0849	GIP	8/04/03	angles	linear	X0±.01/X0±.03		.025M SURFACE MOUNT	
B	m05-0082	MHT	5/06/05			X00±.005/X0±0.13		RECEPT, DOUBLE MODULE	
C	m06-0279	MNR	7/22/06	0°±2°		X000±.0020/X00±0.061		scale 1:1	
D	m08-0251	MHT	9/08/08	dr	T. BRUNGARD	1/21/03		dwg no	
		engr	M. GRAY			1/21/03		sheet 1 of 2 size	
		chr	M. GRAY			1/21/03		10022034 A3	
		appd	M. GRAY			1/21/03		type Product Customer Drawing	
sheet	revision	D	D						
index	sheet	1	2						

FCJ
FCJconnect.com
Copyright FCJ

PRODUCT NUMBER	NO. OF CONTACTS	CONTACT PLATING NOTE 2
10022034-001	120	30 GXT
10022034-001LF		



- NOTES:
- MATERIALS:
DIELECTRIC: LCP
CONTACTS: BeCu
FRAME: ZINC ALLOY #3
 - PLATING:
SOLDER TAILS: 150u"/3.81um Sn Pb
FRAME: 100u"/2.54um Ni
CONTACTS: 30u"/.76um GXT OVER 50u"/1.27um Ni
OR 60u"/1.52um GXT OVER 75u"/1.90um Ni.
LEAD FREE OPTION:
SOLDER TAILS: 150u"/3.81um Sn
FRAME: 100u"/2.54um Ni
CONTACTS: 30u"/.76um GXT OVER 50u"/1.27um Ni
OR 60u"/1.52um GXT OVER 75u"/1.90um Ni.
 - WHEN THE CONNECTOR IS MATED WITH THE OPPOSITE HALF, THE PARALLEL BD. TO BD. HGT. IS .47 ±.01. (APPLYS TO VERT. THRU & SURFACE MT. STYLES)
 - WHEN MEASURED IN THE UNRESTRAINED STATE, THE BOTTOM EDGE OF ALL SOLDER TAIL TIPS SHALL LIE IN A PLANAR ZONE AS DESCRIBED IN DETAIL B. THE ZONE IS DEFINED BY A PLANE ESTABLISHED ACROSS THE BASE OF THE TWO MOUNT LUG/STAND-OFFS.
 - DO NOT REMOVE PROCESSING CAP UNTIL SOLDERING IS COMPLETED. CAP WILL PREVENT POTENTIAL NOSE PIECE BOW DURING HIGH TEMP. SOLDERING PROCESS.
 - FOR HOLDDOWN APPLICATION DATA, INCLUDING HOLE SIZES FOR VARIOUS TYPES OF HARDWARE SEE TA-932.
 - PART NUMBER WITH LF SUFFIX AT THE END IS LEAD FREE.
 - IF "LF" P/N THE PRODUCT MEETS EUROPEAN UNION DIRECTIVES AND OTHER COUNTRY REGULATION AS DESCRIBED IN GS-22-008.
 - THE HOUSING WILL WITHSTAND EXPOSURE TO 260°C PEAK TEMPERATURE FOR 20 SECONDS IN A CONVECTION, INFRA-RED OR VAPOR PHASE REFLOW OVEN.
 - SEE BUS-20-084 (SET-UP APPLICATION SPEC.) FOR REFERENCE.

mat'l. code		surface ISO 1902		tolerance ISO 406 ISO 1101		projection INCH/MM		product family MICROPAX	
ltr	ecn no	dr	date	tolerances unless otherwise specified		scale 1:1		title .025M SURFACE MOUNT RECEPT, DOUBLE MODULE	
D				angles	linear			dwg no 10022034	
				0°±2°				sheet 2 of 2 size A3	
				dr	T. BRUNGARD	1/21/03		type Product Customer Drawing	
				engr	M. GRAY	1/21/03			
				chr	M. GRAY	1/21/03			
				appd	M. GRAY	1/21/03			
sheet index	revision sheet								