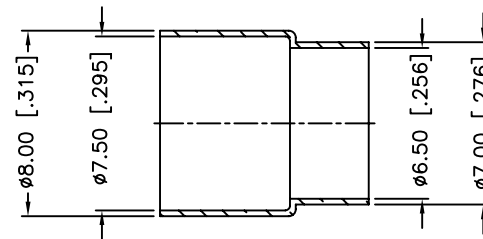
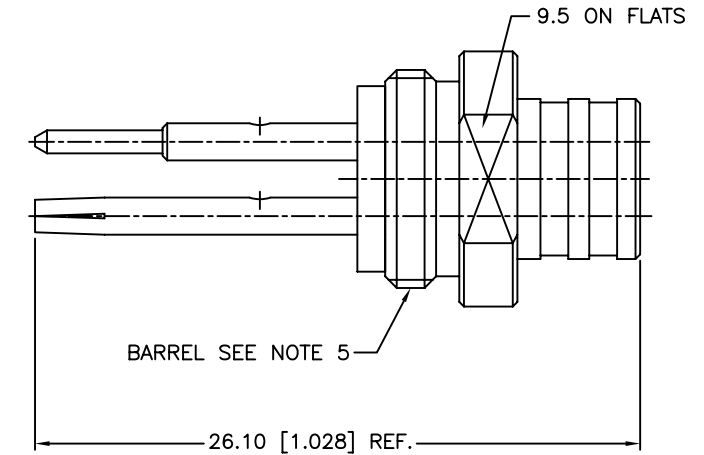
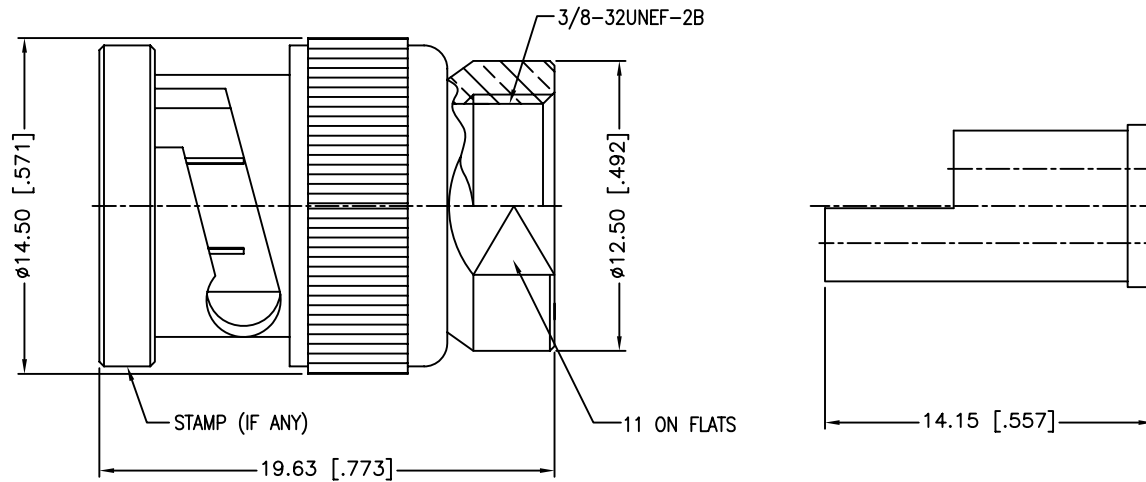


REV.	DATE	ECR NO.	DESCRIPTION
NC	11/21/11	XXXXXX	INITIAL RELEASE
A	11/07/12	2397	THE BARREL CHANGED TO INCREASE INSULATOR RETENTION & REVISE PACKAGING



- NOTES:
- CRIMPED FERRULE
HEX. CRIMP SIZE .278"
 - SOLDER CENTER CONTACTS
 - DIELECTRIC WITHSTANDING VOLTAGE: 500 VRMS, MIN.
 - CENTER CONTACT INSERTION FORCE: 2 LBS MAX.
CENTER CONTACT WITHDRAWAL FORCE: 2 OZ MIN.
 - INTERFACE PER 349-50551 SEC.102 AFTER ASSEMBLY.
 - BARREL MUST ROTATE WITH A 5 ~ 20 IN-LBS. TORQUE.
 - INSULATOR MUST WITHSTAND A PULL-FORCE OF 6 LBS MIN.
 - PACKAGING:
 - 600 PCS OF THE FERRULE IN ITS OWN BAG
 - 600 PCS OF THE CONNECTOR HOUSING IN ITS OWN TRAY,
40 PCS WILL BE PACKAGED PER EACH TRAY
 - 600 PCS OF THE DIELECTRIC IN ITS OWN BAG
 - 600 PCS OF THE CONTACT INSERT WITH RED GASKET INSTALLED IN ITS OWN TRAY
40 PCS WILL BE PACKAGED PER EACH TRAY

13	FERRULE	BRASS	NICKEL	1
12	BARREL	BRASS	NICKEL	1
11	INSULATOR	PBT	WHITE	1
10	GASKET	SILICONE	RED	1
9	CONTACT PIN	PHOSPHOR BRONZE	GOLD	1
8	CONTACT PIN	BRASS	GOLD	1
7	INSULATOR	PBT	WHITE	1
6	WASHER	BRASS	NICKEL	1
5	SPRING	BER. COPPER	NICKEL	1
4	RETAINER RING	BRASS	NICKEL	1
3	GASKET	RUBBER	RED	1
2	BODY	BRASS	NICKEL	1
1	SHELL	BRASS	NICKEL	1
	DESCRIPTION	MATERIAL	FINISH	QTY

UNLESS OTHERWISE SPECIFIED DIMENSIONS ARE IN MILLIMETERS. DIMENSIONS IN [] ARE IN INCHES AND FOR CUSTOMER REFERENCE ONLY.

UNLESS OTHERWISE SPECIFIED TOLERANCES FOR MILLIMETERS ARE:
 0.5 - 8mm ± 0.20mm
 8 - 30mm ± 0.40mm
 30 - 120mm ± 0.50mm

UNLESS OTHERWISE SPECIFIED TOLERANCES FOR INCHES ARE:
 .020 - .315 = ± 0.007"
 .315 - 1.180 = ± 0.015"
 1.180 - 4.724 = ± 0.020"

DO NOT SCALE DRAWING

APPROVALS		DATE
DRAWN	M.ZHANG	11/07/12
CHECKED		
ISSUED		
SHEET	1 OF 1	
CAD FILE	C:/CONNEX/162108B.DWG	

Amphenol Connex

PART DESCRIPTION			
BNC TWIN PLUG (FOR RG-108A/U CABLE)			
PART NO.		162108B	
DWG. NO.	162108B.DWG	REV.	A
SIZE	A	SCALE	NA