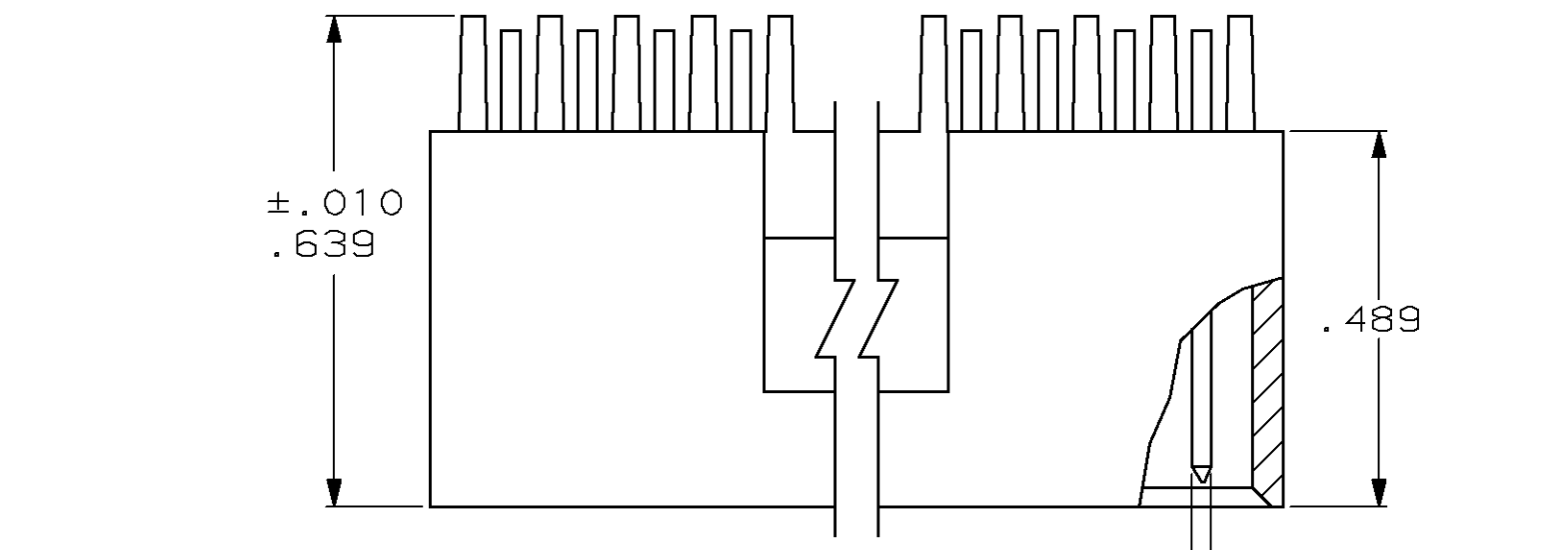
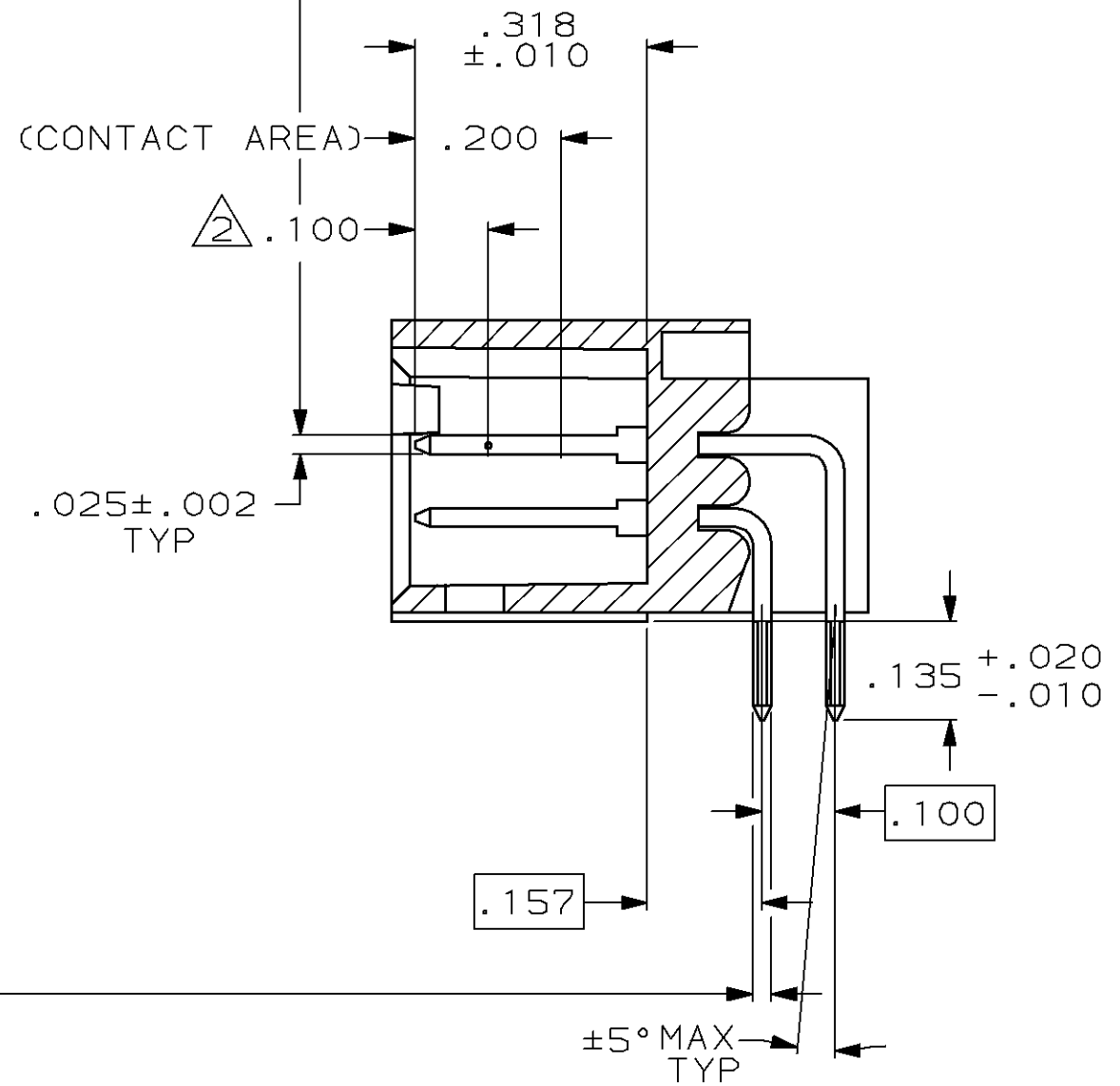
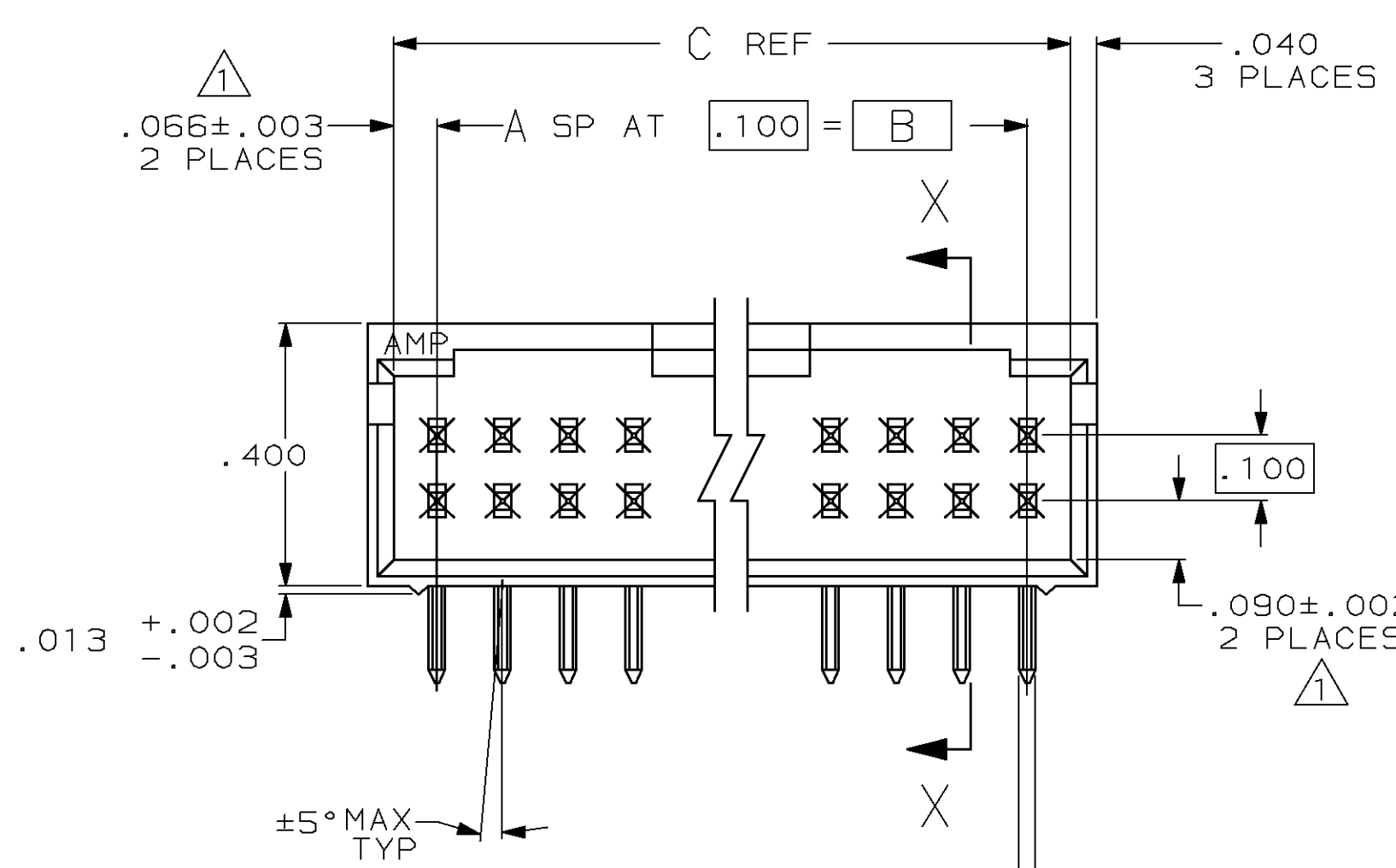


MOD		LOC		DIST		REV		REVISIONS		DATE	APPD
25	AD	39	P	F	ZONE	LTR		DESCRIPTION			
								A	REV & REDRAWN ECN 1610	-	-
								B	REV PER AR-2217	BM	-
								C	RV PER AR-2605	SH	7/89
								D	REV PER ECN AR2699	10-03-89	KIH
								E	REV LOC & DIST AD-4171	3-90	BF
								F	ECN AD-4707	08/02/90	KIH
								G	REV PER AD-5084	1-31-91	-
								H	REV PER 0310-0040-96	12-14-96	SAS
								J	REV PER 0310-0430-97	19JUN98	SAS

- ① THE NOTED DIMENSIONS APPLY AT THE INTERSECTION OF THE POST AND HOUSING
- ② POINT OF MEASUREMENT FOR PLATING THICKNESS
- ③ PACKAGED IN SINGLE TUBES

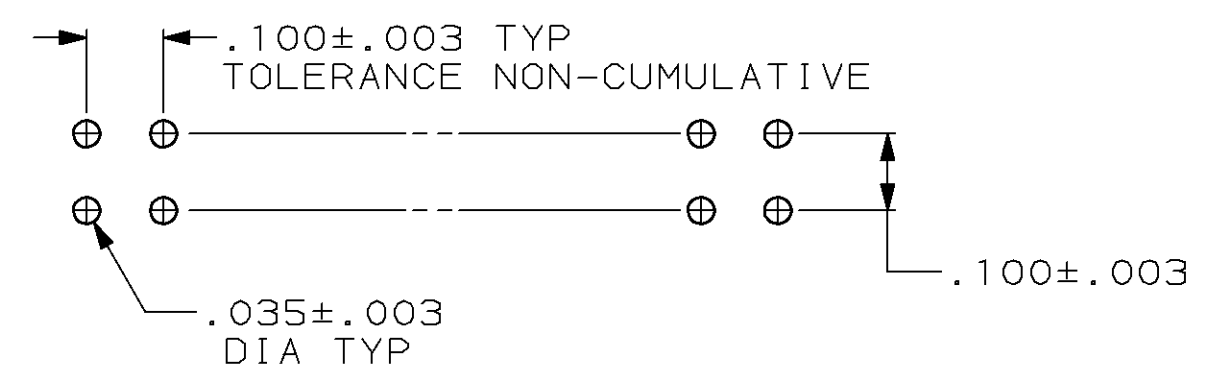
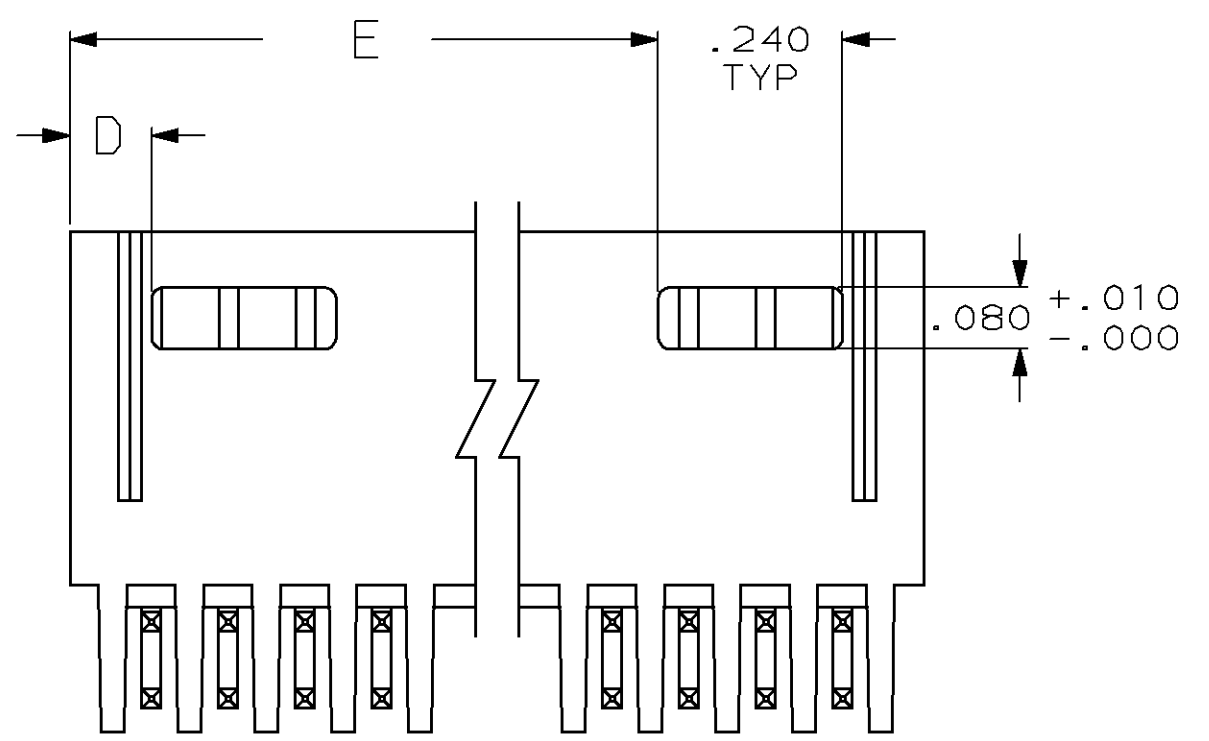


① .015 M TYP AT POST TIPS



SECTION X-X

① .015 M TYP AT POST TIPS



RECOMMENDED HOLE LAYOUT

NO OF POSN	A	B	C	D	E	ASSEMBLY PART NUMBER
74	36	3.600	3.732	.106	3.506	3-103166-6
72	35	3.500	3.632	.106	3.406	3-103166-5
70	34	3.400	3.532	.106	3.306	3-103166-4
68	33	3.300	3.432	.106	3.206	3-103166-3
66	32	3.200	3.332	.106	3.106	3-103166-2
64	31	3.100	3.232	.106	3.006	3-103166-1
62	30	3.000	3.132	.106	2.906	2-103166-9
60	29	2.900	3.032	.106	2.806	2-103166-8
58	28	2.800	2.932	.106	2.706	2-103166-7
56	27	2.700	2.832	.106	2.606	2-103166-6
54	26	2.600	2.732	.106	2.506	2-103166-5
52	25	2.500	2.632	.106	2.406	2-103166-4
50	24	2.400	2.532	.106	2.306	2-103166-3
48	23	2.300	2.432	.106	2.206	2-103166-2
46	22	2.200	2.332	.106	2.106	2-103166-1
44	21	2.100	2.232	.106	2.006	2-103166-0
42	20	2.000	2.132	.106	1.906	1-103166-9
40	19	1.900	2.032	.106	1.806	1-103166-8
38	18	1.800	1.932	.106	1.706	1-103166-7
36	17	1.700	1.832	.106	1.606	1-103166-6
34	16	1.600	1.732	.106	1.506	1-103166-5
32	15	1.500	1.632	.106	1.406	1-103166-4
30	14	1.400	1.532	.106	1.306	1-103166-3
28	13	1.300	1.432	.106	1.206	1-103166-2
26	12	1.200	1.332	.106	1.106	1-103166-1
24	11	1.100	1.232	.106	1.006	1-103166-0
22	10	1.000	1.132	.106	.906	103166-9
20	9	.900	1.032	.106	.806	103166-8
18	8	.800	.932	.406	.706	103166-7
16	7	.700	.832	.306	.606	103166-6
14	6	.600	.732	.306	.506	103166-5
12	5	.500	.632	.206	.406	103166-4
10	4	.400	.532	.206	.306	103166-3
8	3	.300	.432	.106	.206	103166-2
6	2	.200	.332	.106	.106	103166-1

UNLESS OTHERWISE SPECIFIED DIMENSIONS ARE IN INCHES TOLERANCES ON :		DR 7-27-87 H MOLL		AMP INCORPORATED Harrisburg, Pa. 17105
2 PL DEC ±-. 3 PL DEC ±.005 ANGLES ±-		CHK 7-29-87 L A MAYER		
MATERIAL: HOUSING: FLAME RETARDANT THERMOPLASTIC, COLOR-BLACK		APPD 7-28-87 R FEIDT		NAME HDR ASSY, MOD II, SHROUDED, 4 SIDES, DBL ROW, .100X.100¢, RIGHT ANGLE, W/ .025 SQ POSTS
POSTS: PHOS BRONZE FINISH: POSTS: .000030 GOLD IN CONTACT AREA, .000100-.000200 MATTE TIN- LEAD ON SOLDER TAIL, ALL OVER .000050 NICKEL		APPD 7-29-87 R ELICKER		
PRODUCT SPEC		APPLICATION SPEC		SIZE D
WEIGHT		SCALE 4:1		FSCM NO 00779
		SHEET 1 OF 1		DRAWING NO 103166