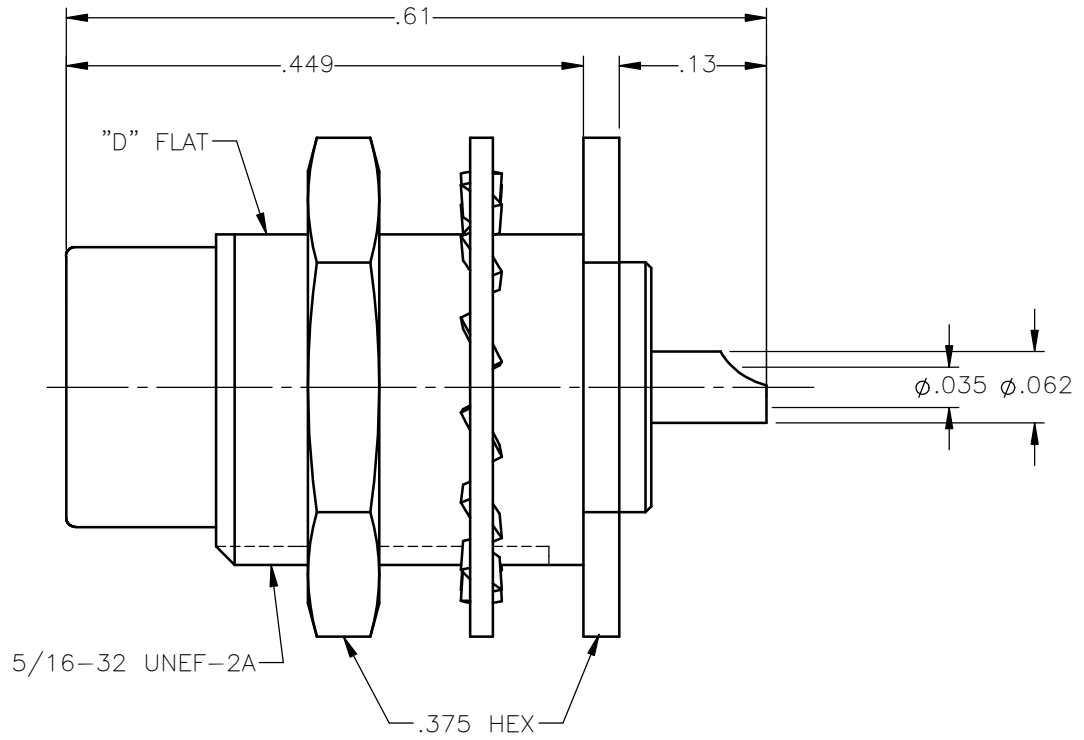


| REVISIONS | | | |
|-----------|-----------------|----------|----------|
| REV. | DESCRIPTION | DATE | APPROVED |
| A | INITIAL RELEASE | 02/06/14 | J.S. |





NOTES:

MATERIALS:

1. LOCKWASHER = PHOSPHOR BRONZE PER ASTM B139, COPPER ALLOY C53400, TEMPER H04.
2. INSULATOR = VIRGIN WHITE TEFLON PER ASTM D1710, GRADE 1, TYPE I, CLASS "B".
3. ALL OTHER METAL PARTS = BRASS PER ASTM B16, ALLOY C36000, TEMPER H02.

FINISHES:

1. CONTACT = GOLD PLATE PER MIL-G-45204, TYPE II, CLASS 1, GRADE C, OVER .00010 TO .00020 STRESS FREE SULFAMATE NICKEL PER QQ-N-290.
2. ALL OTHER METAL PARTS = GOLD PLATE PER MIL-G-45204, TYPE II, CLASS 0, GRADE C, OVER .00010 TO .00020 COPPER STRIKE PER MIL-C-14550.

| | | | | |
|-------------------------------------------------------------------------|-----------------------|----------|------------------------------------------------------------------------------------------------------------------------------------------------------------------------------------------------------------------------------------------|---------------------------------------------------------------------------------------------------|
| UNLESS OTHERWISE SPECIFIED DIMENSIONS ARE IN INCHES TOLERANCES ON | DWN: | DATE |  Property of Radiall This document cannot be reproduced or communicated to a third party without prior written permission of RADIALL. |  |
| | J.S. | 02/06/14 | | |
| | CHKD: | DATE | | |
| DECIMAL | ANGLE | D.N. | 02/06/14 | 75OHM STRAIGHT MALE JACK SCREW ON REAR MOUNT BULKHEAD RECEPTACLE |
| | | APVD: | DATE | |
| | | J.M. | 02/06/14 | SIZE A FSCM NO. 19505 DWG NO. 1704-1511-000 REV A |
| REFERENCE: | MATERIALS & FINISHES: | | SCALE 6:1 | THIRD ANGLE PROJECTION |
| ORIGINATED: J.S. DATE: 02/06/14 | SEE NOTES | | | SHEET 1 OF 1 |

1704-1511-000