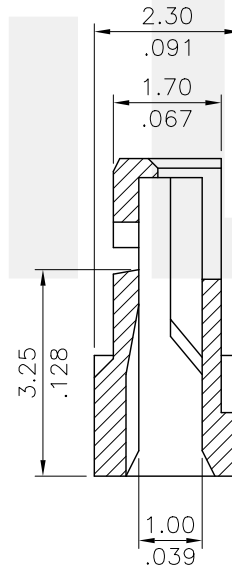
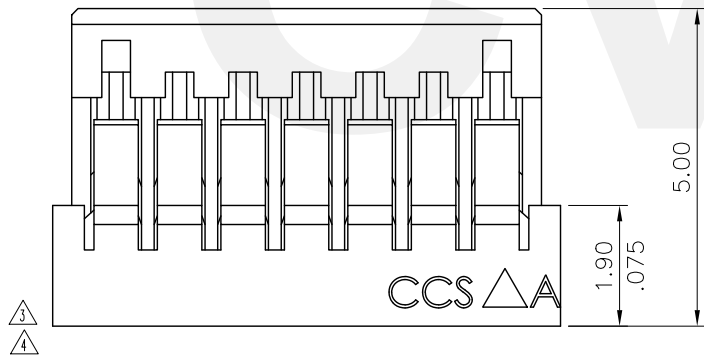
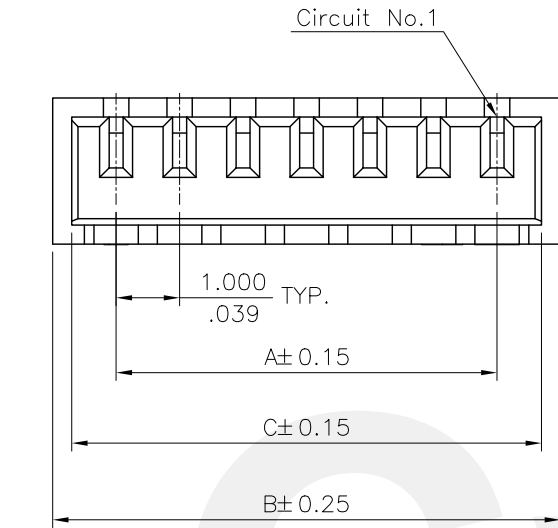


Material:
Glass filled polyester UL 94V-0,
Color Nature

Ordering Code

CI14 ** S 0000 - NH
① ② ③ ④ ⑤

- ① Series No.
- ② No. of Circuits: 2~20 Pin
- ③ S= Connector housing
- ④ Other option:
0000= Standard
- ⑤ Other option:
-NH= Halogen-Free



| Circuits | Dimension | | |
|----------|------------|------------|------------|
| | A | B | C |
| 2 | 1.0(.039) | 3.0(.118) | 2.4(.094) |
| 3 | 2.0(.079) | 4.0(.157) | 3.4(.134) |
| 4 | 3.0(.118) | 5.0(.197) | 4.4(.173) |
| 5 | 4.0(.157) | 6.0(.236) | 5.4(.213) |
| 6 | 5.0(.197) | 7.0(.276) | 6.4(.252) |
| 7 | 6.0(.236) | 8.0(.315) | 7.4(.291) |
| 8 | 7.0(.276) | 9.0(.354) | 8.4(.331) |
| 9 | 8.0(.315) | 10.0(.394) | 9.4(.370) |
| 10 | 9.0(.354) | 11.0(.433) | 10.4(.409) |
| 11 | 10.0(.394) | 12.0(.472) | 11.4(.449) |
| 12 | 11.0(.433) | 13.0(.512) | 12.4(.488) |
| 13 | 12.0(.472) | 14.0(.551) | 13.4(.528) |
| 14 | 13.0(.512) | 15.0(.591) | 14.4(.567) |
| 15 | 14.0(.551) | 16.0(.630) | 15.4(.606) |
| 16 | 15.0(.591) | 17.0(.669) | 16.4(.646) |
| 17 | 16.0(.630) | 18.0(.709) | 17.4(.685) |
| 18 | 17.0(.669) | 19.0(.748) | 18.4(.724) |
| 19 | 18.0(.709) | 20.0(.787) | 19.4(.764) |
| 20 | 19.0(.748) | 21.0(.827) | 20.4(.803) |

Halogen-Free
RoHS Compliant

| | | | | | | | | | | |
|-----|-------|-----------|-----------------------|--|--------------|--------|-----------------|---|------------------------------------|-------------------------|
| ④ | Enya | 6/4-13' | ECN13127-0/ECR13006-2 | | | DATE | UNIT: mm / inch | TITLE: | 瀚荃股份有限公司 CviLux Corporation | |
| ③ | Sun | 4/01-11' | ECR11003-2/ECN11063 | | DRAWN BY: | Enya | 6/4-13' | TOLERANCE UNLESS OTHERWISE SPECIFIED | | C114 SERIES HOUSING |
| ② | Sun | 11/25-09' | ECN09565 | | ENGINEER: | Eisley | 6/7-13' | .X ± 0.25/.010 X' ± 1' | | MATERIAL: |
| ① | Eager | 6/18-09' | ECN09310 | | CHECKED BY: | Eisley | 6/7-13' | .XX ± 0.15/.006 .X' ± | | FINISH: |
| SYM | NAME | DATE | REVISIONS | | APPROVED BY: | David | 6/7-13' | .XXX ± 0.08/.003 .XX' ± | | |
| | | | | | | | | | DRAWING NO. CI1405SD | PART NO. CI14**S0000-NH |
| | | | | | | | | | SCALE 8 / 1 | SHEET 1 OF 1 |