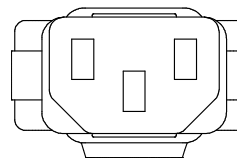
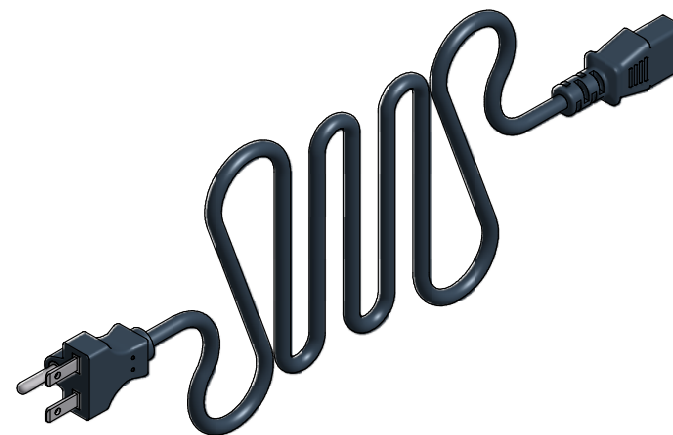


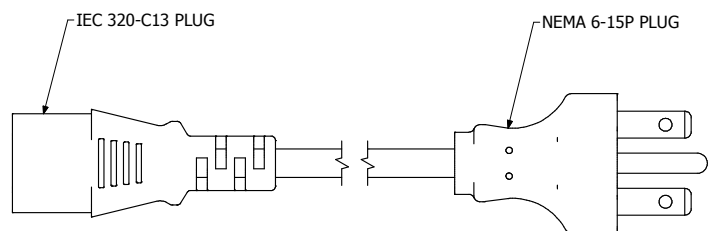
TOP VIEW



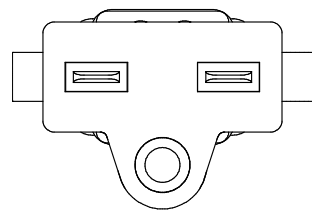
IEC PLUG



ISOMETRIC VIEW



SIDE VIEW



NA PLUG

1581C6NA250
Rated - 10 Amps / 250 VAC
Standard - 18/3 SJT Cord
Molded Plug Ends With Strain Relief
6' Foot Cord Length



**HAMMOND
MANUFACTURING™**

1581C6NA250

www.hammondmfg.com