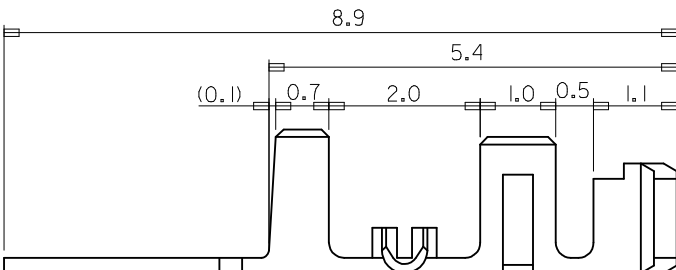


- NOTES :
- ①. MATERIAL: SEE TABLE
 - ②. FINISHES:
 TIN(Sn) THICKNESS = 3.0µm MINIMUM
 NICKEL(Ni) UNDERPLATE THICKNESS= 1~3µm
 - 3. PRODUCT SPECIFICATION: PS-35021-001
 - 4. PACKAGING SPECIFICATION: PK-35021-001
 - 3. MATES WITH(USED HOUSING): 35022-00**/35023-00**/68418-**00
 - 4. THIS PRODUCT IS LEAD FREE OF 35021-**10
 - ③④ INDICATION ∇ FORMED IN MANUFACTURING IS TO IMPROVE THE DIMENSION AND FUNCTION OF THE PRODUCT. THAT SHOULD BE SEEN OR NOT PER LOT OF STRIP. PLEASE USE IT AS THE REFERENCE.



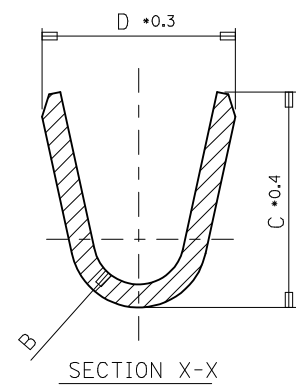
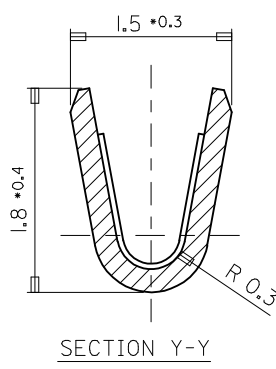
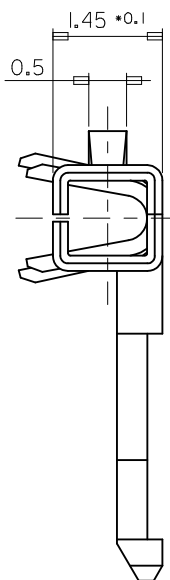
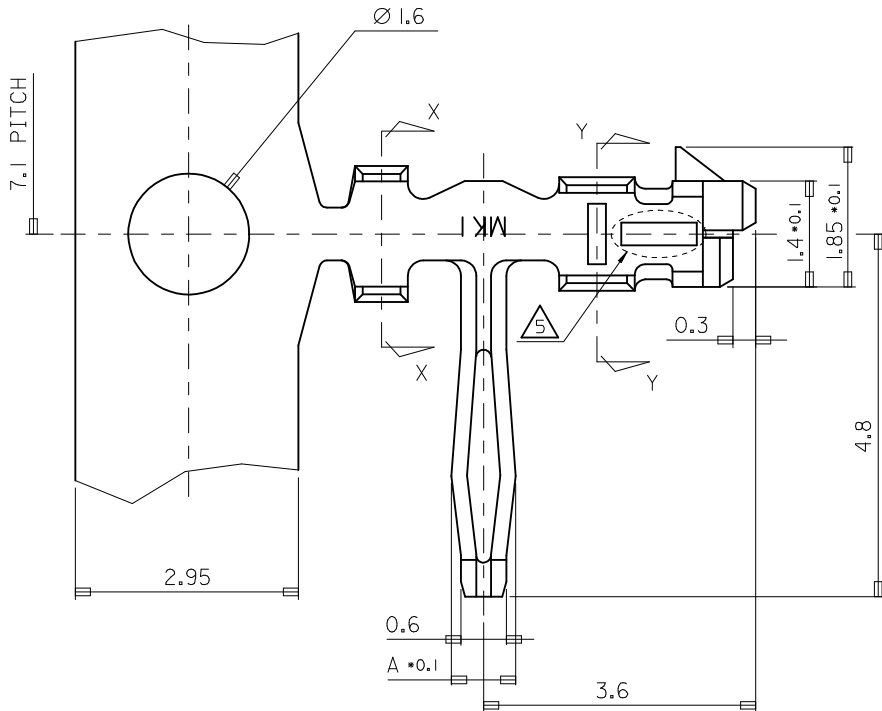
[TABLE]

POST-PLATED	PHOS. BRON.	AWG #24-#30 (INS. DIA: Ø 1.5 MAX.)	1.8	1.9	R0.4	0.85	35021I360	35021-I360
POST-PLATED	PHOS. BRON.	AWG #22-#28 (INS. DIA: Ø 1.9 MAX.)	2.5	2.5	R0.7	1.05	35021I160	35021-I160
PLATING	MATERIAL	WIRE RANGE	D	C	B	A	MAT'L NO.	ENG NO.

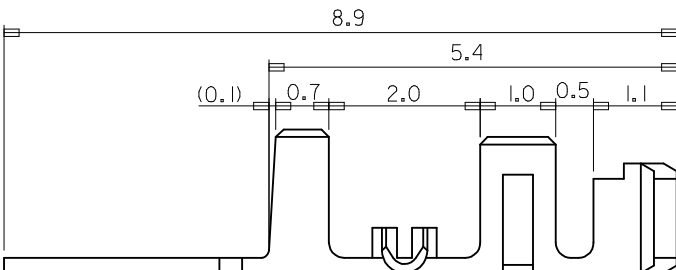
LEAD FREE

REVISED EC NO: KOR2017-0052 DRWN: SCHONG03 2017/05/17 CHKD: SHCHU 2017/05/17 APPR: YSKI M02 2017/05/18	QUALITY SYMBOLS	GENERAL TOLERANCES (UNLESS SPECIFIED)	DIMENSION STYLE	SCALE	DESIGN UNITS	THIRD ANGLE PROJECTION
	$\nabla=0$ $\square=0$	mm INCH 4 PLACES ± --- ± --- 3 PLACES ± --- ± --- 2 PLACES ± 0.30 ± --- 1 PLACE ± 0.30 ± --- 0 PLACE ± --- ± ---	MM ONLY	15:1	METRIC	DRAWN BY DATE HSSHIN 2004/09/30 CHECKED BY DATE JKOH 2004/09/30 APPROVED BY DATE CWLEE 2004/09/30
	DESCRIPTION	ANGULAR ± 1 °				TITLE R/A B-IN TERMINAL -LEAD FREE-
	REV	DRAFT WHERE APPLICABLE MUST REMAIN WITHIN DIMENSIONS	SEE TABLE			MATERIAL NO. DOCUMENT NO. SHEET NO. SEE TABLE SD-35021-002 1 OF 1

THIS DRAWING CONTAINS INFORMATION THAT IS PROPRIETARY TO MOLEX INCORPORATED AND SHOULD NOT BE USED WITHOUT WRITTEN PERMISSION



- NOTES :
- ①. MATERIAL: SEE TABLE
 - ②. FINISHES:
 TIN(Sn) THICKNESS = 3.0µm MINIMUM
 NICKEL(Ni) UNDERPLATE THICKNESS= 1~3µm
 - 3. PRODUCT SPECIFICATION: PS-35021-001
 - 4. PACKAGING SPECIFICATION: PK-35021-001
 - 3. MATES WITH(USED HOUSING): 35022-00**/35023-00**/68418-**00
 - 4. THIS PRODUCT IS LEAD FREE OF 35021-**10
 - ③④ INDICATION ∇ FORMED IN MANUFACTURING IS TO IMPROVE THE DIMENSION AND FUNCTION OF THE PRODUCT. THAT SHOULD BE SEEN OR NOT PER LOT OF STRIP. PLEASE USE IT AS THE REFERENCE.



[TABLE]

POST-PLATED	PHOS. BRON.	AWG #24-#30 (INS. DIA: Ø 1.5 MAX.)	1.8	1.9	R0.4	0.85	35021I360	35021-I360
POST-PLATED	PHOS. BRON.	AWG #22-#28 (INS. DIA: Ø1.9 MAX.)	2.5	2.5	R0.7	1.05	35021I160	35021-I160
PLATING	MATERIAL	WIRE RANGE	D	C	B	A	MAT'L NO.	ENG NO.

LEAD FREE

REVISED EC NO: KOR2017-0052 DRWN: SCHONG03 2017/05/17 CHKD: SHCHU 2017/05/17 APPR: YSK IM02 2017/05/18	QUALITY SYMBOLS	GENERAL TOLERANCES (UNLESS SPECIFIED)	DIMENSION STYLE	SCALE	DESIGN UNITS	THIRD ANGLE PROJECTION
	$\nabla=0$ $\square=0$	mm INCH 4 PLACES ± --- ± --- 3 PLACES ± --- ± --- 2 PLACES ± 0.30 ± --- 1 PLACE ± 0.30 ± --- 0 PLACE ± --- ± ---	MM ONLY	15:1	METRIC	
	DESCRIPTION	ANGULAR ± 1 °	DRAWN BY	DATE	TITLE	R/A B-IN TERMINAL -LEAD FREE- molex
	REV	DRAFT WHERE APPLICABLE MUST REMAIN WITHIN DIMENSIONS	HSSHIN 2004/09/30 CHECKED BY JKOH 2004/09/30 APPROVED BY CWLEE 2004/09/30	MATERIAL NO. SEE TABLE	DOCUMENT NO. SD-35021-002	

THIS DRAWING CONTAINS INFORMATION THAT IS PROPRIETARY TO MOLEX INCORPORATED AND SHOULD NOT BE USED WITHOUT WRITTEN PERMISSION