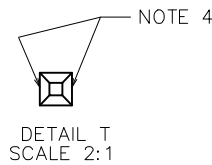
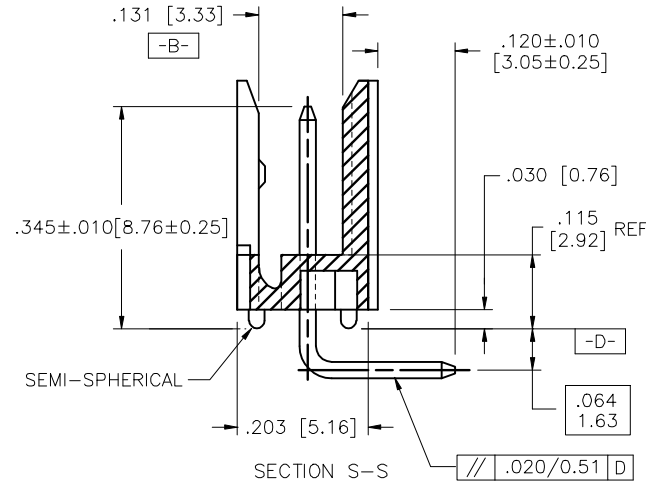
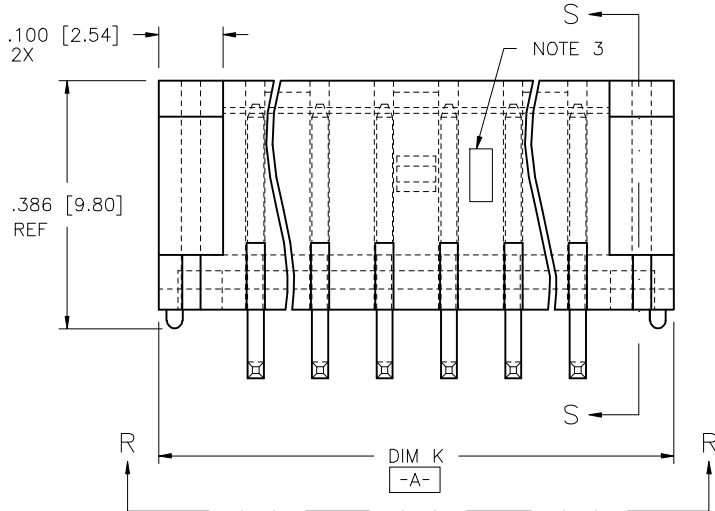
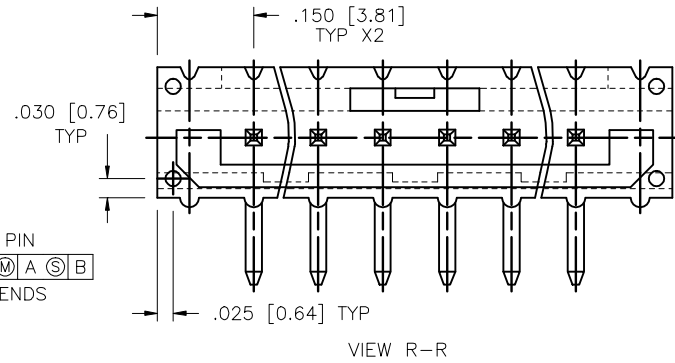
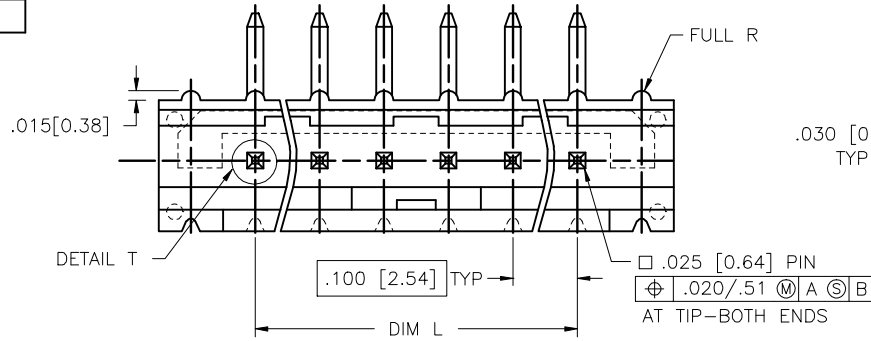


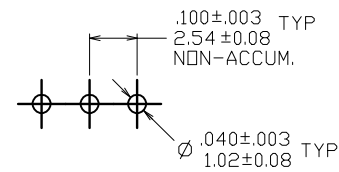
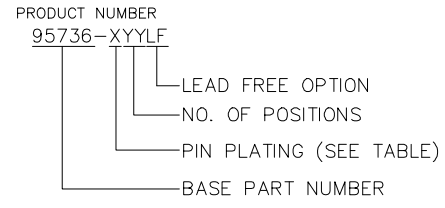
PRODUCT NO.
SEE TABLE



| | | | | | | | |
|-------------|----------|-----|----------|---------------------------------------|----------------------------------|------------------------|------------------------------------------------|
| mat'l. code | | | | surface ISO 1302 ✓ | tolerance ISO 406 ISO 1101 | projection ISO 1002 | product family HEADER |
| ltr | ecn no | dr | date | tolerances unless otherwise specified | | INCH/MM | title CLINCHER™ LATCH HEADER RIGHT ANGLE |
| B | V60842 | EPK | 6/3/96 | angles | .XX±.01/XX±0.3 | | |
| C | C71289 | HTB | 9/22/97 | linear | .XXX±.006/XX±0.13 | scale 4:1 | dwg no 95736 |
| D | M05-0109 | MHT | 7/15/05 | 0°±2' | .XXX±.0020/XXX±0.05 | | sheet 1 of 2 size A3 |
| E | M06-0052 | MHT | 1/30/06 | dr | T.BREWBAKER | 5/23/95 | type Product Customer Drawing |
| F | M06-0233 | AGS | 6/13/06 | engr | T. HANNA | 5/23/95 | |
| G | M06-0469 | MHT | 11/28/06 | chr | T. HANNA | 5/23/95 | |
| H | M09-0059 | MHT | 4/16/09 | appd | T. HANNA | 7/6/95 | |
| sheet | revision | | H | H | | | |
| index | sheet | 1 | 2 | | | | |

| PRODUCT NO. NOTE 5 | NO. OF POSITIONS | DIM K | | DIM L | | NOTES |
|-----------------------|---------------------|---------|--------|---------|--------|-------|
| | | ENGLISH | METRIC | ENGLISH | METRIC | |
| 95736-X02 | 1 X 2 | 0.400 | 10.16 | 0.100 | 2.54 | - |
| 95736-X03 | 1 X 3 | 0.500 | 12.70 | 0.200 | 5.08 | - |
| 95736-X04 | 1 X 4 | 0.600 | 15.24 | 0.300 | 7.62 | - |
| 95736-X05 | 1 X 5 | 0.700 | 17.78 | 0.400 | 10.16 | - |
| 95736-X06 | 1 X 6 | 0.800 | 20.32 | 0.500 | 12.70 | - |
| 95736-X07 | 1 X 7 | 0.900 | 22.86 | 0.600 | 15.24 | - |
| 95736-X08 | 1 X 8 | 1.000 | 25.40 | 0.700 | 17.78 | - |
| 95736-X09 | 1 X 9 | 1.100 | 27.94 | 0.800 | 20.32 | - |
| 95736-X10 | 1 X 10 | 1.200 | 30.48 | 0.900 | 22.86 | - |
| 95736-X11 | 1 X 11 | 1.300 | 33.02 | 1.000 | 25.40 | - |
| 95736-X12 | 1 X 12 | 1.400 | 35.56 | 1.100 | 27.94 | - |
| 95736-X13 | 1 X 13 | 1.500 | 38.10 | 1.200 | 30.48 | - |
| 95736-X14 | 1 X 14 | 1.600 | 40.64 | 1.300 | 33.02 | - |
| 95736-X15 | 1 X 15 | 1.700 | 43.18 | 1.400 | 35.56 | - |
| 95736-X16 | 1 X 16 | 1.800 | 45.72 | 1.500 | 38.10 | - |

| DASH NO | OVERPLATING | UNDERPLATING |
|---------|-----------------------------|-------------------|
| -1YY | 30u"/.76u MIN (SEE NOTE 8) | 50u"/1.27u MIN Ni |
| -1YYLF | 30u"/.76u MIN (SEE NOTE 8) | 50u"/1.27u MIN Ni |
| -4YY | 100u"/2.54u MIN Sn (NOTE 9) | 50u"/1.27u MIN Ni |
| -4YYLF | | 50u"/1.27u MIN Ni |



SCALE 3/1
RECOMMENDED HOLE PATTERN

NOTE

- MOLDING MATERIAL: HIGH TEMPERATURE PLASTIC FLAME RETARDENT PER UL-94V-0. COLOR: NATURAL
- PIN MATERIAL: 3/4 HD PHOS. BRONZE
- LOGO TO BE LOCATED APPROX. AS SHOWN.
- TWO NON-CRITICAL SIDES OF PIN TIP NOT PLATED, BOTH ENDS.
- FOR LEAD FREE OPTION ADD "LF" IN THE END OF THE EXISTING PART NUMBERS.
- IF "LF" P/N THE PRODUCT MEETS EUROPEAN UNION DIRECTIVES AND OTHER COUNTRY REGULATION AS DESCRIBED IN GS-22-008.
- THE HOUSING WILL WITHSTAND EXPOSURE TO 260°C PEAK TEMPERATURE FOR 20-30 SECONDS IN A CONVECTION, INFRA-RED OR VAPOR PHASE REFLOW OVEN. SEE APPLICATION NOTES/PROCEDURES IF THEY ARE AVAILABLE OR THE HOUSING WILL WITHSTAND EXPOSURE TO 260°C PEAK TEMPERATURE FOR 15 SECONDS IN A WAVE SOLDER APPLICATION WITH A 1.5mm MINIMUM THICK CIRCUIT BOARD. SEE APPLICATION NOTES/PROCEDURES IF THEY ARE AVAILABLE.
- PLATING OPTIONS: MAY BE EITHER GOLD OR GXT PLATED AT THE MANUFACTURER'S CHOICE
- "THIS PRODUCT HAS 100% TIN PLATING IN THE INTERFACE AND HAS NOT BEEN TESTED FOR WHISKER GROWTH IN ALL INTERCONNECT ENVIRONMENTS."

| | | | | | |
|---------------------------------------|----------------|-------------------------------------------------------------|----------------------------------|------------------------------------------------|--------------------------|
| mal't. code | | surface ISO 1302 | tolerance ISO 406 ISO 1101 | projection 1st angle | product family HEADER |
| ltr | ecn no | dr | date | title CLINCHER™ LATCH HEADER RIGHT ANGLE | |
| tolerances unless otherwise specified | | | | INCH/MM | scale 4:1 |
| angles | | linear | | scale 4:1 | |
| 0°±2' | | .XX±.01/XX±0.3 .XXX±.006/XXX±0.13 .XXX±.0020/XXX±0.05 | | scale 4:1 | |
| dr | T. BREWBAKER | | 5/23/95 | dwg no 95736 sheet 2 of 2 size A3 | |
| engr | T. HANNA | | 5/23/95 | type Product Customer Drawing | |
| chr | T. HANNA | | 5/23/95 | | |
| appd | T. HANNA | | 7/6/95 | | |
| sheet index | revision sheet | | | | |

FCJ
FCconnect.com
Copyright FCJ