



WWW.BARRYIND.COM

ATC2525CT-2000JN-94



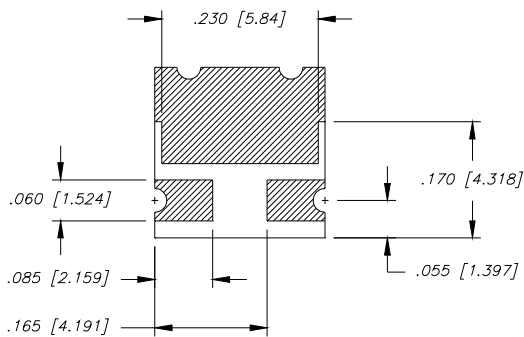
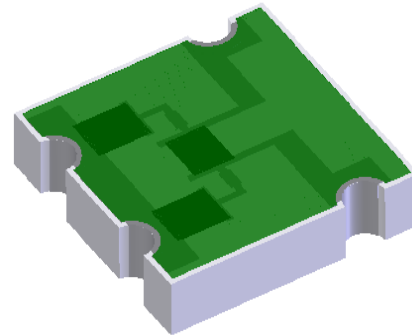
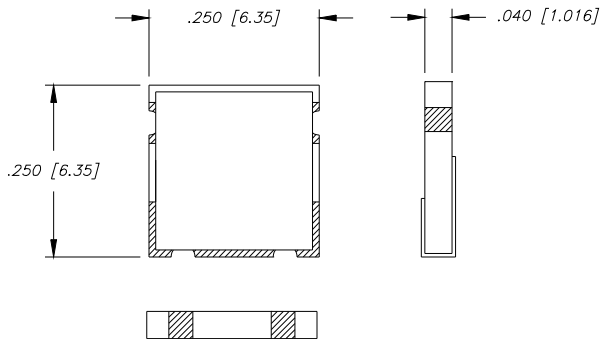
Alumina 20dB SURFACE MOUNT ATTENUATOR

Features:

- ◆ Alumin Material
- ◆ DC - 2 GHz Performance
- ◆ 15 Watt Input Power
- ◆ Surface Mountable

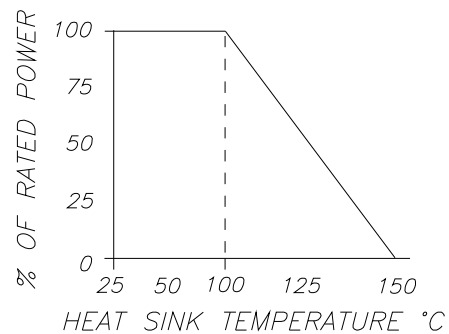
General Description:

The ATC2525CT-2000JN-94 is a 20 dB Alumina surface mount chip attenuator. It has an input power of 15 watts, while maintaining a constant mounting surface temperature of 100°C. It offers a frequency range from DC to 2 GHz.



Dimensions in inches
Tolerance $\pm .010$
unless otherwise stated

DERATING CURVE:



Parameter	Min.	Typ.	Max	Units
Frequency Range	DC		2	GHz
Attenuation	19	20	21	dB
Input/Output Return Loss (DC - 1GHz) (1 - 2 GHz)	20 10			dB
Power Dissipation			15	Watts
Mounting Surface Temperature			100	°C

Barry Industries reserves the right to change part number and or process without notification.

Barry Industries, Inc., 60 Walton St., Attleboro, MA 02703 T: 508-226-3350 F: 508-226-3317 E-mail: sales@barryind.com
Barry Industries maintains an ISO 9001 Certified Quality Management System

Origination Date	Revision Date	Rev.
09/26/08	09/26/08	-