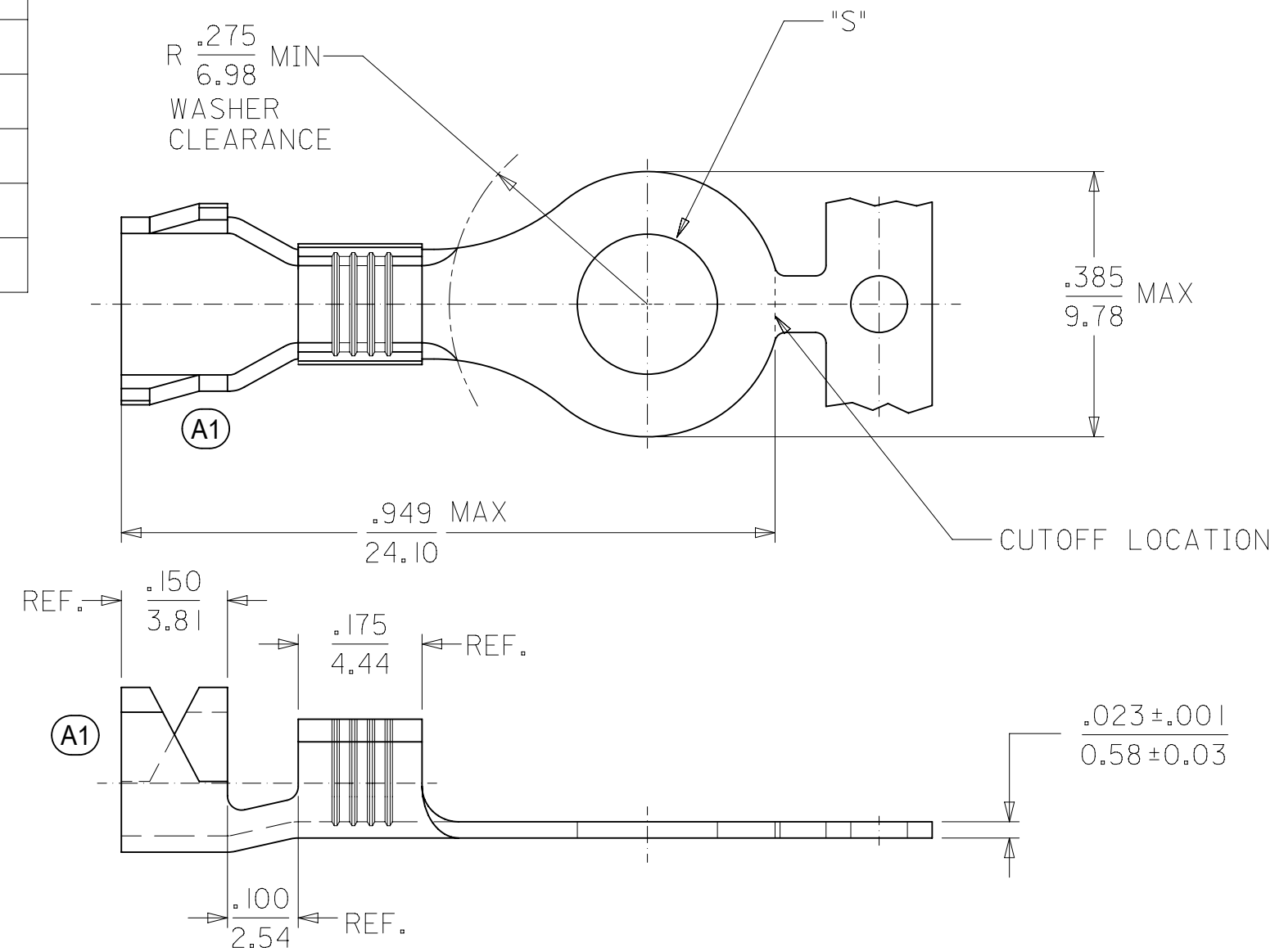


MATERIAL NUMBER	ENGINEERING NUMBER	STUD SIZE "S" ±.010/.(0.25)	MATERIAL	PLATING
190850002	19085-0002	#8 = .173/(4.39)	BRASS	NONE
190850003	19085-0003	#10 = .198/(5.03)	BRASS	NONE
190850004	RZ-4129-06	#6 = .146/(3.71)	BRASS	TIN
190850005	RZ-4129-08	#8 = .173/(4.39)	BRASS	TIN
190850006	RZ-4129-10	#10 = .198/(5.03)	BRASS	TIN
190850007	RZ-S-4129-06	#6 = .146/(3.71)	STEEL	TIN
190850008	RZ-S-4129-08	#8 = .173/(4.39)	STEEL	TIN
190850009	RZ-S-4129-10	#10 = .198/(5.03)	STEEL	TIN



SALES DRAWING

- NOTES:
- MATERIAL: SEE CHART.
 - PLATING: SEE CHART.
 - WIRE RANGE: 18-14 AWG/1.3-2.6 MM.²
 - (A1)** PARTS ARE ROHS COMPLIANT.

THIS DRAWING CONTAINS INFORMATION THAT IS PROPRIETARY TO MOLEX ELECTRONIC TECHNOLOGIES, LLC AND SHOULD NOT BE USED WITHOUT WRITTEN PERMISSION									
DIMENSION UNITS IN/MM		SCALE NTS		CURRENT REV DESC: OBSOLETE PART NO				molex	
GENERAL TOLERANCES (UNLESS SPECIFIED)				EC NO: 628886					
4 PLACES ±		MM		INCH		DRWN: VLOKESHA 2019/10/09		VIBRAKRIMP STRIP RING TONGUE TERMINAL 18-14 AWG	
3 PLACES ±						CHK'D: GGA 2020/01/13			
2 PLACES ±						APPR: GGA 2020/01/13		PRODUCT CUSTOMER DRAWING	
1 PLACE ±						INITIAL REVISION:		DOCUMENT NUMBER	
0 PLACES ±						DRWN: BRE 2002/02/04		SD-19085-002	
ANGULAR TOL ± °						APPR:		DOC TYPE DOC PART REVISION	
DRAFT WHERE APPLICABLE MUST REMAIN WITHIN DIMENSIONS		THIRD ANGLE PROJECTION		DRAWING		SERIES		MATERIAL NUMBER	
		B-SIZE		19085		SEE CHART		CUSTOMER	
						GENERAL MARKET		SHEET NUMBER	
								1 OF 1	