

Control cabinet feed-through - VS-BH-M12FSX-10G-RJ45/90 - 1404548

Please be informed that the data shown in this PDF Document is generated from our Online Catalog. Please find the complete data in the user's documentation. Our General Terms of Use for Downloads are valid (<http://download.phoenixcontact.com>)



Control cabinet feed-through, M12, 8-pos., X-encoded to RJ45 socket, socket input 90°, IP65/67



Ethernet

Key commercial data

Packing unit	0
Minimum order quantity	1
GTIN	 4 046356 699419
Custom tariff number	85366990
Country of origin	GERMANY

Technical data

Mechanical characteristics

Number of positions	8
Insertion/withdrawal cycles	≥ 100
Cable exit	angled
Color	black
Ambient temperature (operation)	-25 °C ... 85 °C

Material data

Inflammability class according to UL 94	V0
Housing material	PA
Contact material	Copper alloy
Degree of protection	IP65/67

Electrical characteristics

Number of positions	8
Nominal voltage U_N	60 V

Control cabinet feed-through - VS-BH-M12FSX-10G-RJ45/90 - 1404548

Technical data

Electrical characteristics

Nominal current I_N	0.5 A
Transmission characteristics (category)	CAT6 _A
Rated current	1 A

Classifications

ETIM

ETIM 4.0	EC001121
ETIM 5.0	EC002641

UNSPSC

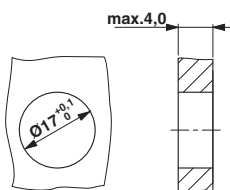
UNSPSC 11	31261501
UNSPSC 12.01	31261501
UNSPSC 13.2	31261501
UNSPSC 6.01	31261501
UNSPSC 7.0901	31261501

eCl@ss

eCl@ss 4.0	272607xx
eCl@ss 4.1	27260701
eCl@ss 5.0	27260701
eCl@ss 5.1	27260701
eCl@ss 6.0	27279220
eCl@ss 7.0	27440103

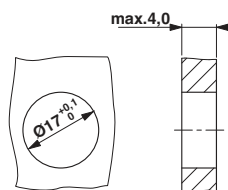
Drawings

Dimensioned drawing



Panel cutout

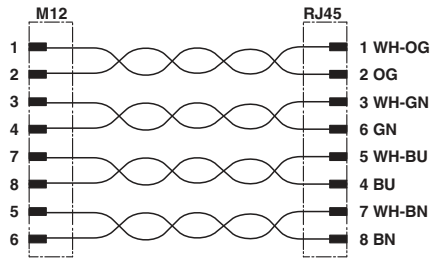
Dimensioned drawing



Panel cutout

Control cabinet feed-through - VS-BH-M12FSX-10G-RJ45/90 - 1404548

Circuit diagram



© Phoenix Contact 2012 - all rights reserved
<http://www.phoenixcontact.com>