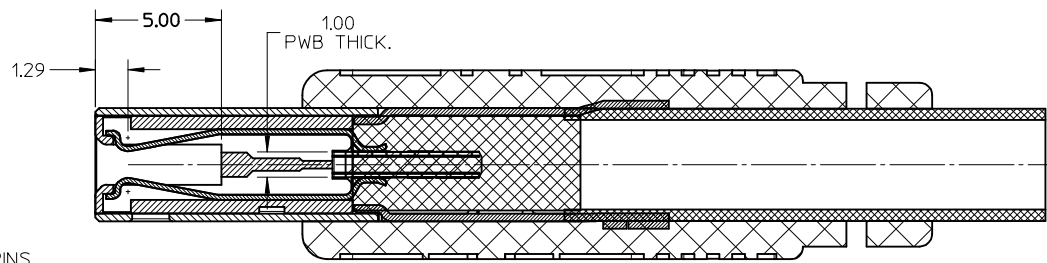
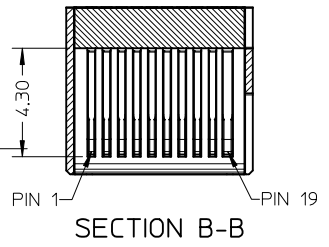


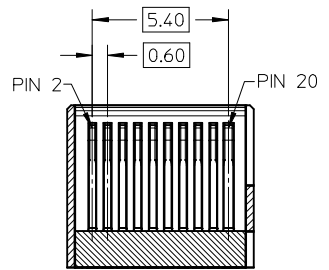
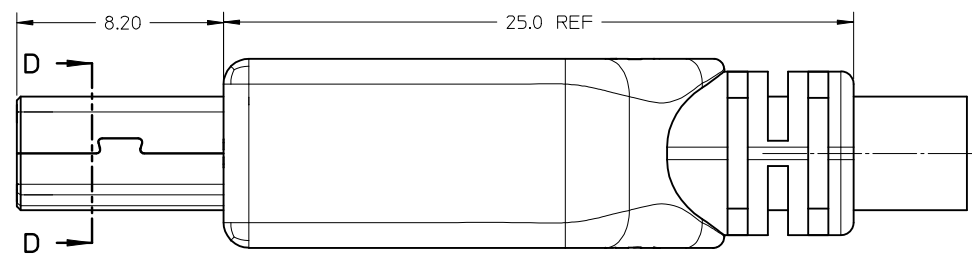
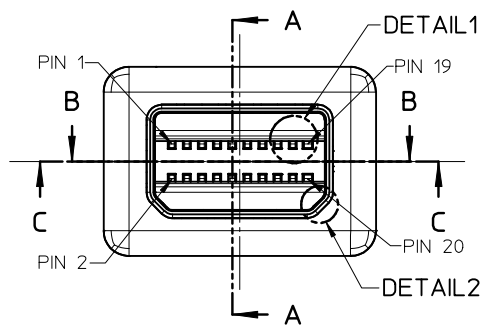
DETAIL1



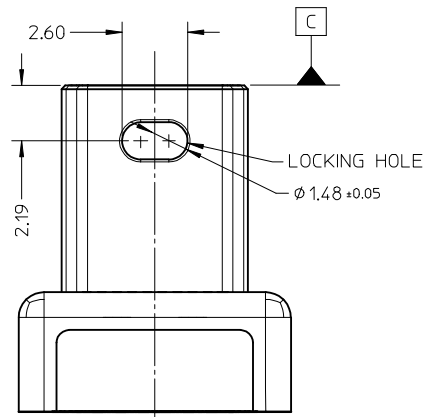
SECTION A-A



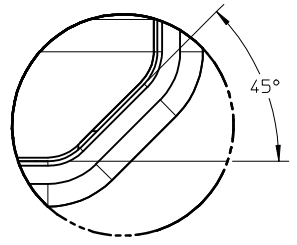
SECTION B-B



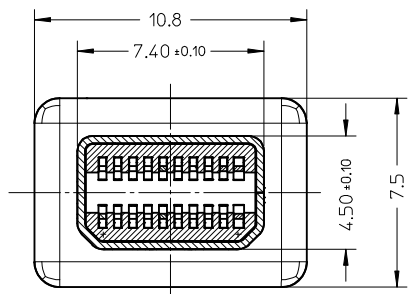
SECTION C-C



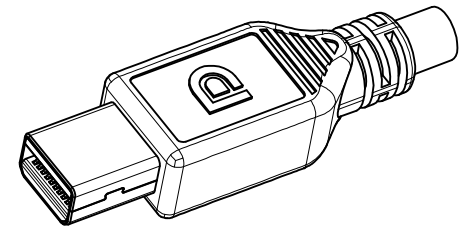
BOTTOM VIEW



DETAIL2



SECTION D-D

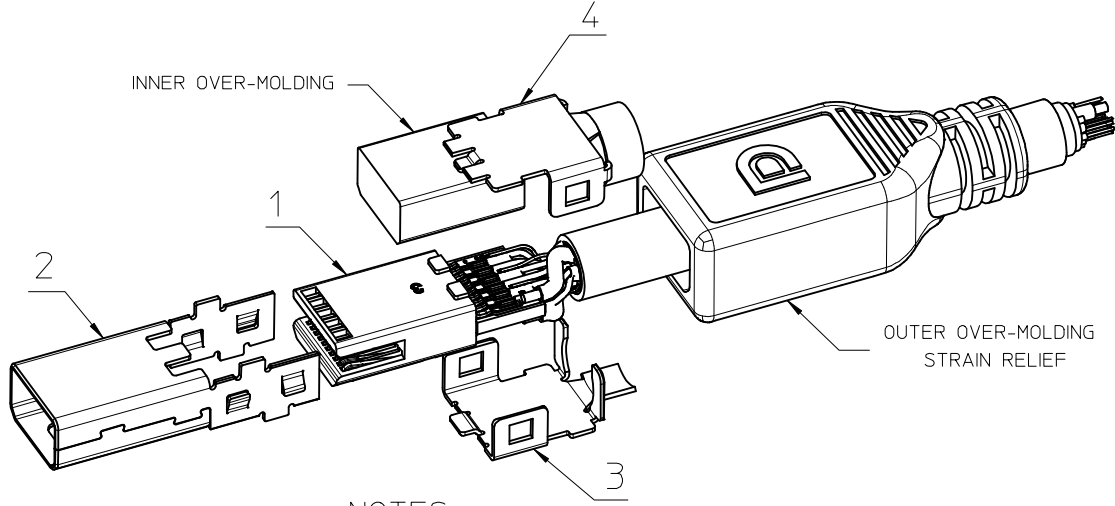


<b>NEW PRODUCT</b> EC NO: SH2010-0088 DRW:KWEI 2009/09/14 CHKD:RZHANG 2009/09/14 APPR:XJ.SONG 2009/09/14	QUALITY SYMBOLS ▽=0 ◻=0	GENERAL TOLERANCES (UNLESS SPECIFIED)		DIMENSION STYLE <b>MM ONLY</b>		SCALE <b>5:1</b>	DESIGN UNITS <b>METRIC</b>	THIRD ANGLE PROJECTION	
		4 PLACES ± --- ± --- 3 PLACES ± --- ± --- 2 PLACES ± 0.25 ± --- 1 PLACE ± 0.30 ± ---	mm INCH ± --- ± --- ± 0.25 ± --- ± 0.30 ± ---	DRAWN BY KLAUS WEI	DATE 2008/03/31	TITLE <b>MINI DISPLAY PORT PLUG</b>			
		ANGULAR ± -- °		CHECKED BY ROST ZHANG	DATE 2008/03/31	MOLEX INCORPORATED			
		DRAFT WHERE APPLICABLE MUST REMAIN WITHIN DIMENSIONS		APPROVED BY HARVEY WANG	DATE 2008/03/31	MATERIAL NO. SEE SHEET 2	DOCUMENT NO. SD-105061-200	SHEET NO. 1 OF 7	

TOP ROW			BOTTOM ROW		
PIN NUMBER	SIGNAL TYPE	PIN NAME	PIN NUMBER	SIGNAL TYPE	PIN NAME
1	GND	GND	2	IN	HOT PLUG DETECT
3	OUT	ML_LANE 0(p)	4	CONFIG	CONFIG 1
5	OUT	ML_LANE 0(n)	6	CONFIG	CONFIG 2
7	GND	GND	8	GND	GND
9	OUT	ML_LANE 1(p)	10	OUT	ML_LANE 3(p)
11	OUT	ML_LANE 1(n)	12	OUT	ML_LANE 3(n)
13	GND	GND	14	GND	GND
15	OUT	ML_LANE 2(p)	16	I/O	AUX_CH(p)
17	OUT	ML_LANE 2(n)	18	I/O	AUX_CH(n)
19	RTN	RETURN	20	POWER OUT	DP_PWR

ITEM	PART NAME	PART NUMBER	QTY'S
1	SUB-ASSEMBLY	WHITE	1
		BLACK	
2	MAIN-SHELL	105061-0005	1
3	BOTTOM SHELL	105061-0006	1
4	TOP-SHELL	105061-0007	1

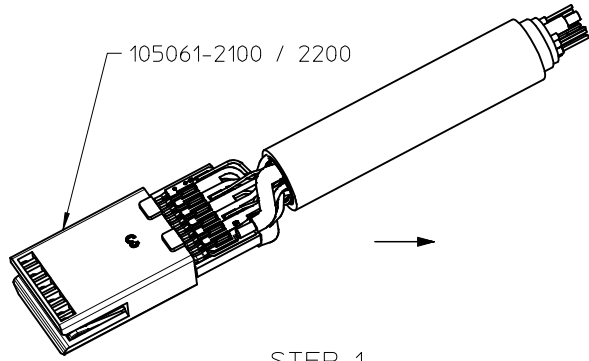
- NOTES:
- MATERIAL:
    - 1.1. PLASTIC: HIGH TEMPERATURE THERMOPLASTICS.
    - 1.2. TERMINAL: PHOSPHOR BRONZE.
    - 1.3. SHIELD SHELL: COPPER ALLOY.
    - 1.4. OTHER SHELL: COPPER ALLOY.
  - PLATING:
    - 2.1. TERMINAL:
      - 2.1.1. UNDERPLATING: NICKEL 1.30 MICROMETER MIN.
      - 2.1.2. CONTACT AREA: GOLD 0.76 MICROMETER MIN.
      - 2.1.3. SOLDER AREA: GOLD FLASH.
    - 2.2. METAL SHELL: NICKEL 1.30 MICROMETER MIN.
  - MECHANICAL PROPERTIES:
    - 3.1. TERMINAL RETENTION FORCE: 0.5 Kgf MIN.
    - 3.2. MATING FORCE: 4.0 Kgf MAX.
    - 3.3. NORMAL FORCE: 25gf MIN.
    - 3.4. DURABILITY: 1500 CYCLES.
  - ELECTRICAL PROPERTIES:
    - 4.1. APPLIED VOLTAGE RATING: 30V AC (RMS)
    - 4.2. CONTACT CURRENT RATING: 0.5 Amp
    - 4.3. DIELECTRIC WITHSTANDING: 200V AC MIN.
    - 4.4. INSULATION RESISTANCE: 100 Megaohm MIN.
  - ENVIRONMENTAL PROPERTIES:
    - 5.1. OPERATING TEMPERATURE: -20°C TO 85°C.
    - 5.2. BE APPLICABLE TO HANDWORK SOLDER & IR-REFLOW PROCESS
  - THIS PRODUCT COMPLIANT TO RoHS DIRECTIVE 2002/95/EC, AND ELV DIRECTIVE 2000/53/EC.



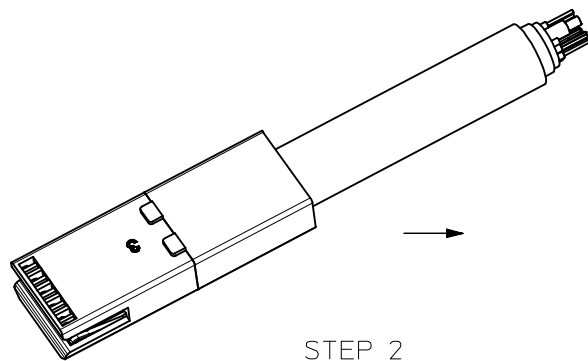
NOTES:  
OVER-MOLDING ONLY FOR REFERENCE

<b>NEW PRODUCT</b> EC NO: SH2010-0088 DRW:KWEI 2009/09/14 CHK:RZHANG 2009/09/14 APPR:XJ.SONG 2009/09/21	QUALITY SYMBOLS  	GENERAL TOLERANCES (UNLESS SPECIFIED)		DIMENSION STYLE	SCALE	DESIGN UNITS	THIRD ANGLE PROJECTION	
				MM ONLY	N/A	METRIC		
		mm	INCH	DRAWN BY	DATE	TITLE		
		4 PLACES ±---	±---	KLAUS WEI	2008/03/31	MINI DISPLAY PORT PLUG		
3 PLACES ±---	±---	CHECKED BY	DATE	MOLEX INCORPORATED				
2 PLACES ±---	±---	ROST ZHANG	2008/03/31					
1 PLACE ±---	±---	APPROVED BY	DATE	DOCUMENT NO. SD-105061-200 SHEET NO. 2 OF 7				
ANGULAR ±---°		HARVEY WANG	2008/03/31					
DRAFT WHERE APPLICABLE MUST REMAIN WITHIN DIMENSIONS		MATERIAL NO.		SEE TABLE				
		SIZE		THIS DRAWING CONTAINS INFORMATION THAT IS PROPRIETARY TO MOLEX INCORPORATED AND SHOULD NOT BE USED WITHOUT WRITTEN PERMISSION				

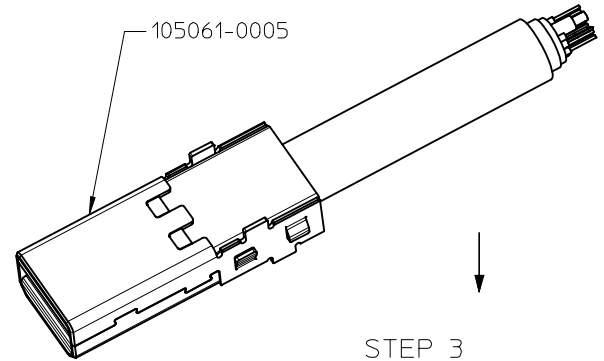
# ASSEMBLY PROCEDURE



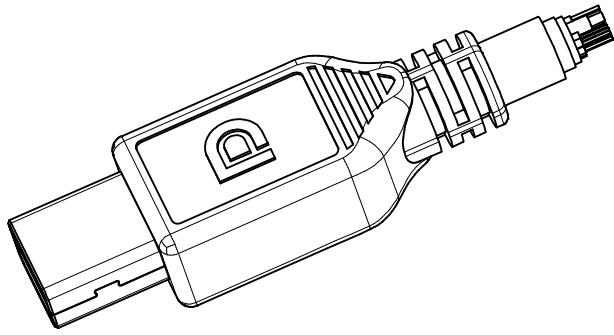
STEP 1  
SOLDER WIRE



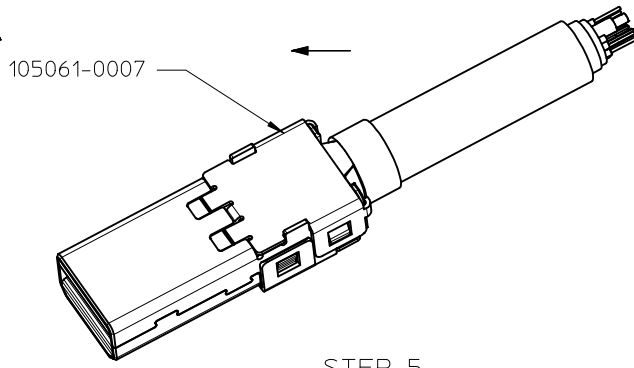
STEP 2  
INNER OVER-MOLDING



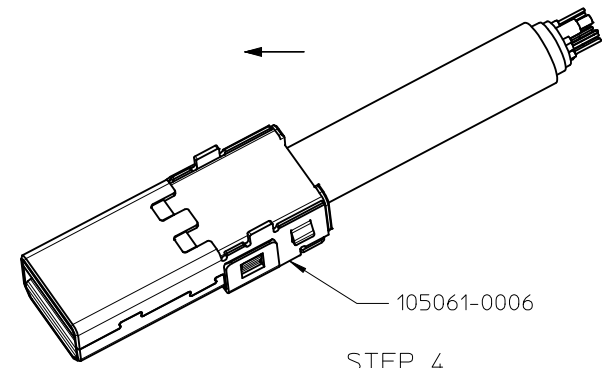
STEP 3  
ASSEMBLE MAIN SHELL



STEP 6  
OUTER OVER-MOLDING

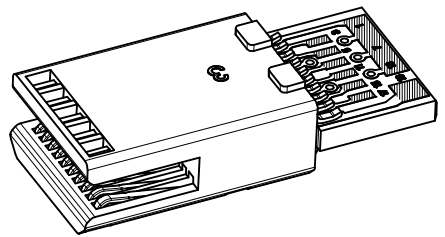
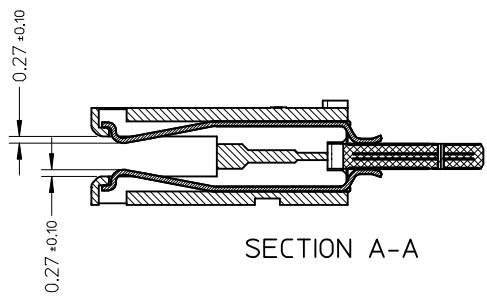
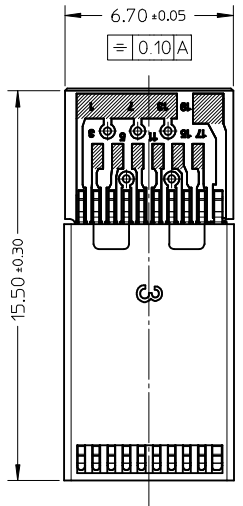


STEP 5  
ASSEMBLE TOP SHELL AND CRIMPING

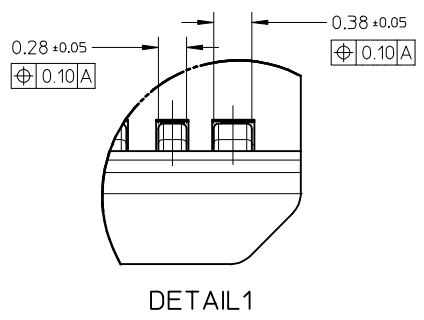
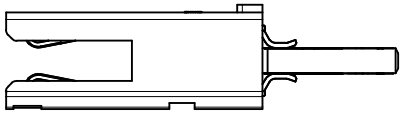
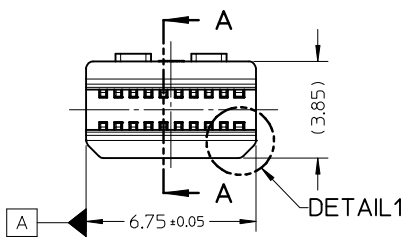


STEP 4  
ASSEMBLE BOTTOM SHELL

<b>NEW PRODUCT</b> IEC NO: SH2010-0088 DRW:KWCWEI 2009/09/14 CH:KDRZHANG 2009/09/14 APPR:XJ.SONG 2009/09/21	QUALITY SYMBOLS ▽=0 ◻=0	GENERAL TOLERANCES (UNLESS SPECIFIED)		DIMENSION STYLE <b>MM ONLY</b>	SCALE N/A	DESIGN UNITS METRIC	THIRD ANGLE PROJECTION	
		4 PLACES ±--- ±--- 3 PLACES ±--- ±--- 2 PLACES ±--- ±--- 1 PLACE ±--- ±---	mm INCH	DRAWN BY DATE KLAUS WEI 2008/03/31	TITLE <b>MINI DISPLAY PORT PLUG</b>			
		ANGULAR ±---°		CHECKED BY DATE ROST ZHANG 2008/03/31	MOLEX INCORPORATED			
		DRAFT WHERE APPLICABLE MUST REMAIN WITHIN DIMENSIONS		APPROVED BY DATE HARVEY WANG 2008/03/31	MATERIAL NO. SEE ABOVE	DOCUMENT NO. SD-105061-200	SHEET NO. 3 OF 7	THIS DRAWING CONTAINS INFORMATION THAT IS PROPRIETARY TO MOLEX INCORPORATED AND SHOULD NOT BE USED WITHOUT WRITTEN PERMISSION



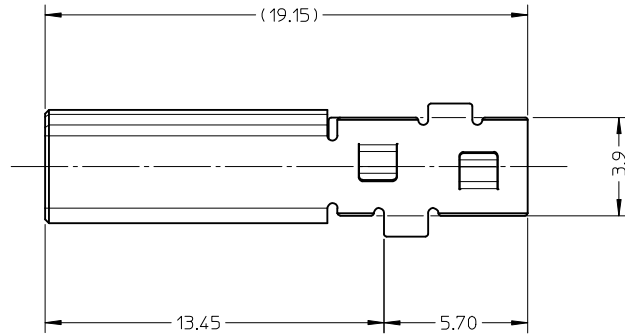
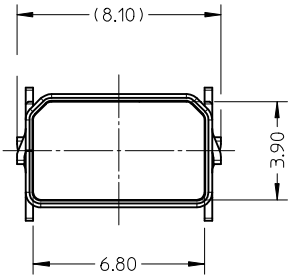
- NOTES:
- MATERIAL:  
PLASTIC: LCP ,UL94V-0 .  
METAL: COPPER OR COPPER ALLOY.
  - PACKAGING SPECIFICATION : PK-105061-001.
  - PRODUCT SPECIFICATION: PS-105061-001.



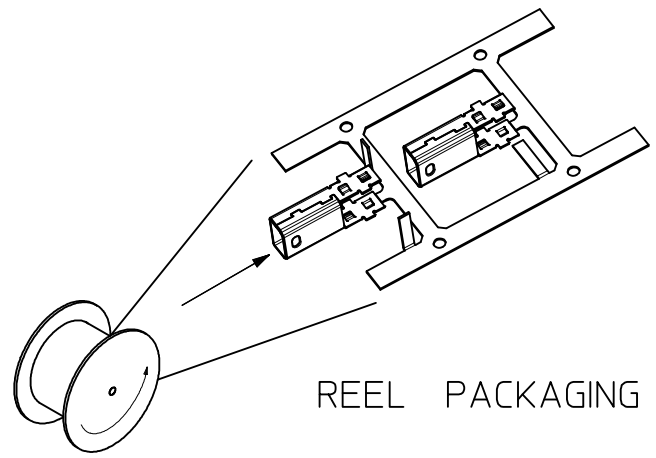
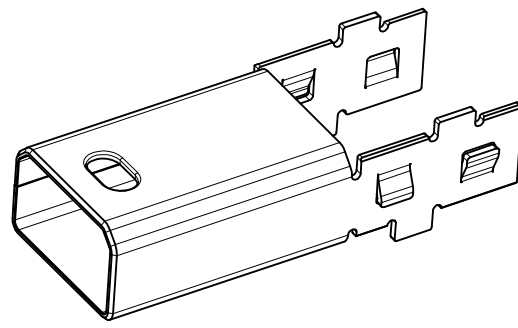
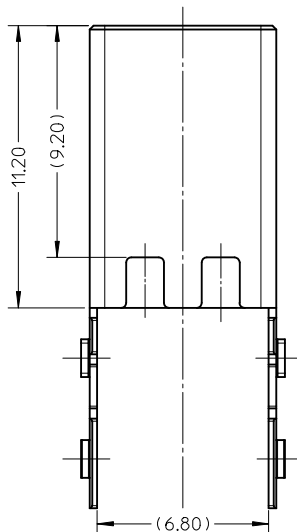
105061-2200	LCP	WHITE
105061-2100	LCP	BLACK
PART NUMBER	RESIN TYPE	COLOR

<b>NEW PRODUCT</b> EC NO: SH2010-0088 DRW:KWEI CH:KDRZHANG APPR:XJ.SONG	2009/09/14 2009/09/14 2009/09/21	DESCRIPTION REV	QUALITY SYMBOLS ▽=0 ◻=0	GENERAL TOLERANCES (UNLESS SPECIFIED)		DIMENSION STYLE MM ONLY		SCALE 5:1	DESIGN UNITS METRIC	THIRD ANGLE PROJECTION		
					mm	INCH	DRAWN BY KLAUS WEI	DATE 2008/03/31	TITLE SUB-ASSEMBLY			
				4 PLACES	± ---	± ---	CHECKED BY ROST ZHANG	DATE 2008/03/31	MOLEX INCORPORATED DOCUMENT NO. SD-105061-200 SHEET NO. 4 OF 7			
				3 PLACES	± ---	± ---	APPROVED BY HARVEY WANG	DATE 2008/03/31				
2 PLACES	± 0.10	± ---	ANGULAR ± ---°		105061-2*00		THIS DRAWING CONTAINS INFORMATION THAT IS PROPRIETARY TO MOLEX INCORPORATED AND SHOULD NOT BE USED WITHOUT WRITTEN PERMISSION					
1 PLACE	± 0.15	± ---	DRAFT WHERE APPLICABLE MUST REMAIN WITHIN DIMENSIONS		SIZE A3							

10 9 8 7 6 5 4 3 2 1



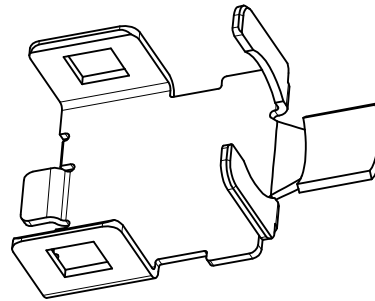
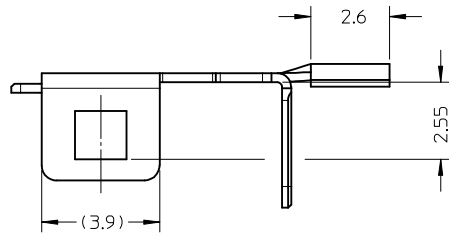
- NOTES:
1. MATERIALS: COPPER ALLOY  
THICKNESS: 0.30±0.01mm..
  2. FINISH: NICKEL 1.30 MICROMETRE MIN.
  3. COMPLIANT TO RoHS DIRECTIVE 2002/95/EC AND ELV DIRECTIVE 2000/53/EC.
  4. PACKAGING QUANTITIES : 800 PCS PER REEL.



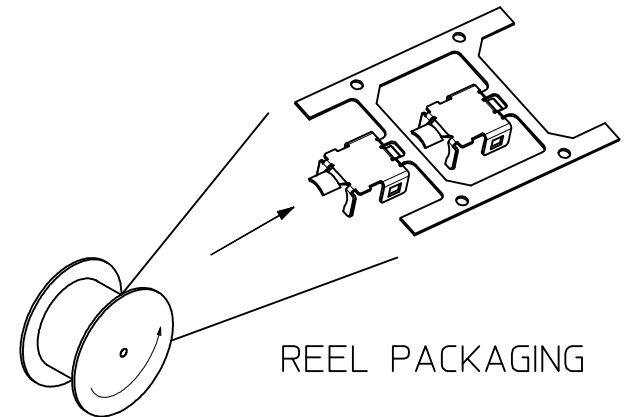
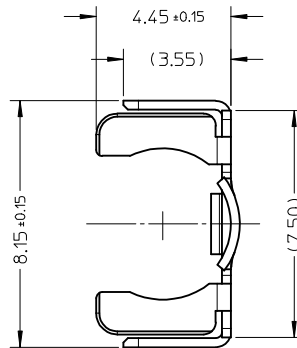
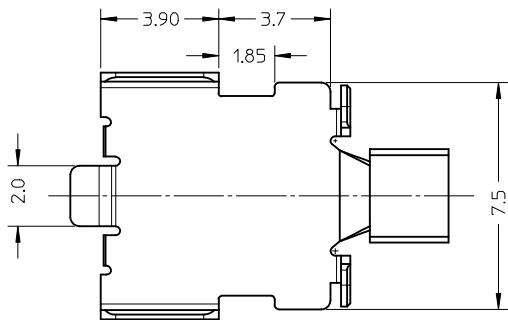
REEL PACKAGING

<b>NEW PRODUCT</b> EC NO: SH2010-0088 DRW:KWEI 2009/09/14 CHKD:RZHANG 2009/09/14 APPR:XJ.SONG 2009/09/21	QUALITY SYMBOLS ▽=0 ◻=0	GENERAL TOLERANCES (UNLESS SPECIFIED)		DIMENSION STYLE <b>MM ONLY</b>	SCALE <b>5:1</b>	DESIGN UNITS <b>METRIC</b>	THIRD ANGLE PROJECTION																		
		<table border="1"> <tr> <td></td> <td>mm</td> <td>INCH</td> </tr> <tr> <td>4 PLACES</td> <td>±---</td> <td>±---</td> </tr> <tr> <td>3 PLACES</td> <td>±---</td> <td>±---</td> </tr> <tr> <td>2 PLACES</td> <td>±0.10</td> <td>±---</td> </tr> <tr> <td>1 PLACE</td> <td>±0.15</td> <td>±---</td> </tr> <tr> <td colspan="3">ANGULAR ±---°</td> </tr> </table>		mm	INCH	4 PLACES	±---	±---	3 PLACES	±---	±---	2 PLACES	±0.10	±---	1 PLACE	±0.15	±---	ANGULAR ±---°			DRAWN BY: KLAUS WEI CHECKED BY: ROST ZHANG APPROVED BY: HARVEY WANG	DATE: 2008/03/31 DATE: 2008/03/31 DATE: 2008/03/31	TITLE <b>MAIN SHELL</b>		
		mm	INCH																						
	4 PLACES	±---	±---																						
3 PLACES	±---	±---																							
2 PLACES	±0.10	±---																							
1 PLACE	±0.15	±---																							
ANGULAR ±---°																									
	DRAFT WHERE APPLICABLE MUST REMAIN WITHIN DIMENSIONS			MATERIAL NO. <b>105061-0005</b>	DOCUMENT NO. <b>SD-105061-200</b>		SHEET NO. <b>5 OF 7</b>																		
				SIZE <b>A3</b>	THIS DRAWING CONTAINS INFORMATION THAT IS PROPRIETARY TO MOLEX INCORPORATED AND SHOULD NOT BE USED WITHOUT WRITTEN PERMISSION																				

9 8 7 6 5 4 3 2 1

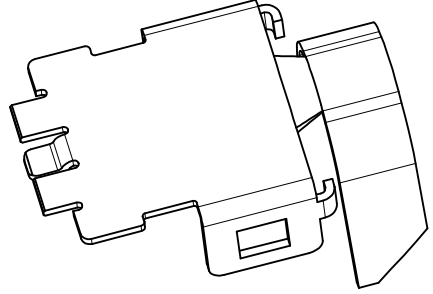
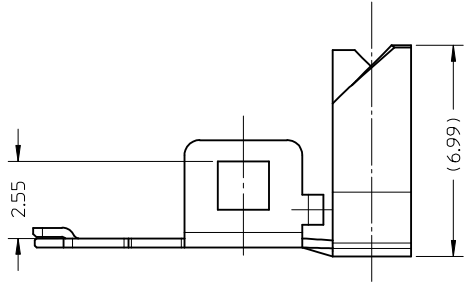


- NOTES:
1. MATERIALS: COPPER ALLOY.  
THICKNESS: 0.30±0.01mm.
  2. FINISH: NICKEL 1.30 MICROMETRE MIN.
  3. COMPLIANT TO RoHS DIRECTIVE 2002/95/EC AND ELV DIRECTIVE 2000/53/EC.
  4. PACKAGING QUANTITIES : 1500 PCS PER REEL.

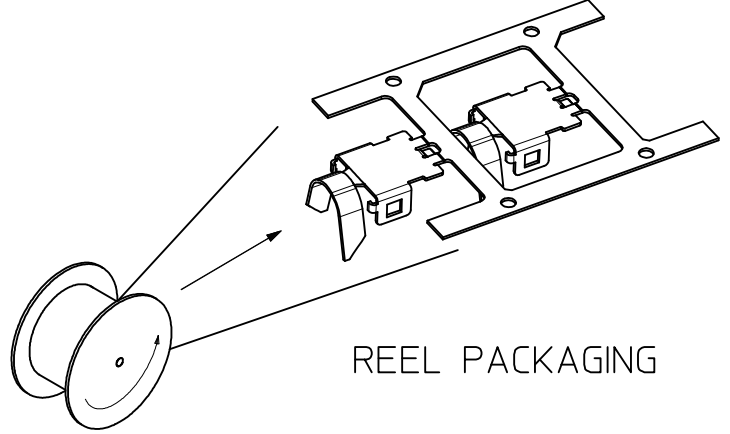
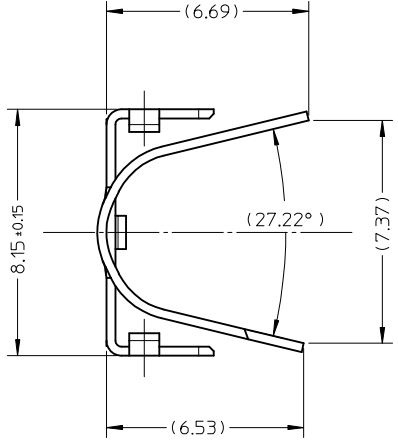
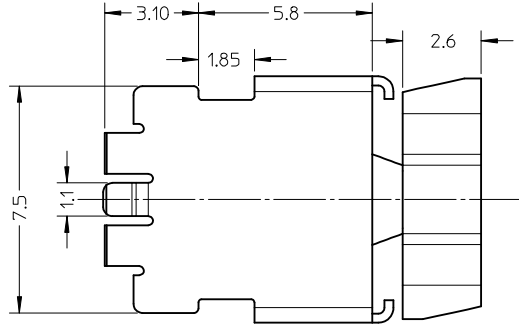


REEL PACKAGING

<b>NEW PRODUCT</b> EC NO: SH2010-0088 DRW:KWEI 2009/09/14 CHK:RZHANG 2009/09/14 APPR:XJ.SONG 2009/09/21	QUALITY SYMBOLS ▽=0 ◻=0	GENERAL TOLERANCES (UNLESS SPECIFIED)		DIMENSION STYLE <b>MM ONLY</b>	SCALE <b>5:1</b>	DESIGN UNITS <b>METRIC</b>	THIRD ANGLE PROJECTION		
		4 PLACES ± --- ± ---	3 PLACES ± --- ± ---	2 PLACES ± 0.10 ± ---	1 PLACE ± 0.15 ± ---	ANGULAR ± ---°	TITLE <b>BOTTOM SHELL</b>		
		DRAFT WHERE APPLICABLE MUST REMAIN WITHIN DIMENSIONS		MATERIAL NO. <b>105061-0006</b>	MOLEX INCORPORATED		DOCUMENT NO. <b>SD-105061-200</b>	SHEET NO. <b>6 OF 7</b>	
		THIS DRAWING CONTAINS INFORMATION THAT IS PROPRIETARY TO MOLEX INCORPORATED AND SHOULD NOT BE USED WITHOUT WRITTEN PERMISSION							



- NOTES:
1. MATERIALS: COPPER ALLOY.  
THICKNESS: 0.30±0.01mm.
  2. FINISH: NICKEL 1.30 MICROMETRE MIN.
  3. COMPLIANT TO RoHS DIRECTIVE 2002/95/EC AND ELV DIRECTIVE 2000/53/EC.
  4. PACKAGING QUANTITIES : 1500 PCS PER REEL.



REEL PACKAGING

<b>NEW PRODUCT</b> EC NO: SH2010-0088 DRW:KWEI 2009/09/14 CHKD:RZHANG 2009/09/14 APPR:XJ.SONG 2009/09/21	QUALITY SYMBOLS ▽=0 ◻=0	GENERAL TOLERANCES (UNLESS SPECIFIED) mm INCH 4 PLACES ± --- ± --- 3 PLACES ± --- ± --- 2 PLACES ± 0.10 ± --- 1 PLACE ± 0.15 ± --- ANGULAR ± ---°	DIMENSION STYLE <b>MM ONLY</b>	SCALE <b>5:1</b>	DESIGN UNITS <b>METRIC</b>	THIRD ANGLE PROJECTION	
	DRAWN BY: KLAUS WEI CHECKED BY: ROST ZHANG APPROVED BY: HARVEY WANG	DATE: 2008/03/31 DATE: 2008/03/31 DATE: 2008/03/31	TITLE <b>TOP SHELL</b>				
	MATERIAL NO. <b>105061-0007</b>	DOCUMENT NO. <b>SD-105061-200</b>	SHEET NO. <b>7 OF 7</b>				
	DRAFT WHERE APPLICABLE MUST REMAIN WITHIN DIMENSIONS						