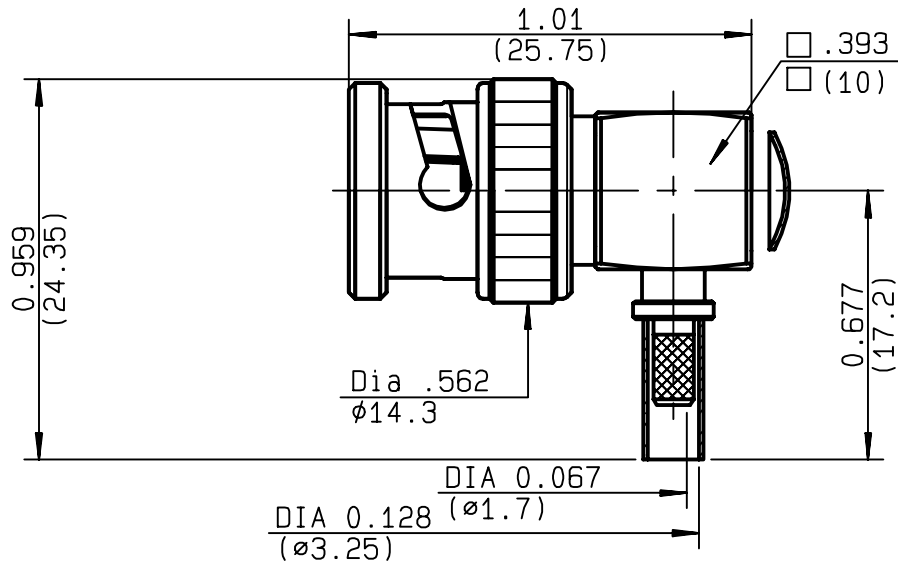


**RIGHT ANGLE PLUG CRIMP TYPE
CABLE 2.6/50 S - PACK 100**

R141.181.161
SERIES BNC-COM



NOMINAL IMPEDANCE	50 Ω	CABLES : KX 22A
FREQUENCY RANGE	0-1.5 GHz	RG 188
TEMPERATURE RATING	-35/+70 °C	RG 316
V.S.W.R	1.35 + x F(GHz)Maxi	
RF INSERTION LOSS	0.175 √F(GHz) dB Maxi	
VOLTAGE RATING	500 Veff Maxi	
DIELECTRIC WITHSTANDING VOLTAGE	1500 Veff Mini	
INSULATION RESISTANCE	5000 MΩMini	OTHERS CHARACTERISTICS
HERMETIC SEAL	NA Atm.cm ³ /s	CABLE RETENTION
LEAKAGE (pressurized only)	NA	40 N Mini
MECHANICAL DURABILITY	100 Cycles	CENTER CONTACT RETENTION
WEIGHT	13.5 gr	Axial force - mating end
SPECIFICATION		15 N Mini
		Axial force - opposite end
		15 N Mini
		Torque
		NA cm.N Mini
		RECOMMENDED TORQUES
		Mating
		NA cm.N
		Panel nut
		NA cm.N
		Clamp nut
		NA cm.N

CONNECTOR PARTS:	MATERIALS	FINISH	(all values are given) in micrometers
BODY	BRASS	NICKEL 2	
OUTER CONTACT			
CENTER CONTACT	BRASS	GOLD 0.2 OVER NICKEL 2	
INSULATOR	WHITE POLYPROPYLENE	-	
GASKET	SILICONE RUBBER	-	
OTHERS PIECES			

ISSUE	CREATION DATE	FILE PART-NUMBER
9910B01	31/05/1990	90-1200-030



LELEU

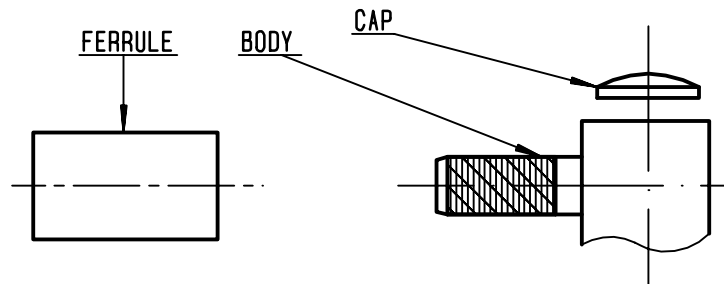
The information given here is subject to change without notice.
Design changes may be in order to improve the product .

Connect to the future



R141.181.161

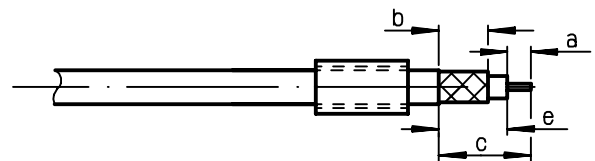
ISSUE **9910B01** SERIES **BNC-COM**



①

Slide onto the cable the ferrule .
Strip the cable .

-
-

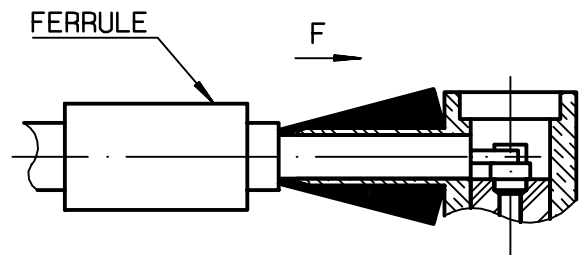


Stripping	a	b	c	d	e
inch	0.098	0.256	0.63	0	0.531
mm	2.5	6.5	16		13.5

②

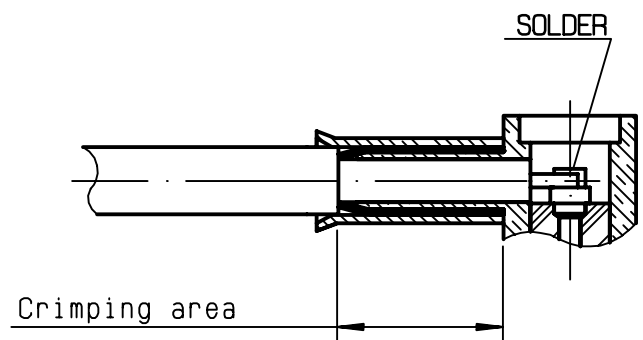
Fan the braid .
Push connector body under the braid .
Slide the ferrule on the braid
(in direction F)

-
-



③

Crimp the ferrule with crimping tool
R282 211 000 (Hex. : .128) or
crimping tool R 282 293 000 (M22520/5-01)
+ dies R 282 235 003 (M22520/5-03)
Solder inner conductor .



④

Place the cap .
Press cap flush or slightly below surface
of body assembly .

-
-
-
-
-

