



ANATECH ELECTRONICS INC
RF & Microwave Filters & Products

1500 MHz Ceramic Bandpass Filter

Part Number: AM1500B1603



Electrical specifications

Center Frequency (Fo): 1500 MHz
 -1 dB Bandwidth (BW) 100 MHz min
 Insertion loss (Fo): 1.5 dB max
 Ripple in BW: 1.0 dB max
 VSWR (BW): 2.0:1 min
 Attenuation 1: 90 dBc min@920 MHz
 Attenuation 2: 90 dBc min@1080 MHz
 In/Out impedance : 50 Ω

Mechanical

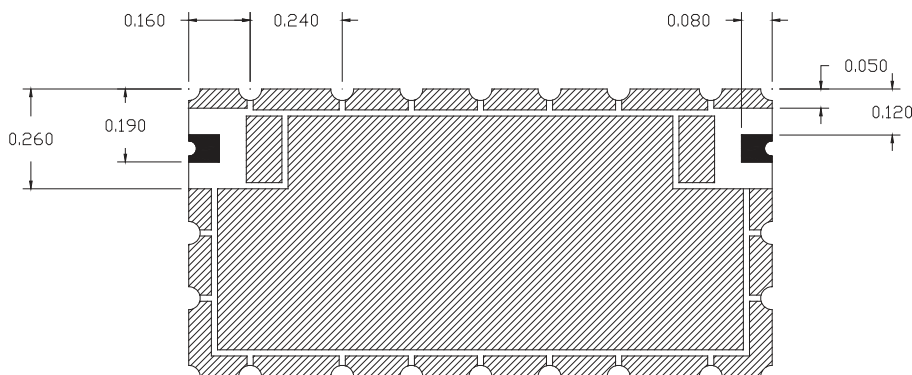
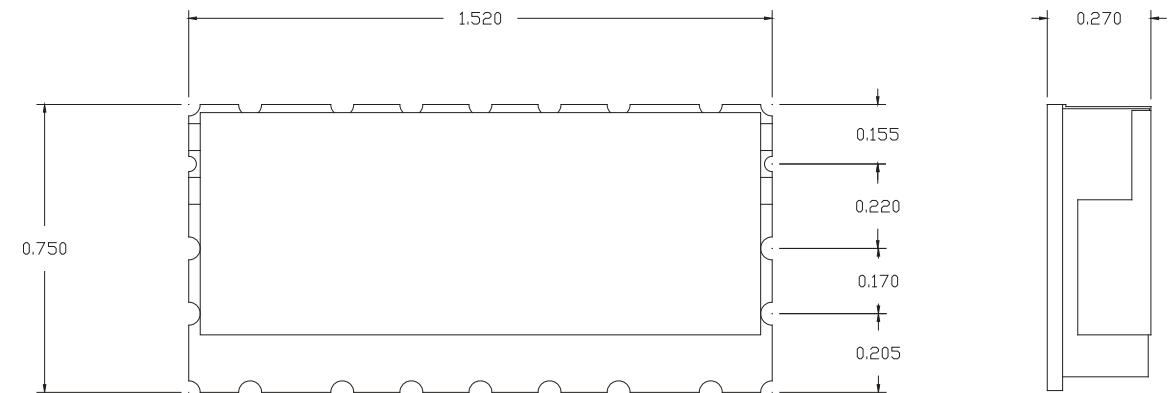
Mounting Method: SMT
 Dimensions: 1.52" X 0.75" X 0.27" in

Environmental

Operating Temperature: -55 to +70° C
 Storage Temperature: -55 to +95° C
 Shock: 20 G. 11ms
 Vibration: 20 G. 5 to 200 MHz

This product is RoHS compliant

Outline Drawing:



■ I/O PORT

▨ GROUND

UNIT : Inch

Tolerance: ±0.02 In.