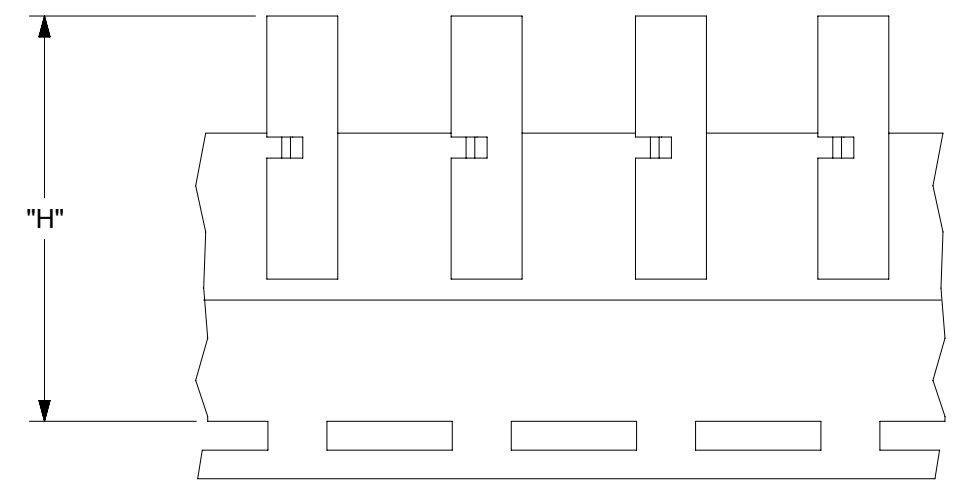
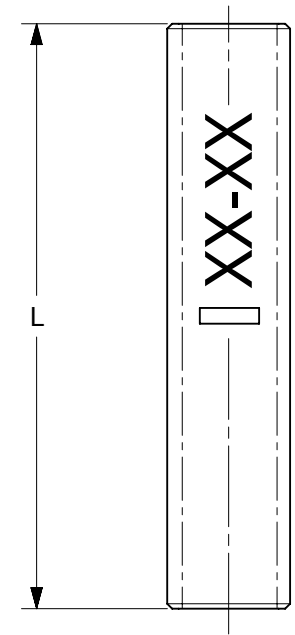
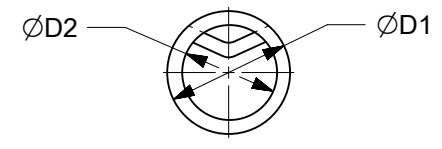


MATERIAL NO.	ENGINEERING NO.	D1 MAX	D2 MAX	L MAX	H NOMINAL	WIRE RANGE AWG	DESCRIPTION
192030384	19203-0384	.14/3.6	.05/1.2	.627/15.92	-----	22-18	LOOSE
192030385	19203-0385	.17/4.3	.07/1.9	.627/15.92	-----	16-14	LOOSE
192030386	C-S-146 (P)	.23/5.8	.12/3.0	.627/15.92	-----	12-10	LOOSE
192030523	19203-0523	.14/3.6	.05/1.2	.627/15.92	1.218/30.94	22-18	TAPE
192030479	19203-0479	.17/4.3	.07/1.9	.627/15.92	1.218/30.94	16-14	TAPE
192030480	19203-0480	.23/5.8	.12/3.0	.627/15.92	1.218/30.94	12-10	TAPE

(A2)



PARTS ON TAPE

NOTES:

1. MATERIAL: STEEL .031/0.80 THICK REF.
2. FINISH: NICKEL PLATED WITH OPTIONAL COPPER FLASH UNDERPLATING, IS ALLOWED FOR IMPROVED ADHESION.
3. PART IS ROHS COMPLIANT.

(A2)

THIS DRAWING CONTAINS INFORMATION THAT IS PROPRIETARY TO MOLEX ELECTRONIC TECHNOLOGIES, LLC AND SHOULD NOT BE USED WITHOUT WRITTEN PERMISSION										
FUNCTIONAL SYMBOLS	THIS DRAWING CONTAINS INFORMATION THAT IS PROPRIETARY TO MOLEX ELECTRONIC TECHNOLOGIES, LLC AND SHOULD NOT BE USED WITHOUT WRITTEN PERMISSION	SCALE		CURRENT REV DESC: REMASTERED IN ECTR AND UPDATED NOTE						
	IN/MM	1:1								
DIVISIONAL SYMBOLS	GENERAL TOLERANCES (UNLESS SPECIFIED)			EC NO: 708789						
		MM	INCH	DRWN: PAWANC 2022/05/10						
DIVISIONAL SYMBOLS	4 PLACES	±	±	CHKD: DMYRICK 2022/06/01						
	3 PLACES	±	±	APPR: JMACNEIL 2022/06/02						
	2 PLACES	±	±	INITIAL REVISION:						
	1 PLACE	±	±	DRWN: DMYRICK 2005/04/07						
	0 PLACES	±	±	APPR: RDEROSS 2005/04/07						
	ANGULAR TOL	±	°	DOCUMENT NUMBER						
	DRAFT WHERE APPLICABLE MUST REMAIN WITHIN DIMENSIONS	THIRD ANGLE PROJECTION		DRAWING	SERIES	MATERIAL NUMBER	CUSTOMER	DOC TYPE	DOC PART	REVISION
		B-SIZE		19203	SEE CHART	GENERAL MARKET	PSD	001	A2	1 OF 1