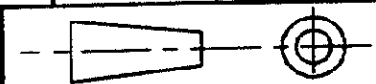
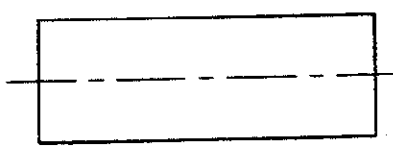
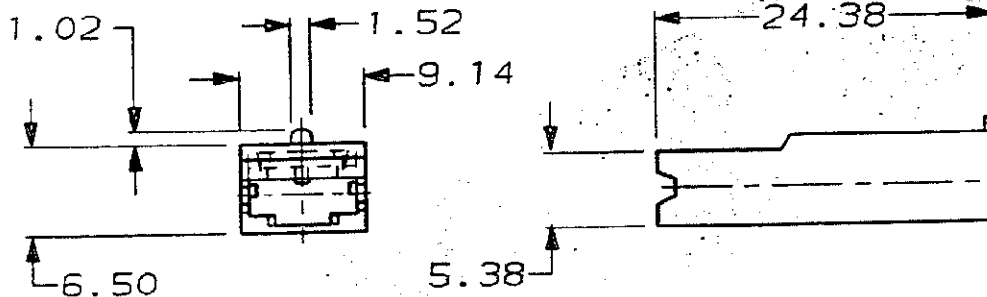


DO NOT SCALE

DIMENSIONS IN MM.



C.A.D. FILE CODE
S. C341300.4



NOTE:-

FOR APPLICATION SPEC. SEE 114-3003.

- ① OBSOLETE PARTS: OBSOLETE CIS STREAMLINING PER D.RENAUD/D.SINISI
- ② OBSOLETE PARTS

BLACK	NYLON 6.6 (FIRE RETARDENT)	① 341300-9
NATURAL	NYLON 6.6 (FIRE RETARDENT)	① 341300-0
BLACK	NYLON 6.6	341300-9
GREY	NYLON 6.6	341300-8
VIOLET	NYLON 6.6	341300-7
BLUE	NYLON 6.6	341300-6
GREEN	NYLON 6.6	341300-5
YELLOW	NYLON 6.6	② 341300-4
ORANGE	NYLON 6.6	341300-3
RED	NYLON 6.6	341300-2
BROWN	NYLON 6.6	341300-1
NATURAL	NYLON 6.6	341300-0

FINISH	MATERIAL	PART NUMBER
--------	----------	-------------

CUSTOMER DWG
FOR REFERENCE ONLY

© COPYRIGHT

RELEASED FOR PUBLICATION

A	TOLERANCES UNLESS OTHERWISE STATED: DEC ± 0.5 ANGLES ± 1°	DR. D.R. TERRY	6 FEB. 1992
		CH. D. BARRATT	APP. D. BARRATT
		TE TE Connectivity	

NAME
POSITIVE LOCK RECEPTACLE
MKII (.250) INSULATOR

D2	REVISED PER ECR-19-018127	14AUG20	SCALE	LOC	SIZE	DWG. No.	REV	SHEET
REV	APPROVED	DATE	2/1	E	A4	C341300	D2	1/1