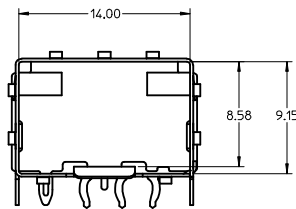
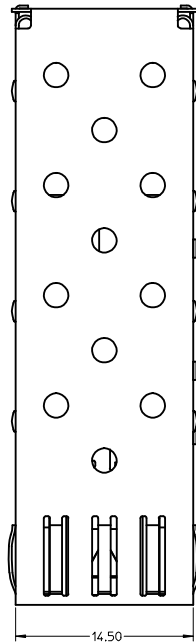
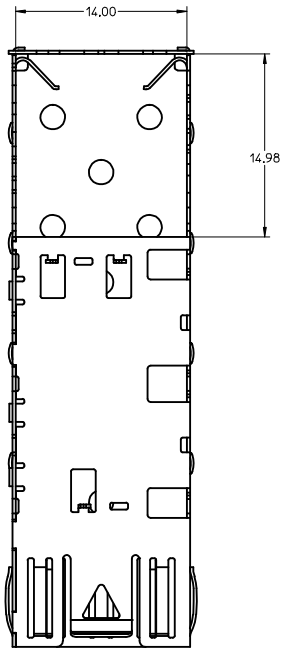
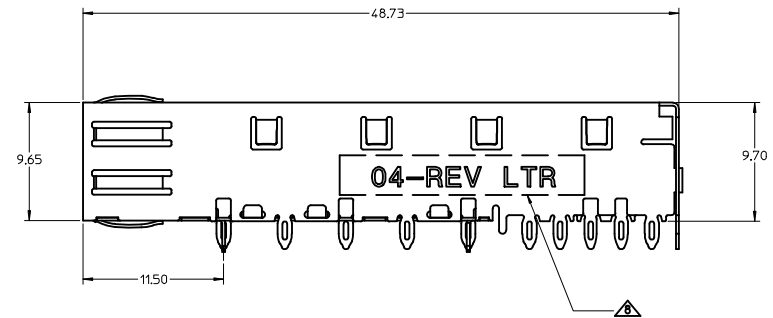
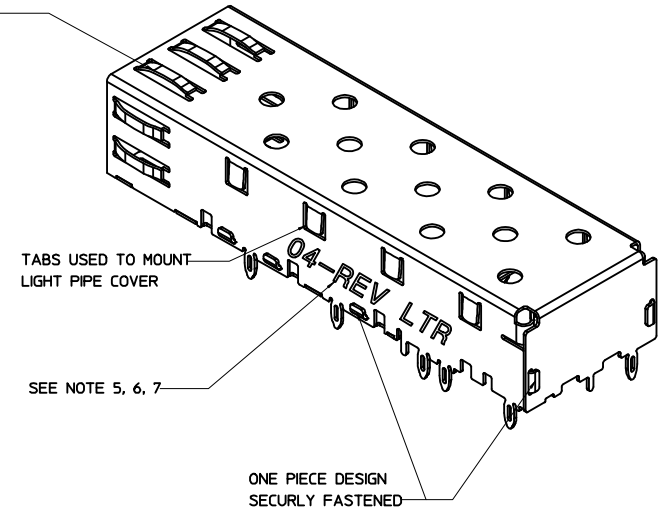


3D MODEL: EM-74737-004-ASSY



SPRING FINGER GASKET WITH TWO POINTS OF CONTACT. COMPLIES WITH (SFP) MSA BOARD AND BEZEL LOCATIONS.

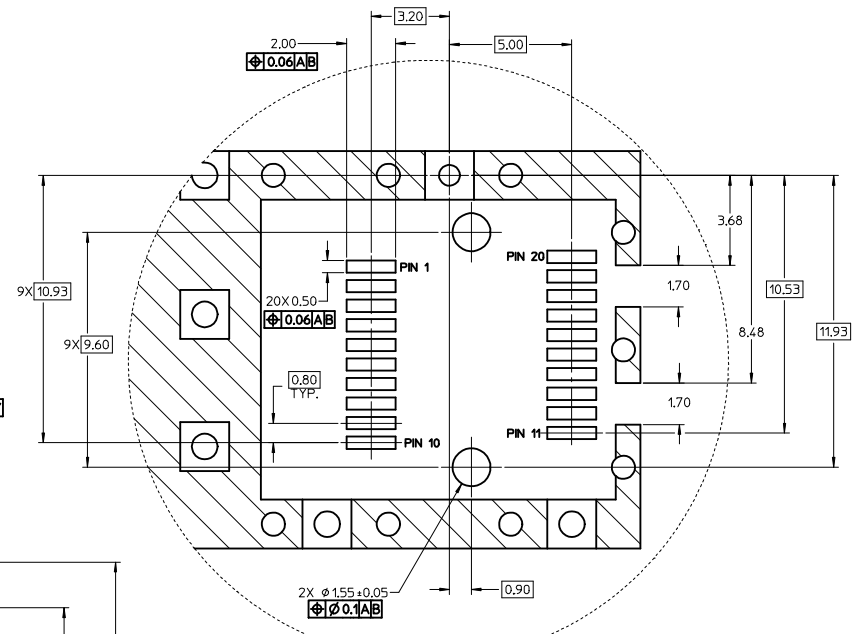
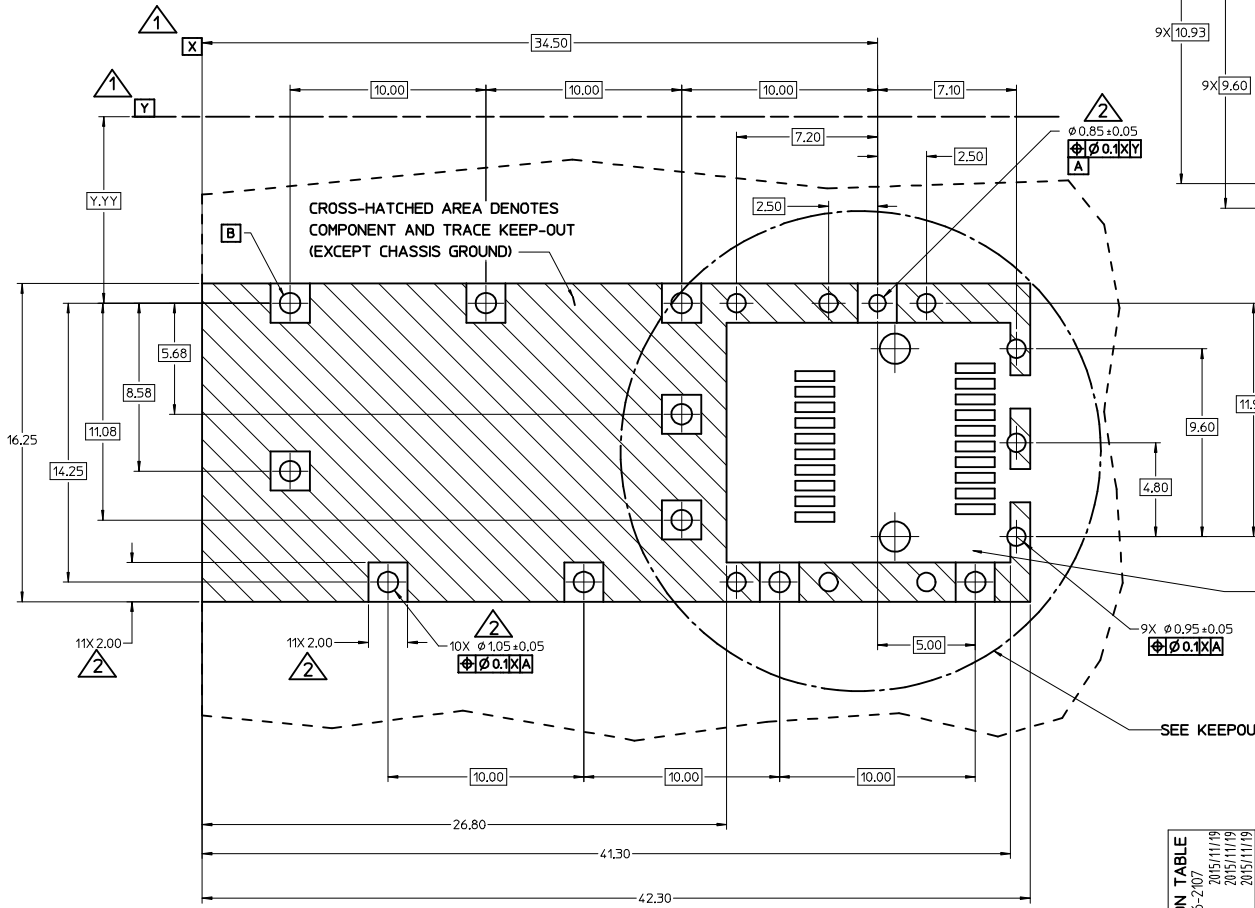


NOTES:

- PRESS FIT LEGS, 2.28mm LONG. 1.57mm MINIMUM PCB THICKNESS.
- CAN BE USED WITH THE FOLLOWING LIGHT PIPE PART NUMBERS:  
747260001 - LIGHT PIPE FROM BACK TO TOP (REFER TO DOCUMENT SD-74726-001)  
747260002 - LIGHT PIPE FROM SIDE TO TOP (REFER TO DOCUMENT SD-74726-002)
- MATERIAL: COPPER ALLOY  
PLATING: PRE-PLATED WITH NICKEL
- NO RoHS EXEMPTIONS.
- REVISION LETTER IS FOLLOWING MOLEX 3D MODEL.
- INSERT TO CAHANGE ENGRAVING FOR LAST TWO DIGITS OF PART NUMBER OR 3D MODEL.
- INSERT TO IDENTIFY ADDITIONAL TOOLING STARTING WITH TOOL #2 AS FOLLOWS:  
LAST TWO DIGITS OF PART NUMBER, TOOL NUMBER AND REVISION LETTER.  
(E.G., 02-3J)
- DATE CODE STAMPED AREA FLATNESS 0.05mm MAX.

SEE REVISION TABLE IEC NO: CPG2016-2107 DRAWN BY: DRWENAM007 CHECKED BY: CHYORCHEN08 APPROVED BY: CHYORCHEN08 DATE: 2015/11/19 DATE: 2015/11/19 DATE: 2015/11/19	QUALITY SYMBOLS	GENERAL TOLERANCES (UNLESS SPECIFIED)	DIMENSION STYLE	SCALE	DESIGN UNITS	THIRD ANGLE PROJECTION
	∇=0 ∇=0 ∇=0	mm INCH ANGULAR ± 1 ° DRAFT WHERE APPLICABLE MUST REMAIN WITHIN DIMENSIONS	MM ONLY DATE DATE DATE	5:1	METRIC	SFP ONE PIECE CAGE 0.090" PRESS FIT LEGS BLY-BLY ASSEMBLY
	4 PLACES ± --- 3 PLACES ± --- 2 PLACES ± 0.13 1 PLACE ± 0.25 0 PLACE ±	DRAWN BY: CCOX CHECKED BY: RMAHMOOD APPROVED BY: RMAHMOOD DATE: 2006/11/30 DATE: 2006/11/30 DATE:	MATERIAL NO. 747370004	DOCUMENT NO. SD-74737-004	SHEET NO. 1 OF 4	
	SIZE D	THIS DRAWING CONTAINS INFORMATION THAT IS PROPRIETARY TO MOLEX INCORPORATED AND SHOULD NOT BE USED WITHOUT WRITTEN PERMISSION				

- ▲ DATUM AND BASIC DIMENSIONS ESTABLISHED BY CUSTOMER.
- ▲ PADS AND VIAS ARE CHASSIS GROUND.
- 3 HOLE LAYOUT SHOWN IS FOR SINGLE SIDED MOUNTING ONLY.
- 4. CONNECTOR PAD LAYOUT PER SFP MSA, WILL ACCOMODATE MOLEX CONNECTOR SERIES 74441 OR EQUIVALENT.



KEEP-OUT Detail  
SCALE 10:1

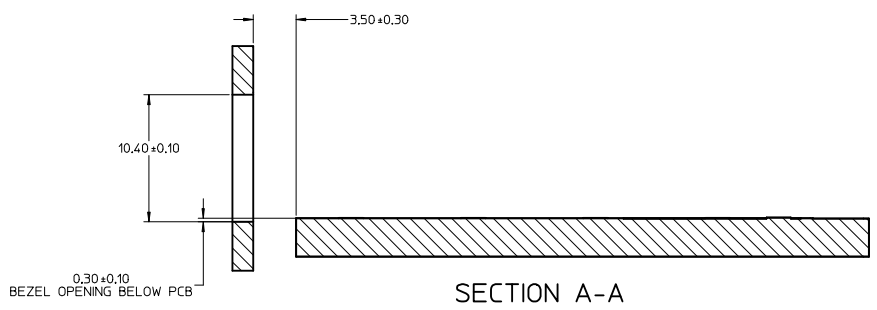
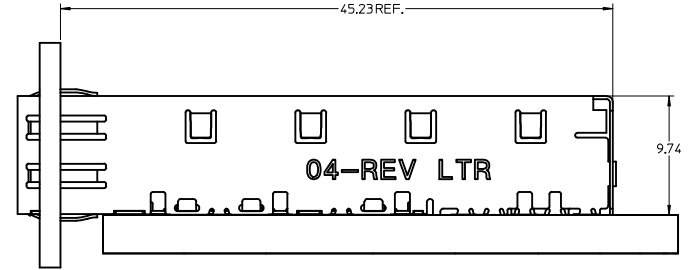
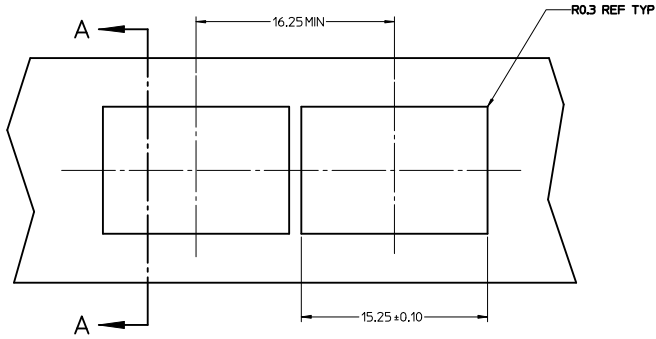
THIS AREA DENOTES  
COMPONENT KEEP-OUT  
(TRACES ALLOWED)

SEE KEEPOUT Detail

<b>SEE REVISION TABLE</b> IEC NO: CPG2016-2107 DRAWN BY: J CHYKORCHEN08 APPR: RCHEN08 2015/11/19 2015/11/19 2015/11/19	QUALITY SYMBOLS	GENERAL TOLERANCES (UNLESS SPECIFIED)	DIMENSION STYLE	SCALE	DESIGN UNITS	THIRD ANGLE PROJECTION
	▽=0	mm	MM ONLY	8:1	METRIC	☉
	▽=0	INCH				
	▽=0					
	4 PLACES ±	ANGULAR ± 1 °	DRAWN BY: CCOX	DATE: 2006/11/30	TITLE: SFP ONE PIECE CAGE 0.090" PRESS FIT LEGS BLY-BLY ASSEMBLY	
	3 PLACES ±	DRAFT WHERE APPLICABLE MUST REMAIN WITHIN DIMENSIONS	CHECKED BY: RMAHMOOD	DATE: 2006/11/30	DOCUMENT NO: SD-74737-004	
	2 PLACES ±		APPROVED BY: RMAHMOOD	DATE:	SHEET NO. 2 OF 4	
	1 PLACE ±		MATERIAL NO: 747370004		INCORPORATED AND SHOULD NOT BE USED WITHOUT WRITTEN PERMISSION	
	0 PLACE ±					

20 19 18 17 16 15 14 13 12 11 10 9 8 7 6 5 4 3 2 1

H  
L  
K  
J  
I  
H  
G  
F  
E  
D  
C  
B  
A



<b>SEE REVISION TABLE</b> EC NO: CPG2016-2107 J DRAWN/MAN/07 2015/11/19 CHOKRACHEN08 2015/11/19 APPROV/CHK/08 2015/11/19	QUALITY SYMBOLS ∇=0 ∇=0 ∇=0	GENERAL TOLERANCES (UNLESS SPECIFIED) mm INCH 4 PLACES ± --- ± --- 3 PLACES ± --- ± --- 2 PLACES ± 0.13 ± --- 1 PLACE ± 0.25 ± --- 0 PLACE ± ±	DIMENSION STYLE <b>MM ONLY</b>	SCALE <b>5:1</b>	DESIGN UNITS <b>METRIC</b>	THIRD ANGLE PROJECTION	
	DRAWN BY CCOX	DATE 2006/11/30	CHECKED BY RMAHMOOD	DATE 2006/11/30	APPROVED BY RMAHMOOD	DATE	TITLE <b>SFP ONE PIECE CAGE                  0.090" PRESS FIT LEGS                  BLY-BLY ASSEMBLY</b>
	MATERIAL NO. <b>747370004</b>	DOCUMENT NO. <b>SD-74737-004</b>	SHEET NO. 3 OF 4	THIS DRAWING CONTAINS INFORMATION THAT IS PROPRIETARY TO MOLEX INCORPORATED AND SHOULD NOT BE USED WITHOUT WRITTEN PERMISSION			
	DRAFT WHERE APPLICABLE MUST REMAIN WITHIN DIMENSIONS						

19 18 17 16 15 14 13 12 11 10 9 8 7 6 5 4 3 2 1

DATE	REV	REVISION TABLE
2007/01/17	A	INITIAL RELEASE
2007/01/24	B	UPDATED VIEWS
2007/02/08	C	ADDED NOTE 5
2007/03/06	D	ADDED SHEETS 2 AND 3
2007/01/23	E	UPDATED 2D VIEWS TO REFLECT CHG'S MADE TO EM-74737-004 REV E.
2007/04/25	F	[1] ADDED REV SHEET, [2] UPDATED REV SHEET NOTES A-E, [3] UPDATED DRAWING TO REFLECT CHG'S MADE TO EM-74737-004-ASSY REV D, [4] DELETED NOTE 2 ON SHT1 AND SHIFTED NUMBERS, [5] ON SHT1 ROTATED BTM_VIEW 180 DEGREES.
2007/11/27	G	[1] UPDATED VIEWS TO MATCH EM-74737-004-ASSY REV E.
2014/12/02	H	1. ADDED *MM 3D MODEL: EM-74737-004-ASSY* ON LEFT TOP CORNER. [SHEET 1] 2. ADDED NOTE 5, 6, 7. [SHEET 1] 3. CHANGED NOTE 4 TO *NO RoHS EXEMPTIONS*. [SHEET 1] 4. REMOVED ALL INCH UNIT. [SHEET 1~3]
2015/11/19	J	SHEET 1: A19 & E5: ADDED NOTE 8. *DATE CODE STAMPED AREA FLATNESS 0.05mm MAX.* SHEET 3: G16: ADDED DIM R0.3 REF TYP.

SEE REVISION TABLE IEC NO: CPG2016-2107 J CHYKORCHENOS APPROVED 2015/11/19 2015/11/19 2015/11/19	QUALITY SYMBOLS	GENERAL TOLERANCES (UNLESS SPECIFIED)	DIMENSION STYLE	SCALE	DESIGN UNITS	THIRD ANGLE PROJECTION	
	▽=0	4 PLACES ± mm INCH	MM ONLY	1:1	METRIC	☉	
	▽=0	3 PLACES ±					
	▽=0	2 PLACES ±0.13					
		1 PLACE ±0.25					
		0 PLACE ±					
		ANGULAR ± 1 °					
		DRAFT WHERE APPLICABLE MUST REMAIN WITHIN DIMENSIONS					
			DRAWN BY DATE		TITLE		
			CCOX 2006/11/30		SFP ONE PIECE CAGE 0.090" PRESS FIT LEGS BLY-BLY ASSEMBLY		
			CHECKED BY DATE				
			RMAHMOOD 2006/11/30				
			APPROVED BY DATE				
			RMAHMOOD				
			MATERIAL NO.	DOCUMENT NO.			
			747370004	SD-74737-004			
			SIZE				
			D				
			THIS DRAWING CONTAINS INFORMATION THAT IS PROPRIETARY TO MOLEX INCORPORATED AND SHOULD NOT BE USED WITHOUT WRITTEN PERMISSION				
						SHEET NO. 4 OF 4	