

ITEM	PART#	DESCRIPTION	QTY	UOM
A	1727081002	MINI-FIT SIGMA DR REC HSG 2X1CKT	1	PC
B	1727092001	MINI-FIT SIGMA TPA 1CKT	2	PC
C	1727181121	MINIFIT TPA 2.0 CRP TERM BRAS 16AWG S CN	2	PC
D	--	PAPER PRINTED PAPER WHITE	1	PC

FROM	TO	DESCRIPTION	COLOR
A1	--	1X16AWG DISC MPPE BK UL11028 HKUP	BLACK
A2	--	1X16AWG DISC MPPE BK UL11028 HKUP	BLACK

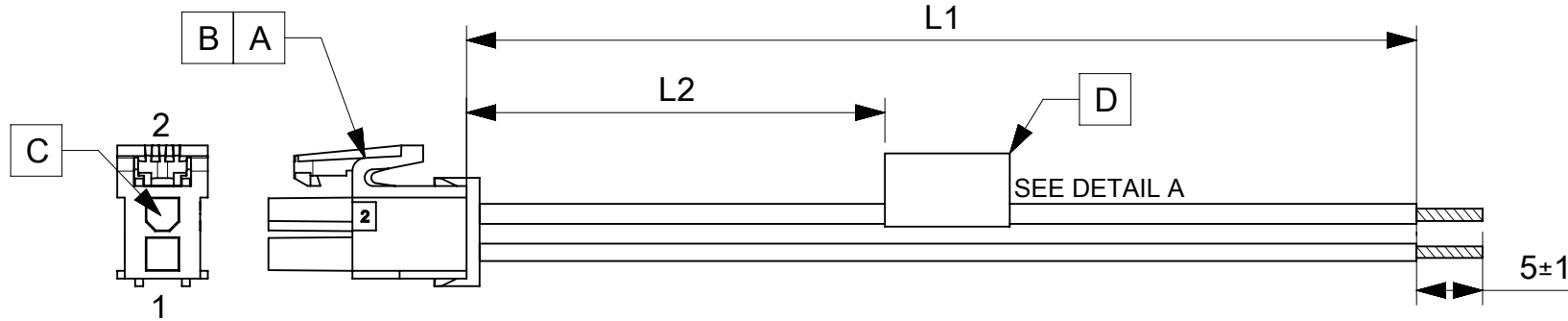


TABLE			
PART NUMBER	L1	L2 (REF)	TITLE
2183111021	150±8	63	MINI-FIT SIGMA 2CKT R-S 150MM DISC Sn
2183111022	300±10	138	MINI-FIT SIGMA 2CKT R-S 300MM DISC Sn
2183111023	600±10	288	MINI-FIT SIGMA 2CKT R-S 600MM DISC Sn

- NOTES**
- Free ends must be stripped, twisted & tinned. The length of tinning is 5±1mm. Tinning dia must be 1.9mm Max.
 - Connector view shown is from mating side.
 - Label text must be 2mm max. in height with Arial font.
 - Label must be wrapped in Flag type on a single cable.

MOLEX P/N
MOLEX
BATCH WK/YR
DETAIL A

REVISION			
DATE	REV	DESCRIPTION	CHANGER
10/05/2021	A	INITIAL RELEASE	ARAJU

FUNCTIONAL SYMBOLS $\frac{F}{A} = 0$ $\frac{F}{E} = 0$ $\frac{F}{P} = 0$ DIVISIONAL SYMBOLS	THIS DRAWING CONTAINS INFORMATION THAT IS PROPRIETARY TO MOLEX ELECTRONIC TECHNOLOGIES, LLC AND SHOULD NOT BE USED WITHOUT WRITTEN PERMISSION		CURRENT REV DESC:					
	DIMENSION UNITS	SCALE	GENERAL TOLERANCES (UNLESS SPECIFIED)					
	mm	NTS	ANGULAR TOL ± °					
	4 PLACES ±		3 PLACES ±					
3 PLACES ±		2 PLACES ±		EC NO: 665152	2021/05/10			
2 PLACES ±		1 PLACE ±		DRWN: ARAJU		2021/05/26		
1 PLACE ±		0 PLACES ±		CHK'D: RDESAI01	2021/05/26			
DRAFT WHERE APPLICABLE MUST REMAIN WITHIN DIMENSIONS		THIRD ANGLE PROJECTION	DRAWING	SERIES	DOCUMENT NUMBER	DOC TYPE	DOC PART	REVISION
			A4-SIZE	218311	2183111021	PSD	000	A
					MATERIAL NUMBER	CUSTOMER	SHEET NUMBER	
					SEE TABLE	GENERAL MARKET	1 OF 1	

DOCUMENT STATUS	P1	RELEASE DATE	2021/05/26	10:03:48
-----------------	----	--------------	------------	----------