

This document is the property of Amphenol Corporation and is delivered on the express condition that it is not to be disclosed, reproduced or used, in whole or in part, for manufacture or sale by anyone other than Amphenol Corporation without its prior consent, & that no right is granted to disclose or to use any information in this document.

Customer Drawing

REVISIONS

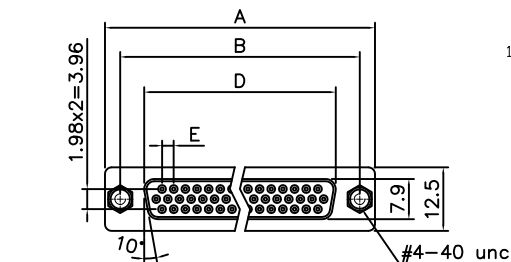
SYM	ECN	DESCRIPTION	DATE	APPROVED
1	HK--	First Release Drawing	04/14/08	IP
2	HK--	Update the Drawing	10/24/12	IP
3	HK--	Update the Drawing	07/23/13	IP
4	HK--	Add soldering tail length	06/25/15	IP
5	HK--	Add Dimension 6.8	12/08/15	IP

D-SUB TECHNICAL DATA

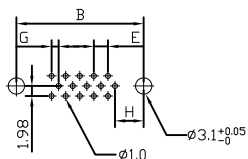
SHELL : Steel, 100u" Tin over 50u" min nickel over 50u" min Copper
BODY : Glass-Filled Thermoplastic PBT, UL94V-0 , Black
CONTACTS : Copper alloy
 Gold flash over 50u" nickel on mating area
 100u" tin over 50u" nickel on solder area

BOARDLOCK: Brass, Tin Plated.
SCREWLOCK: Copper Alloy, Nickel Plated.
ELECTRICAL: Voltage Rating 250 V
 Current Rating 3 AMP
 Withstanding Voltage >1000 V RMS
 Insulation Resistance >1000 M Ohms
 Contact Resistance 20 mOhms max.

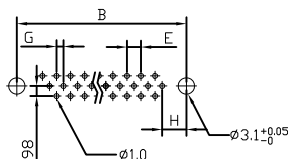
MARKING: Amphenol...(Series No.)
 Commercial Reference
 Manufacturing Date



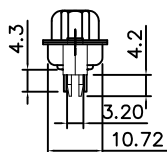
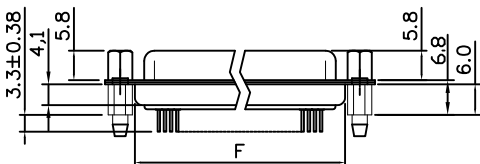
15 POSITION FEMALE



26,44,62 POSITION FEMALE

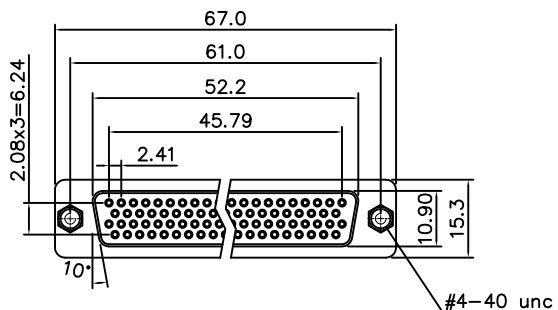


RECOMMENDED PCB LAYOUT
 TOLERANCE: ±0.05MM

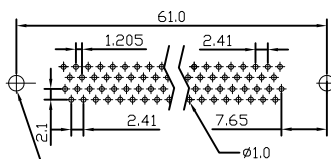


Dimensions

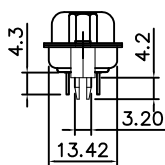
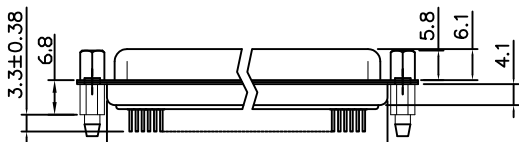
Positions	A	B	D	E	F	G	H
15	30.81	24.99	16.33	2.29	19.20	1.145	7.04
26	39.20	33.30	24.70	2.29	27.70	1.145	6.88
44	53.05	47.04	38.40	2.29	41.10	1.145	6.88
62	69.40	63.50	54.80	2.41	57.30	1.205	7.00



78 POSITION MALE/FEMALE



RECOMMENDED PCB LAYOUT
 TOLERANCE: ±0.05MM



55.10
 78 Positions

PRODUCT CODE

L 77 HD X H XX S OL2 RM8

L: RoHS Compliant

77: tinned shell for receptable

HD : High density

Shell Size: E, A, B, C, D

Mounting type: H = rear insert 4-40

RM8 = retention clip + front screwlock

Termination Straight for PCB

Contact type: S = Socket

Configuration: HD : 15,26,44,62,78

UNLESS OTHERWISE SPECIFIED TOLERANCES		APPROVAL		DATE
U.S.	METRIC	DRAWN	FILED	
X. +/-	0.38			12/08/15
.X +/-	0.25			
.XX +/-	0.13			
FRACTIONS +/-	5°			
ANGLES +/-				
FOR MATERIALS AND FINISHES SEE NOTES		DRAWING FILE :		
REMOVE SHARP EDGES		ANGLE OF PROJECTION		
DIMENSIONS				
U.S.	INCHES			
METRIC	MM			

Amphenol		
TITLE D-SUB connector, HD Series		
SIZE	DRAWING NO.	REV.
A4	L77HDHXHXXSOL2RM8	5
SCALE	NONE	SHEET 1 OF 1

