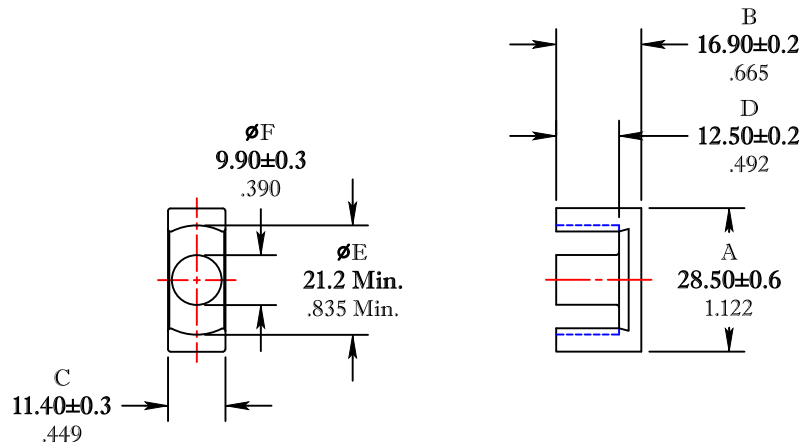


\*\* Not all features are shown in this drawing. For more detailed information, please contact your Fair-Rite representative.

UNCONTROLLED ~CATALOG~ DRAWING

SIZE	PART NO.	REV.
B	9595283402	~



DIMENSIONS  
**BOLD NUMBERS ARE IN MILLIMETERS**  
 LIGHT NUMBERS ARE IN INCHES

ELECTRICAL SPECIFICATIONS					
$\Sigma L/A(\text{mm}^{-1})$	$l_e$ (mm)	$A_e$ (mm <sup>2</sup> )	$V_e$ (mm <sup>3</sup> )	$A_{\text{MIN}}$ (mm <sup>2</sup> )	$A_L$ (nH) @ 1 kHz < 10 gauss
0.87	74.4	85.2	6337	77	3350±25%
MATE PAIR; CLAMPING FORCE = 10 lbs.					

POWER LOSS @ 25°C  
 f=100kHz, 2000g P.L. <3.6 Watts

POWER LOSS @ 100°C  
 f=100kHz, 2000g P.L. <3.2 Watts

FAIR-RITE PRODUCTS CORP.					
TITLE EER CORE					
DRAWN BY J.SERNCSICS	DATE 07-12-2018	SIZE B	PART NO. 9595283402	REV. ~	
CHKD BY					
APPRVD BY		SCALE NONE	SHEET 1 of 1		

FR# 95