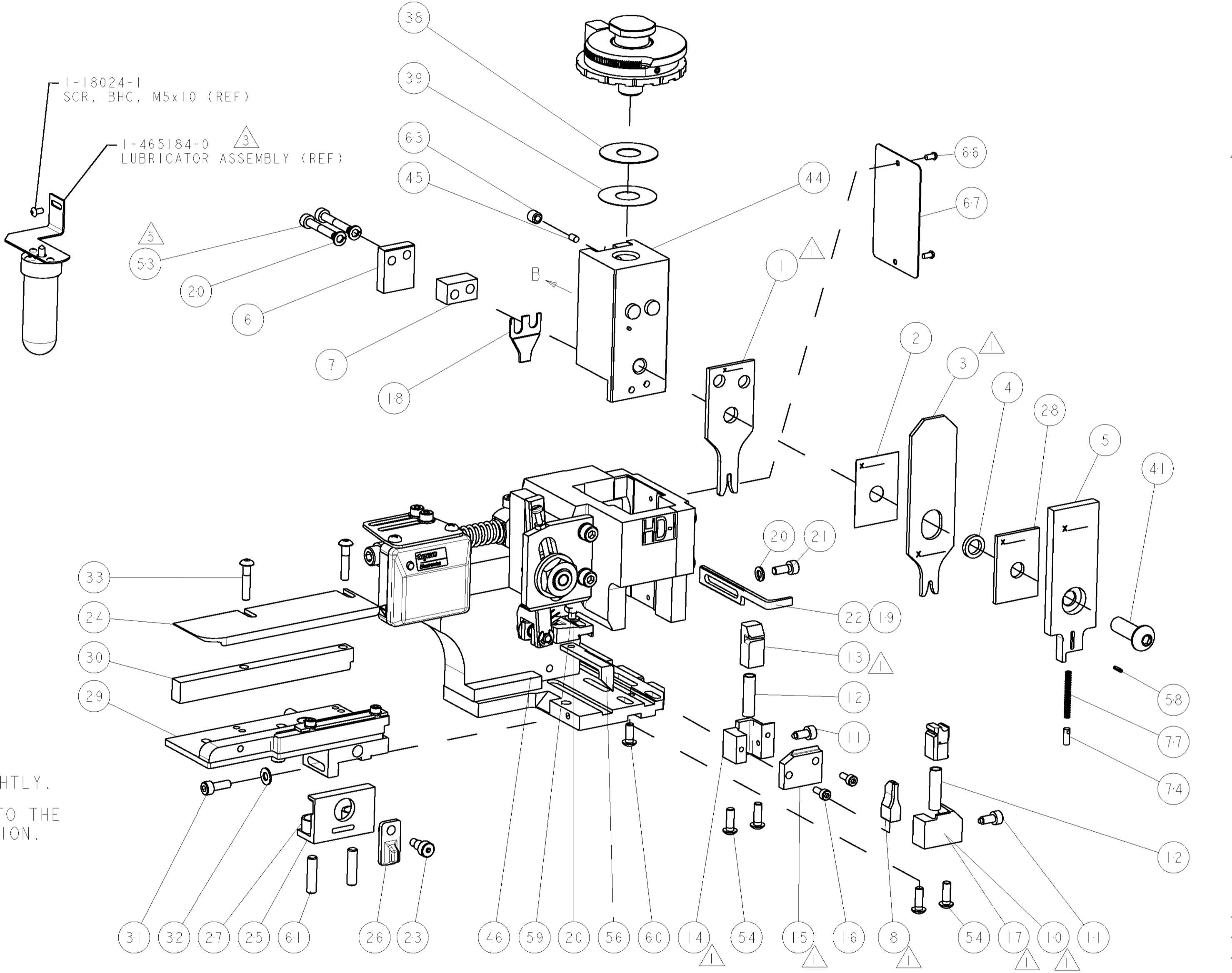


PART NUMBER	REV	TERMINATOR	FEED TYPE	DESCRIPTION
1528813-1	A	LEADMAKER	MECH POST FEED	CUTS CARRIER
1528813-2	A	BENCH	MECH PRE FEED	CUTS CARRIER
1528813-6	A	LEADMAKER	MECH POST FEED	CONTINUOUS CARRIER
7-1528813-1	A	LEADMAKER	MECH POST FEED	-1 AND SPARE PARTS
7-1528813-2	A	BENCH	MECH PRE FEED	-2 AND SPARE PARTS
7-1528813-6	A	LEADMAKER	MECH POST FEED	-6 AND SPARE PARTS
7-1528813-7	A	-	-	SPARE PARTS KIT

CRIMP DATA		TYCO TERMINAL	TYCO CRIMP SPECS
TERMINAL NAME: CONTACT TWIN LEAF			
CRIMP	SIZE	TYPE	RANGE
WIRE	2.03 [1.080 IN]	F	20-16 AWG
INSUL	2.29 [1.090 IN]	O	1.85-2.29 [1.073-.090 IN]
WIRE STRIP LENGTH 3.18-3.96 [1.25-.156 IN]		APPL INSTRUCTIONS 408-8322 & 408-8490	
TERMINAL APPL SPEC	114-9004	FEED	8.38 [1.330 IN]
TERMINALS APPLIED			
583875	-	-	-
-	-	-	-
-	-	-	-
-	-	-	-
WIRE SIZE	CRIMP HEIGHT	REF SETTING	
16 AWG	1.35 ± 0.05 [1.053 ± .002 IN]	B	7
18 AWG	1.14 ± 0.05 [1.045 ± .002 IN]	D	2
20 AWG	1.02 ± 0.05 [1.040 ± .002 IN]	E	1

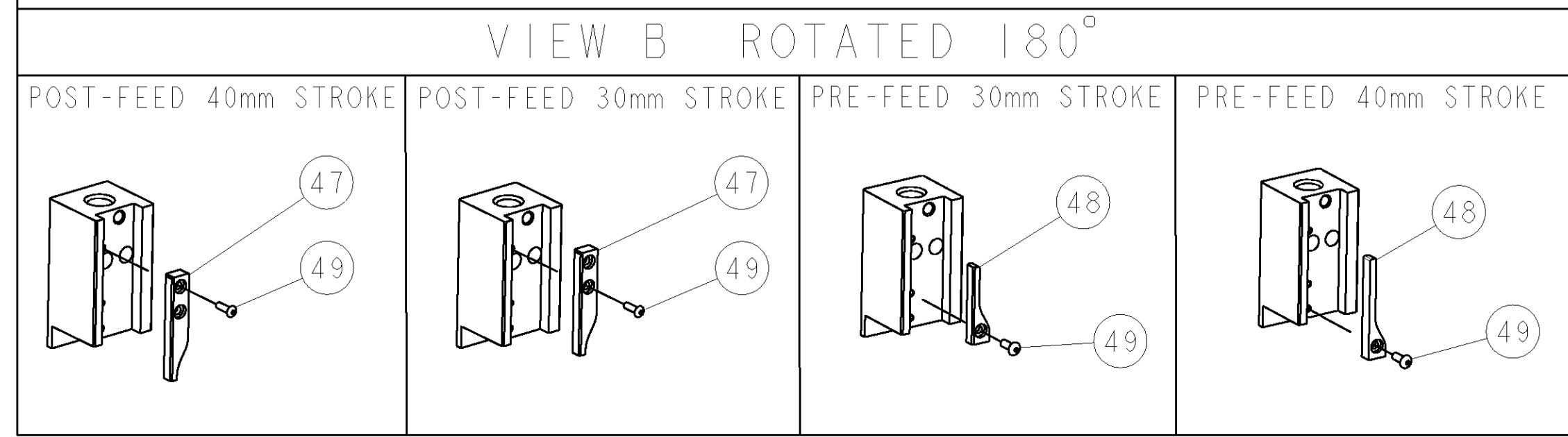


LOC		DIST		REVISONS			
A	66	P	LTR	DESCRIPTION	DATE	BY	APPD
A	66	A	SEE ECO-07-015211		27JUN2007	LJL	MC

-	-	-	-	-	-	-	-	73	
-	-	-	-	-	-	-	-	72	
-	1	1	1	1	1	1	1338705-3	DOCUMENTATION PACKAGE	71
-	-	-	-	-	-	-	-	-	70
-	-	-	-	-	-	-	-	-	69
-	-	-	-	-	-	-	-	-	68
-	1	1	1	1	1	1	461264-5	PLATE, IDENTIFICATION	67
-	2	2	2	2	2	2	21017-2	SCREW, DRIVE	66
-	-	-	-	-	-	-	-	-	65
-	-	-	-	-	-	-	-	-	64
-	1	1	1	1	1	1	3-18031-0	SCR, SET, CUP POINT M6 X 6.0	63
-	-	-	-	-	-	-	-	-	62
-	2	2	2	2	2	2	2-18032-5	SCR, SET, FLT POINT M5 X 20.0	61
-	1	1	1	1	1	1	18024-7	SCR, BTN SKT HD CAP (M4 X 10.0)	60
-	1	1	1	1	1	1	5-18022-2	SCR, HEX HD CAP M4 X 8.0	59
-	1	1	1	1	1	1	21028-2	PIN, SLOTTED SPRING .062 X .250	58
-	-	-	-	-	-	-	-	-	57
-	1	1	1	1	1	1	1338685-1	PAWL, FEED	56
-	1	-	-	-	-	-	1338723-1	HOLDER, SHEAR, REAR [NO CUT]	55
-	4	4	4	4	4	4	18024-8	SCR, BTN SKT HD CAP (M4 X 12.0)	54
-	2	2	2	2	2	2	1-18023-5	SCR, SKT HD CAP M4 X 25.0	53
-	-	-	-	-	-	-	-	-	52
-	-	-	-	-	-	-	-	-	51
-	-	-	-	-	-	-	-	-	50
-	1	1	1	1	1	1	18024-3	SCR, BTN SKT HD CAP (M3 X 10.0)	49
-	-	-	-	-	-	-	1338675-1	CAM, UNIVERSAL PRE FEED	48
-	-	-	-	-	-	-	1338676-1	CAM, UNIVERSAL POST-FEED	47
-	-	-	-	-	-	-	1320999-3	APPLICATOR SUBASSEMBLY, HDI	46
-	-	-	-	-	-	-	690191-1	PLUG, NYLON	45
-	-	-	-	-	-	-	1338660-1	RAM	44
-	-	-	-	-	-	-	-	-	43
-	-	-	-	-	-	-	-	-	42
-	1	1	1	1	1	1	2-18024-6	SCR, BTN SKT HD CAP (M8 X 25.0)	41
-	-	-	-	-	-	-	-	-	40
-	1	1	1	1	1	1	690125-1	SHIM SUB-ASSY	39
-	1	1	1	1	1	1	469367-9	SHIM	38
-	-	-	-	-	-	-	879103-3	FINE ADJUST HEAD ASSEMBLY	37
-	-	-	-	-	-	-	-	-	36
-	-	-	-	-	-	-	-	-	35
-	-	-	-	-	-	-	-	-	34
-	2	2	2	2	2	2	1-18024-0	SCR, BTN SKT HD CAP (M4 X 20.0)	33
-	1	1	1	1	1	1	18027-2	WASHER, FLAT, REG M4	32
-	1	1	1	1	1	1	1-18023-2	SCR, SKT HD CAP M4 X 12.0	31
-	1	1	1	1	1	1	1-1320908-7	SPACER, STRIP GUIDE	30
-	1	1	1	1	1	1	1633073-1	STRIP GUIDE ASSEMBLY	29
-	1	1	1	1	1	1	1-455888-9	SPACER, CRIMPER	28
-	2	2	2	2	2	2	1-22284-0	SPRING, COMPRESSION	27
-	1	1	1	1	1	1	356835-1	LEVER, DRAG RELEASE	26
-	1	1	1	1	1	1	240792-1	DRAG, TERMINAL	25
-	1	1	1	1	1	1	1320928-1	PLATE, STRIP GUIDE	24
-	1	1	1	1	1	1	980371-4	SCR, SKT HD SHLDR 5.0 DIA X 6.0	23
-	1	-	-	-	-	-	690472-2	STRIPPER	22
-	1	1	1	1	1	1	1-18023-1	SCR, SKT HD CAP M4 X 10.0	21
-	4	4	4	4	4	4	18025-2	WASHER, SPRG LOCK, REG M4	20
-	-	-	-	-	-	-	690472-1	STRIPPER	19
-	1	1	1	1	1	1	1-690518-1	HOLD DOWN, TERMINAL	18
-	1	-	-	-	-	-	1338684-1	SHEAR HOLDER, FRONT	17
-	2	2	2	2	2	2	18023-3	SCR, SKT HD CAP M3 X 8.0	16
-	1	1	1	1	1	1	690691-3	PLATE, REAR SHEAR	15
-	-	-	-	-	-	-	1320920-1	SHEAR HOLDER, REAR [CUTTING]	14
-	1	1	1	1	1	1	690463-1	FLOATING SHEAR, REAR	13
-	2	2	2	2	2	2	3-22280-3	SPRING, COMPRESSION	12
-	2	2	2	2	2	2	356885-4	STOP, SHEAR	11
-	-	-	-	-	-	-	1320921-1	SHEAR HOLDER, FRONT, CUT	10
-	1	1	1	1	1	1	462006-1	FLOATING SHEAR, FRONT	9
-	1	2	2	2	1	1	4-1633131-2	ANVIL, COMBINATION .080	8
-	1	1	1	1	1	1	5-240641-3	SPACER	7
-	1	1	1	1	1	1	690468-1	DEPRESSOR SHEAR, REAR	6
-	1	1	1	1	1	1	854772-1	DEPRESSOR, SHEAR	5
-	1	1	1	1	1	1	1-238011-0	BLOCK, CRIMPER SPACER	4
-	1	2	2	2	1	1	5-904741-8	CRIMPER, INSUL O PREMIUM	3
-	1	1	1	1	1	1	455888-1	SPACER, CRIMPER	2
-	1	2	2	2	1	1	2-456405-8	CRIMPER, WIRE PREMIUM	1

- △ RECOMMENDED SPARE PARTS.
- 2. GREASE RAM, CAM, CAM FOLLOWER AND FEED ROD LIGHTLY.
- △ CERTAIN TERMINALS REQUIRE LUBRICATION. REFER TO THE APPLICATOR INSTRUCTION SHEET FOR MORE INFORMATION.
- 4. LUBRICATE DAILY PER THE APPLICATOR INSTRUCTION SHEET SUPPLIED WITH THE APPLICATOR.
- △ CUT TO LENGTH AT ASSEMBLY.

\* WARNING  
ON INSTALLATION, SET WIRE DISC TO LARGEST WIRE SIZE SETTING. USE OF SETTINGS BELOW MIN. REQUIRED CRIMP HEIGHT SETTING WILL CAUSE DAMAGE TO CRIMP TOOLING.



-77	-76	-72	-71	-6	-2	-1	PART NO	DESCRIPTION	ITEM NO
-	-	-	-	-	-	-			83
-	-	-	-	-	-	-			82
-	-	-	-	-	-	-			81
-	-	-	-	-	-	-			80
-	-	-	-	-	-	-			79
-	-	-	-	-	-	-			78
-	1	1	1	1	1	1	1-22278-0	SPRING, COMPRESSION	77
-	-	-	-	-	-	-			76
-	-	-	-	-	-	-			75
-	1	1	1	1	1	1	854769-2	HOLDER, INS	74

DIMENSIONS:		TOLERANCES UNLESS OTHERWISE SPECIFIED:		APPROVED:		NAME:	
mm [IN]		0 PLC	±	DATE		DATE	
		1 PLC	±	24MAY2007		24MAY2007	
		2 PLC	±				
		3 PLC	±				
		4 PLC	±				
		ANGLES	±				