

DO NOT SCALE FROM THIS PRINT

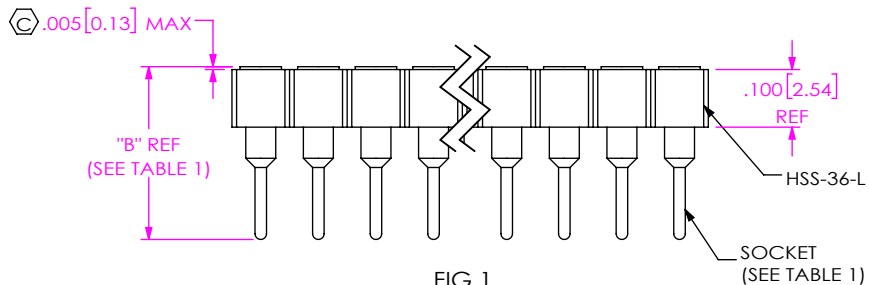
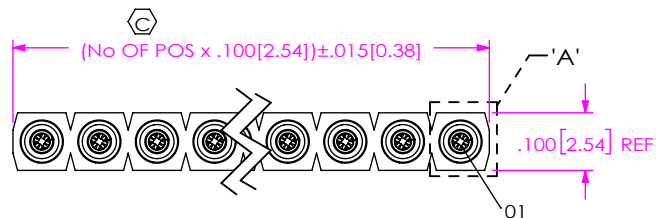


FIG 1  
HSS-1XX-XX-2 SHOWN

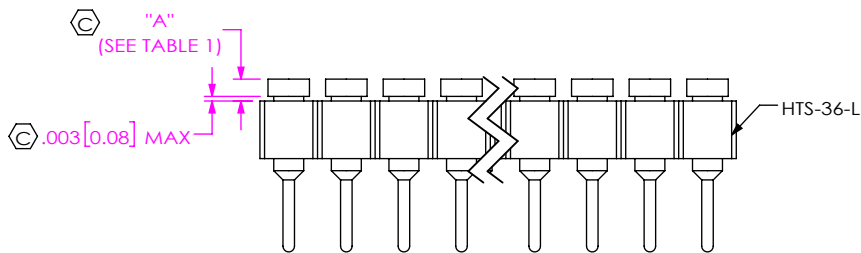


FIG 2  
HSS-1XX-XX-2-N SHOWN  
(SEE NOTE 6)  
(SAME AS FIG 1, DIFFERENT AS SHOWN)

NOTES:

1.  $\odot$  REPRESENTS A CRITICAL DIMENSION.
2. MAXIMUM CUT FLASH: .005[0.13] IN ALL AREAS EXCEPT BAR BREAK OFF AREA; .012[0.31] IN BAR BREAK OFF AREA
3. MINIMUM PUSHOUT FORCE: 5 LB
4. MAXIMUM ALLOWABLE BOW: .003[0.08]
5. FOR STYLE -5 & ANY -N OPTION, USE HTS-36-L AND INSERT PIN ON COUNTERBORE SIDE.
6. OPERATOR MUST VERIFY CORRECT PIN BY CHECKING THE NUMBER OF CLIPS.
7. POSITIONS 1 - 4 AND ANY BODY/LEAD STYLES NOT LISTED IN THE TUBE TABLE TO BE PACKAGED IN BULK.

HSS-1XX-XX-XX-X-X

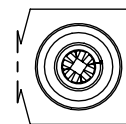
No OF POSITIONS  
-01 THRU -36  
(PER ROW)

OPTION  
-N: NON-FLUSH  
(SEE NOTE 5)  
(NOT AVAILABLE ON LEAD STYLES  
-5A, -7, -21A, -21B, -21C, -23, -28, & -29)

OPTION  
-L: LOCKING LEAD  
(ONLY AVAILABLE WITH LEAD STYLES -2 & -22)  
(ONLY AVAILABLE WITH -T PLATING)

LEAD STYLE  
(SEE SOCKET SPECIFICATION, TABLE 1)

PLATING SPECIFICATION  
-G: 30 $\mu$ " GOLD ON CONTACT,  
10 $\mu$ " GOLD ON SHELL  
(-28 AVAILABLE TO EXISTING CUSTOMERS ONLY)  
-T: 30 $\mu$ " GOLD ON CONTACT,  
MATTE TIN ON SHELL  
(-3 LEAD STYLES NOT AVAILABLE,  
-28 AVAILABLE TO EXISTING CUSTOMERS ONLY)  
-TT: MATTE TIN ON CONTACT,  
MATTE TIN ON SHELL  
(NOT AVAILABLE ON LEAD STYLES -3, -21A THRU -38)  
-S: 10 $\mu$ " SELECTIVE GOLD ON CONTACT,  
MATTE TIN ON SHELL  
(ONLY AVAILABLE ON LEAD STYLES -2 & -22)  
( FOR LOCKING LEAD OPTION, USE SC-1L1-GT)



DETAIL 'A'  
SCALE 6 : 1  
(SEE TABLE 1 & NOTE 6)

TABLE 1 - HSS LEAD STYLES

LEAD STYLE	SOCKET	"A" (-N OPTION ONLY)		"B" (PIN LENGTH)	No OF FINGER CLIPS (SEE NOTE 6)
		MIN	MAX		
-1A	SC-1W1-XX-2	N/A	.038 [0.97]	.563 [14.30]	4
-1B	SC-1W1-XX-1	N/A	.038 [0.97]	.703 [17.86]	4
-1C	SC-1W1-XX-3	N/A	.038 [0.97]	.453 [11.51]	4
-2	SC-1P1-XX	.025 [0.64]	.038 [0.97]	.300 [7.62]	4
** -3	SC-1S1-XX	N/A	.038 [0.97]	.203 [5.16]	4
*** -5	SC-2P1-XX	N/A	.038 [0.97]	.703 [17.86]	4
*** -5A	SC-2P1-XX	N/A	N/A	.703 [17.86]	4
** -7	SC-1P3-XX	N/A	N/A	.600 [15.24]	4
-13	SC-2P7-XX	N/A	.039 [0.99]	.310 [7.87]	4
-18	SC-6P1-XX	.025 [0.64]	.038 [0.97]	.353 [8.97]	4
-21A	EZ-1W1-XX-2	N/A	N/A	.553 [14.05]	6
-21B	EZ-1W1-XX-1	N/A	N/A	.703 [17.86]	6
-21C	EZ-1W1-XX-3	N/A	N/A	.453 [11.51]	6
-22	EZ-1P1-XX	.025 [0.64]	.038 [0.97]	.300 [7.62]	6
* -28	EZ-2P3-XX	N/A	N/A	.542 [13.77]	6
-29	EZ-2P2-XX	N/A	N/A	.703 [17.86]	6
-38	EZ-6P1-XX	.025 [0.64]	.038 [0.97]	.353 [8.97]	6

\*= G-28 AND T-28 AVAILABLE TO EXISTING CUSTOMERS ONLY  
\*\*= ONLY AVAILABLE WITH -G PLATING.  
\*\*\*= -5, -5A AVAILABLE WITH -T PLATING AND TO EXISTING CUSTOMERS ONLY.

UNLESS OTHERWISE SPECIFIED,  
DIMENSIONS ARE IN INCHES.  
TOLERANCES ARE:  
DECIMALS ANGLES  
.XX: ±.01 [0.3] 2°  
.XXX: ±.005 [0.13]  
.XXXX: ±.0020 [0.051]

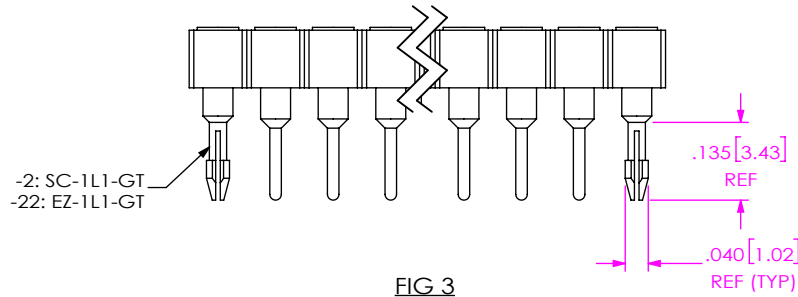
PROPRIETARY NOTE  
THIS DOCUMENT CONTAINS CONFIDENTIAL AND PROPRIETARY INFORMATION AND ALL DESIGN, MANUFACTURING, REPRODUCTION, USE, PATENT RIGHTS AND SALES RIGHTS ARE EXPRESSLY RESERVED BY SAMTEC, INC. THIS DOCUMENT SHALL NOT BE DISCLOSED, IN WHOLE OR PART, TO ANY UNAUTHORIZED PERSON OR ENTITY NOR REPRODUCED, TRANSFERRED OR INCORPORATED IN ANY OTHER PROJECT IN ANY MANNER WITHOUT THE EXPRESS WRITTEN CONSENT OF SAMTEC, INC.



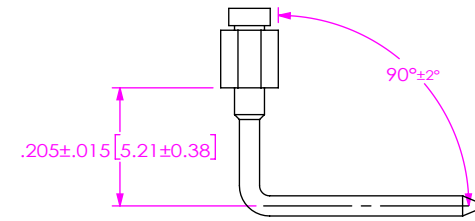
520 PARK EAST BLVD, NEW ALBANY, IN 47150  
PHONE: 812-944-6733 FAX: 812-948-5047  
e-Mail info@SAMTEC.com code 55322

MATERIAL: DO NOT SCALE DRAWING SHEET SCALE: 3:1  
INSULATOR: LCP, COLOR: BLACK  
SOCKET: BeCu/BRASS  
BRASS

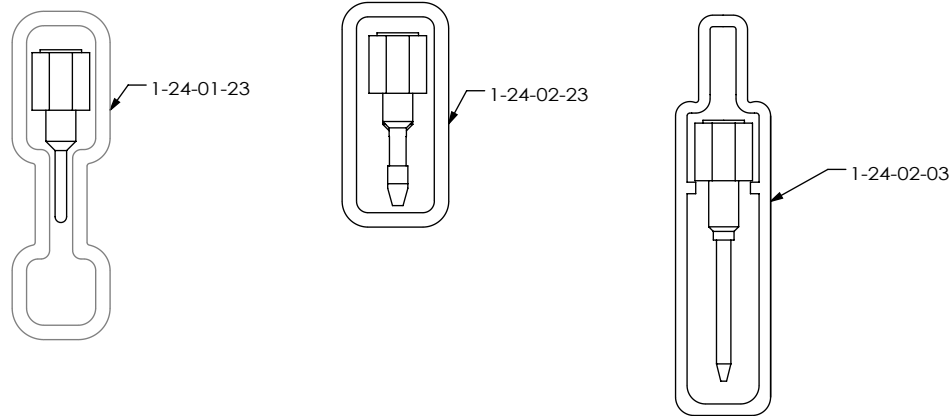
DESCRIPTION:  
SOCKET STRIP ASSEMBLY  
DWG. NO.  
HSS-1XX-XX-XX-X-X  
BY: J. BROWNING 08/06/2015 SHEET 1 OF 2



**FIG 3**  
HSS-1XX-XX-22-L SHOWN  
(ONLY AVAILABLE IN LEAD STYLES -2 & -22)  
(SAME AS FIG 1, DIFFERENT AS SHOWN)



**FIG 4**  
HSS-1XX-XX-5 SHOWN  
(SAME AS FIG 2, DIFFERENT AS SHOWN)



**PACKAGING VIEWS**  
(SEE NOTE 7 & TABLE 2)

TABLE 2 - PACKAGING TUBES			
BODY STYLE	LEAD STYLE	TUBE	PLUG
-HSS	-2, -3, -13, -18, -22, -38	PT-1-24-01-23	TP-12
	-2-L, -22-L	PT-1-24-02-23	TP-12
	-1C, -21C	PT-1-24-02-03	TP-24

**PROPRIETARY NOTE**  
THIS DOCUMENT CONTAINS CONFIDENTIAL AND PROPRIETARY INFORMATION AND ALL DESIGN, MANUFACTURING, REPRODUCTION, USE, PATENT RIGHTS AND SALES RIGHTS ARE EXPRESSLY RESERVED BY SAMTEC, INC. THIS DOCUMENT SHALL NOT BE DISCLOSED, IN WHOLE OR PART, TO ANY UNAUTHORIZED PERSON OR ENTITY NOR REPRODUCED, TRANSFERRED OR INCORPORATED IN ANY OTHER PROJECT IN ANY MANNER WITHOUT THE EXPRESS WRITTEN CONSENT OF SAMTEC, INC.



520 PARK EAST BLVD, NEW ALBANY, IN 47150  
PHONE: 812-944-6733 FAX: 812-948-5047  
e-Mail info@SAMTEC.com code 55322

DO NOT SCALE DRAWING

SHEET SCALE: 3:1

DESCRIPTION:  
SOCKET STRIP ASSEMBLY

DWG. NO.  
HSS-1XX-XX-XX-X-X

BY: J. BROWNING 08/06/2015 SHEET 2 OF 2