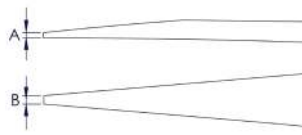
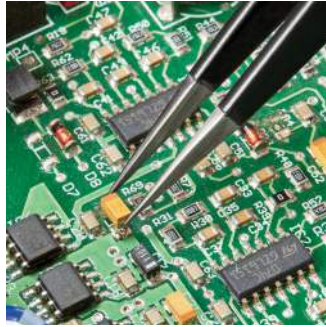
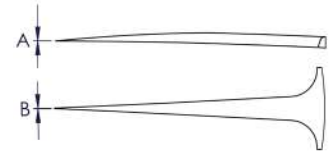


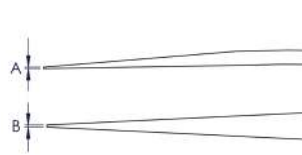
- > Stainless steel offers corrosion resistance
- > 80% anti-magnetic (20% magnetic dues to weld during manufacturing)
- > Needle-point tips offer extra-fine gripping on very small components and wire
- > ESD handles discharge electrostatic energy through the handles in a gradual and controlled manner (Dissipative  $10^4/10^9$  OHM regarding DIN EN 61340-5-1)



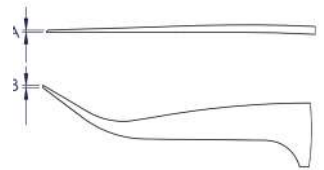
**92 21 01 ESD, 92 21 07, 92 22 06, 92 22 07, 92 28 69 ESD and 92 28 70 ESD**



**92 22 12 and 92 28 71 ESD**



**92 21 03 ESD and 92 21 08**



**92 32 29 and 92 38 75 ESD**

	Product Number	Length	Width	Height	Finish	Style	Gripping Surface	Tip (A)	Tip (B)
	<b>92 21 01 ESD</b>	5"	7/16"	1/2"	stainless steel, 80% anti-magnetic, acid resistant, ESD	straight	smooth	0.20 mm	0.25 mm
	<b>92 21 03 ESD</b>	5 1/2"	5/16"	9/16"	stainless steel, 80% anti-magnetic, acid resistant, ESD	straight	smooth	0.20 mm	0.30 mm
	<b>92 21 07</b>	4 3/8"	3/8"	3/8"	stainless steel, 80% anti-magnetic, acid resistant	straight	smooth	0.20 mm	0.25 mm
	<b>92 21 08</b>	5 1/2"	5/16"	1/2"	stainless steel, 80% anti-magnetic, acid resistant	straight	smooth	0.20 mm	0.30 mm
	<b>92 22 06</b>	4 3/4"	3/8"	7/16"	stainless steel, 80% anti-magnetic, acid resistant	straight	smooth	0.25 mm	0.25 mm
	<b>92 22 07</b>	5"	7/16"	3/8"	stainless steel, 80% anti-magnetic, acid resistant	straight	smooth	0.20 mm	0.25 mm
	<b>92 22 12</b>	4 3/8"	3/8"	7/16"	stainless steel, 80% anti-magnetic, acid resistant	straight	smooth	0.20 mm	0.20 mm
	<b>92 28 69 ESD</b>	4 3/4"	3/8"	1/2"	stainless steel, 80% anti-magnetic, acid resistant, ESD	straight	smooth	0.25 mm	0.25 mm
	<b>92 28 70 ESD</b>	4 3/8"	3/8"	1/2"	stainless steel, 80% anti-magnetic, acid resistant, ESD	straight	smooth	0.20 mm	0.25 mm
	<b>92 28 71 ESD</b>	4 3/8"	3/8"	1/2"	stainless steel, 80% anti-magnetic, acid resistant, ESD	straight	smooth	0.20 mm	0.20 mm
	<b>92 32 29</b>	4 5/8"	3/8"	3/8"	stainless steel, 80% anti-magnetic, acid resistant	35° angled	smooth	0.25 mm	0.30 mm
	<b>92 38 75 ESD</b>	4 5/8"	3/8"	3/8"	stainless steel, 80% anti-magnetic, acid resistant, ESD	35° angled	smooth	0.25 mm	0.30 mm