



Electrical specifications

Center Frequency: 2583 MHz
Bandwidth: 75 MHz
Input / Output Impedance: 50 Ohms
Insertion Loss (F0): 2.2 dB
Ripple in BW: 0.5 dB max
VSWR: 1.5 : 1 dB max
Rejection: 45dB min at 2442MHz
Rejection 2: 45dB min at 2723MHz
Power Handling: 2 watt max

Mechanical

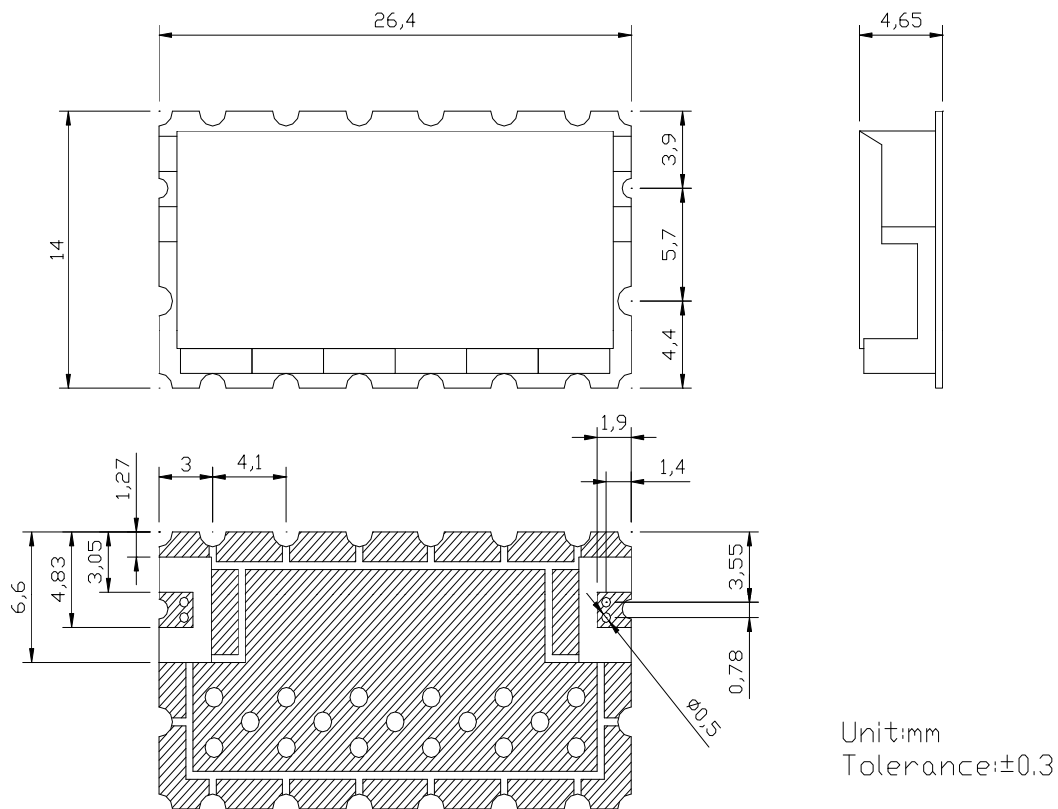
Mounting Method: SMT
Dimensions: 26.4 x 14 x 4.65 mm

Environmental

Operating Temperature: -30°C to 85°C
Storage Temperature: -50°C to +90°C

This product is RoHs compliant.

Outline Drawing:





Response Plot:

