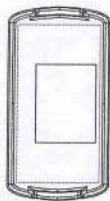


REVISONS

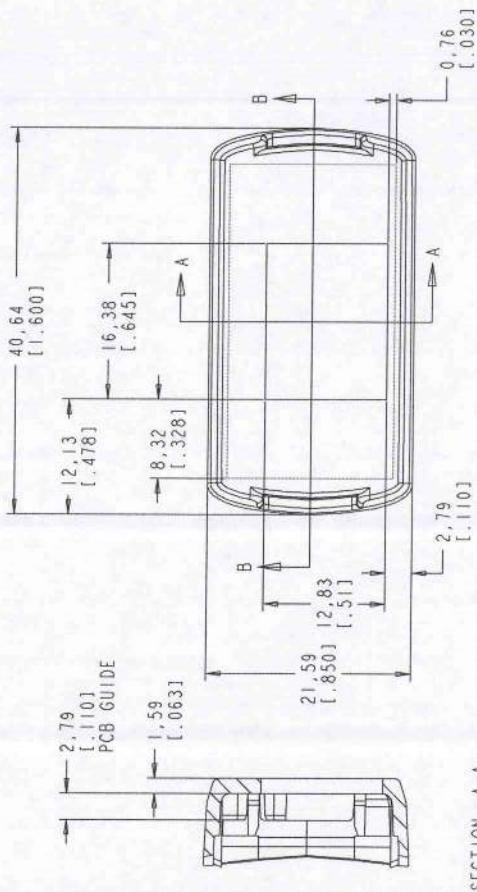
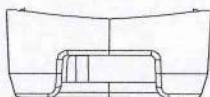
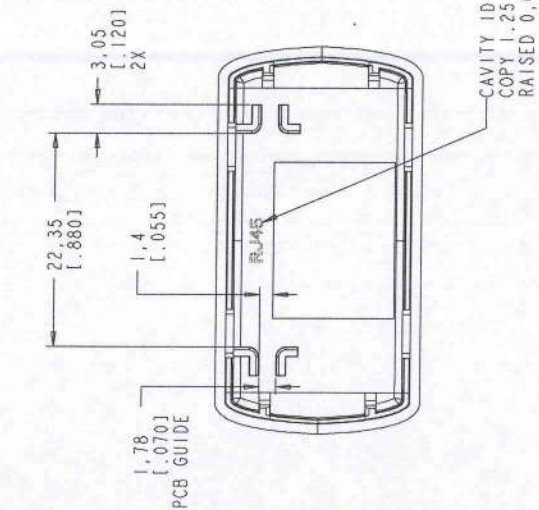
LET	ECN	DESCRIPTION	DATE	INT
01		INITIAL RELEASE	04-08-12	Janves
02		ADDED CAVITY ID	05-22-12	JMM



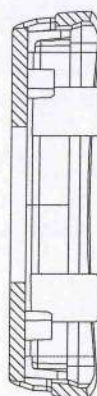
SCALE 1/1

NOTES:

- FOR LIST OF MATERIAL SEE:  
PL 1151126-501, 115127-501
- UNLESS OTHERWISE SPECIFIED:  
CORNERS SHOWN SHARP HAVE  
A RADIUS OF .01.
- NO KNOCKOUTS, GATES, OR FLASH  
ON THE EXTERIOR SURFACES.
- FLASH PERMISSIBLE WITHIN .005 INCH.
- KNOCKOUTS FLUSH TO .005 BELOW SURFACE.
- TEXTURE: EDM #33
- INTERIOR FINISH: SPI C3 OR BETTER
- FOR ALL OTHER DIMENSIONS,  
SEE DRAWING: 115119-01



SECTION A-A



SECTION B-B

PACNITEC

Subsidiary of LaFrance Corp.

1151126-501

NAME	DATE
Janves	04-08-12
Ted	04-08-12
JMM	04-23-12

CNR SERIES	SCALE: 2:1	SHEET 1 OF 1
END CAP, RJ45	INJ MOLDED	
PROCESS:	PART #	DRAWING NUMBER
	115123-01	115123-01
		REV
		02

MATERIAL: SEE PARTS LIST  
 COLOR: SEE PARTS LIST  
 CLASS:

MOLDED TOLERANCE:  
 PRODUCT WILL BE PRODUCED  
 PER SPC - SPECIFICATIONS  
 AND TOLERANCES

MACHINED:  
 DECIMALS:  
 .XX ± .02  
 .XXX ± .010