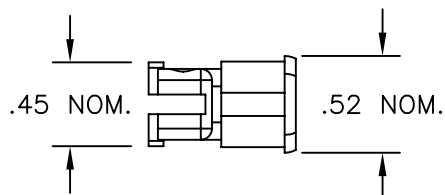
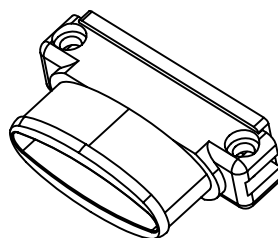
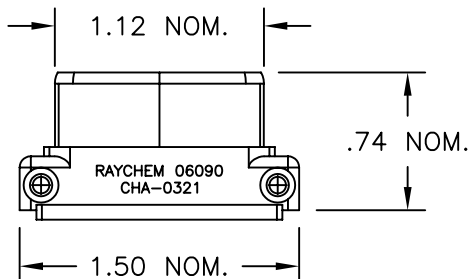


REVISION			
REV	DESCRIPTION	DATE	APPROVED
A	INITIAL RELEASE PER ECO# 07-013785	06JUN2007	T. RATZLAFF
B	PER ECO# 07-023644	Oct/8/07	M.HIGGY



NOTES:

1. APPLICATION: FOR USE ON 1" MTC SHELLS, ELECTROLESS NICKEL PLATED.
2. BODY: ALUMINUM, ELECTROLESS NICKEL PLATE PER RAYCHEM ES 61400/16.
3. BANDSTRAP (NOT SHOWN): CRES-Lock BND-1225, CRES, PASSIVATED.
4. SCREWS (NOT SHOWN): 4-40 SOCKET HEAD CAP SCREW, CRES, PASSIVATED, SELF-LOCKING.
5. MARKINGS: BLACK INK.
6. MEETS APPLICABLE REQUIREMENTS OF RAYCHEM SPECIFICATION C-6114.
7. WEIGHTS:
 BACKSHELL: 7.5gm (NOM)
 SCREWS (2): 1.2gm (NOM), TOTAL
 BANDSTRAP (INSTALLED): 7.5gm (NOM)

If this document is printed it becomes uncontrolled. Check for the latest revision

© 2007 TYCO ELECTRONICS CORPORATION. ALL RIGHTS RESERVED.

CUSTOMER DRAWING			
UNLESS OTHERWISE SPECIFIED DIMENSIONS ARE INCHES. METRIC DIMENSIONS ARE IN BRACKETS. DECIMAL TOLERANCES .XXX ± 0.005 [0.13 mm] .XX ± 0.010 [0.25 mm] .X ± 0.020 [0.50 mm] ANGLE TOLERANCE .X ± 0.5 DEG. WEIGHT, INSTALLED (NOM) LBS. 0.0417 [18.9 gm]	DRAWN T RATZLAFF	DATE 06JUN2007	
	MATERIAL SEE NOTES		TITLE MTC BACKSHELL ADAPTER, CRES-Lock BAND
FINISH SEE NOTES		Raychem Interconnect <small>300 Constitution Drive Menlo Park, CA 94025 U.S.A</small>	
THIRD ANGLE PROJECTION 		SIZE A	CAGE CODE 06090
CAD FILE CHA-0321_CD_B		DWG. NO. CHA-0321	DO NOT SCALE THIS DRAWING SHEET 1 OF 1