

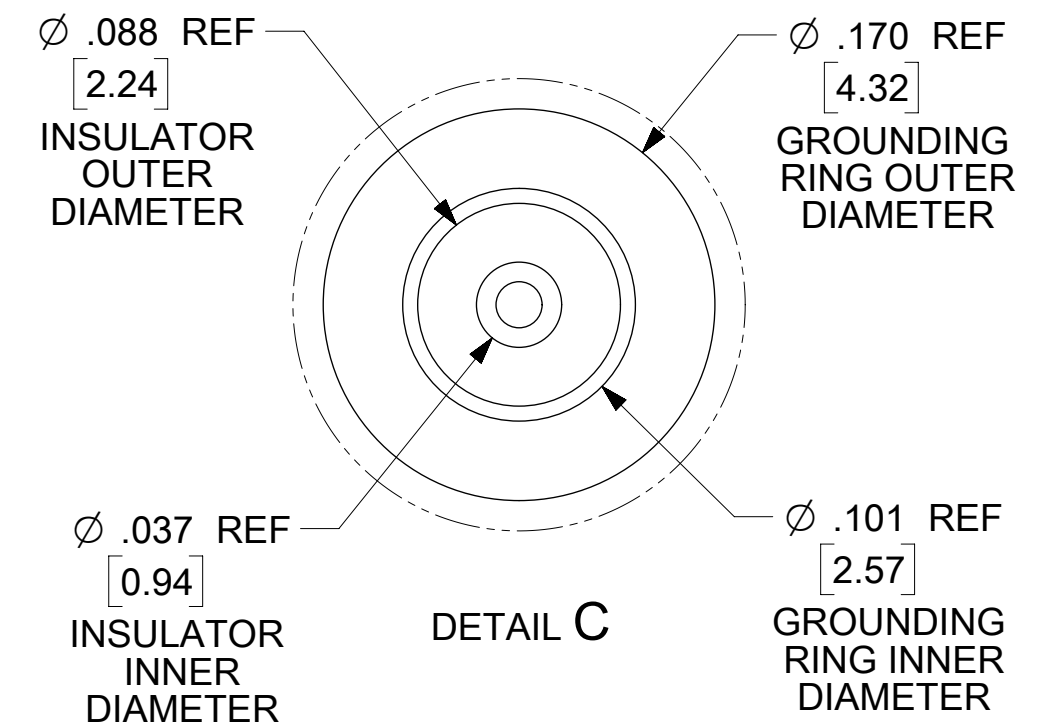
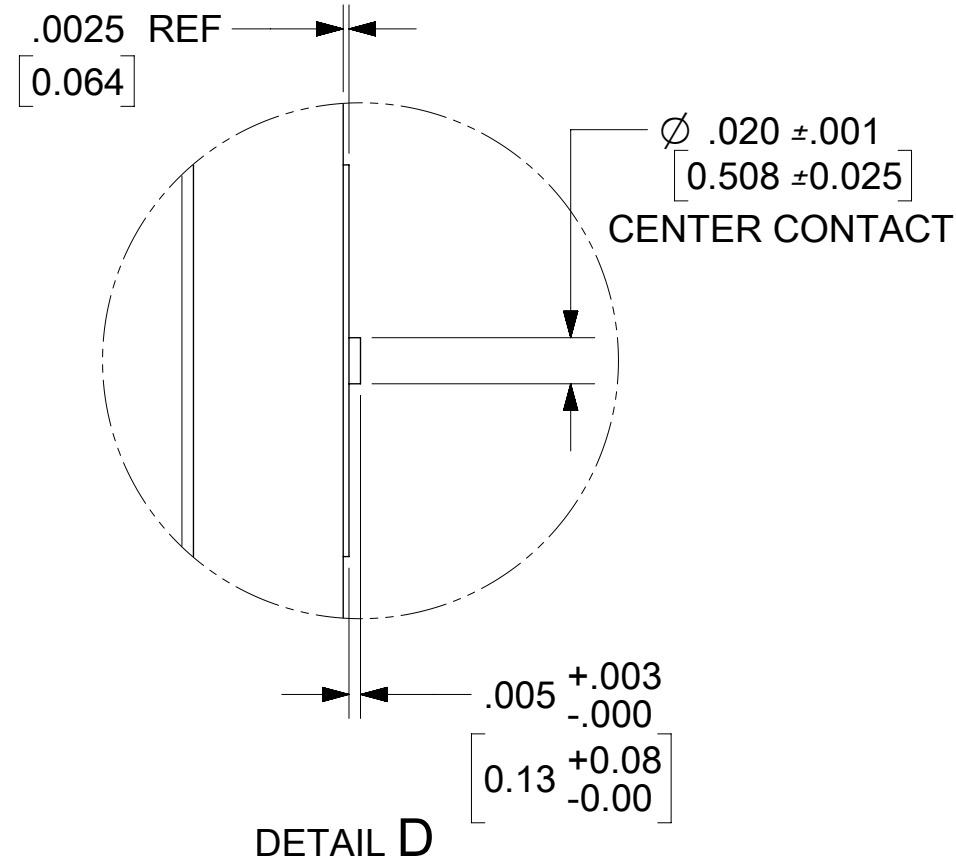
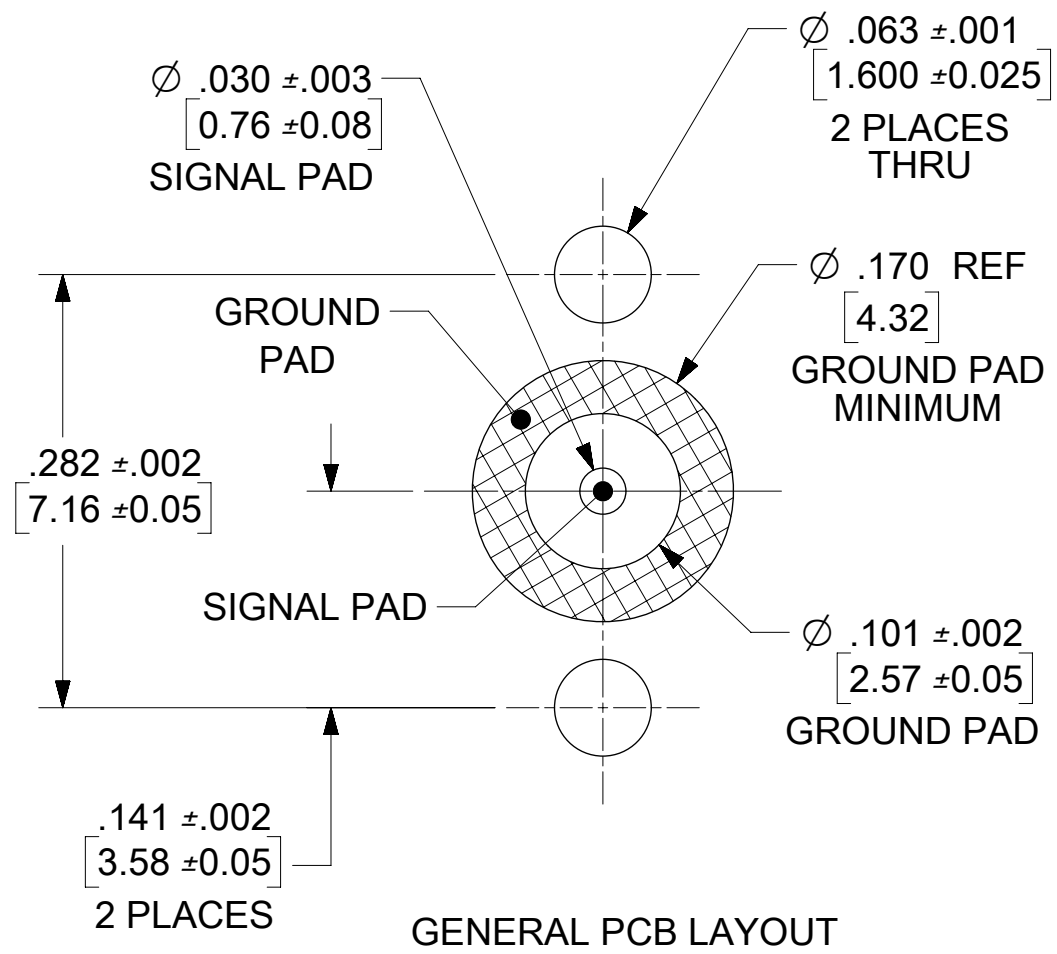
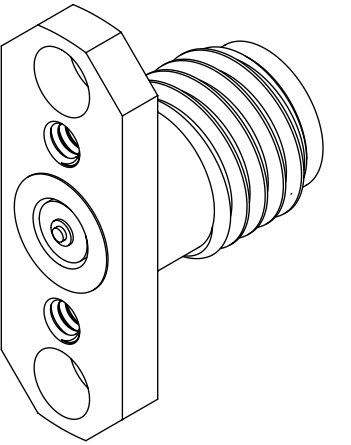
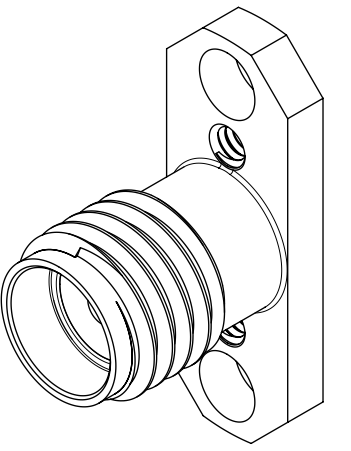
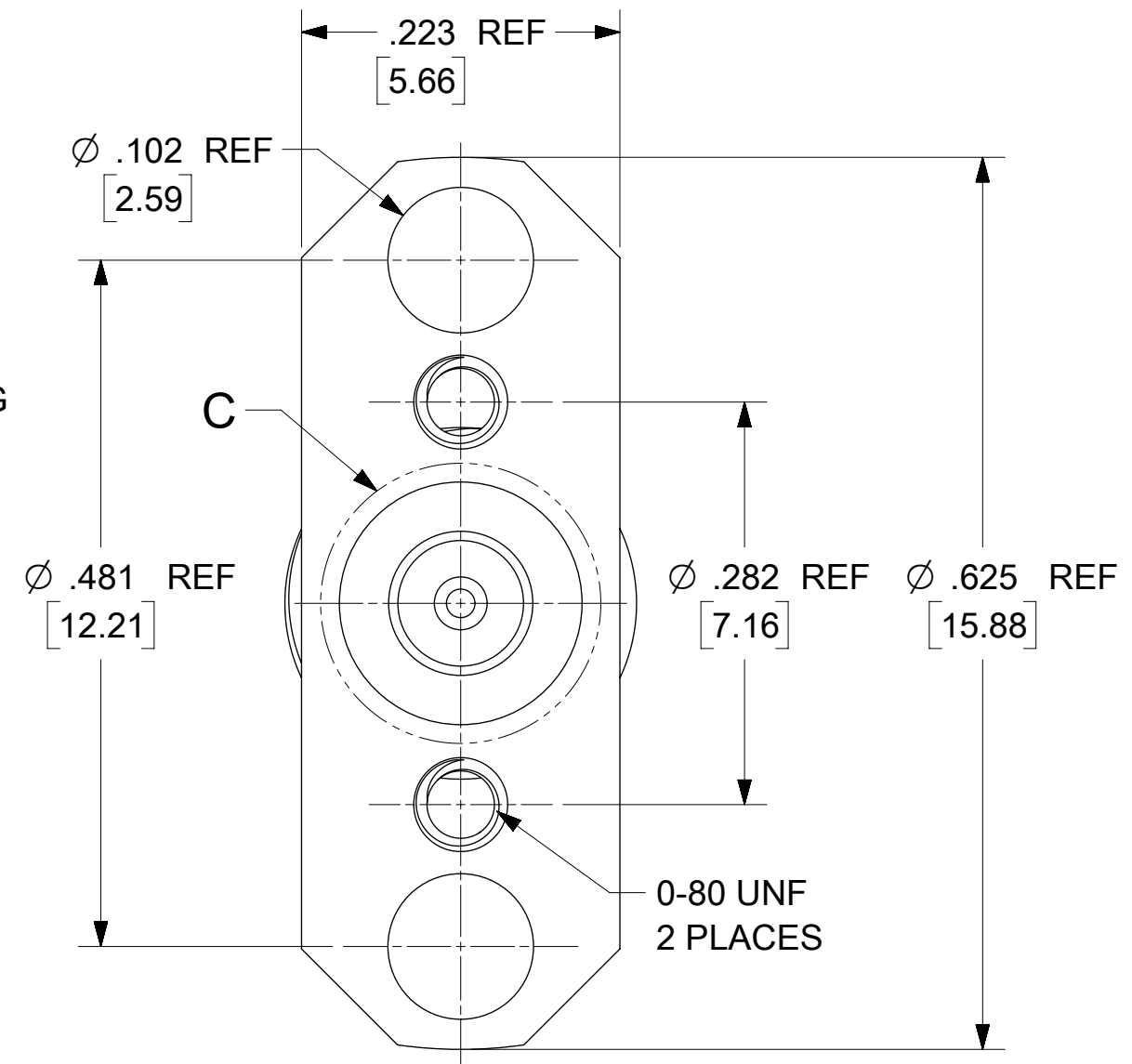
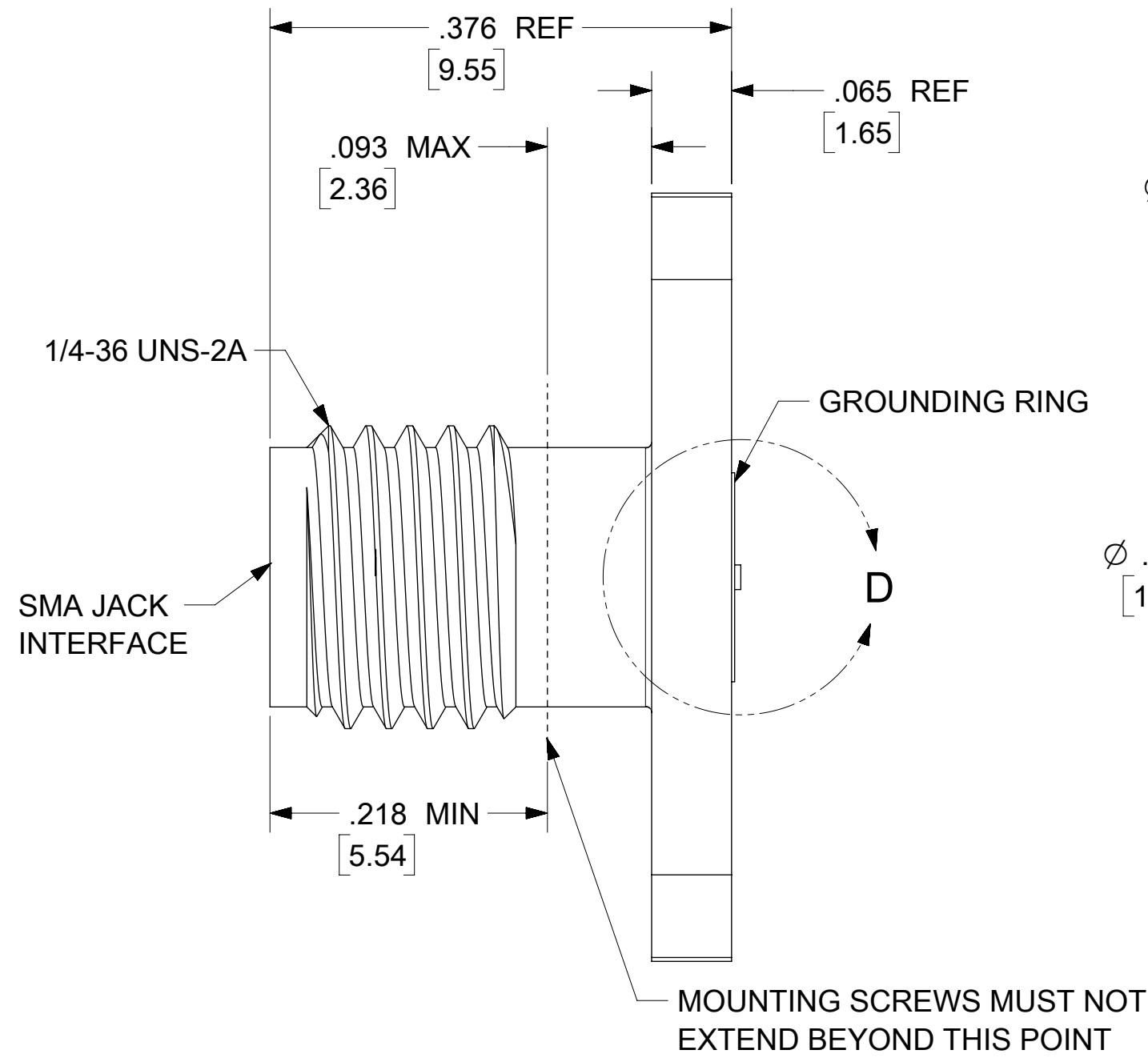
MATERIALS AND FINISHES:

**BODY: STAINLESS STEEL
PLATED: PASSIVATE**

**CENTER CONTACT: BERYLLIUM COPPER
PLATED: GOLD (50μ-in) MIN
OVER NICKEL (100μ -in) MIN**

INSULATOR: PTFE

**SCREW: STAINLESS STEEL
PLATED: PASSIVATE**



SEE SHEET 2 FOR PART NUMBERS

| | |
|-------------------------|--------------------|
| PS-89675-3460 | ELECTO/MECH PERFOR |
| MIL-STD-348B, FIG 310-2 | INTERFACE |
| SPECIFICATION | DESCRIPTION |

THIS DRAWING CONTAINS INFORMATION THAT IS PROPRIETARY TO MOLEX ELECTRONIC TECHNOLOGIES, LLC AND SHOULD NOT BE USED WITHOUT WRITTEN PERMISSION

| | | | | | |
|--|------------------------|----------------------------------|--------------------------|----------|-----------|
| DIMENSION UNITS INCH | SCALE | CURRENT REV DESC: SEE ECM 117632 | molex | | |
| GENERAL TOLERANCES (UNLESS SPECIFIED) | | EC NO: 174360 | | | |
| 4 PLACES ± | ± | DRWN: PSWAMI02 2018/04/04 | PRODUCT CUSTOMER DRAWING | | |
| 3 PLACES ± | ± | CHK'D: PSWAMI02 2018/04/04 | DOCUMENT NUMBER | | |
| 2 PLACES ± | ± | APPR: AROBERTSON 2018/04/04 | SD-73251-185 | | |
| 1 PLACE ± | ± | INITIAL REVISION: | DOC TYPE | DOC PART | REVISION |
| 0 PLACES ± | ± | DRWN: PSWAMI02 2017/06/01 | PSD | 000 | B21 |
| ANGULAR TOL ± ° | ± ° | APPR: AROBERTSON 2017/06/01 | SHEET NUMBER | | |
| DRAFT WHERE APPLICABLE MUST REMAIN WITHIN DIMENSIONS | THIRD ANGLE PROJECTION | DRAWING C-SIZE | MATERIAL NUMBER | CUSTOMER | SEE TABLE |
| | | SERIES 73251 | 1 OF 3 | | |

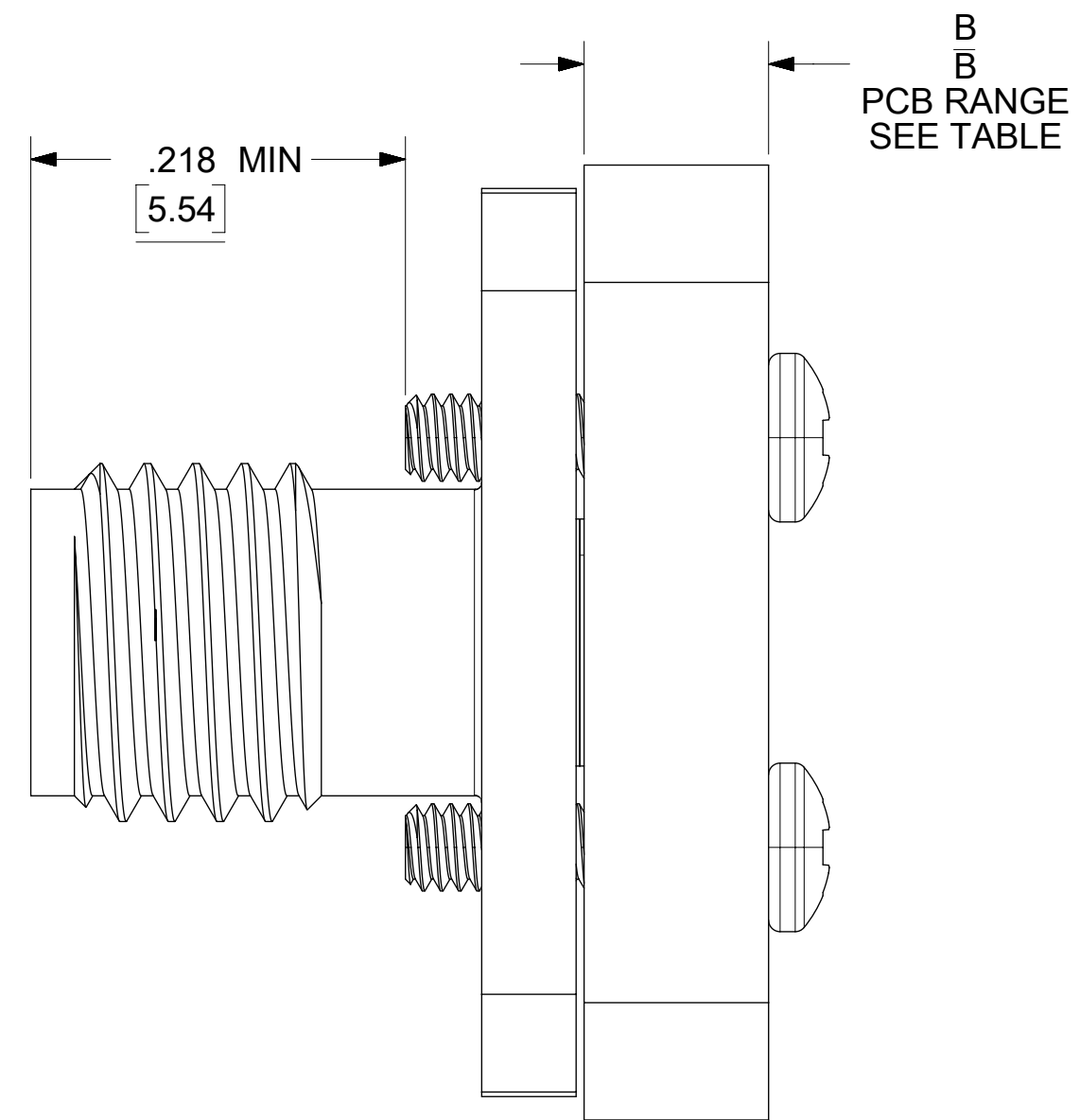
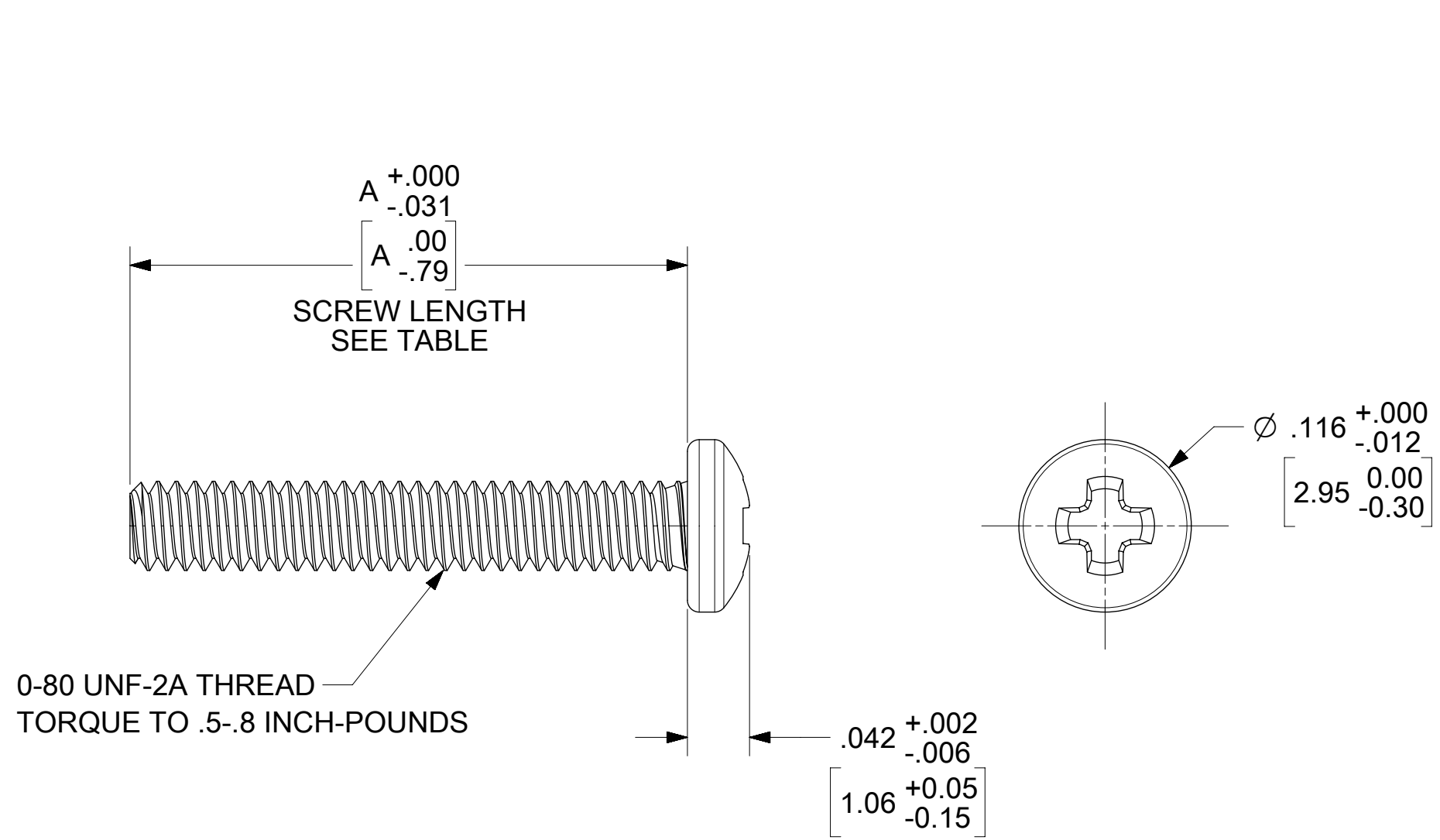
| | | | | |
|-----------------|----|--------------|------------|----------|
| DOCUMENT STATUS | P1 | RELEASE DATE | 2018/04/04 | 13:36:29 |
|-----------------|----|--------------|------------|----------|

MATERIALS AND FINISHES

SEE SHEET 1

PCB LAYOUT

SEE SHEET 1



| | | | | | | |
|------------|-------------|----------------|-----------------|--------------|------------|-----------------|
| 73251-1856 | 4.76 / .188 | .062+.040/-.01 | 1.57+1.02/-.25 | 2 | SINGLE BAG | IN BAG |
| 73251-1855 | 3.18/ .125 | .050+.00/-.040 | 1.27+0.00/-1.02 | 2 | TRAY | BULK |
| 73251-1854 | 9.53/ .375 | .255+.040/-.02 | 6.48+1.02/-.51 | 2 | TRAY | BULK |
| 73251-1853 | 6.35/ .250 | .130+.040/-.02 | 3.30+1.02/-.51 | 2 | TRAY | BULK |
| 73251-1852 | N/A | N/A | N/A | NO SCREW | SINGLE BAG | NONE |
| 73251-1851 | 4.76/ .188 | .062+.040/-.01 | 1.57+1.02/-.25 | 2 | TRAY | BULK |
| 73251-1850 | N/A | N/A | N/A | NO SCREW | TRAY | NONE |
| PART NO. | (MM/IN) | IN | MM | SCREWS (QTY) | PACKAGING | SCREW PACKAGING |
| | DIM A | DIM B | | | | |

THIS DRAWING CONTAINS INFORMATION THAT IS PROPRIETARY TO MOLEX ELECTRONIC TECHNOLOGIES, LLC AND SHOULD NOT BE USED WITHOUT WRITTEN PERMISSION

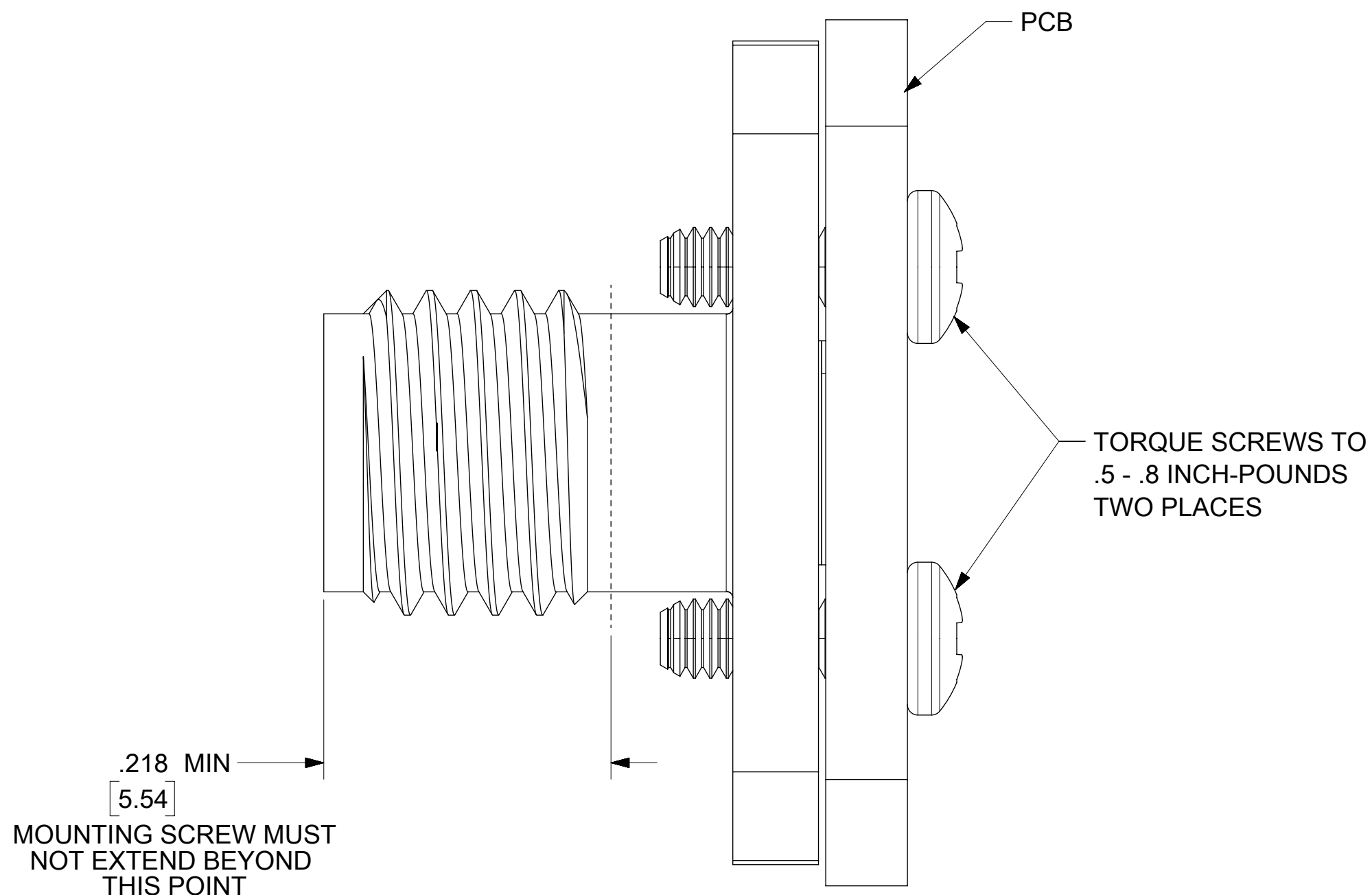
| | | | | | |
|--|------------------------|----------------------------------|--------------------------|----------|-----------|
| DIMENSION UNITS INCH | SCALE | CURRENT REV DESC: SEE ECM 117632 | molex | | |
| GENERAL TOLERANCES (UNLESS SPECIFIED) | | EC NO: 174360 | | | |
| 4 PLACES ± | ± | DRWN: PSWAMI02 2018/04/04 | PRODUCT CUSTOMER DRAWING | | |
| 3 PLACES ± | ± | CHK'D: PSWAMI02 2018/04/04 | DOCUMENT NUMBER | | |
| 2 PLACES ± | ± | APPR: AROBERTSON 2018/04/04 | SD-73251-185 | | |
| 1 PLACE ± | ± | INITIAL REVISION: | DOC TYPE | DOC PART | REVISION |
| 0 PLACES ± | ± | DRWN: PSWAMI02 2017/06/01 | PSD | 000 | B21 |
| ANGULAR TOL ± ° | ° | APPR: AROBERTSON 2017/06/01 | SHEET NUMBER | | |
| DRAFT WHERE APPLICABLE MUST REMAIN WITHIN DIMENSIONS | THIRD ANGLE PROJECTION | DRAWING | MATERIAL NUMBER | CUSTOMER | SEE TABLE |
| | | C-SIZE | 73251 | | 2 OF 3 |

| | | | | |
|-----------------|----|--------------|------------|----------|
| DOCUMENT STATUS | P1 | RELEASE DATE | 2018/04/04 | 13:36:29 |
|-----------------|----|--------------|------------|----------|

ADDITIONAL APPLICATION NOTES / ASSEMBLY INSTRUCTIONS

1. SEE SHEET ONE FOR SUGGESTED PCB LAYOUT. HEIGHT OF GROUND AND SIGNAL PADS MUST BE EVEN WITHIN $\pm .0015(.038)$.
2. SECURE CONNECTOR TO BOARD BY THREADING TWO 0-80 SCREWS FROM BOTTOM SIDE OF BOARD THROUGH CONNECTOR HOLES TO INDICATED TORQUE (SEE FIGURE).

DO NOT SOLDER CONNECTOR TO BOARD.



THIS DRAWING CONTAINS INFORMATION THAT IS PROPRIETARY TO MOLEX ELECTRONIC TECHNOLOGIES, LLC AND SHOULD NOT BE USED WITHOUT WRITTEN PERMISSION

| | | | | | | | | | |
|--|----|-------|--|----------------------------------|------------|-----------------|--------------|----------|--------------|
| DIMENSION UNITS INCH | | SCALE | | CURRENT REV DESC: SEE ECM 117632 | | | molex | | |
| GENERAL TOLERANCES (UNLESS SPECIFIED) | | | | EC NO: 174360 | | | | | |
| | MM | INCH | | DRWN: PSWAMI02 | 2018/04/04 | DOCUMENT NUMBER | | | |
| 4 PLACES | ± | ± | | CHK'D: PSWAMI02 | 2018/04/04 | SD-73251-185 | | | |
| 3 PLACES | ± | ± | | APPR: AROBERTSON | 2018/04/04 | DOC TYPE | DOC PART | REVISION | |
| 2 PLACES | ± | ± | | INITIAL REVISION: | | | PSD | 000 | B21 |
| 1 PLACE | ± | ± | | DRWN: PSWAMI02 | 2017/06/01 | MATERIAL NUMBER | | | |
| 0 PLACES | ± | ± | | APPR: AROBERTSON | 2017/06/01 | SEE TABLE | | | |
| ANGULAR TOL ± ° | | | | THIRD ANGLE PROJECTION | | DRAWING | SERIES | CUSTOMER | SHEET NUMBER |
| DRAFT WHERE APPLICABLE MUST REMAIN WITHIN DIMENSIONS | | | | C-SIZE | | 73251 | 1 | | 3 OF 3 |

| | | | | |
|-----------------|----|--------------|------------|----------|
| DOCUMENT STATUS | P1 | RELEASE DATE | 2018/04/04 | 13:36:29 |
|-----------------|----|--------------|------------|----------|