

1318332-1 ✓ ACTIVE

## TH/.025 Connector System

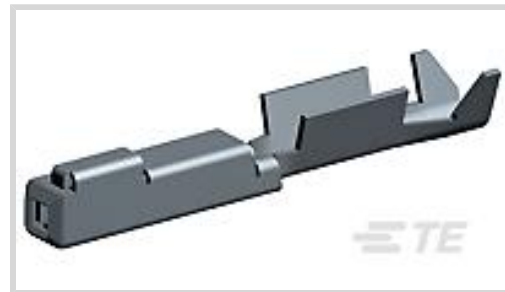
TE Internal #: 1318332-1

Automotive Terminals, Receptacle, Mating Tab Width .64 mm [.025 in], Tab Thickness .64 mm [.025 in], 18 – 16 AWG Wire Size, TH/.025 Connector System

[View on TE.com >](#)



Terminals & Splices > Automotive Terminals > TH/.025 CONNECTOR SYSTEM, RECPT AND TAB



Terminal Type: **Receptacle**

Mating Tab Width: **.64 mm [.025 in]**

Mating Tab Thickness: **.64 mm [.025 in]**

Terminal Transmits: **0 – 24 A (Low Power)**

Wire Size: **18 – 16 AWG**

[All TH/.025 CONNECTOR SYSTEM, RECPT AND TAB \(26\)](#)

## Features

### Product Type Features

Receptacle Style	180°
Sealable	No
Primary Locking Feature	Clean Body

### Contact Features

Contact Size	1mm
Contact Fabrication	Stamped & Formed
Wire Contact Termination Area Plating Material	Tin
Typical Current Rating	6 A
Crimp Type	F-Crimp
Terminal Type	Receptacle
Mating Tab Width	.64 mm [.025 in]
Mating Tab Thickness	.64 mm [.025 in]
Interface Plating	Tin (Sn)

### Termination Features

Termination Method to Wire & Cable	Crimp
Product Terminates To	Wire

## Dimensions



Compatible Insulation Diameter Range	1.6 – 2.1 mm [.063 in]
Wire Size	.75 – 1.25 mm <sup>2</sup>
Wire Size Search	16 AWG, 17 AWG, 18 AWG

### Usage Conditions

Insulation Option	Uninsulated
Operating Temperature (Max)	80 °C, 85 °C, 90 °C, 100 °C, 105 °C, 110 °C, 120 °C [176 °F][185 °F][194 °F][212 °F][221 °F][230 °F][248 °F]
Operating Temperature Range	-40 – 120 °C [-40 – 248 °F]

### Operation/Application

Compatible With Wire Base Material	Copper
------------------------------------	--------

### Packaging Features

Packaging Quantity	7000
Packaging Method	Reel

### Other

Terminal Transmits	0 – 24 A (Low Power)
--------------------	----------------------

## Product Compliance

[For compliance documentation, visit the product page on TE.com>](#)

EU RoHS Directive 2011/65/EU	Compliant
EU ELV Directive 2000/53/EC	Compliant
China RoHS 2 Directive MIIT Order No 32, 2016	No Restricted Materials Above Threshold
EU REACH Regulation (EC) No. 1907/2006	Current ECHA Candidate List: JUNE 2023 (235) Candidate List Declared Against: JAN 2023 (233) Does not contain REACH SVHC
Halogen Content	Low Halogen - Br, Cl, F, I < 900 ppm per homogenous material. Also BFR/CFR/PVC Free
Solder Process Capability	Not applicable for solder process capability

#### Product Compliance Disclaimer

This information is provided based on reasonable inquiry of our suppliers and represents our current actual knowledge based on the information they provided. This information is subject to change. The part numbers that TE has identified as EU RoHS compliant have a maximum concentration of 0.1% by weight in homogenous materials for lead, hexavalent chromium, mercury, PBB, PBDE, DBP, BBP, DEHP, DIBP, and 0.01% for cadmium, or qualify for an exemption to these limits as defined in the Annexes of Directive 2011/65/EU (RoHS2). Finished electrical and electronic equipment products

will be CE marked as required by Directive 2011/65/EU. Components may not be CE marked. Additionally, the part numbers that TE has identified as EU ELV compliant have a maximum concentration of 0.1% by weight in homogenous materials for lead, hexavalent chromium, and mercury, and 0.01% for cadmium, or qualify for an exemption to these limits as defined in the Annexes of Directive 2000/53/EC (ELV). Regarding the REACH Regulation, the information TE provides on SVHC in articles for this part number is based on the latest European Chemicals Agency (ECHA) 'Guidance on requirements for substances in articles' posted at this URL: <https://echa.europa.eu/guidance-documents/guidance-on-reach>

## Compatible Parts



TE Part # CAT-T319-CH8172  
TH/.025 CONNECTOR SYSTEM,  
HOUSING



TE Part # CAT-M9194-CH8172  
MULTILOCK, CONNECTOR HOUSING



TE Part # 2-2836430-1  
OCEAN\_2.0\_APPLICATOR-S-  
070F086O



TE Part # 2-2836430-2  
OCEAN\_2.0\_APPLICATOR-S-  
070F086O



TE Part # 2836430-1  
OCEAN\_2.0\_APPLICATOR-S-  
070F086O



TE Part # 2836430-2  
OCEAN\_2.0\_APPLICATOR-S-  
070F086O




KIT  
REPRESENTATION ONLY

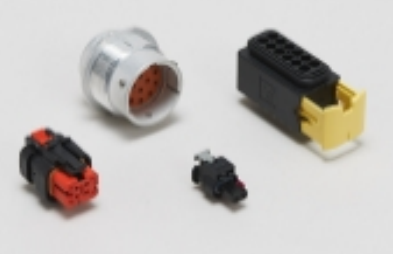
TE Part # 7-2836430-7  
OCEAN\_2.0\_SPARE\_PART\_KIT-  
070F086O

TE Part # 1747331-1  
HEADER ASSEMBLY


## Also in the Series | TH/.025 Connector System



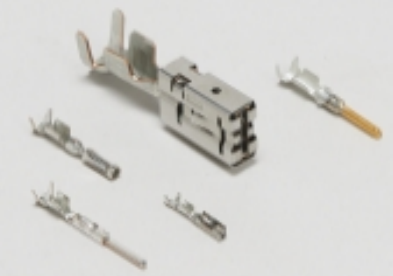
Automotive Connector Caps & Covers  
(6)




Automotive Housings(223)




Automotive Seals & Cavity Plugs(2)



Automotive Terminals(25)



Insertion & Extraction Tools(4)



Other Automotive Connector  
Accessories(5)

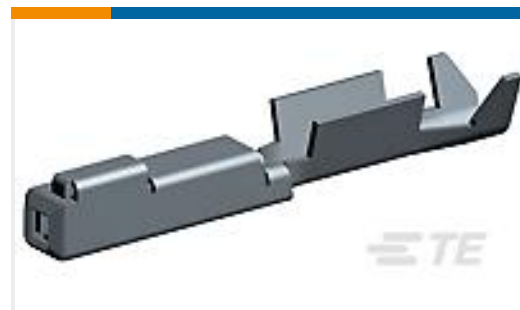


PCB Headers & Receptacles(163)

## Customers Also Bought



TE Part #105035-000  
WWP-125-1/4-0-1.5IN



TE Part #1318329-1  
.025 SEALED REC CONT



TE Part #986679-000  
2019D0301-0



TE Part #2292906-1  
2POS,MCON 1.2,REC HSG ASSY,SLD,  
COD A



TE Part #2292906-2  
2POS,MCON 1.2,REC HSG ASSY,SLD,  
COD B



TE Part #2292937-1  
2POS,1.2X0.6,TAB HSG ASSY,SLD,  
COD A



TE Part #2292937-2  
2POS,1.2X0.6,TAB HSG ASSY,SLD,  
COD B



TE Part #7G7920-6  
DEUTSCH Sealing Plugs

## Documents

### Product Drawings

#### [.040 SEALED REC CONT](#)

English

### CAD Files

#### Customer View Model

[ENG\\_CVM\\_CVM\\_1318332-1\\_G.2d\\_dxf.zip](#)

English

#### 3D PDF

3D

#### Customer View Model

[ENG\\_CVM\\_CVM\\_1318332-1\\_G.3d\\_igs.zip](#)

English

#### Customer View Model

[ENG\\_CVM\\_CVM\\_1318332-1\\_G.3d\\_stp.zip](#)

English

By downloading the CAD file I accept and agree to the [Terms and Conditions](#) of use.

### Datasheets & Catalog Pages

#### [TH/.025 Connector Series](#)

English

### Product Specifications

#### [Crimping CLEAN BODY 025/040 Receptacle Contact](#)

English

#### [Application Specification](#)

English



### Application Specification

Japanese

### Crimping CLEAN BODY 025/040 Receptacle Contact

Japanese

---

### Instruction Sheets

#### Instruction Sheet (non U.S.)

Japanese

#### The Extraction Tool for 025/040 Clean Body Connector

Japanese

#### Instruction Sheet (non U.S.)

Japanese