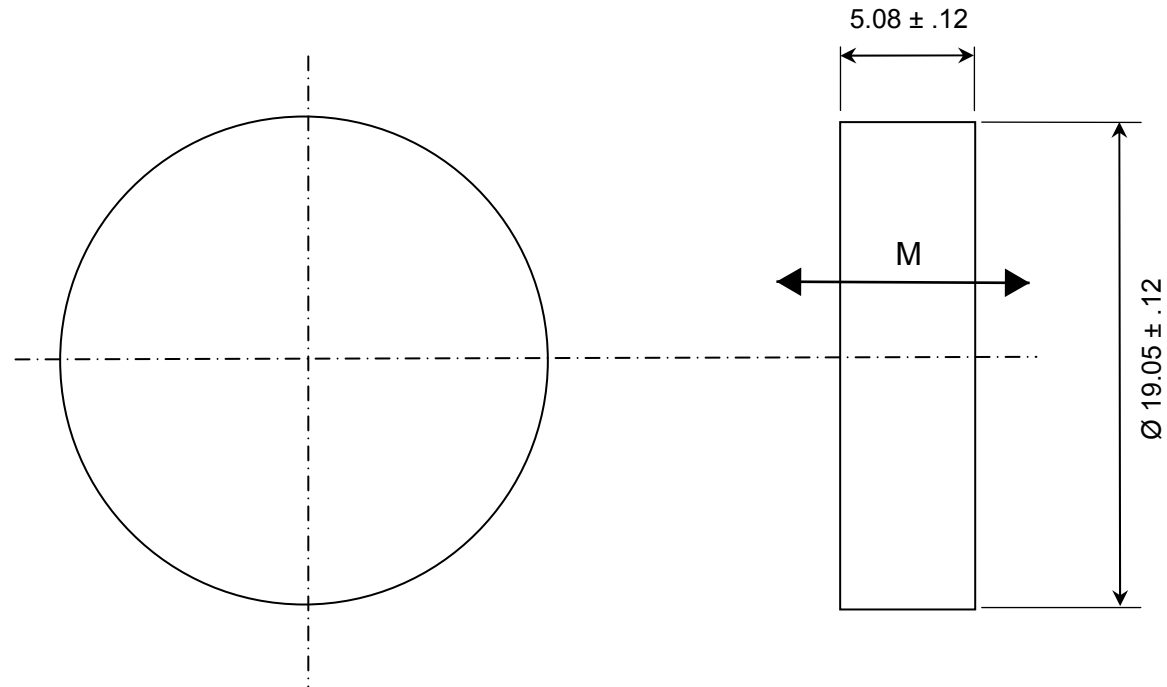


CONFIDENTIAL & PROPRIETARY INFORMATION

This document contains Confidential and Proprietary Information of Alliance LLC, and all design, manufacturing, reproduction, use, and sale rights of such information are expressly reserved

ALL DIMENSIONS ARE IN MM

**NOTES:**

1. MAGNET PROPERTIES PER S22:

Br: 9,500-10,000 G
 Hc: 9,000-9,500 Oe
 Hci: ≥15,000 Oe
 T max: 250 C

2. SUPPLIED MAGNETIZED ACROSS THE THICKNESS



REV	DESCRIPTION	DATE	BY
B	Changed CAD, incl cert, 3D	2/11/20	BT

TOLERANCES
 (UNLESS OTHERWISE NOTED)

DECIMAL METRIC
 X.XX = ± .01 X.X = ± .25
 X.XXX = ± .005 X.XX = ± .13

ANGLES

± .5°

DO NOT SCALE DRAWING

Alliance LLC		
1450 CLARK DRIVE, VALPARAISO, INDIANA 46385		
DESCRIPTION: 19.05 mm x 15.08 mm DISC MAGNET		
Samarium Cobalt Magnet		P/N: YB-114-1
GRADE: S22	Drwg by: BT	REV LEVEL: B
COATING: None	Appr by: DV	Appr. Dated: 08-18-2019