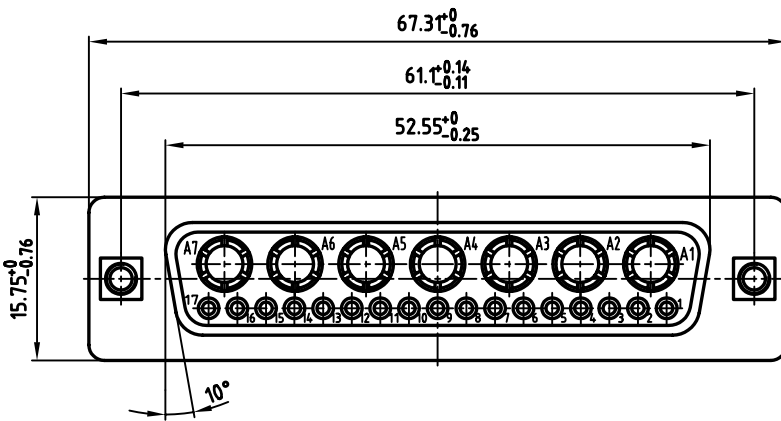
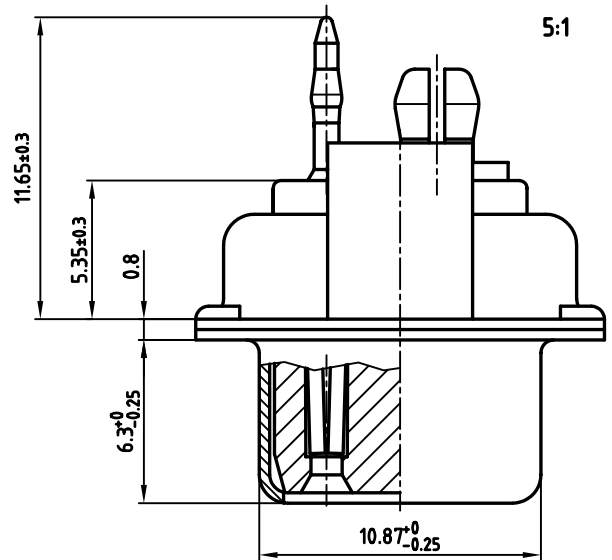


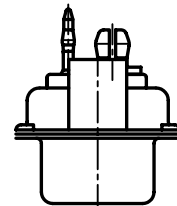
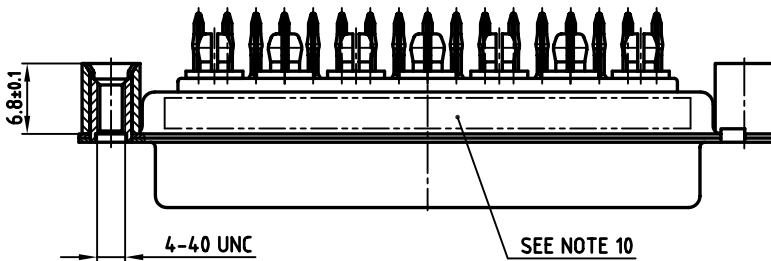
used for: D-SUB COMBINATION

NOTES:

1. METALSHELLS: STEEL; min. 315µin TIN OVER 40-80µin NICKEL
2. INSULATORS: PBT GF UL 94 V-0, GREEN
3. PRESS-FIT SIGNAL CONTACTS: COPPER ALLOY
PLATING-MATING AREA+REAR SIDE:
8µin HARD GOLD OVER min. 50µin NICKEL
4. HIGH POWER PRESS-FIT CONTACTS 40A: COPPER ALLOY
PLATING-MATING AREA: 8µin HARD GOLD OVER min. 50µin NICKEL
PLATING: PRESS-FIT AREA: TIN PLATED
5. P.C.B. THICKNESS: min. 2.2mm
6. THREADED REAR SPACER: COPPER ALLOY; min. 200µin TIN OVER 80µin NICKEL
7. SLEEVE: COPPER ALLOY; min. 200µin TIN OVER 80µin NICKEL
8. P.C.B. HOLE DRILLINGS ON SHEET 2
9. MAXIMUM TORQUE VALUE FOR THREAD: 6 in.LB
10. CONNECTOR IS PART MARKED: 3024W7SAP98A48A CONEC ABC



CONNECTOR SHOULD BE FIXED WITH SCREWS TO THE P.C.B.

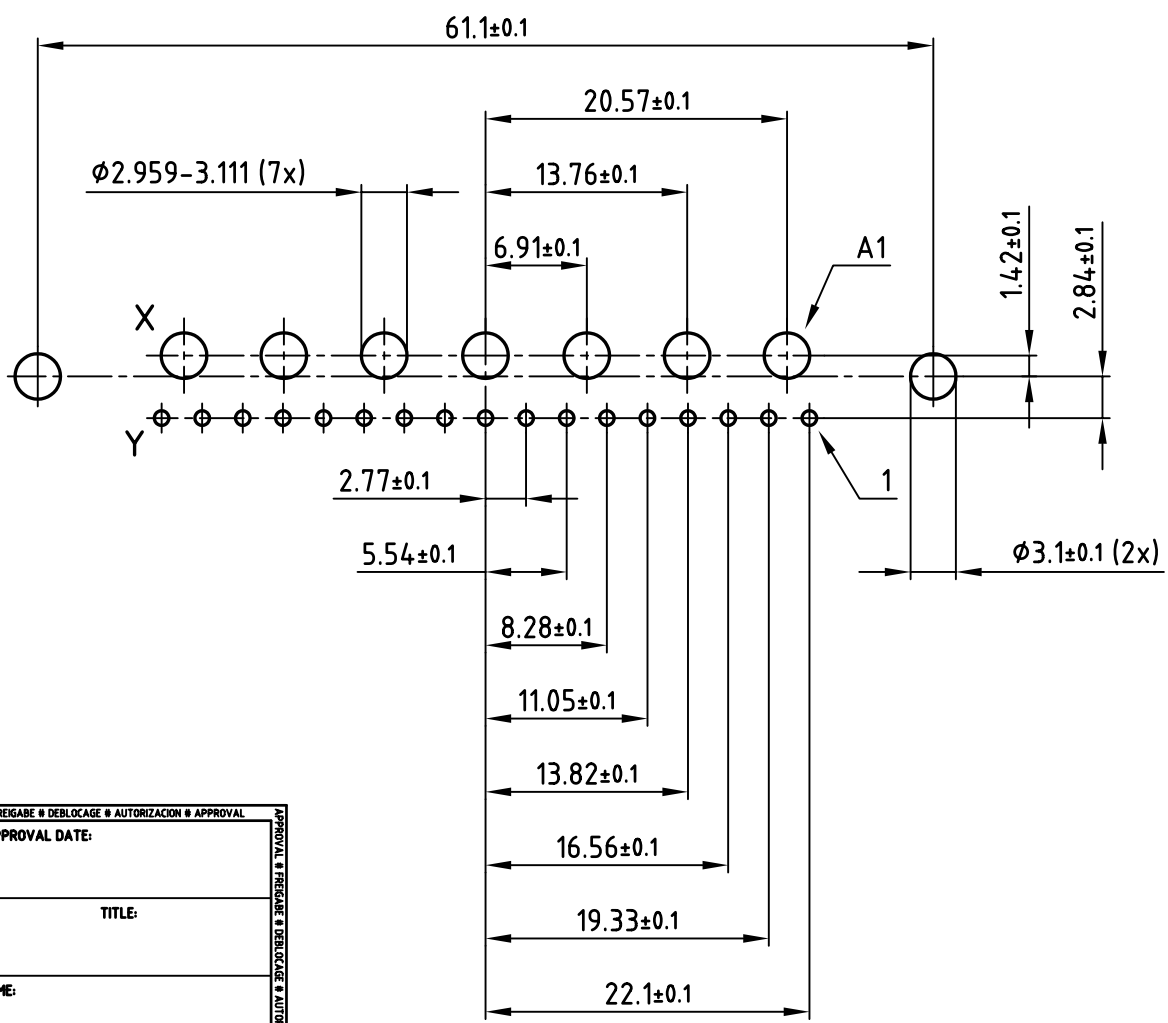
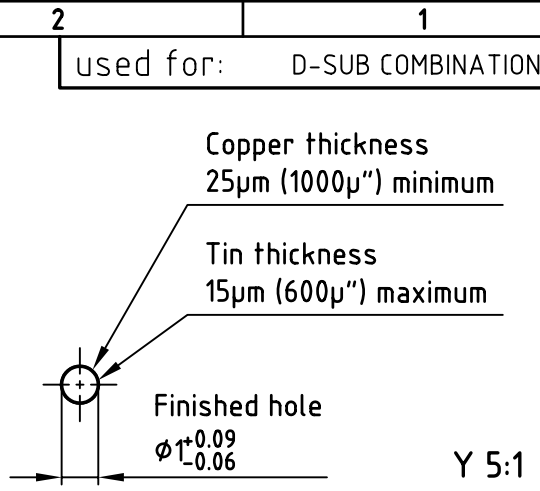
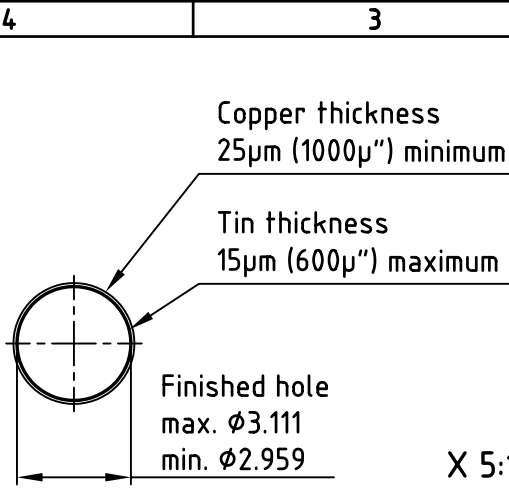


APPROVAL * FREIGABE * DEBLOCAGE * AUTORIZACION * APPROVAL	
CUSTOMER APPROVAL DATE:	
NAME:	TITLE:
COMPANY NAME:	
APPROVAL * FREIGABE * DEBLOCAGE * AUTORIZACION * APPROVAL	

THIS DRAWING MAY NOT BE COPIED OR REPRODUCED IN ANY WAY, AND MAY NOT BE PASSED ON TO A THIRD PARTY, WITHOUT WRITTEN PERMISSION. OWNERSHIP AND COPYRIGHT OF CONEC Gmbh DO NOT ALTER CAD DRAWING BY HAND

tolerance		scale:	2:1 (5:1)
	dim. in mm	material:	SEE NOTES
2007	date	name	title:
drawn	26.02.	Lehmenkühtler	D-SUB COMBINATION FEMALE
appd.	26.02.	Koch	24W7S PRESSFIT TYPE
norm			with threaded rear spacer
d-old			dwg no: AutoCAD 2006
a	Origin	CONEC	13K1A1982
rev.	description	date	name
			part no: 3024W7SAP98A48A

dwg no:	AutoCAD 2006	DIN-A
	13K1A1982	3
		sh:1/2



APPROVAL # FREIGABE # DEBLOCAGE # AUTORIZACION # APPROVAL

CUSTOMER APPROVAL DATE:

NAME: TITLE:

COMPANY NAME:

APPROVAL # FREIGABE # DEBLOCAGE # AUTORIZACION # APPROVAL

THIS DRAWING MAY NOT BE COPIED OR REPRODUCED IN ANY WAY, AND MAY NOT BE PASSED ON TO A THIRD PARTY WITHOUT WRITTEN PERMISSION.

OWNERSHIP AND COPYRIGHT OF CONEC GmbH

DO NOT ALTER CAD DRAWING BY HAND

tolerance				scale: 2:1 (5:1)	
		dim. in mm		material: SEE SHEET 1	
2007	date	name		P.C.B. HOLE DRILLINGS D-SUB COMBINATION FEMALE 24W7S PRESSFIT with threaded rear spacer	
drawn	26.02.	Lehmenkühler			
appd.	26.02.	Koch			
norm					
d-old					
a	Origin			dwg no: AutoCAD 2006	DIN-A
rev.	description	date	name	13K1A1982	4
				part no: SEE SHEET 1	sh:2/2

